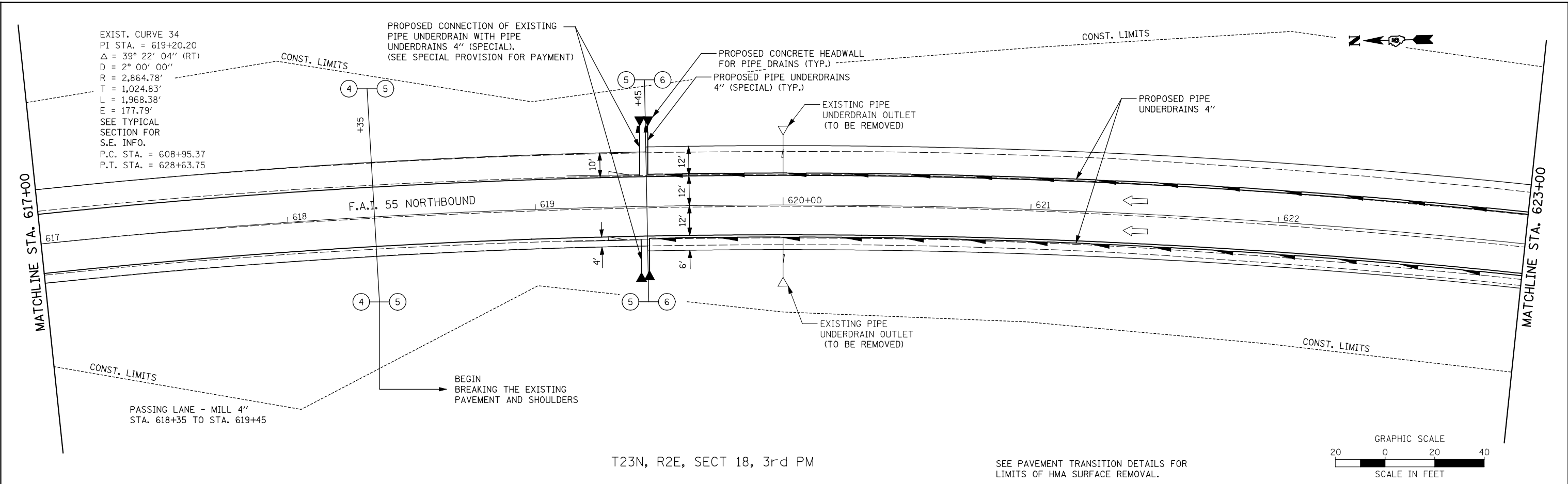


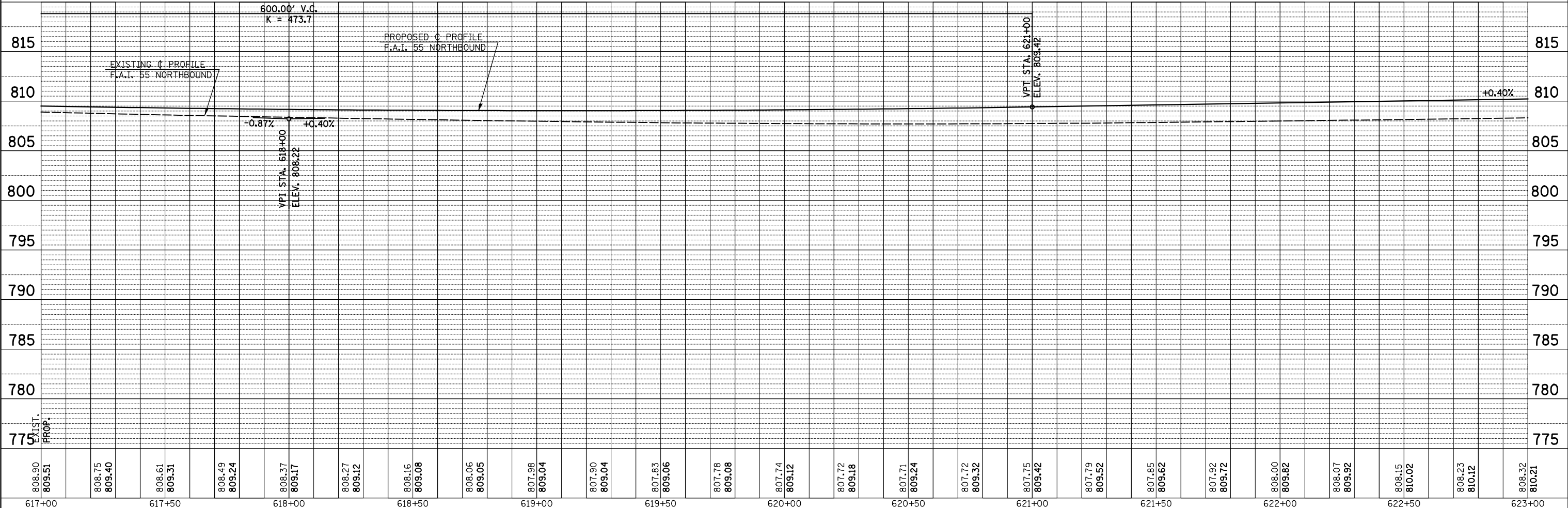
PLAN	SURVEYED	DATE
	PLOTTED	BY
	CHECKED	
	NOTED	
	FILED	
	NO.	

PROFILE	SURVEYED	DATE
	PLOTTED	BY
	CHECKED	
	NOTED	
	FILED	
	NO.	



T23N, R2E, SECT 18, 3rd PM

SEE PAVEMENT TRANSITION DETAILS FOR LIMITS OF HMA SURFACE REMOVAL.



FILE NAME =	USER NAME = SJS	DESIGNED -	REVISED -
... \D570520-sh1-p1nprf.dgn		DRAWN -	REVISED -
		CHECKED -	REVISED -
		DATE -	REVISED -

**STATE OF ILLINOIS
DEPARTMENT OF TRANSPORTATION**

PLAN & PROFILE F.A.I. 55 NORTHBOUND

SCALE: 1" = 20' SHEET NO. OF SHEETS STA. 617+00 TO STA. 623+00

F.A.I. RTE.	SECTION	COUNTY	TOTAL SHEETS	SHEET NO.
55	(57-7HB-2 & 57-7HB-1)BR	MCLEAN	153	22
CONTRACT NO. 70520				
FED. ROAD DIST. NO. ILLINOIS FED. AID PROJECT				