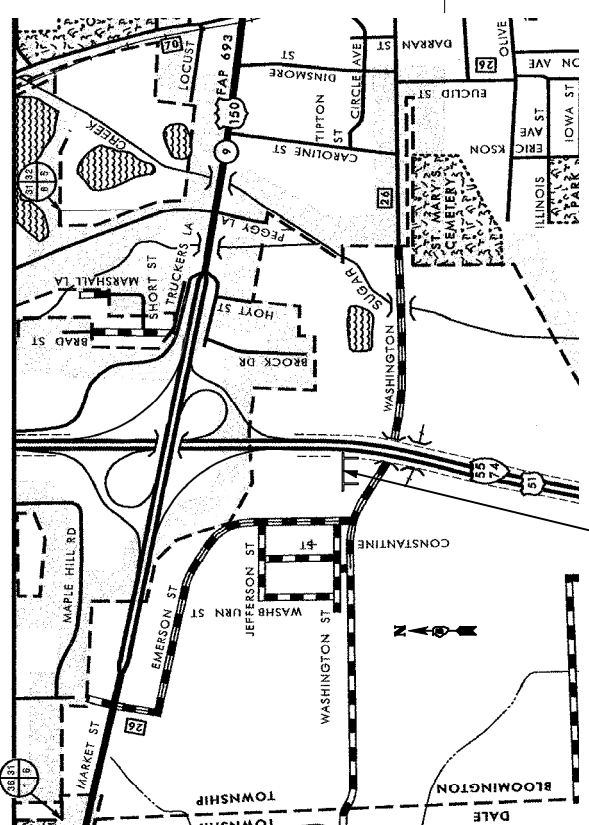
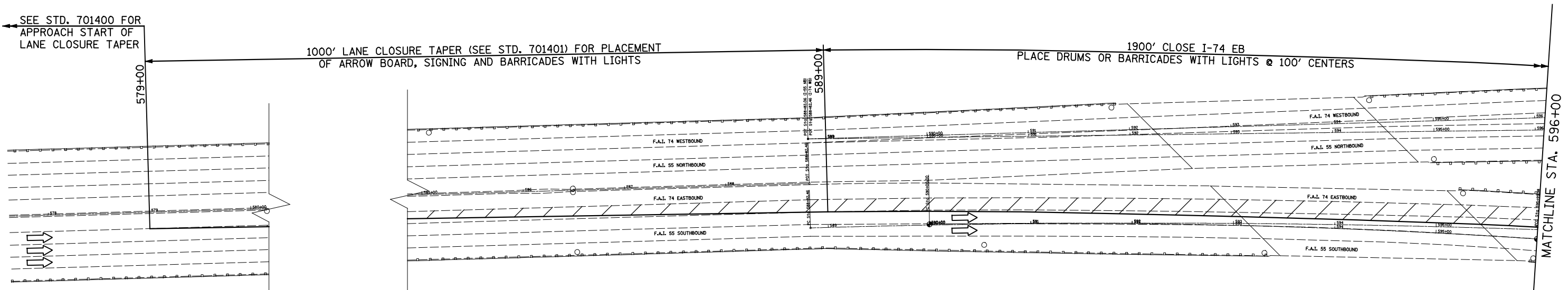
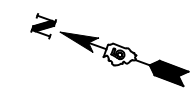
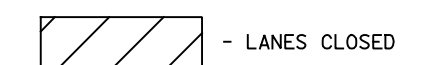


NOTES

1. CHANGEABLE MESSAGE SIGNS SHALL BE PROVIDED AND IN PLACE 7 DAYS PRIOR TO THE ROAD CLOSURE. THEY SHALL BE PLACED AT A LOCATION ON I-74 EB AND I-55 BUSINESS SB AS DIRECTED BY THE ENGINEER.



CMS EAST I-74 CLOSED / 3 MILES AHEAD / DETOUR VIA I-55 SOUTH



FILE NAME =	USER NAME = SJS	DESIGNED -	REVISED -
... \D570520-sht-staging_2.dgn		DRAWN -	REVISED -
	PLOT SCALE = 100.0000' / IN.	CHECKED -	REVISED -
	PLOT DATE = 08/09/2010 10:56:12	DATE -	REVISED -

**STATE OF ILLINOIS
DEPARTMENT OF TRANSPORTATION**

**TRAFFIC CONTROL AND PROTECTION FOR TEMPORARY DETOUR
I-74 EB**

F.A.I. RTE.	SECTION	COUNTY	TOTAL SHEETS	SHEET NO.
55	(57-7HB-2 & 57-7HB-1)BR	MCLEAN	153	45
CONTRACT NO. 70520				

SCALE: SHEET NO. OF SHEETS STA. TO STA.

ILLINOIS FED. AID PROJECT