

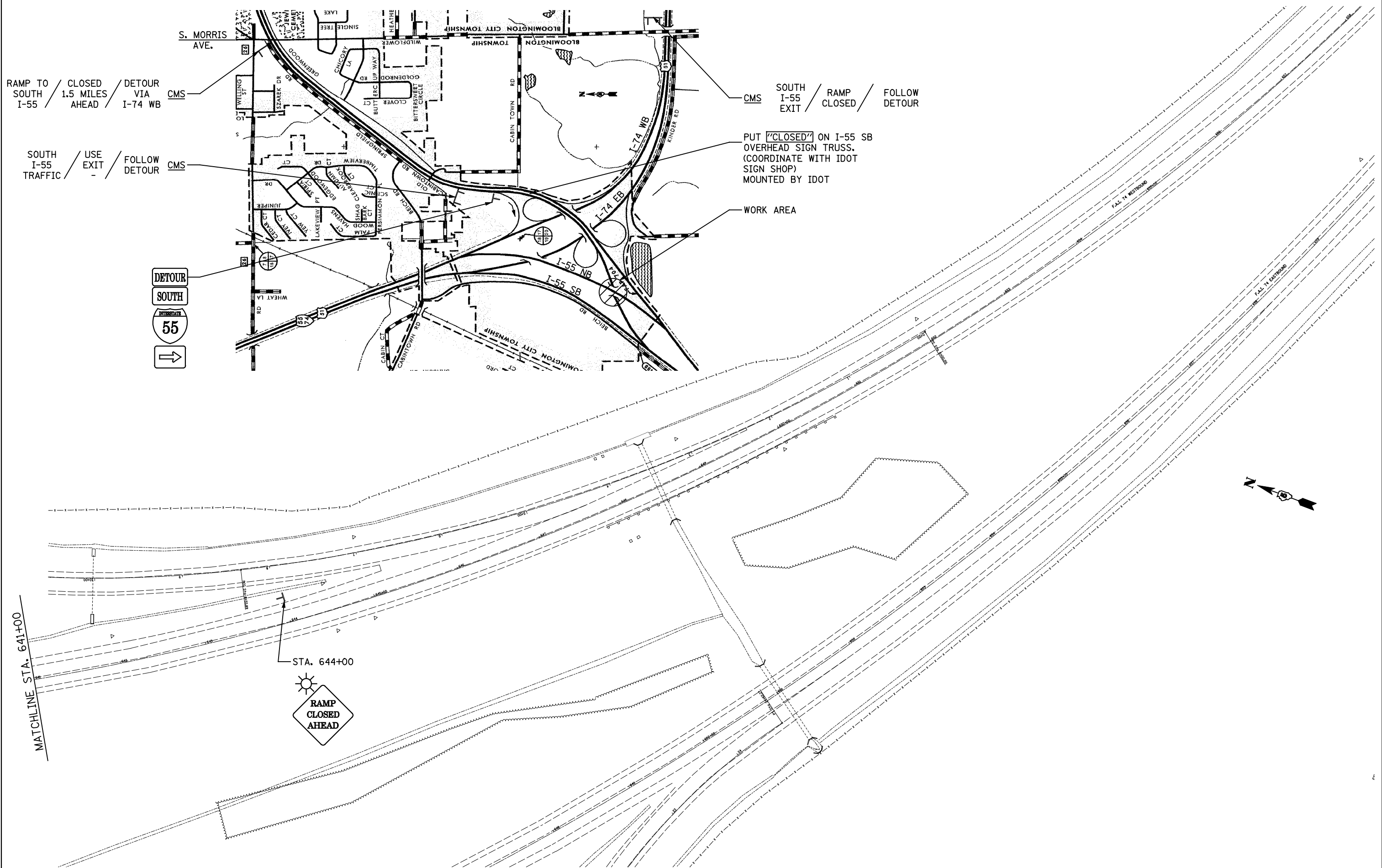
RAMP TO SOUTH I-55 / CLOSED 1.5 MILES AHEAD / DETOUR VIA I-74 WB

SOUTH I-55 TRAFFIC / USE EXIT - / FOLLOW DETOUR

SOUTH I-55 EXIT / RAMP CLOSED / FOLLOW DETOUR

PUT "CLOSED" ON I-55 SB OVERHEAD SIGN TRUSS. (COORDINATE WITH IDOT SIGN SHOP) MOUNTED BY IDOT

WORK AREA



FILE NAME = ... \0570520-sht-staging_2.dgn
JD Johnson, Depp & Quisenberry
 CONSULTING ENGINEERS
 Springfield, Illinois

USER NAME = SJS	DESIGNED -	REVISED -
PLOT SCALE = 100.0000' / IN.	DRAWN -	REVISED -
PLOT DATE = 08/09/2010 10:56:16	CHECKED -	REVISED -
	DATE -	REVISED -

**STATE OF ILLINOIS
 DEPARTMENT OF TRANSPORTATION**

**TRAFFIC CONTROL AND PROTECTION FOR TEMPORARY DETOUR
 I-55 BUSN. SB**

F.A.I. RTE.	SECTION	COUNTY	TOTAL SHEETS	SHEET NO.
55	(57-7HB-2 & 57-7HB-1)BR	MCLEAN	153	49
CONTRACT NO. 70520				
ILLINOIS FED. AID PROJECT				

SCALE: SHEET NO. OF SHEETS STA. TO STA.