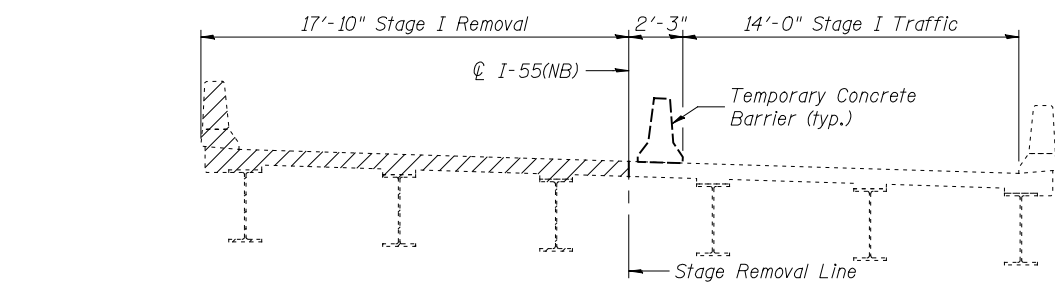
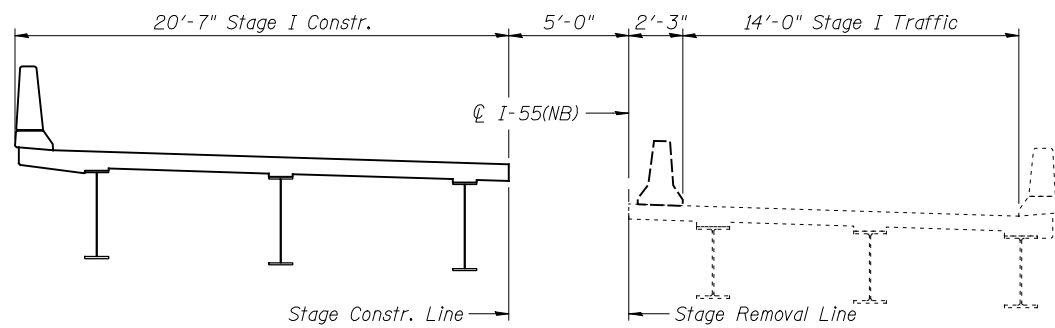


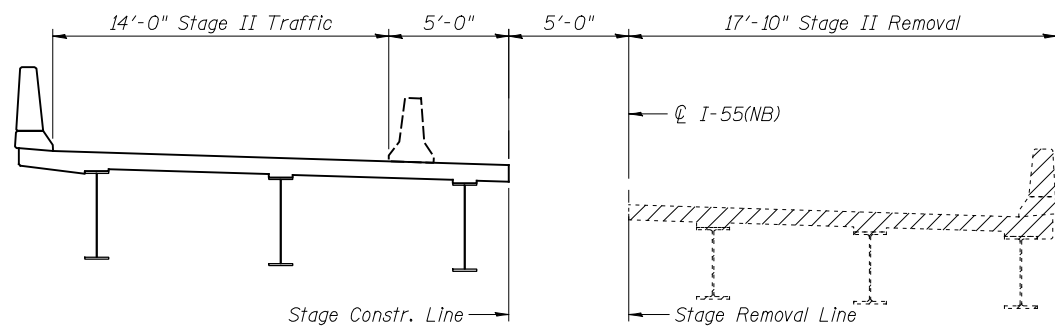
STATE OF ILLINOIS  
DEPARTMENT OF TRANSPORTATION



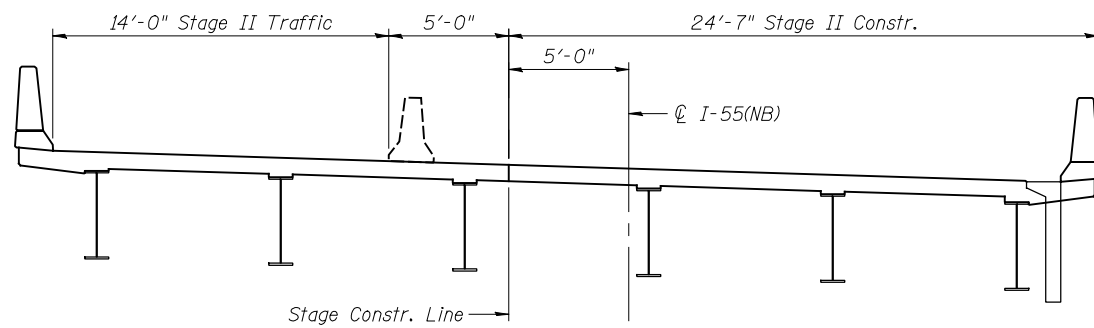
**STAGE I REMOVAL**  
(Looking South)



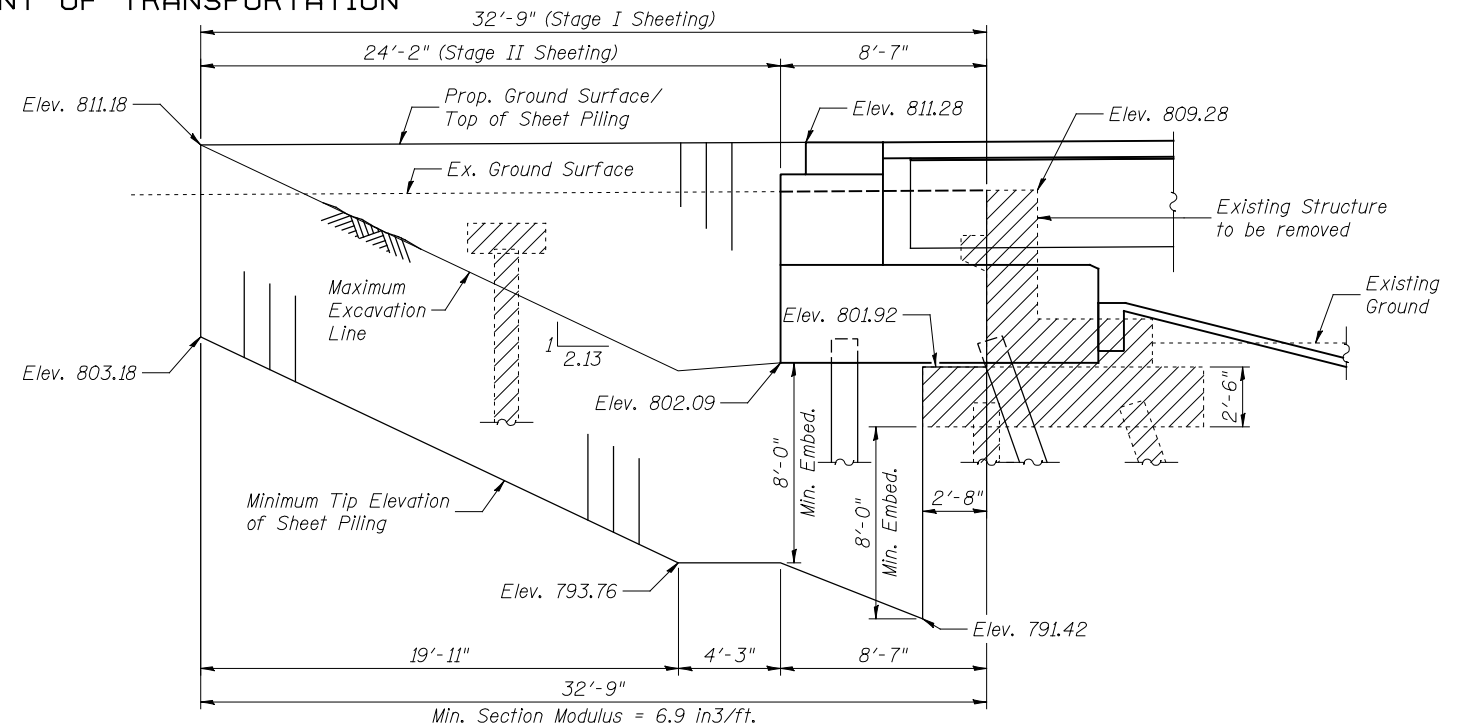
**STAGE I CONSTRUCTION**  
(Looking South)



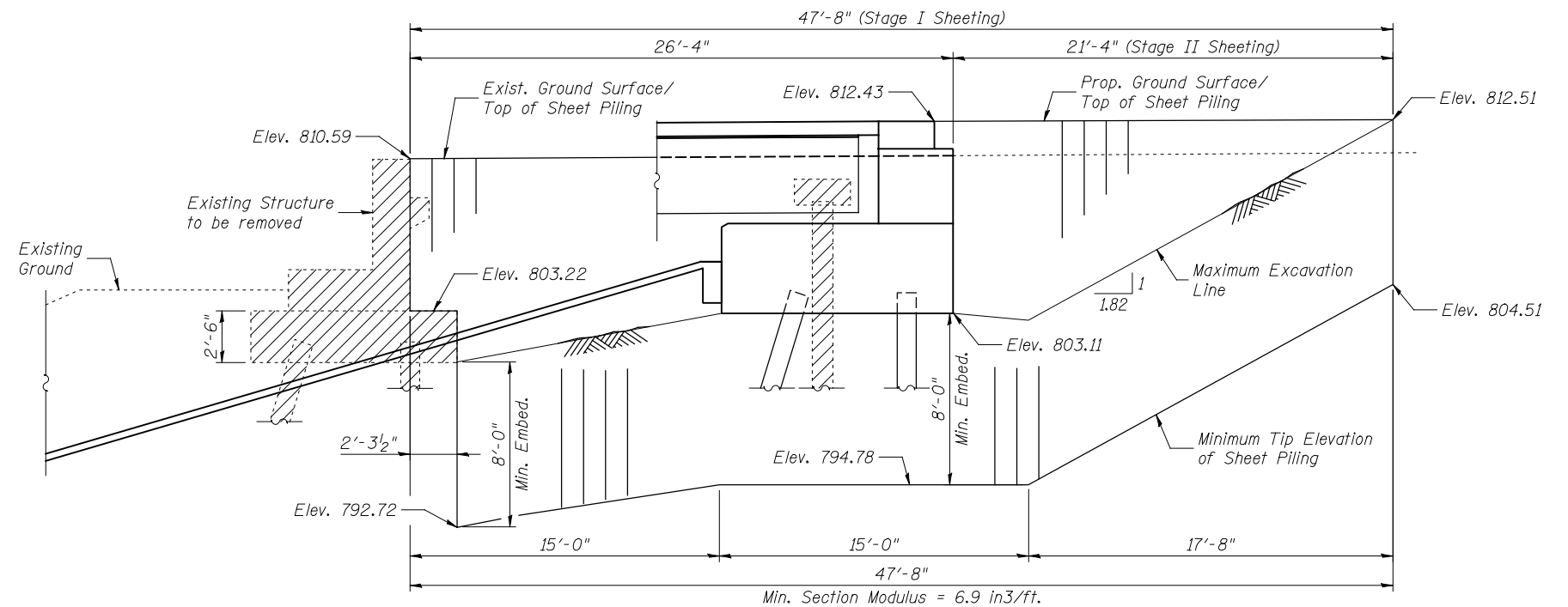
**STAGE II REMOVAL**  
(Looking South)



**STAGE II CONSTRUCTION**  
(Looking South)



**NORTH ABUTMENT**



**SOUTH ABUTMENT**

**TEMPORARY SHEET PILING DETAILS**

(Slopes and horizontal dimensions are measured parallel to  $\phi$  roadway)

If the Contractor chooses to alter the temporary cantilevered sheet piling design requirements shown on plans, a design submittal including plan details and calculations will be required for review and acceptance by the Engineer.

The Contractor shall connect the first sheet to the existing abutment wall to ensure stability of sheets driven to the top of the existing footing. This connection shall be reviewed and accepted by the Engineer and included in the cost for Temporary Sheet Piling.

**STAGE CONSTRUCTION DETAILS**  
**STRUCTURE NO. 057-0250**

Notes:  
Hatched area indicates Removal of Existing Structures.  
For quantity and location of Temporary Concrete Barrier, see Roadway Plans.

DESIGNED: CMV	DRAWN: SJS
CHECKED: DCD	CHECKED: CMV/DCD

SHEET 3 OF 27	F.A.I. RTE.	SECTION	COUNTY	TOTAL SHEETS	SHEET NO.
	55	(57-7HB-1)BR	MCLEAN	153	53
	STA. 626+53.70		CONTRACT NO. 70520		
FED. ROAD DIST. NO.		ILLINOIS FED. AID PROJECT			

FILE: J:\JDO\10169 IL-D5 I-55NB McLean\14EB\0570250-70520-003-stageconst.r.dgn  
 USER: DCD  
 PRINT DATE: 08/06/2010 20:55:58 SAVE DATE: 8/5/2010