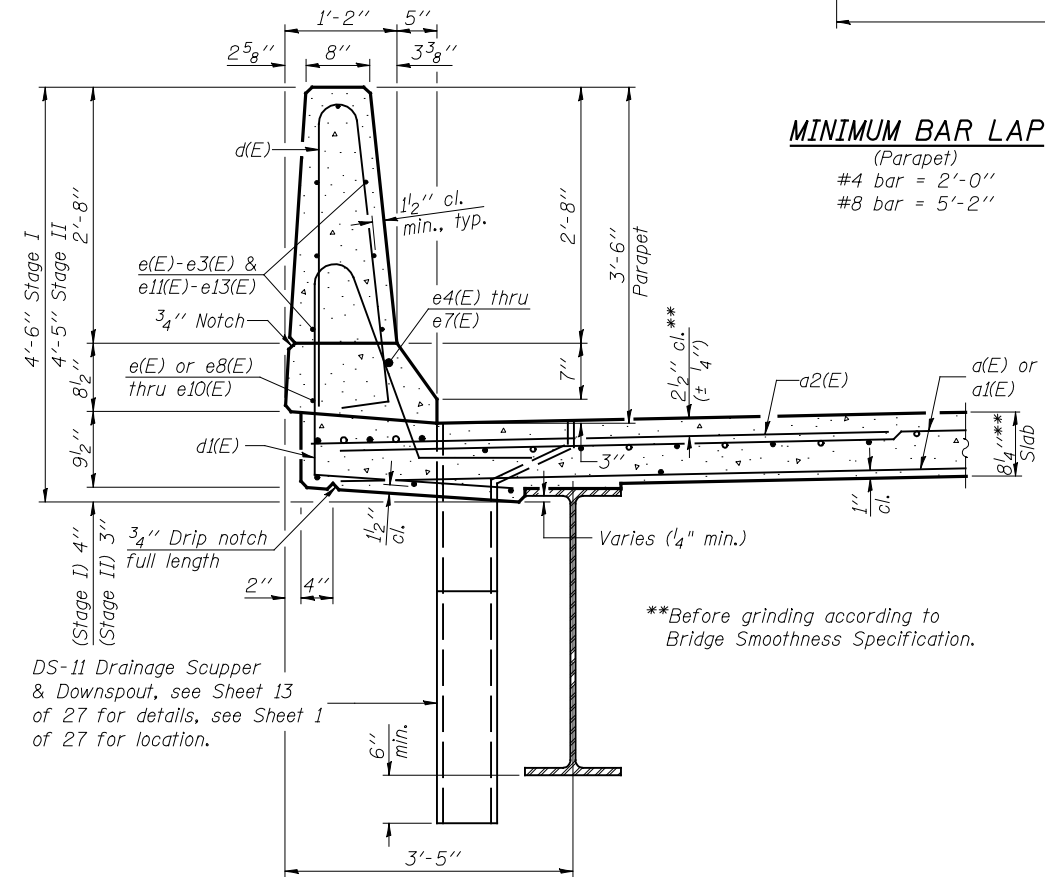
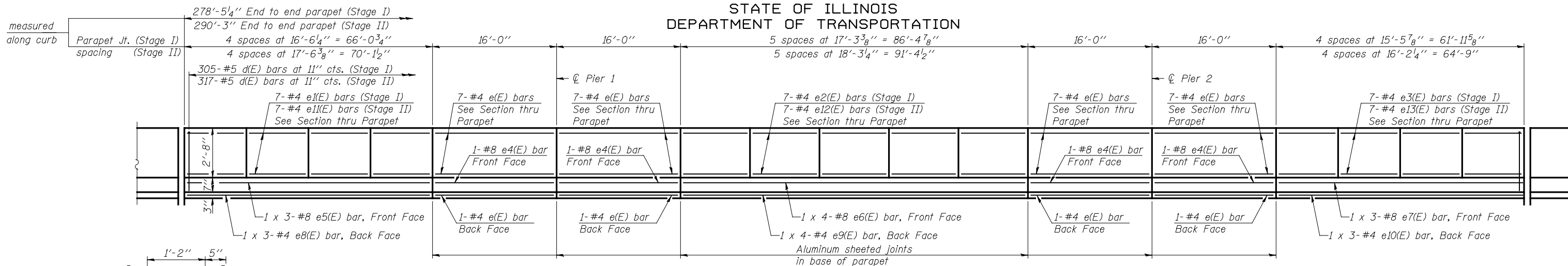
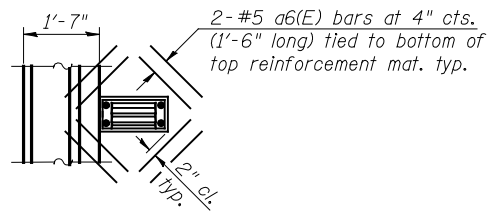


STATE OF ILLINOIS  
DEPARTMENT OF TRANSPORTATION

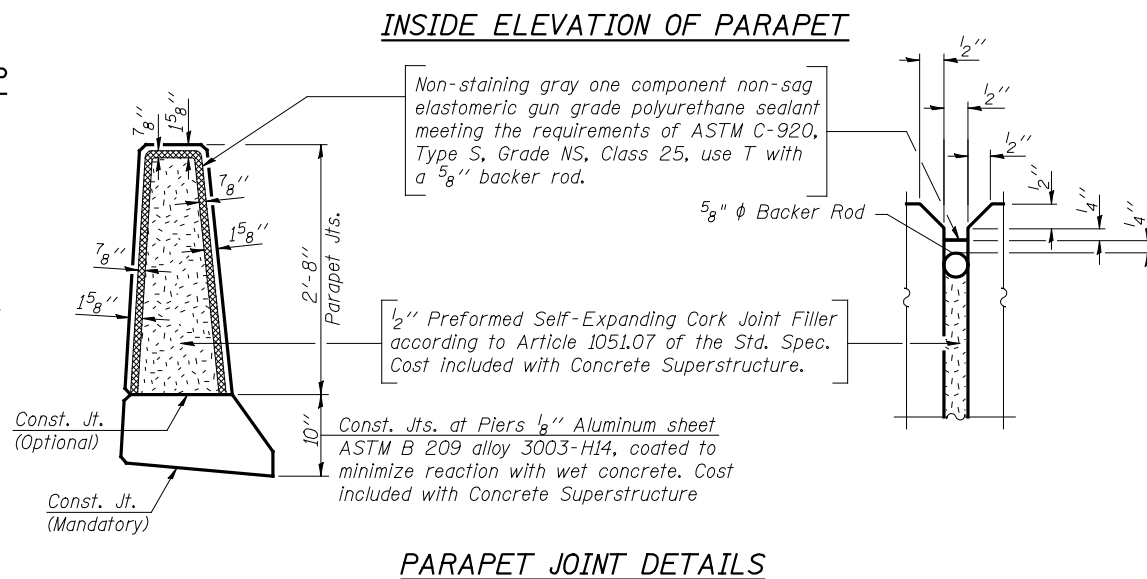


SECTION THRU PARAPET

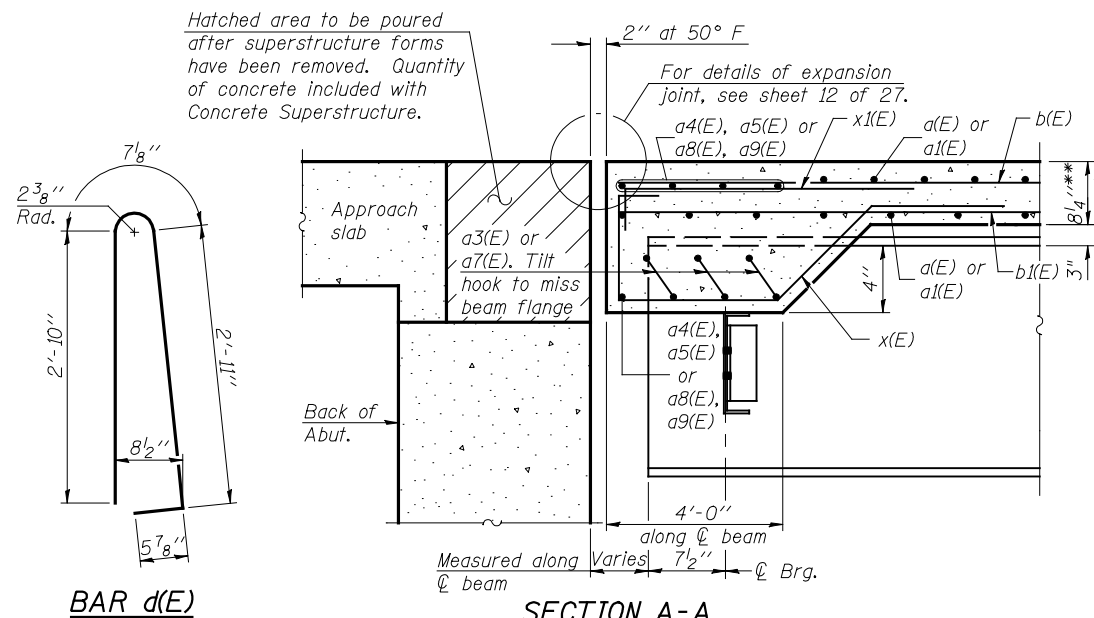


PLAN AT SCUPPER

Note:  
Cut longitudinal reinforcement to clear drainage scuppers.

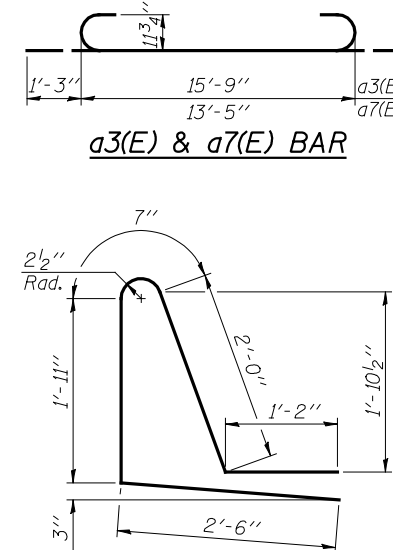


PARAPET JOINT DETAILS

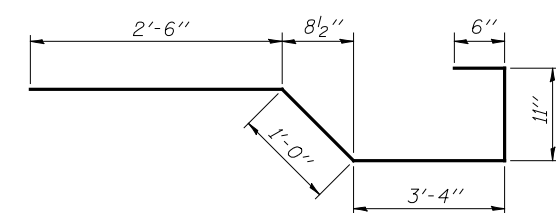


BAR d(E)

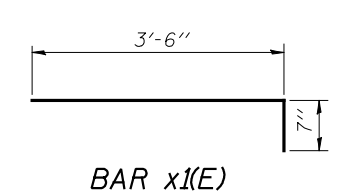
SECTION A-A



BAR d1(E)



BAR x(E)



BAR x1(E)

SUPERSTRUCTURE  
BILL OF MATERIAL

| Bar                              | No.      | Size | Length  | Shape |
|----------------------------------|----------|------|---------|-------|
| a(E)                             | 986      | #5   | 19'-10" | —     |
| a1(E)                            | 1019     | #5   | 23'-10" | —     |
| a2(E)                            | 1219     | #6   | 6'-6"   | —     |
| a3(E)                            | 12       | #9   | 18'-3"  | U     |
| a4(E)                            | 5        | #9   | 42'-0"  | —     |
| a5(E)                            | 5        | #9   | 51'-9"  | —     |
| a6(E)                            | 32       | #5   | 1'-6"   | —     |
| a7(E)                            | 12       | #9   | 15'-11" | U     |
| a8(E)                            | 5        | #9   | 35'-9"  | —     |
| a9(E)                            | 5        | #9   | 43'-1"  | —     |
| b(E)                             | 432      | #5   | 34'-6"  | —     |
| b1(E)                            | 88       | #6   | 50'-0"  | —     |
| b2(E)                            | 328      | #5   | 38'-6"  | —     |
| d(E)                             | 622      | #5   | 6'-10"  | —     |
| d1(E)                            | 622      | #5   | 8'-2"   | —     |
| e(E)                             | 64       | #4   | 15'-8"  | —     |
| e1(E)                            | 28       | #4   | 16'-2"  | —     |
| e2(E)                            | 35       | #4   | 16'-11" | —     |
| e3(E)                            | 28       | #4   | 15'-2"  | —     |
| e4(E)                            | 8        | #8   | 15'-8"  | —     |
| e5(E)                            | 6        | #8   | 26'-8"  | —     |
| e6(E)                            | 8        | #8   | 26'-8"  | —     |
| e7(E)                            | 6        | #8   | 24'-11" | —     |
| e8(E)                            | 6        | #4   | 24'-7"  | —     |
| e9(E)                            | 8        | #4   | 24'-3"  | —     |
| e10(E)                           | 6        | #4   | 22'-10" | —     |
| e11(E)                           | 28       | #4   | 17'-2"  | —     |
| e12(E)                           | 35       | #4   | 17'-11" | —     |
| e13(E)                           | 28       | #4   | 15'-10" | —     |
| x(E)                             | 70       | #5   | 8'-3"   | —     |
| x1(E)                            | 70       | #5   | 4'-1"   | —     |
| Reinforcement Bars, Epoxy Coated | Pound    |      | 112700  |       |
| Concrete Superstructure          | Cu. Yds. |      | 455.6   |       |

Bars indicated thus 1 x 3-#8 etc. indicates 1 line of bars with 3 lengths per line.

SUPERSTRUCTURE DETAILS  
STRUCTURE NO. 057-0250

| SHEET | F.A.I. RTE. | SECTION             | COUNTY   | TOTAL SHEETS     | SHEET NO. |
|-------|-------------|---------------------|----------|------------------|-----------|
| 9     | 55          | (57-THB-1)BR        | MCLAN    | 153              | 59        |
| OF 27 |             | STA. 626+53.70      |          |                  |           |
|       |             | FED. ROAD DIST. NO. | ILLINOIS | FED. AID PROJECT |           |

**JD** Johnson, Depp & Quisenberry  
CONSULTING ENGINEERS  
Springfield, Illinois

DESIGNED: DCD DRAWN: P. Ray  
CHECKED: CMV CHECKED: CMV/DCD

S-D 11-1-09 (Modified)

FILE: J:\JDO\10169 IL-D5 1-55NB McLeon\14EB\0570250-70520-008-superstr.dgn USER: DCD PRINT DATE: 08/06/2010 20:56:20 SAVE DATE: 8/6/2010