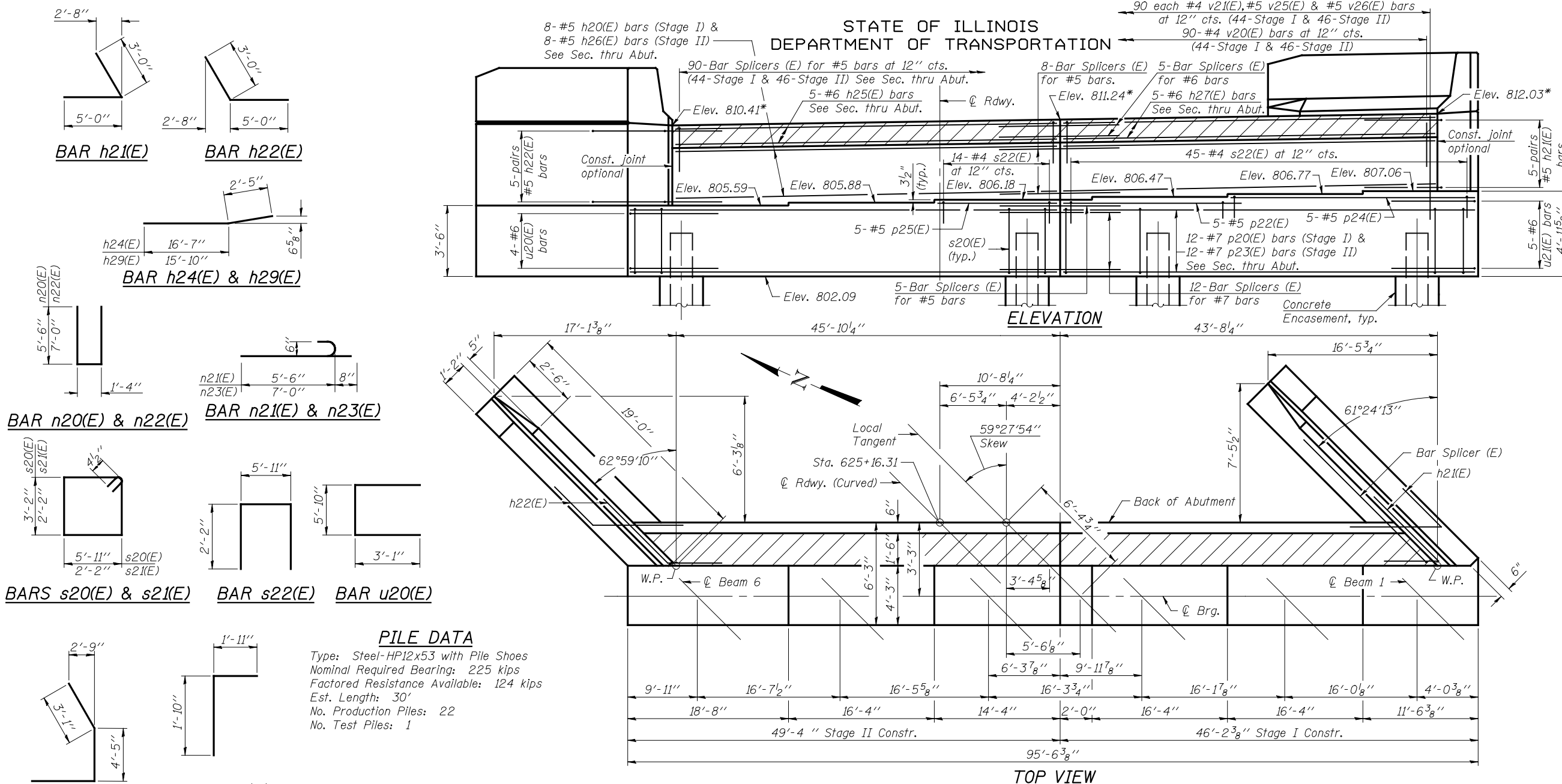


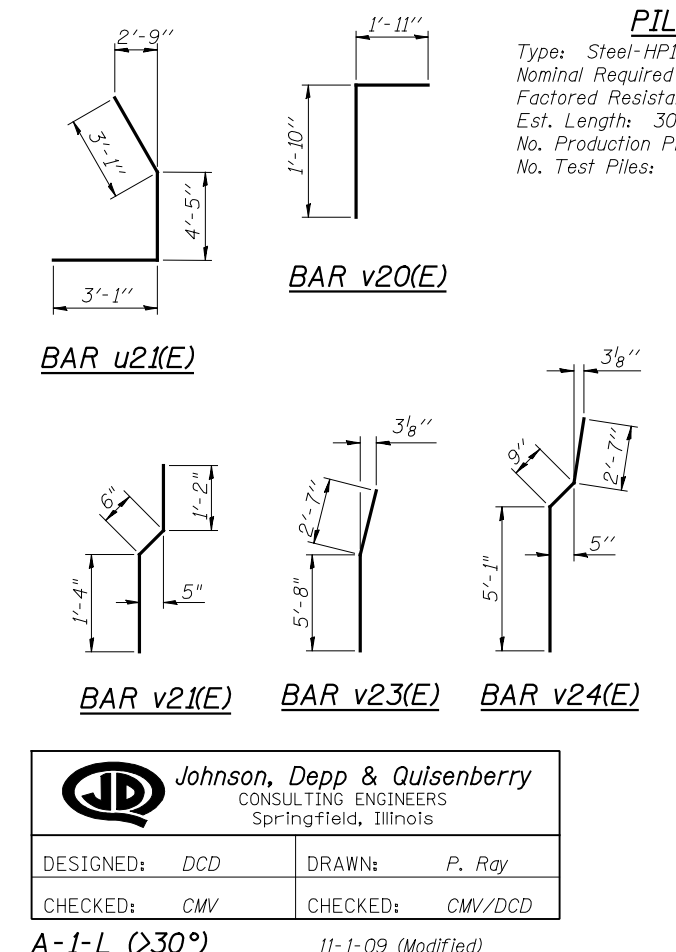
**STATE OF ILLINOIS
DEPARTMENT OF TRANSPORTATION**



* Before grinding according to bridge smoothness specifications.
** Indicates bars to be field cut or bent to fit skewed end.

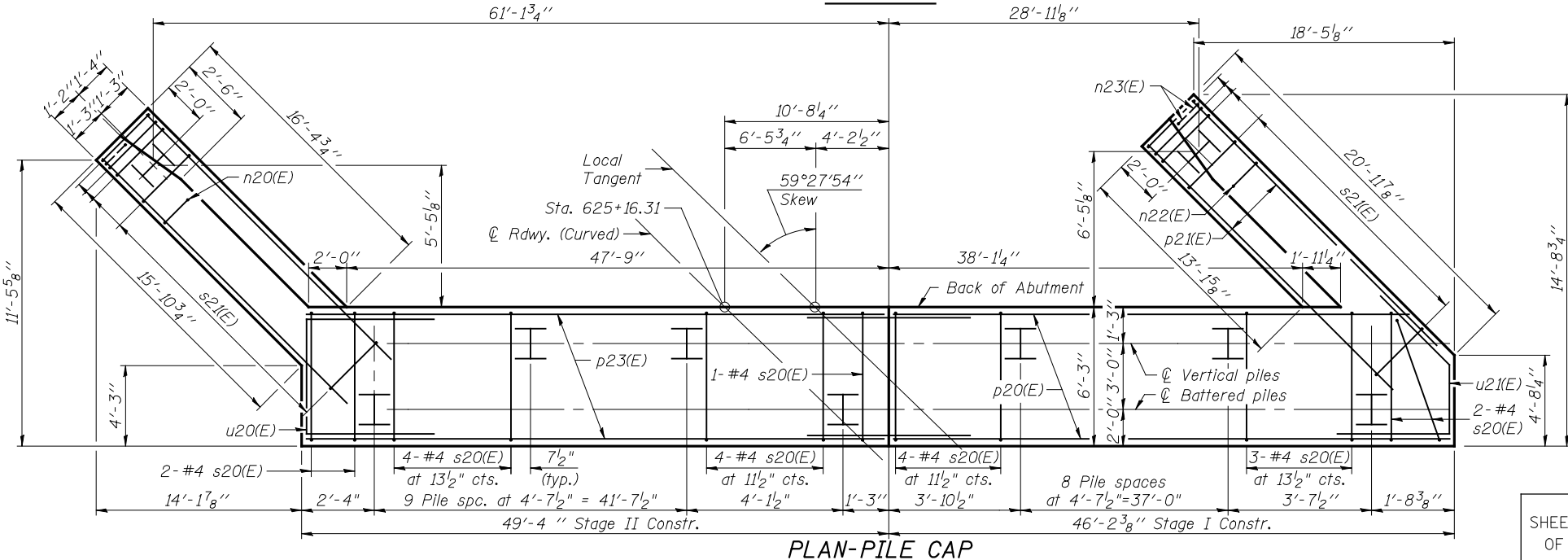
**ABUTMENT
BILL OF MATERIAL**

| Bar | No. | Size | Length | Shape |
|----------------------------------|-----|---------|---------|-------|
| ** h20(E) | 8 | #5 | 45'-8" | ┌ |
| h21(E) | 10 | #5 | 8'-0" | └ |
| h22(E) | 10 | #5 | 8'-0" | ┌ |
| h23(E) | 11 | #4 | 20'-8" | └ |
| h24(E) | 7 | #4 | 19'-0" | ┌ |
| h25(E) | 5 | #6 | 48'-0" | └ |
| h26(E) | 8 | #5 | 48'-0" | ┌ |
| ** h27(E) | 5 | #6 | 45'-8" | ┌ |
| h28(E) | 11 | #4 | 15'-7" | └ |
| h29(E) | 7 | #4 | 18'-3" | ┌ |
| n20(E) | 16 | #6 | 12'-4" | ┌ |
| n21(E) | 6 | #6 | 6'-2" | └ |
| n22(E) | 16 | #6 | 15'-4" | ┌ |
| n23(E) | 6 | #6 | 7'-8" | ┌ |
| ** p20(E) | 12 | #7 | 45'-10" | ┌ |
| p21(E) | 12 | #7 | 20'-8" | └ |
| p22(E) | 5 | #5 | 19'-4" | ┌ |
| p23(E) | 12 | #7 | 48'-11" | └ |
| ** p24(E) | 5 | #5 | 27'-6" | ┌ |
| ** p25(E) | 5 | #5 | 14'-0" | ┌ |
| s20(E) | 84 | #4 | 18'-11" | ┌ |
| s21(E) | 40 | #4 | 9'-5" | └ |
| s22(E) | 59 | #4 | 10'-3" | ┌ |
| u20(E) | 4 | #6 | 12'-0" | ┌ |
| u21(E) | 5 | #6 | 10'-7" | └ |
| v20(E) | 90 | #4 | 3'-9" | ┌ |
| v21(E) | 90 | #4 | 3'-0" | └ |
| v22(E) | 38 | #6 | 8'-3" | ┌ |
| v23(E) | 6 | #6 | 8'-3" | └ |
| v24(E) | 32 | #6 | 8'-5" | ┌ |
| v25(E) | 90 | #5 | 7'-1" | └ |
| v26(E) | 90 | #5 | 5'-9" | └ |
| Structure Excavation | | Cu. Yd. | 438 | |
| Concrete Structures | | Cu. Yd. | 140.3 | |
| Reinforcement Bars, Epoxy Coated | | Pound | 10460 | |
| Furnishing Steel Piles, HP12x53 | | Foot | 660 | |
| Driving Piles | | Foot | 660 | |
| Pile Shoes | | Each | 23 | |
| Test Pile, HP12x53 | | Each | 1 | |
| Concrete Encasement | | Cu. Yd. | 8.0 | |
| Concrete Sealer | | Sq. Ft. | 1043 | |



PILE DATA

Type: Steel-HP12x53 with Pile Shoes
Nominal Required Bearing: 225 kips
Factored Resistance Available: 124 kips
Est. Length: 30'
No. Production Piles: 22
No. Test Piles: 1



For details of Bar Splicers, see sheet 25 of 27.
For details of piles and Concrete Encasement, see sheet 24 of 27.
See sheet 2 of 27 for Foundation Layout showing relative position of existing and proposed piles.

**NORTH ABUTMENT
STRUCTURE NO. 057-0250**

| | | | | | |
|------------------------------------|-------------------|-------------------------|-----------------------|---|-----------------|
| SHEET 18 OF 27 | F.A.I. RTE. 55 | SECTION (57-THB-1BR) | COUNTY MCLEAN | TOTAL SHEETS 153 | SHEET NO. 68 |
| A-1-L (>30°) 11-1-09 (Modified) | | | CONTRACT NO. 70520 | FED. ROAD DIST. NO. ILLINOIS FED. AID PROJECT | |

PRINT DATE: 08/06/2010 20:56:50 USER: DCD
 FILE: J:\AJDO\10169 IL-D5 L-55NB McLean\H55NB-14EB\0570250-70520-018-Nabut.dgn