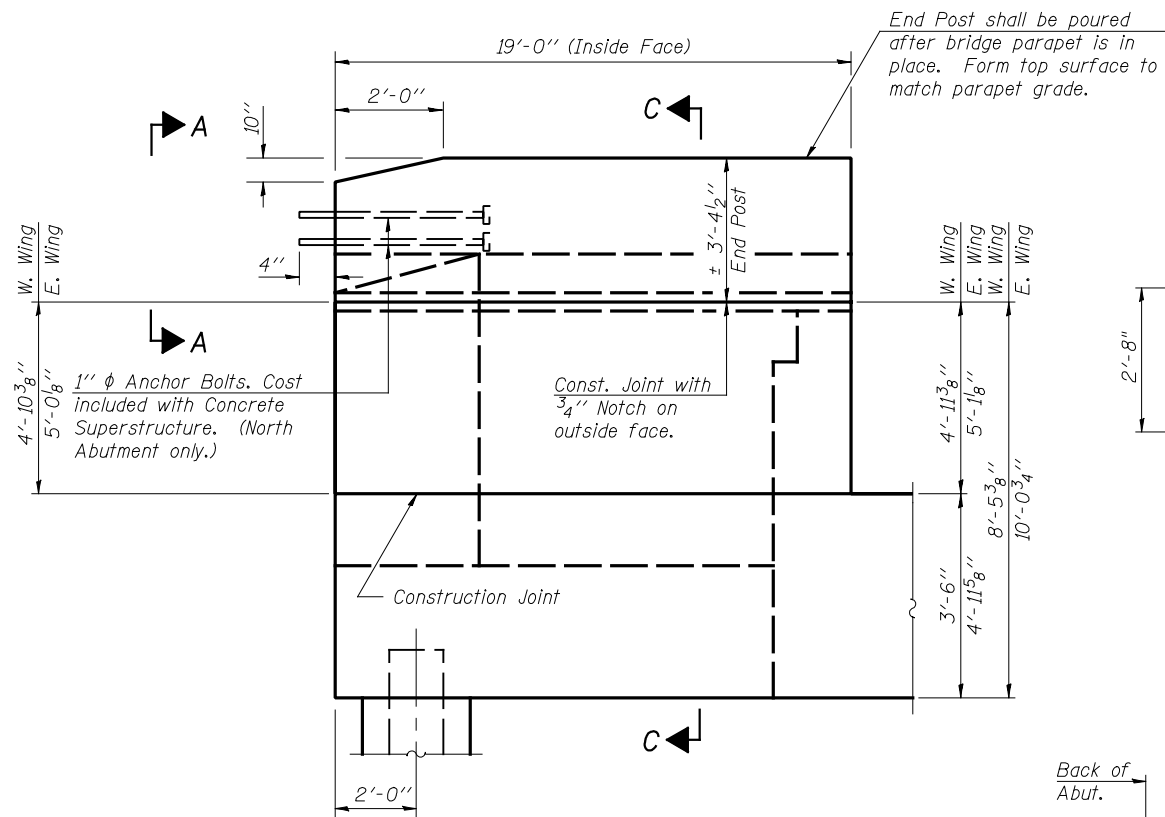
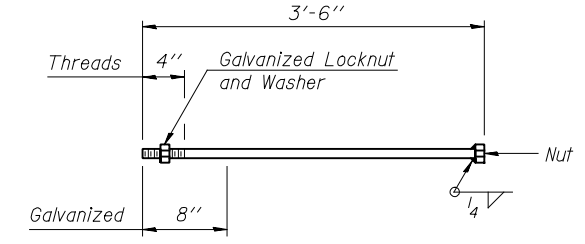


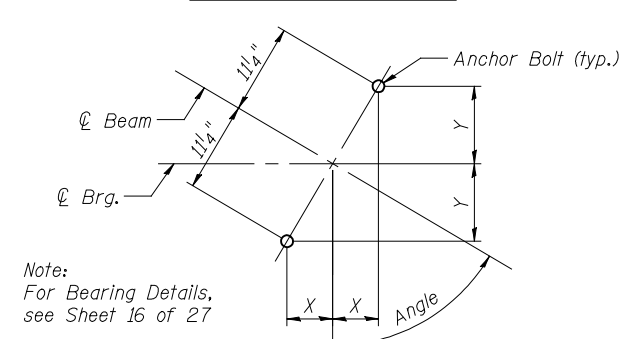
STATE OF ILLINOIS
DEPARTMENT OF TRANSPORTATION



WING WALL ELEVATION
Showing Dimensions



1" φ ANCHOR BOLT



ANCHOR BOLT LAYOUT

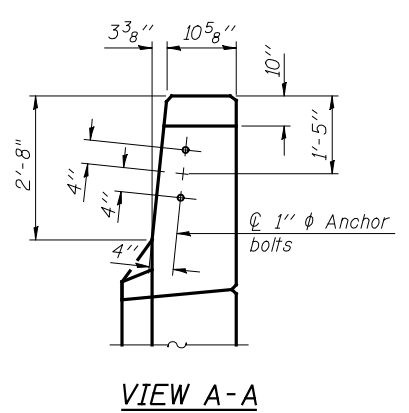
ANCHOR BOLT LAYOUT DIMENSIONS

	Beam 1	Beam 2	Beam 3	Beam 4	Beam 5	Beam 6
Angle	61.25°	61.53°	61.82°	62.11°	62.40°	62.69°
X	5 3/8"	5 3/8"	5 3/8"	5 1/4"	5 1/4"	5 1/8"
Y	9 1/8"	9 1/8"	9 1/8"	10"	10"	10"

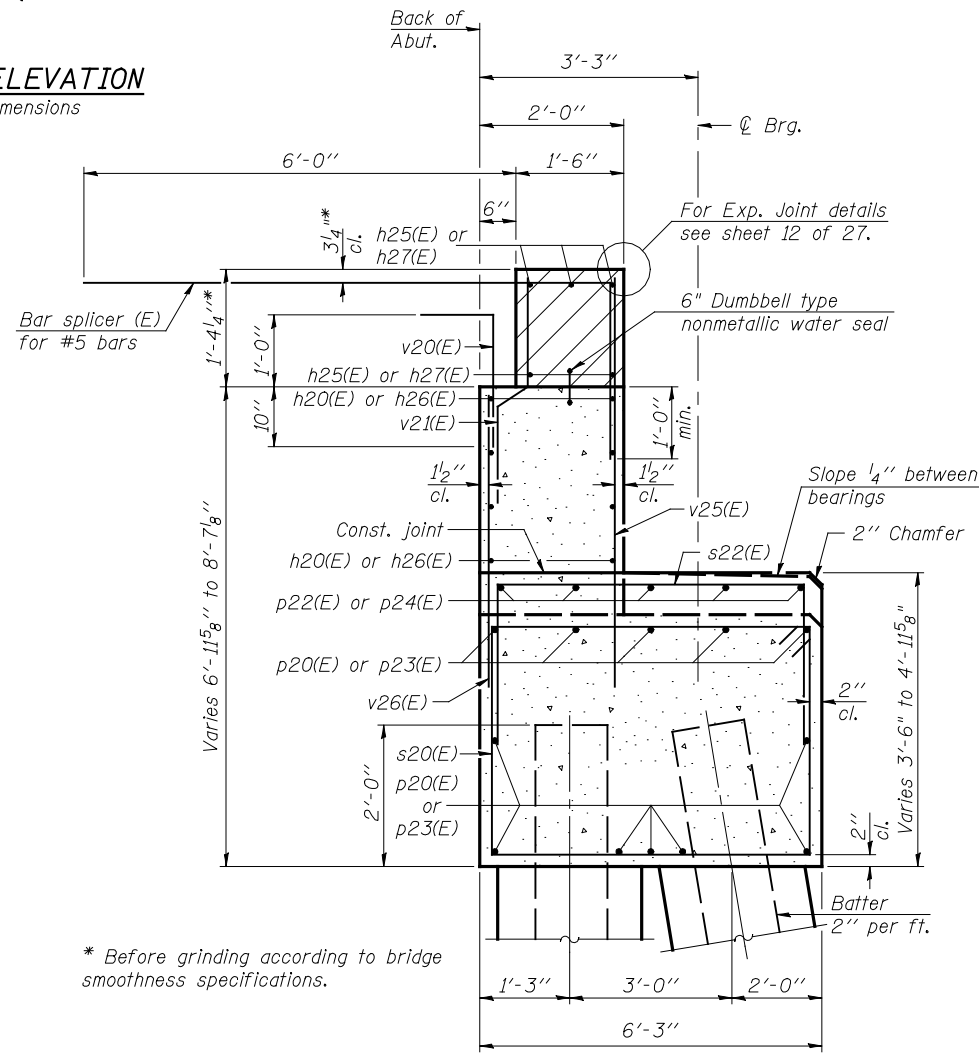
JD Johnson, Depp & Quisenberry
CONSULTING ENGINEERS
Springfield, Illinois

DESIGNED: DCD	DRAWN: P. Ray
CHECKED: CMV	CHECKED: CMV/DCD

A-1-D 11-1-09 (Modified)



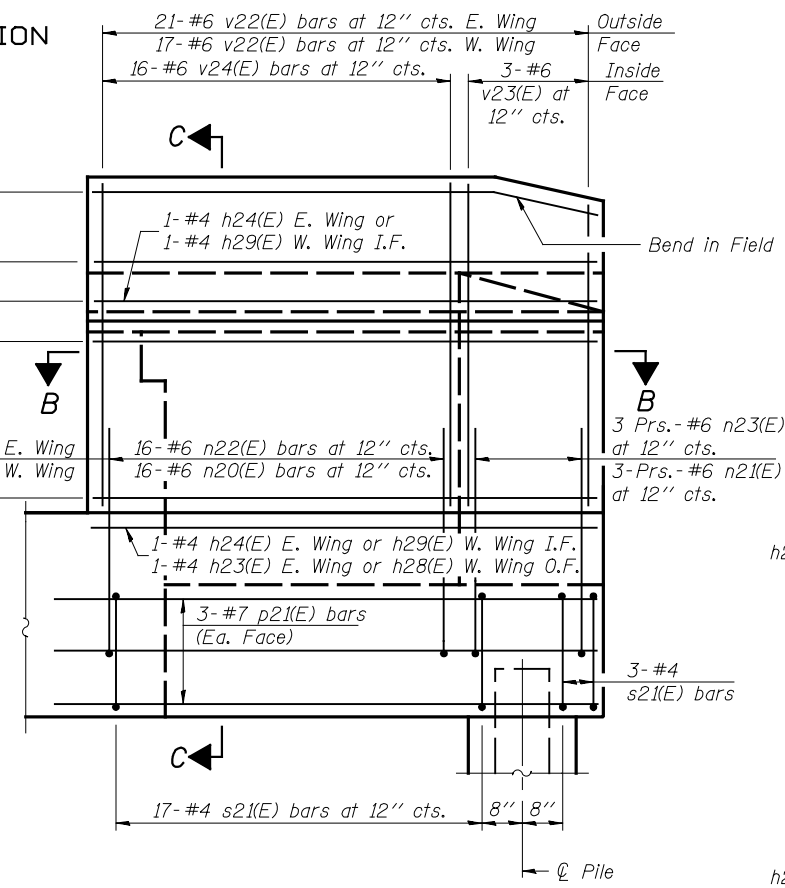
VIEW A-A



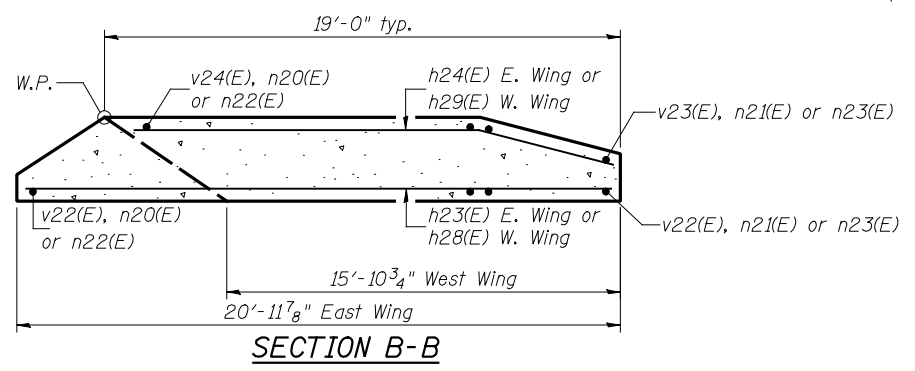
SEC. THRU ABUT.

* Before grinding according to bridge smoothness specifications.

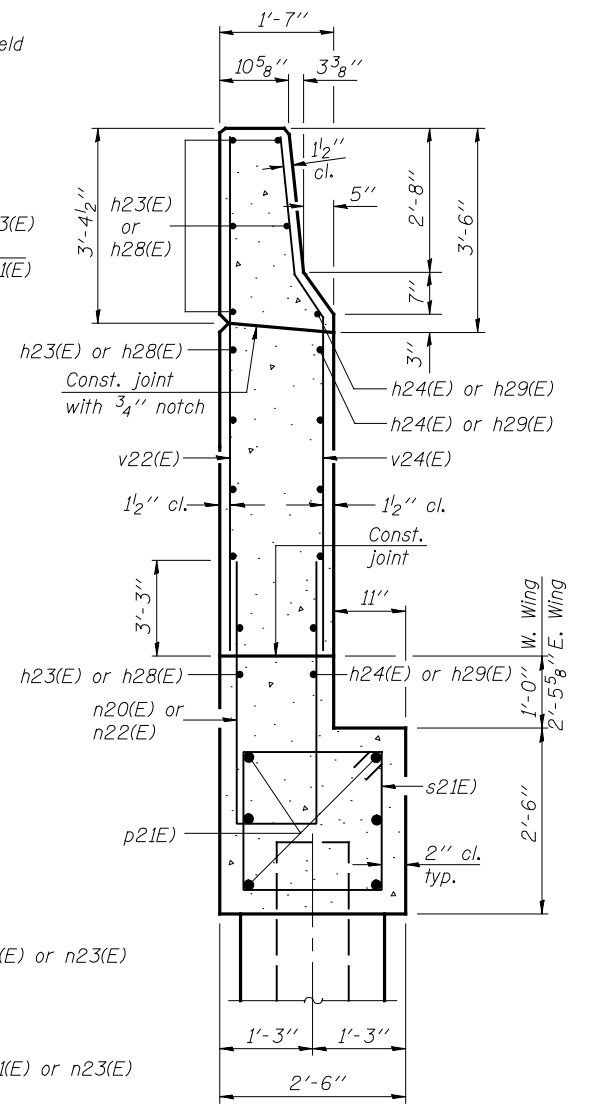
2-#4 h23(E) E. Wing or 2-#4 h28(E) W. Wing I.F.
3-#4 h23(E) E. Wing or 3-#4 h28(E) W. Wing O.F.



WING WALL ELEVATION
Showing Reinforcement



Notes:
Hatched area to be poured after superstructure false work has been removed. Quantity of concrete included with Concrete Superstructure. Space reinforcement in cap to miss anchor bolts. Pour steps monolithically with cap. Quantity of concrete in end post included with Concrete Superstructure on sheet 9 of 27. For Concrete Encasement details, see sheet 24 of 27.



SECTION C-C

**NORTH ABUTMENT
STRUCTURE NO. 057-0250**

SHEET 19 OF 27	F.A.I. RTE.	SECTION	COUNTY	TOTAL SHEETS	SHEET NO.
	55	(57-THB-1)BR	MCLEAN	153	69
STA. 626+53.70		CONTRACT NO. 70520			
FED. ROAD DIST. NO. ILLINOIS FED. AID PROJECT					

FILE: J:\JDO\10169 IL-D5 I-55NB McLean\14EEB\0570250-70520-018-Nabut.dgn

USER: DCD

PRINT DATE: 08/06/2010 20:56:53

SAVE DATE: 8/6/2010