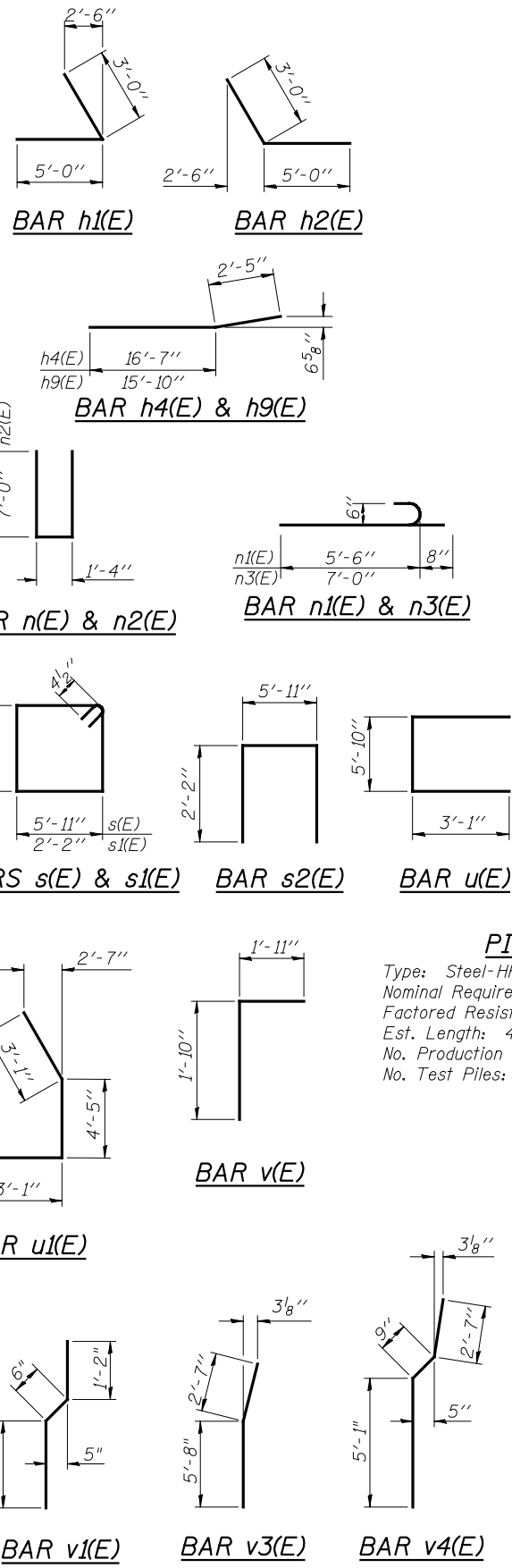
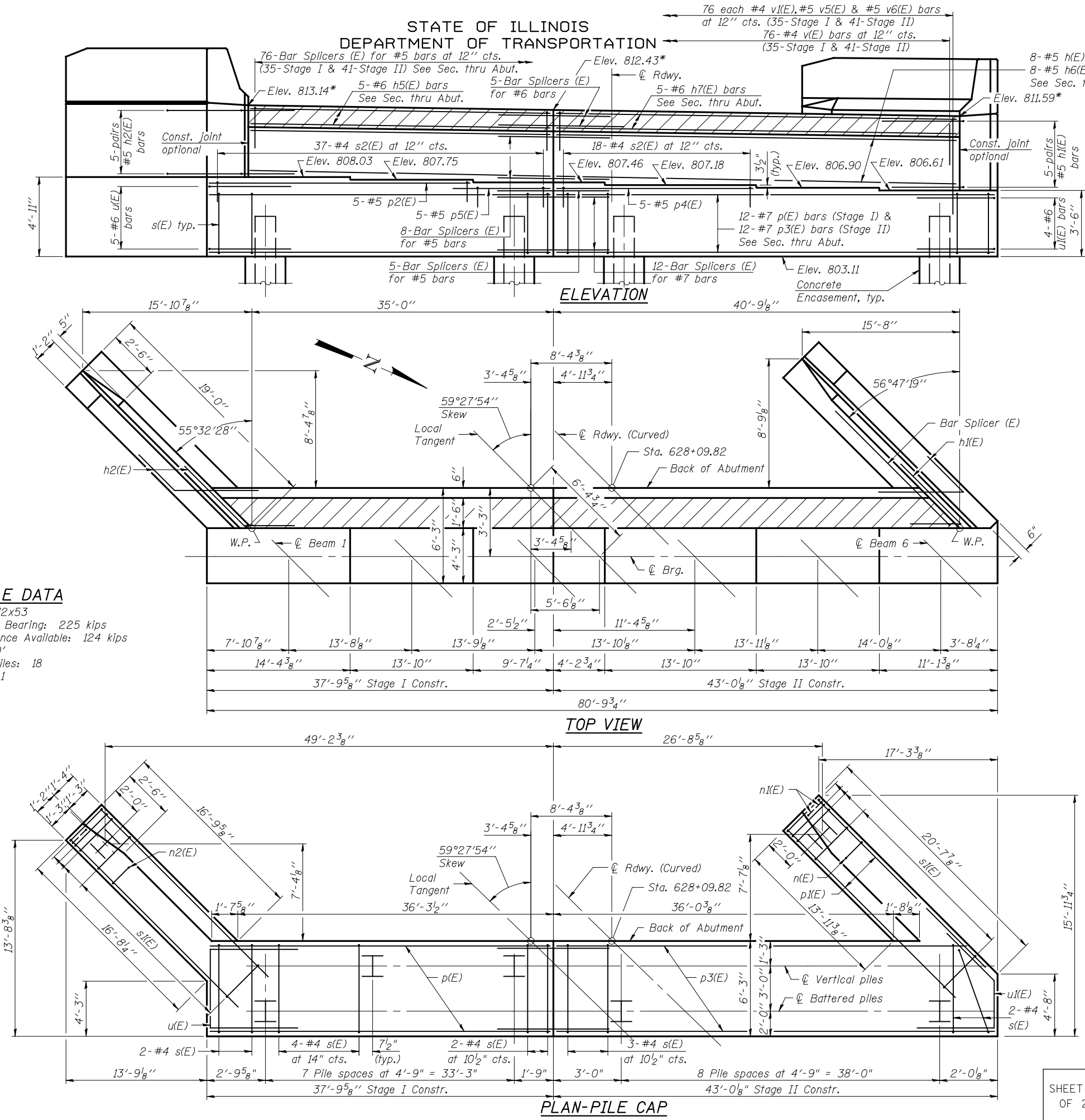


FILE: J:\A\JO\10169 IL-D5 I-55NB McLean\H55NB-I4EB\0570250-70520-020-Sabuf.dgn  
 USER: DCD  
 PRINT DATE: 08/06/2010 20:56:57 SAVE DATE: 8/6/2010

STATE OF ILLINOIS  
 DEPARTMENT OF TRANSPORTATION



**PILE DATA**  
 Type: Steel-HP12x53  
 Nominal Required Bearing: 225 kips  
 Factored Resistance Available: 124 kips  
 Est. Length: 40'  
 No. Production Piles: 18  
 No. Test Piles: 1

\* Before grinding according to bridge smoothness specifications.  
 \*\* Indicates bars to be field cut or bent to fit skewed end.

**ABUTMENT  
 BILL OF MATERIAL**

Bar	No.	Size	Length	Shape
h1(E)	8	#5	36'-10"	
h2(E)	10	#5	8'-0"	
h3(E)	11	#4	20'-4"	
h4(E)	7	#4	19'-0"	
h5(E)	5	#6	36'-10"	
h6(E)	8	#5	42'-6"	
h7(E)	5	#6	42'-6"	
h8(E)	11	#4	16'-5"	
h9(E)	7	#4	18'-3"	
n1(E)	16	#6	12'-4"	
n2(E)	6	#6	6'-2"	
n3(E)	16	#6	15'-4"	
n3(E)	6	#6	7'-8"	
p1(E)	12	#7	37'-5"	
p2(E)	12	#7	20'-4"	
p2(E)	5	#5	27'-10"	
p3(E)	12	#7	42'-8"	
p4(E)	5	#5	17'-9"	
p5(E)	5	#5	10'-7"	
s(E)	69	#4	18'-11"	
s1(E)	40	#4	9'-5"	
s2(E)	55	#4	10'-3"	
u(E)	5	#6	12'-0"	
u1(E)	4	#6	10'-7"	
v(E)	76	#4	3'-9"	
v1(E)	76	#4	3'-0"	
v2(E)	38	#6	8'-6"	
v3(E)	6	#6	8'-3"	
v4(E)	32	#6	8'-5"	
v5(E)	76	#5	7'-1"	
v6(E)	76	#5	5'-9"	
Structure Excavation		Cu. Yd.	961	
Concrete Structures		Cu. Yd.	121.5	
Reinforcement Bars, Epoxy Coated		Pound	9400	
Furnishing Steel Piles, HP12x53		Foot	720	
Driving Piles		Foot	720	
Test Pile, HP12x53		Each	1	
Concrete Encasement		Cu. Yd.	6.7	
Concrete Sealer		Sq. Ft.	882	

For details of Bar Splicers, see sheet 25 of 27.  
 For details of piles and Concrete Encasement, see sheet 24 of 27.  
 See sheet 2 of 27 for Foundation Layout showing relative position of existing and proposed piles.

**SOUTH ABUTMENT  
 STRUCTURE NO. 057-0250**

SHEET 20 OF 27	F.A.I. RTE. 55	SECTION (57-THB-1BR)	COUNTY MCLEAN	TOTAL SHEETS 153	SHEET NO. 70
A-1-L (>30°)		DATE 11-1-09 (Modified)	CONTRACT NO. 70520		FED. ROAD DIST. NO. ILLINOIS FED. AID PROJECT

**Johnson, Depp & Quisenberry**  
 CONSULTING ENGINEERS  
 Springfield, Illinois

DESIGNED: DCD      DRAWN: P. Ray  
 CHECKED: CMV      CHECKED: CMV/DCD