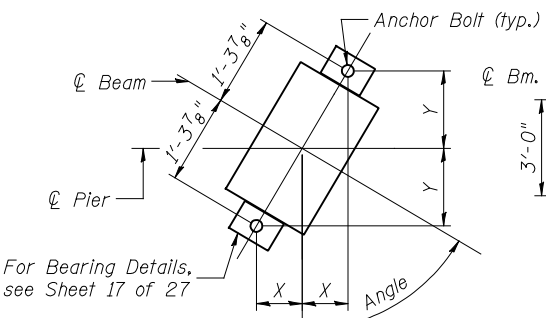


ANCHOR BOLT LAYOUT DIMENSIONS

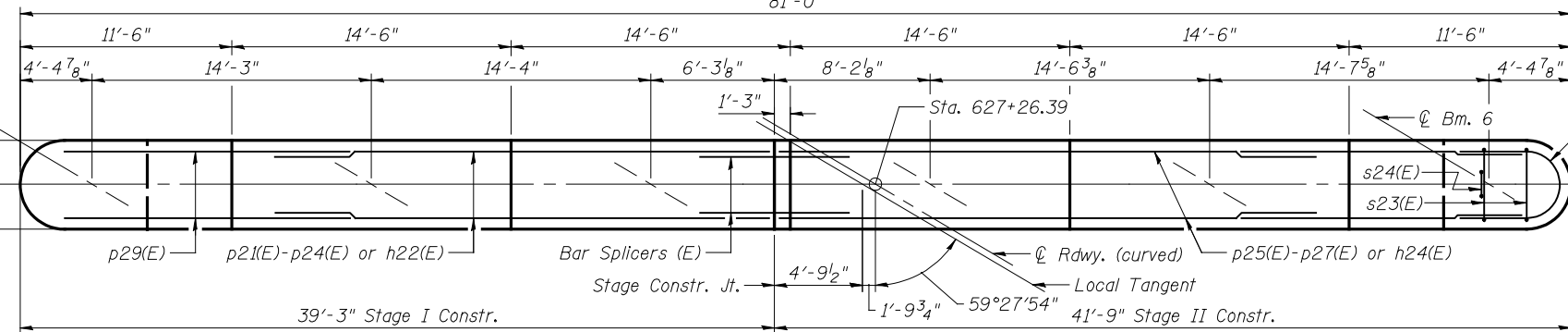
Angle	Beam 1	Beam 2	Beam 3	Beam 4	Beam 5	Beam 6
Angle	57.31°	57.55°	57.79°	58.04°	58.29°	58.54°
X	8 ⁵ / ₈ "	8 ¹ / ₂ "	8 ¹ / ₂ "	8 ³ / ₈ "	8 ³ / ₈ "	8 ¹ / ₂ "
Y	1'-1 ³ / ₈ "	1'-1 ³ / ₈ "	1'-1 ³ / ₈ "	1'-1 ¹ / ₂ "	1'-1 ¹ / ₂ "	1'-1 ¹ / ₂ "



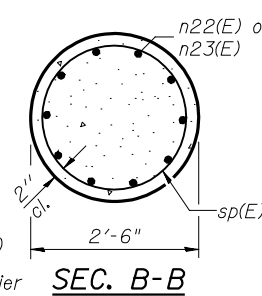
ANCHOR BOLT LAYOUT

STATE OF ILLINOIS
DEPARTMENT OF TRANSPORTATION

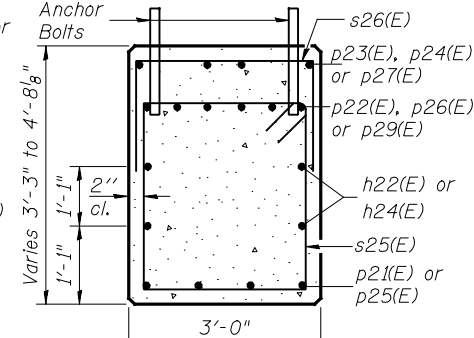
81'-0"



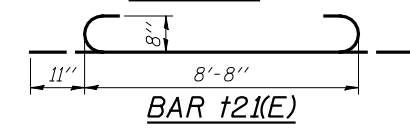
TOP PLAN



SEC. B-B



SEC. A-A

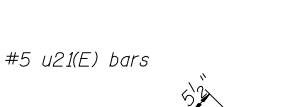


BAR t21(E)

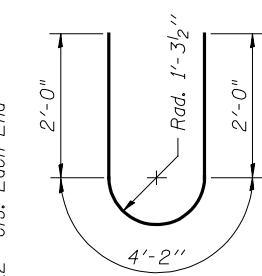
BILL OF MATERIAL

Bar	No.	Size	Length	Shape
h21(E)	15	#5	31'-1"	—
h22(E)	4	#5	37'-7"	—
h23(E)	15	#5	33'-7"	—
h24(E)	4	#5	40'-1"	—
n21(E)	6	#5	6'-1"	U
n22(E)	60	#8	6'-5"	U
n23(E)	60	#8	8'-6"	U
p21(E)	4	#9	32'-10"	—
p22(E)	4	#9	27'-7"	—
p23(E)	4	#5	15'-4"	—
p24(E)	4	#5	24'-4"	—
p25(E)	4	#9	35'-4"	—
p26(E)	4	#9	30'-1"	—
p27(E)	4	#5	15'-5"	—
p28(E)	8	#5	6'-8"	—
p29(E)	12	#10	17'-5"	U
s21(E)	66	#5	13'-8"	U
s22(E)	66	#5	15'-2"	U
s23(E)	32	#5	6'-10"	U
s24(E)	20	#5	5'-2"	U
s25(E)	68	#5	12'-1"	U
s26(E)	54	#5	7'-0"	U
sp(E)	6	#4	12'-1"	W
t21(E)	66	#8	10'-6"	U
t22(E)	69	#5	8'-8"	—
u21(E)	21	#5	8'-2"	U
v21(E)	6	#5	6'-3"	—
w21(E)	18	#5	32'-8"	—
w22(E)	18	#5	35'-2"	—
Structure Excavation			Cu. Yd.	182
Concrete Structures			Cu. Yd.	162.4
Reinforcement Bars, Epoxy Coated			Pound	15430
Furnishing Steel Piles, HP12x53			Foot	630
Driving Piles			Foot	630
Test Pile, HP12x53			Each	1
Concrete Sealer			Sq Ft	2263

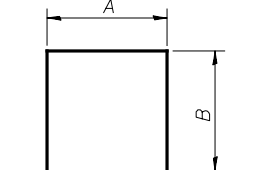
BARS n21(E)-n23(E) & p29(E)



BAR s25(E)



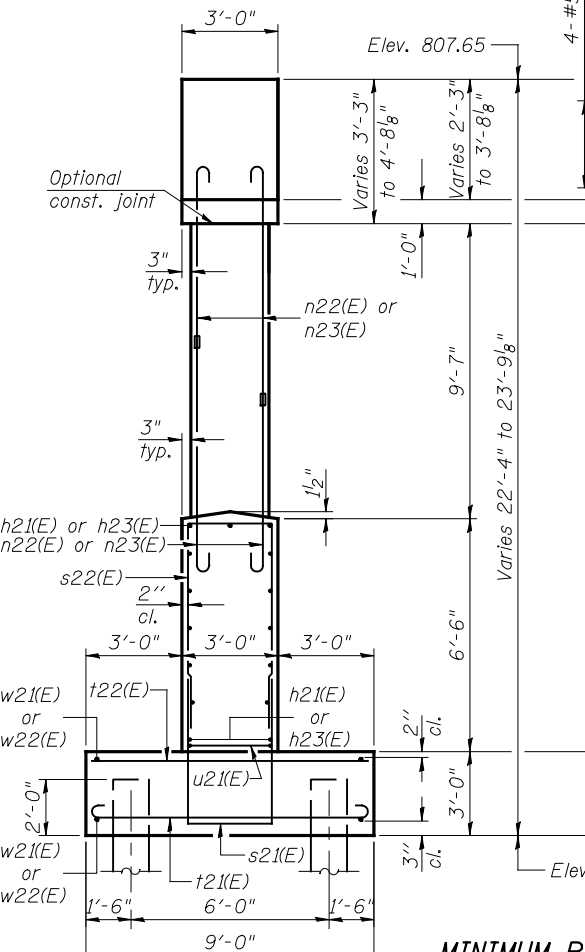
BAR u21(E)



BARS s21(E)-s24(E) & s26(E)

A & B DIMENSIONS

Bar	A	B
s21(E)	2'-8"	5'-6"
s22(E)	2'-8"	6'-3"
s23(E)	2'-8"	2'-1"
s24(E)	1'-0"	2'-1"
s26(E)	2'-8"	2'-2"



END VIEW

MINIMUM BAR LAP
#9 bar = 5'-11"

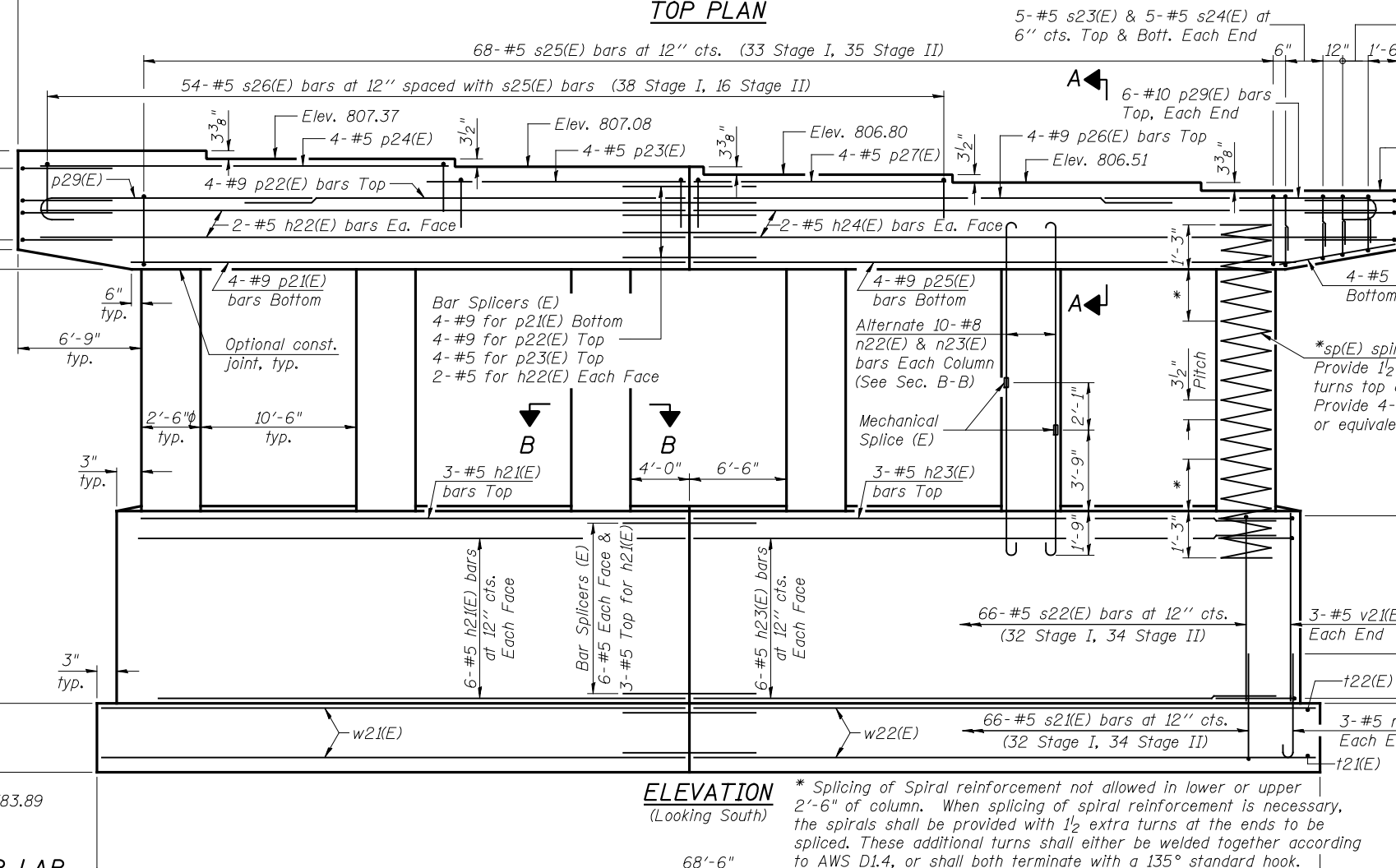
PILE DATA

Type: Steel-HP12x53
Nominal Required Bearing: 415 kips
Factored Resistance Available: 228 kips
Est. Length: 30'
No. Production Piles: 21
No. Test Piles: 1



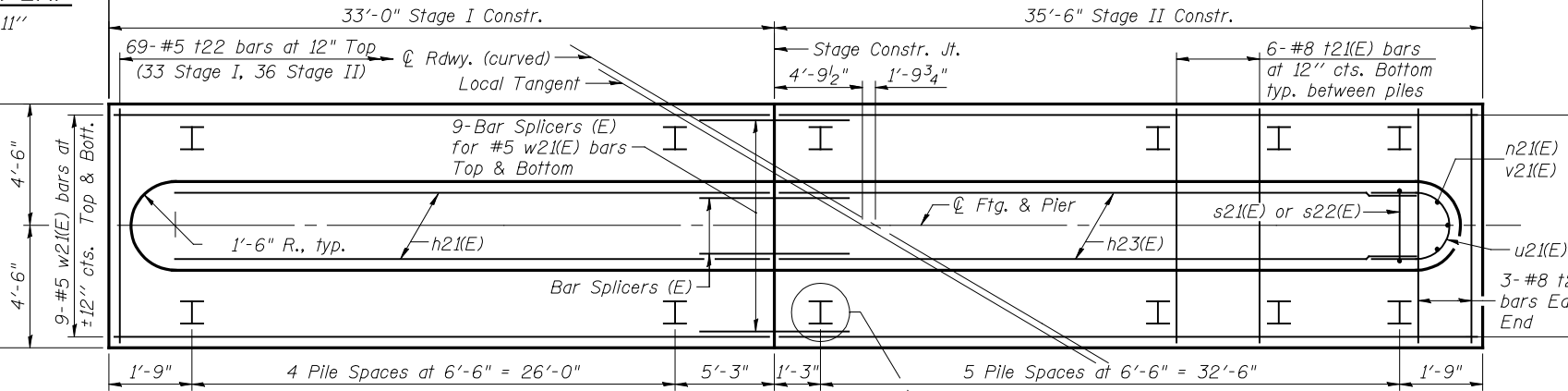
DESIGNED: DCD	DRAWN: P. Ray
CHECKED: CMV	CHECKED: CMV/DCD

P-26 11-1-09 (Modified)



ELEVATION
(Looking South)

* Splicing of Spiral reinforcement not allowed in lower or upper 2'-6" of column. When splicing of spiral reinforcement is necessary, the spirals shall be provided with 1/2 extra turns at the ends to be spliced. These additional turns shall either be welded together according to AWS D1.4, or shall both terminate with a 135° standard hook.



FOOTING PLAN

This pile shall be driven in Stage I (to avoid conflict with new deck)

Notes: ** Length is height of spiral.
Space reinforcement in cap to miss anchor bolts. Four steps monolithically with cap.
For details of piles, see sheet 24 of 27.
For details of Bar Splicers and Mechanical Splice, see sheet 25 of 27.

PIER 2

STRUCTURE NO. 057-0250

SHEET 23 OF 27	F.A.I. RTE. 55	SECTION (57-THB-1BR)	COUNTY MCLAN	TOTAL SHEETS 153	SHEET NO. 73
P-26		STA. 626+53.70	CONTRACT NO. 70520	FED. ROAD DIST. NO. ILLINOIS FED. AID PROJECT	

FILE: J:\A\DO\1069 IL-D5 I-55NB McLean\H55NB-I4EB\0570250-70520-022-piers.dgn
 USER: DCD
 PRINT DATE: 08/06/2010 20:51:06 SAVE DATE: 8/6/2010