

STATE OF ILLINOIS  
DEPARTMENT OF TRANSPORTATION

**GENERAL NOTES**

Fasteners shall be AASHTO M164 Type 1, mechanically galvanized bolts. Bolts  $\frac{7}{8}$  in.  $\phi$ , holes  $\frac{15}{16}$  in.  $\phi$ , unless otherwise noted.

Calculated weight of Structural Steel = 13,650 lbs. (M270 Gr. 36)  
217,040 lbs. (M270 Gr. 50)

No field welding is permitted except as specified in the contract documents.

Reinforcement bars shall conform to the requirements of ASTM A 706 Gr 60. See Special Provisions.

Reinforcement bars designated (E) shall be epoxy coated.

If the Contractor elects to use cantilever forming brackets on the exterior beams, the brackets shall be placed at the same locations as required for the hardwood blocks in Article 503.06(b) of the Standard Specifications. If additional cantilever forming brackets are required, hardwood blocking shall be wedged between the exterior and first interior beam at each of these additional bracket locations.

Bearing seat surfaces shall be constructed or adjusted to the designated elevations within a tolerance of  $\frac{1}{8}$  inch (0.01 ft.). Adjustment shall be made either by grinding the surface or by shimming the bearings.

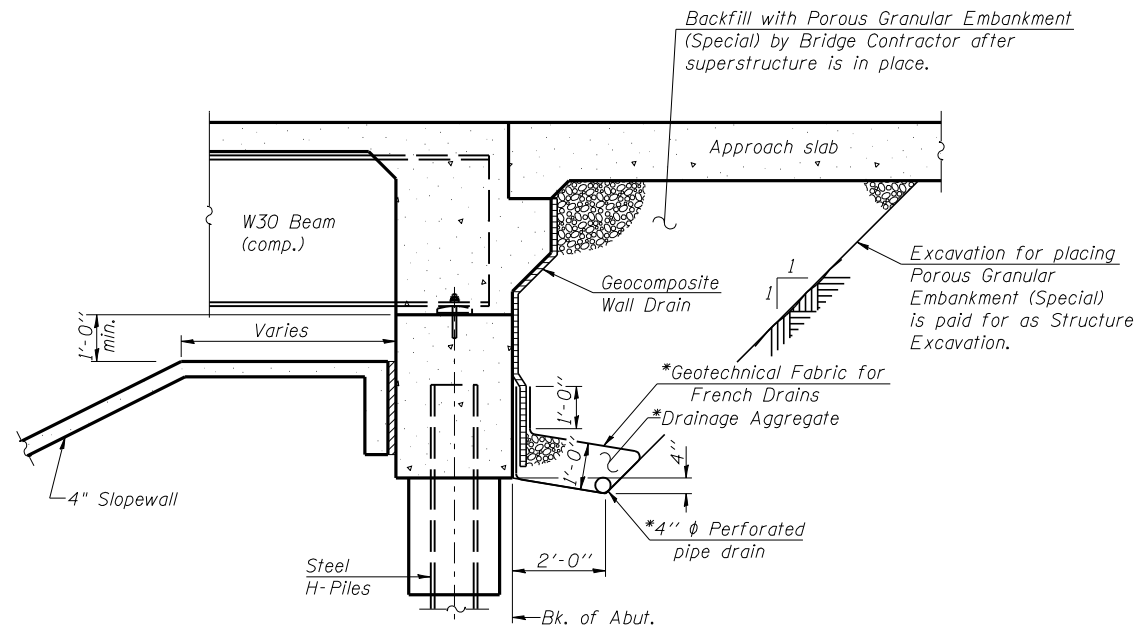
The existing structural steel coating contains lead. The Contractor shall take appropriate precautions to deal with the presence of lead on this project.

The Organic Zinc Rich Primer / Epoxy / Urethane Paint System shall be used for painting of new structural steel except where otherwise noted. The entire system shall be shop applied, with the exception that masked off connection surfaces, field installed fasteners and damaged areas shall be touched up in the field. The color of the final finish coat for all interior steel surfaces shall be Gray, Munsell No. 5B 7/1. The color of the final finish coat for the exterior and bottom flange of the fascia beams shall be Reddish Brown, Munsell No. 2.5YR 3/4. See Special Provision for "Cleaning and Painting New Metal Structures".

Concrete Sealer shall be applied to the designated areas of the piers.

The embankment configuration shown shall be the minimum that must be placed and compacted prior to construction of the abutments.

Slip forming of the concrete parapet is not allowed.



**SECTION THRU INTEGRAL ABUTMENT**

(Horiz. dim. @ Rt. L's)

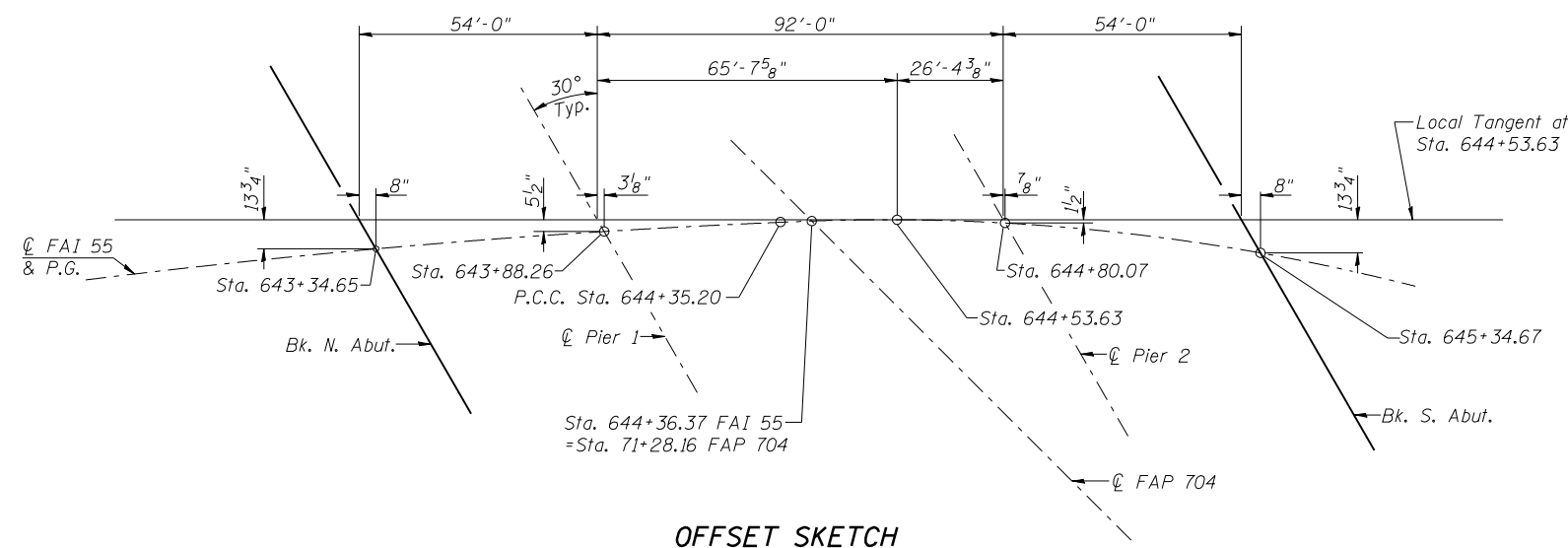
\*Included in the cost of Pipe Underdrains for Structures 4".

Note:

All drainage system components shall extend to 2'-0" from the end of each wingwall except an outlet pipe shall extend until intersecting with the side slopes. The pipes shall drain into concrete headwalls. (See Article 601.05 of the Standard Specifications and Highway Standard 601101).

**TOTAL BILL OF MATERIAL**

ITEM	UNIT	SUPER	SUB	TOTAL
Porous Granular Embankment, Special	Cu. Yd.	-	172	172
Removal of Existing Structures	Each	-	1	1
Protective Shield	Sq. Yd.	210	-	210
Structure Excavation	Cu. Yd.	-	687	687
Concrete Structures	Cu. Yd.	-	293.4	293.4
Concrete Superstructure	Cu. Yd.	462.9	-	462.9
Bridge Deck Grooving	Sq. Yd.	1204	-	1204
Concrete Encasement	Cu. Yd.	-	7.0	7.0
Protective Coat	Sq. Yd.	1466	-	1466
Stud Shear Connectors	Each	5400	-	5400
Reinforcement Bars, Epoxy Coated	Pound	118560	40810	159370
Bar Splicers	Each	879	304	1183
Slope Wall 4 Inch	Sq. Yd.	-	809	809
Furnishing Steel Piles HP12x63	Foot	-	3076	3076
Driving Piles	Foot	-	3076	3076
Test Pile Steel HP12x63	Each	-	4	4
Temporary Sheet Piling	Sq. Ft.	-	884	884
Name Plates	Each	1	-	1
Anchor Bolts, 1"	Each	-	48	48
Concrete Sealer	Sq. Ft.	-	629	629
Geocomposite Wall Drain	Sq. Yd.	-	103	103
Pipe Underdrains for Structures 4"	Foot	-	168	168
Furnishing and Erecting Structural Steel Bridge No. 2	L. Sum	1	-	1
Mechanical Splicers	Each	-	240	240
Drainage Scuppers, DS-11	Each	1	-	1
Diamond Grinding (Bridge Section)	Sq. Yd.	1147	-	1147



**OFFSET SKETCH**

STATION 644+36.37  
BUILT 20 BY  
STATE OF ILLINOIS  
FAI RTE 55 - SEC. (57-7HB-2)BR  
LOADING HL-93  
STRUCTURE NO. 057-0249

**NAME PLATE**  
See Std. 515001

**GENERAL NOTES AND DETAILS**  
**STRUCTURE NO. 057-0249**

	SHEET NO. 2	F.A.I. RTE. 55	SECTION (57-7HB-2)BR	COUNTY MCLEAN	TOTAL SHEETS 153	SHEET NO. 79
	26 SHEETS	CONTRACT NO. 70520			ILLINOIS FED. AID PROJECT	