

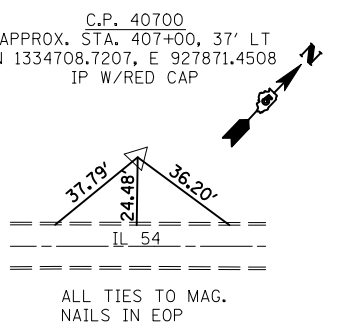
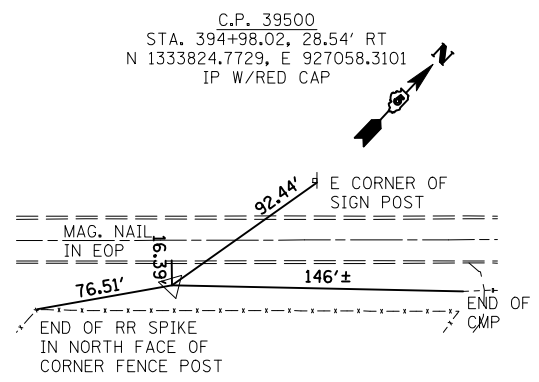
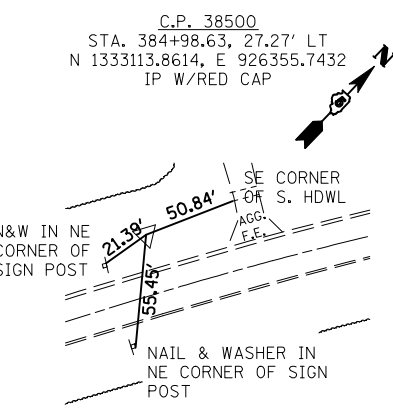
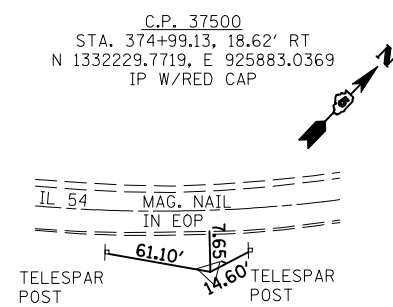
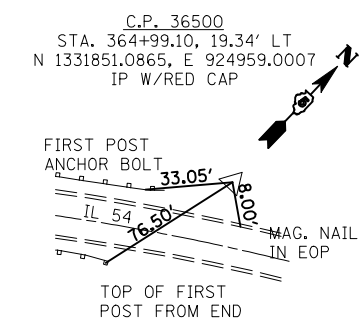
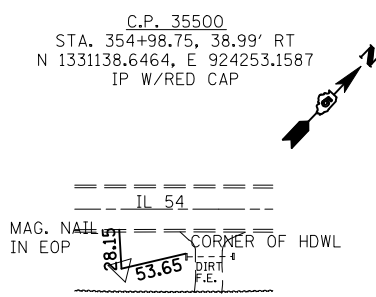
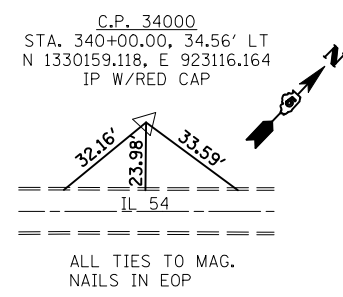
PROP. CURVE TR547-1
 PI STA. = 1+25.17
 Δ = 46° 40' 44" (LT)
 D = 45° 50' 12"
 R = 125.00'
 T = 53.94'
 L = 101.84'
 E = 11.14'
 e = -----
 T.R. = -----
 S.E. RUN = -----
 P.C. STA. = 0+71.24
 P.T. STA. = 1+73.08

EXIST. CURVEMA111C1
 PI STA. = 365+45.65
 Δ = 27° 58' 02" (RT)
 D = 4° 35' 01"
 R = 1,250.00'
 T = 311.28'
 L = 610.15'
 E = 38.18'
 e = -----
 T.R. = -----
 S.E. RUN = -----
 P.C. STA. = 362+34.37
 P.T. STA. = 368+44.52

EXIST. CURVEMA111C2
 PI STA. = 374+11.28
 Δ = 45° 04' 34" (LT)
 D = 7° 38' 22"
 R = 750.00'
 T = 311.24'
 L = 590.04'
 E = 62.02'
 e = -----
 T.R. = -----
 S.E. RUN = -----
 P.C. STA. = 371+00.04
 P.T. STA. = 376+90.08

EXIST. CURVEMA111C3
 PI STA. = 387+84.88
 Δ = 16° 59' 17" (RT)
 D = 2° 51' 53"
 R = 2,000.00'
 T = 298.69'
 L = 593.00'
 E = 22.18'
 e = -----
 T.R. = -----
 S.E. RUN = -----
 P.C. STA. = 384+86.19
 P.T. STA. = 390+79.19

POINT	NORTHING	EASTING
POT 340+00.00	1330134.2078	923140.1149
POT 349+92.21	1330817.8757	923859.1954
PC/POT 362+34.37	1331673.7768	924759.4199
PT 368+44.52	1331971.9029	925284.8447
PC 371+00.04	1332040.5598	925530.9621
PT 376+90.08	1332395.5194	925983.2519
PC 384+86.19	1333089.5299	926373.3007
PT/SE 390+79.19	1333556.1784	926735.6744
POT 397+91.68	1334048.2049	927251.0006
PI 0+00.00	1332614.7493	925749.1212
PC 0+71.24	1332563.1207	925798.2072
PT 1+73.08	1332524.2512	925889.3060
POT 4+74.96	1332525.4779	926191.1885



BM #DS1	CHISELED SQUARE ON SOUTH SIDE OF A CONCRETE RR SIGNAL FOUNDATION AT THE INTERSECTION OF THE ABANDONED RR BED AND THE LIVE ILLINOIS CENTRAL RAIL APPROX. STA. 377+90, 400' LT	EL. 765.87
BM #355	CHISELED SQUARE ON CENTER OF THE SOUTH HEADWALL OF THE 15" CLAY PIPE UNDER THE DIRT F.E. AT APPROX. STA. 355+50, 25' RT	EL. 756.93
BM #363	CHISELED SQUARE ON SOUTH CORNER OF EAST HEADWALL OF 12'X4' CONC. BOX CULVERT AT APPROX. STA. 363+50, 25' RT	EL. 754.03
BM #374	METAL F.P. AT GRADE, SOUTH OF ABANDONED RR BED APPROX. 363' WEST OF IL 54	EL. 759.75
BM #380	CHISELED SQUARE IN TOP CENTER OF WEST HEADWALL OF 24"X18" CONC. BOX CULVERT AT APPROX. STA. 379+93, 30' LT	EL. 759.26
BM #394	RR SPIKE IN SOUTHWEST CORNER F.P. W. SIDE OF F.P. AT APPROX. STA. 394+25, 35' RT	EL. 764.88

NOTE: ALL COORDINATES ARE GROUND COORDINATES