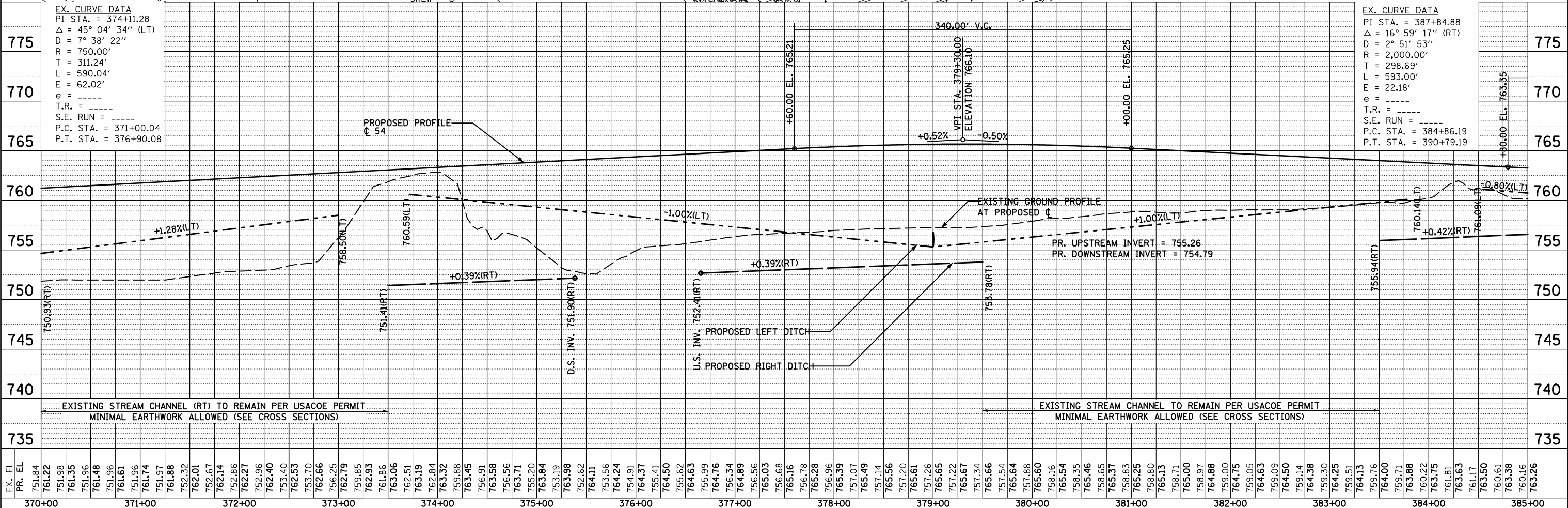
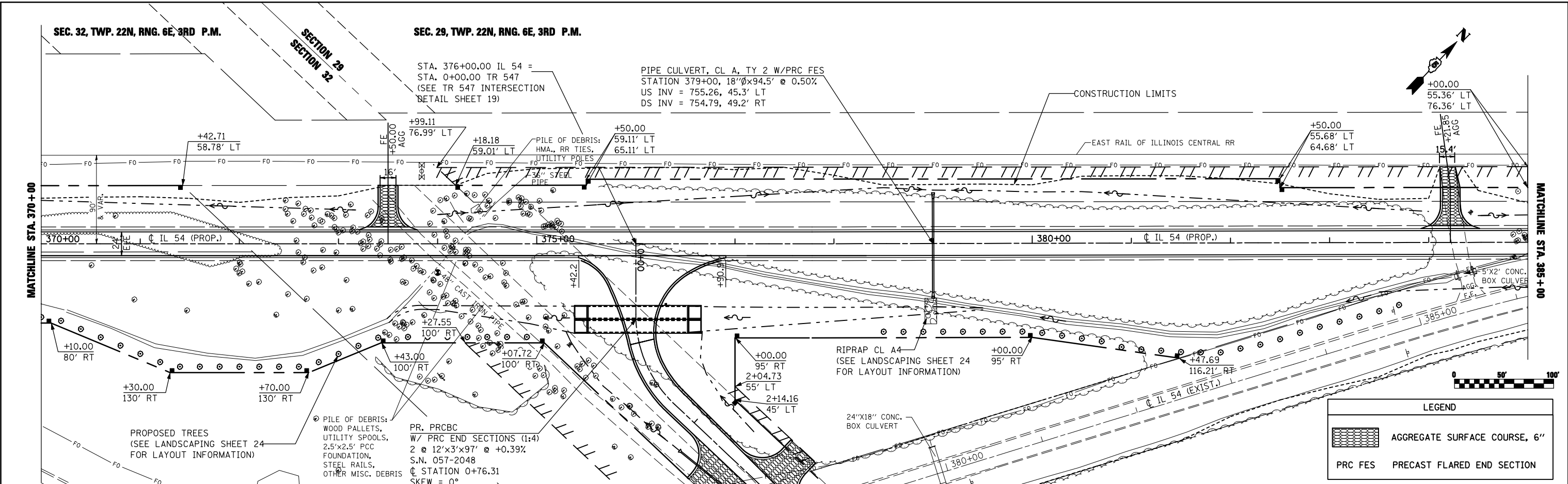


PLAN	SURVEYED	BY	DATE
	PLOTTED		
	CHECKED		
	ALIGNED		
	FILE NAME		
	NO.		

PROFILE	SURVEYED	BY	DATE
	GRADES CHECKED		
	STRUCTURE		
	NOTATIS CHFD		
	NO.		



EX. CURVE DATA  
 PI STA. = 374+11.28  
 $\Delta = 45^\circ 04' 34''$  (LT)  
 $D = 7^\circ 38' 22''$   
 $R = 750.00'$   
 $T = 311.24'$   
 $L = 590.04'$   
 $E = 62.02'$   
 $\theta = \dots$   
 $T.R. = \dots$   
 $S.E. RUN = \dots$   
 $P.C. STA. = 371+00.04$   
 $P.T. STA. = 376+90.08$

EX. CURVE DATA  
 PI STA. = 387+84.88  
 $\Delta = 16^\circ 59' 17''$  (RT)  
 $D = 2^\circ 51' 53''$   
 $R = 2,000.00'$   
 $T = 298.69'$   
 $L = 593.00'$   
 $E = 22.18'$   
 $\theta = \dots$   
 $T.R. = \dots$   
 $S.E. RUN = \dots$   
 $P.C. STA. = 384+86.19$   
 $P.T. STA. = 390+79.19$

FILE NAME =	DESIGNED -	REVISED -	<b>STATE OF ILLINOIS</b> <b>DEPARTMENT OF TRANSPORTATION</b>	<b>PROPOSED PLAN AND PROFILE</b> <b>IL 54</b>	F.A.P. RTE.	SECTION	COUNTY	TOTAL SHEETS	SHEET NO.
USER NAME = keyarb	DRAWN -	REVISED -			71	121R	MCLEAN	87	16
PLOT SCALE = 100.0000' / IN.	CHECKED -	REVISED -			CONTRACT NO. 70592				
PLOT DATE = 10/16/2009	DATE -	REVISED -			ILLINOIS FED. AID PROJECT				