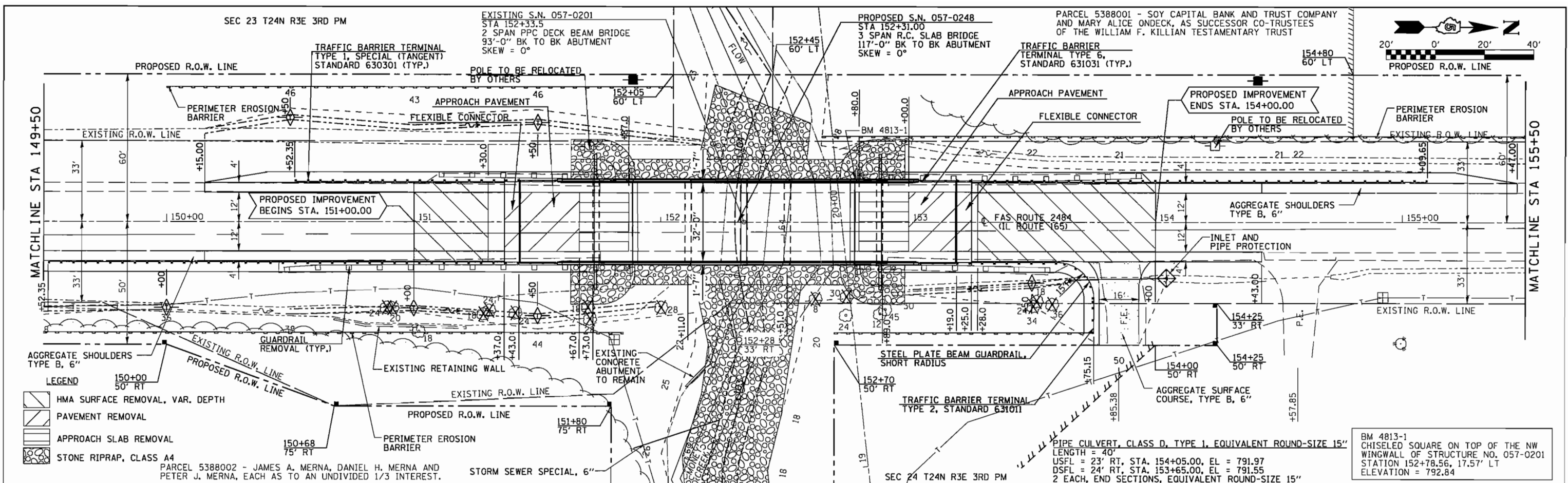


DATE	
BY	
REVISIONS	
NO.	
DATE	
BY	
REVISIONS	
NO.	
DATE	
BY	
REVISIONS	
NO.	

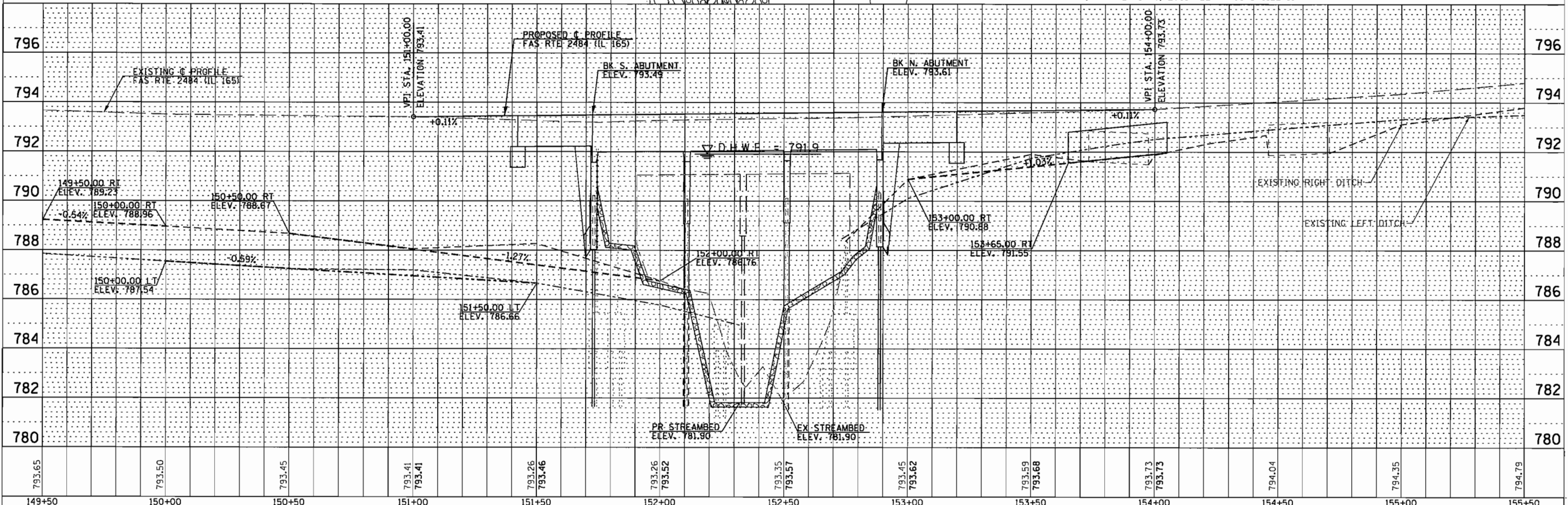
DATE	
BY	
REVISIONS	
NO.	
DATE	
BY	
REVISIONS	
NO.	
DATE	
BY	
REVISIONS	
NO.	



PARCEL 5388002 - JAMES A. MERNA, DANIEL H. MERNA AND PETER J. MERNA, EACH AS TO AN UNDIVIDED 1/3 INTEREST.

PIPE CULVERT, CLASS D, TYPE 1, EQUIVALENT ROUND-SIZE 15"  
 LENGTH = 40'  
 USFL = 23' RT, STA. 154+05.00, EL = 791.97  
 DSFL = 24' RT, STA. 153+65.00, EL = 791.55  
 2 EACH, END SECTIONS, EQUIVALENT ROUND-SIZE 15"

BM 4813-1  
 CHISELED SQUARE ON TOP OF THE NW WINGWALL OF STRUCTURE NO. 057-0201  
 STATION 152+78.56, 17.57' LT  
 ELEVATION = 792.84



FILE NAME =	USER NAME = #USER#	DESIGNED -	REVISED -	STATE OF ILLINOIS DEPARTMENT OF TRANSPORTATION	PLAN & PROFILE	F.A.S. RTE.	SECTION	COUNTY	TOTAL SHEETS	SHEET NO.	
#FILEL#		DRAWN -	REVISED -			2484	1248R-1	MCLEAN	55	10	
		CHECKED -	REVISED -			CONTRACT NO. 70612					
		DATE -	REVISED -			FED. ROAD DIST. NO. [ILLINOIS] FED. AID PROJECT					