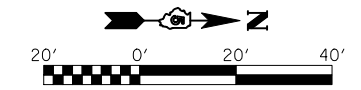
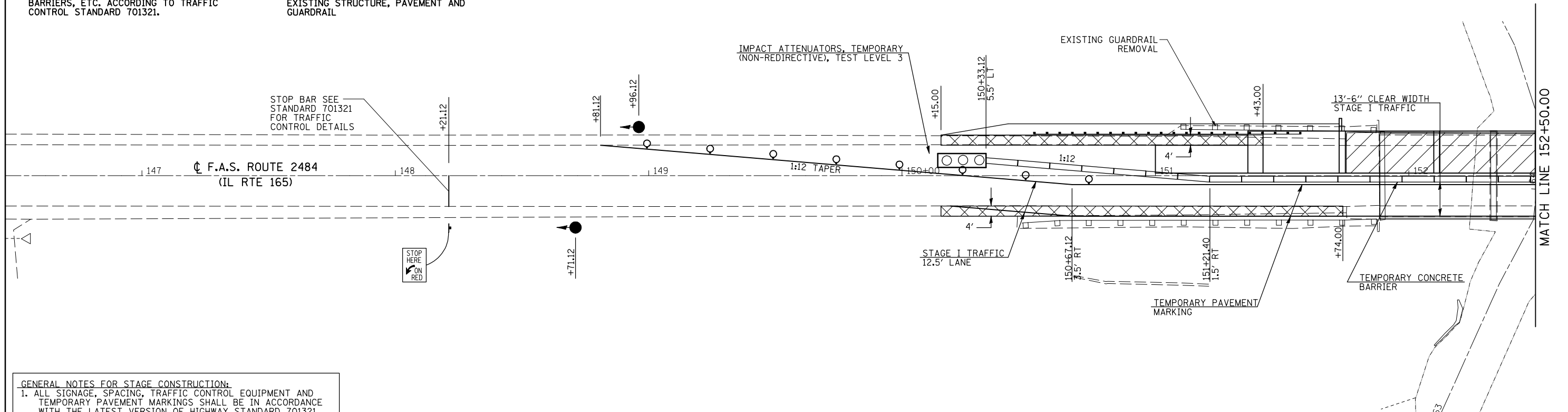


STAGE I TRAFFIC CONTROL



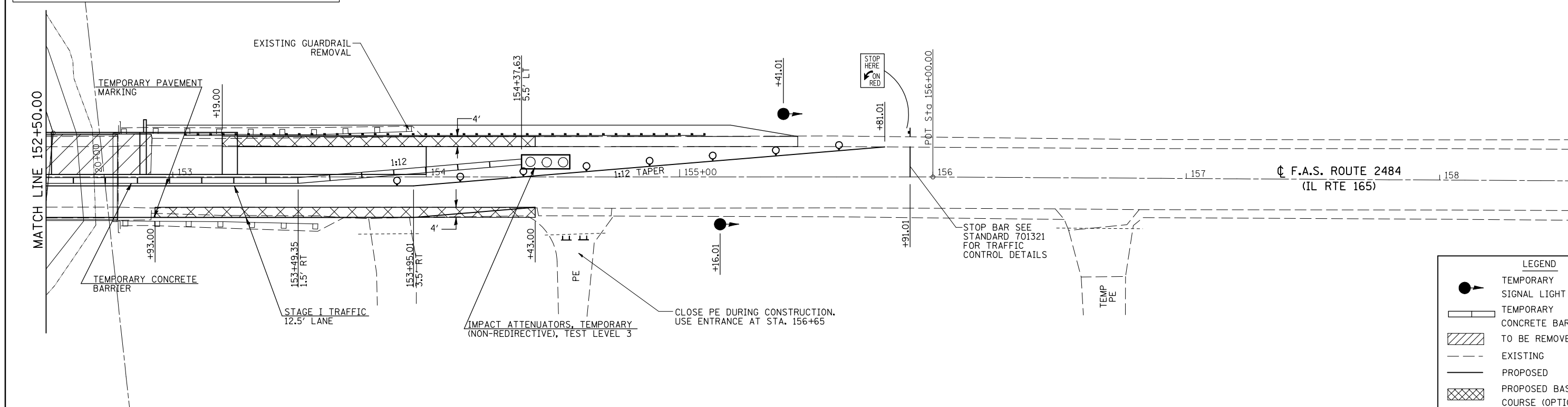
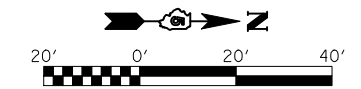
STAGE I NOTES

1. CONSTRUCT BASE COURSE (OPTION) FOR STAGE I AND STAGE II TRAFFIC USING TRAFFIC CONTROL STANDARD 701201.
2. ERECT SIGNS, TRAFFIC SIGNALS, TEMPORARY BARRIERS, ETC. ACCORDING TO TRAFFIC CONTROL STANDARD 701321.
3. PLACE TEMPORARY PAVEMENT MARKING LINE TO ALLOW FOR A 12'-6" TRAFFIC LANE. REMOVE ANY CONFLICTING STRIPING.
4. REMOVE THE STAGE I PORTION OF THE EXISTING STRUCTURE, PAVEMENT AND GUARDRAIL
5. CONSTRUCT THE STAGE I PORTION OF THE NEW BRIDGE AND TEMPORARY RAMPS.



- GENERAL NOTES FOR STAGE CONSTRUCTION:**
1. ALL SIGNAGE, SPACING, TRAFFIC CONTROL EQUIPMENT AND TEMPORARY PAVEMENT MARKINGS SHALL BE IN ACCORDANCE WITH THE LATEST VERSION OF HIGHWAY STANDARD 701321 AND SHALL BE INCLUDED IN THE CONTRACT UNIT PRICE EACH FOR TRAFFIC CONTROL AND PROTECTION STANDARD 701321.
 2. ALL TEMPORARY BRIDGE TRAFFIC SIGNALS FOR CONSTRUCTION WILL BE MEASURED AS 1 (ONE) UNIT.
 3. BARRIER OFFSETS ARE FROM THE CENTER OF THE BARRIER.
 4. SEE BRIDGE PLANS FOR ADDITIONAL DETAILS.
 5. STOP BARS TO BE LOCATED PER STD. 701321.

STAGE I TRAFFIC CONTROL



LEGEND			
	TEMPORARY SIGNAL LIGHT		
	TEMPORARY CONCRETE BARRIER		
	TO BE REMOVED		
	EXISTING		
	PROPOSED		
	PROPOSED BASE COURSE (OPTION)		

FILE NAME =	USER NAME = keysrb	DESIGNED -	REVISED -	STATE OF ILLINOIS DEPARTMENT OF TRANSPORTATION	STAGE I CONSTRUCTION			F.A.S. RTE. 2484	SECTION 124BR-1	COUNTY MCLEAN	TOTAL SHEETS 55	SHEET NO. 13
ct:\pw\work\pwwork\keysrb\0110114\0570612-sh1-staging.dgn		DRAWN -	REVISED -		SCALE: NONE	SHEET NO. 1 OF 2 SHEETS	STA.	TO STA.	CONTRACT NO. 70612			
PLOT SCALE = 39.9471' / IN.		CHECKED -	REVISED -									
PLOT DATE = 8/10/2010		DATE -	REVISED -									