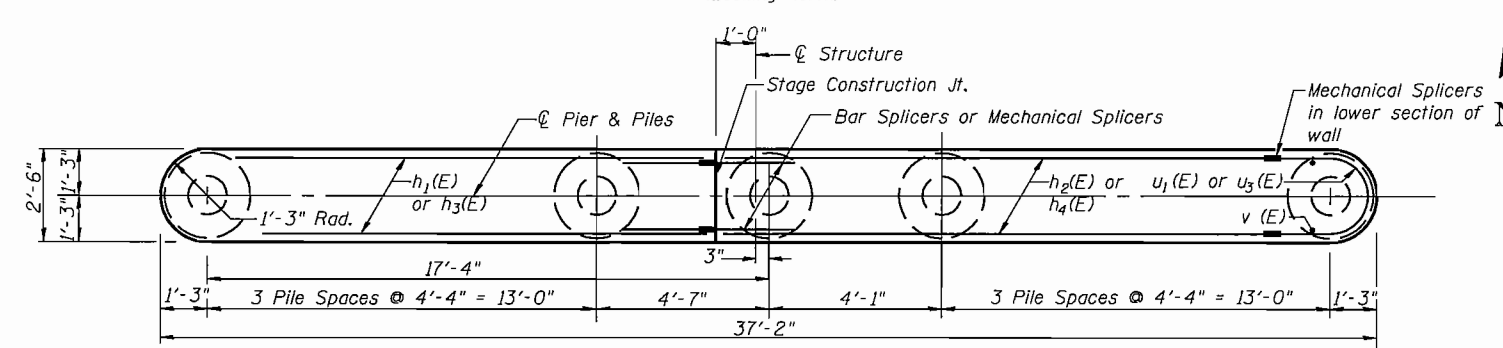
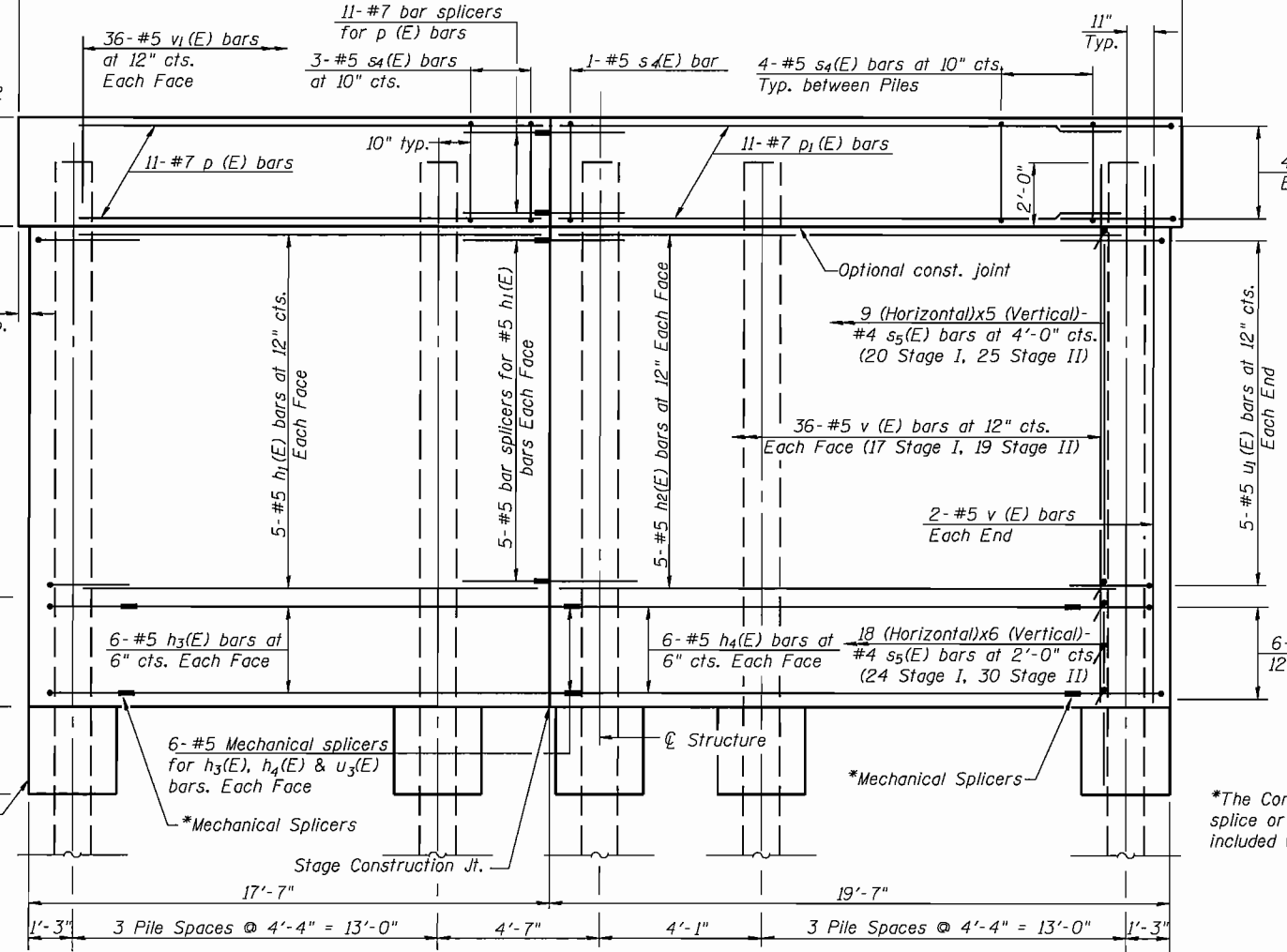
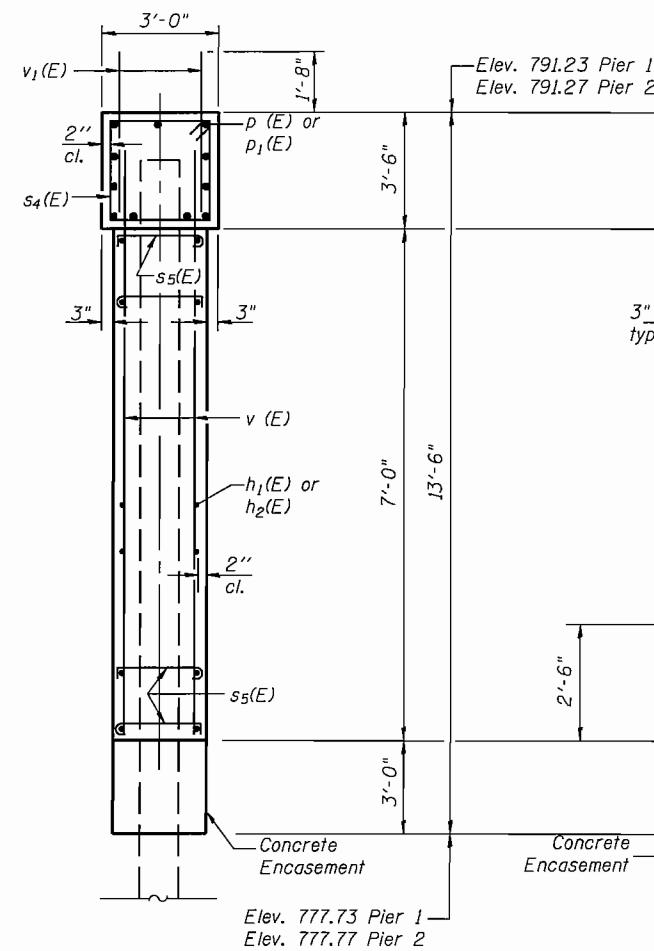
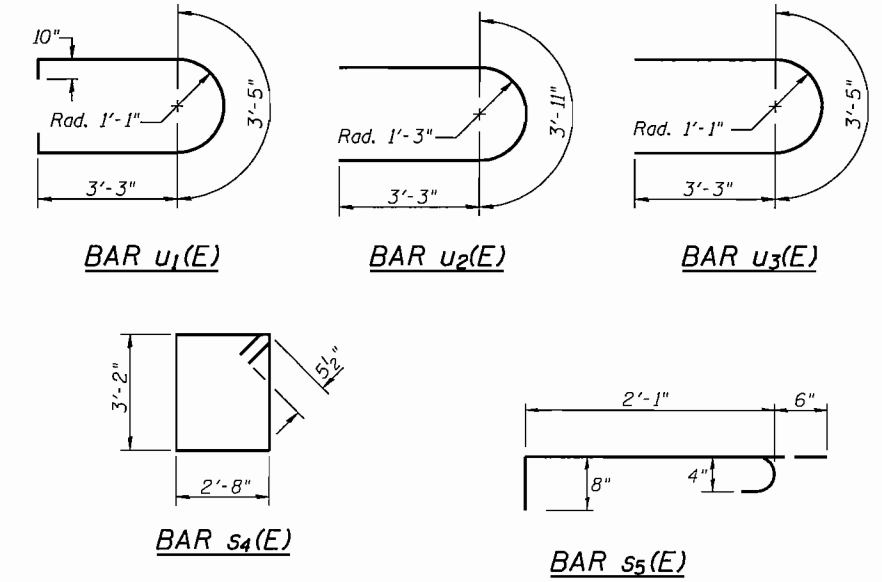
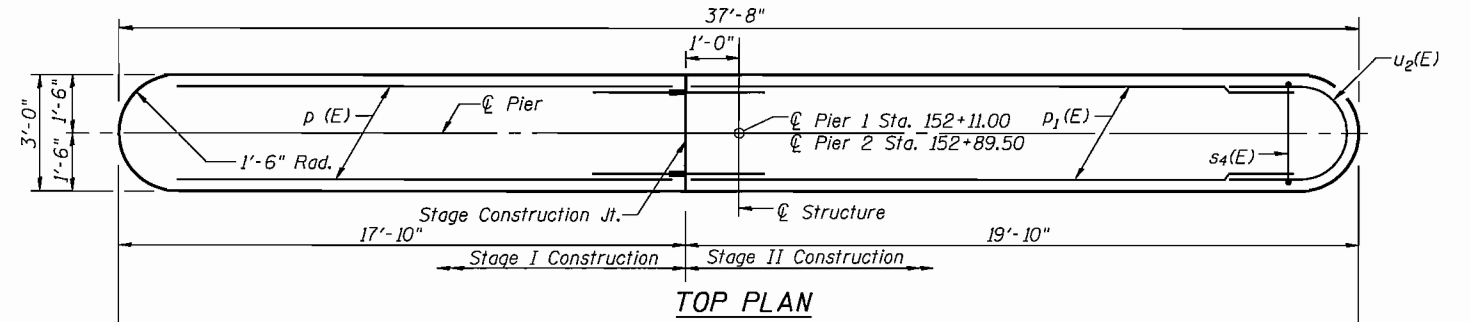


STATE OF ILLINOIS
DEPARTMENT OF TRANSPORTATION

PILE DATA

Type: Metal Shell 14"φ w/ 0.25" walls
Nominal Required Bearing: 416K
Factored Resistance Available: 168K Pier 1, 179K Pier 2
Est. Length: 60'
No. Production Piles: 17
No. Test Piles: 2 (1 Each Pier)



BILL OF MATERIAL
(Two Piers)

Bar	No.	Size	Length	Shape
h ₁ (E)	20	#5	16'-2"	—
h ₂ (E)	20	#5	18'-2"	—
h ₃ (E)	24	#5	14'-2"	—
h ₄ (E)	24	#5	14'-0"	—
p(E)	22	#7	16'-4"	—
p ₁ (E)	22	#7	18'-4"	—
s ₄ (E)	64	#5	12'-7"	□
s ₅ (E)	306	#4	3'-3"	┌┐
u ₁ (E)	20	#5	11'-7"	U
u ₂ (E)	16	#5	10'-5"	U
u ₃ (E)	24	#5	9'-11"	U
v(E)	152	#5	9'-6"	—
v ₁ (E)	144	#5	3'-4"	—
Structure Excavation			Cu. Yd.	123
Concrete Structures			Cu. Yd.	76
Reinforcement Bars, Epoxy Coated			Pound	7,160
Furnishing Metal Shell Piles 14"x0.250"			Foot	1,020
Driving Piles			Foot	1,020
Test Pile Metal Shells			Each	2
Bar Splicers			Each	42
Mechanical Splicers			Each	72
Concrete Encasement			Cu. Yd.	7.2
Underwater Structure Excavation Protection - Location 1			Each	1
Underwater Structure Excavation Protection - Location 2			Each	1

*The Contractor has the option to mechanically splice or to shop weld splice per AWS D1.4. Cost included with Reinforcement Bars, Epoxy Coated.

Notes:
For details of bar splicers, & mechanical splicers, see sheet 11 of 17.
For details of metal shell piles & conc. encasement see sheet 10 of 17.

Note:
If a portion of the pier wall or concrete encasement is under water, reinforcement may be placed underwater into forms. Concrete shall be tremied according to Article 503.08 of the Standard Specifications to an elevation of 1'-0" above the water line at the time of construction.

PIERS
STRUCTURE NO. 057-0248

DESIGNED	PBB/SAL	200
CHECKED	-	
DRAWN	MLO	
CHECKED	-	
EXAMINED	-	
PASSED	-	

SHEET NO. 9 17 SHEETS	F.A.S. RTE. 2484	SECTION 124BR-1	COUNTY MCLEAN	TOTAL SHEETS 55	SHEET NO. 33
	CONTRACT NO. 70612				
FED. ROAD DIST. NO.		ILLINOIS FED. AID PROJECT			