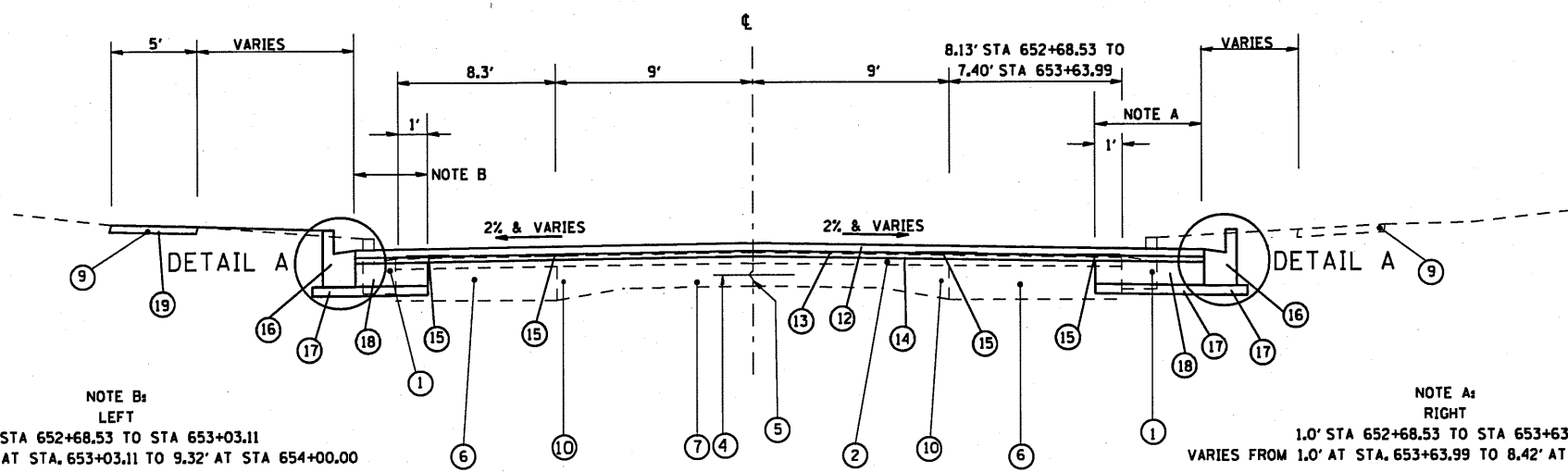


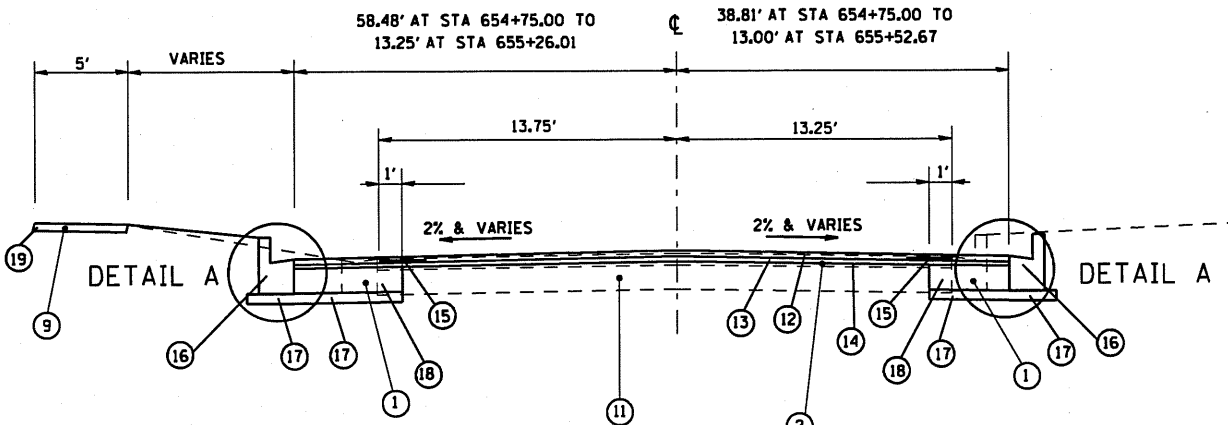
F.A.P. RTE.	SECTION	COUNTY	TOTAL SHEETS	SHEET NO.
315	(28)N,TS	HANCOCK	78	18
FED. ROAD DIST. NO.		ILLINOIS	FED. AID PROJECT	



NOTE B:  
LEFT  
1.0' STA 652+68.53 TO STA 653+03.11  
VARIES FROM 1.0' AT STA. 653+03.11 TO 9.32' AT STA 654+00.00

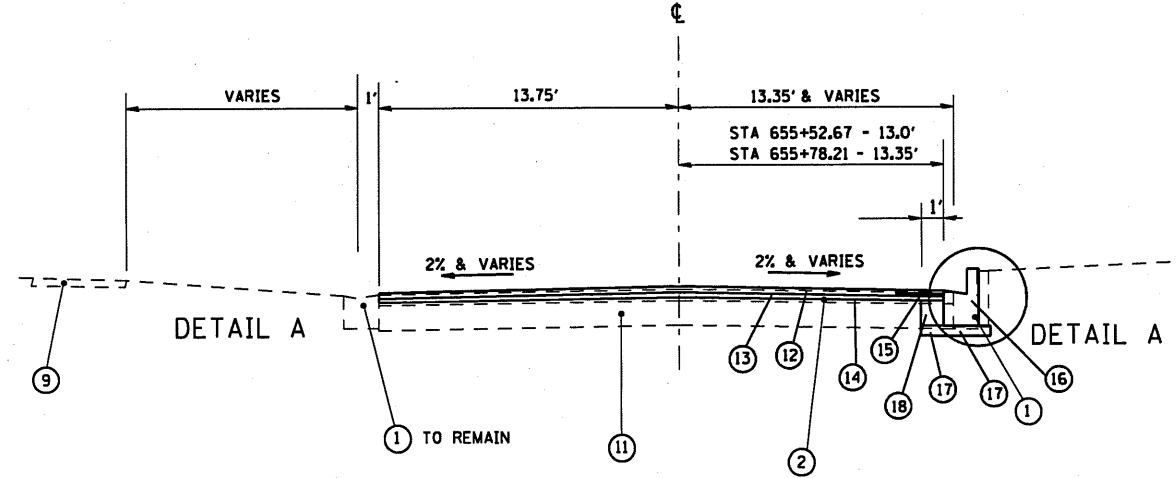
NOTE A:  
RIGHT  
1.0' STA 652+68.53 TO STA 653+63.99  
VARIES FROM 1.0' AT STA. 653+63.99 TO 8.42' AT STA 654+00.00

TYPICAL SECTION FAP 514 (MADISON STREET)  
STA. 652+68.53 TO STA. 654+00.00 - LEFT  
STA. 652+68.53 TO STA. 654+00.00 - RIGHT



TYPICAL SECTION FAP 514 (MADISON STREET)  
STA. 654+75.00 TO STA. 655+26.01 - LEFT  
STA. 654+75.00 TO STA. 655+52.67 - RIGHT

OMISSION - STA. 654+00.00 TO 654+75.00  
SEE FAP 315 (US 136/BUCHANAN STREET) TYPICAL SECTION



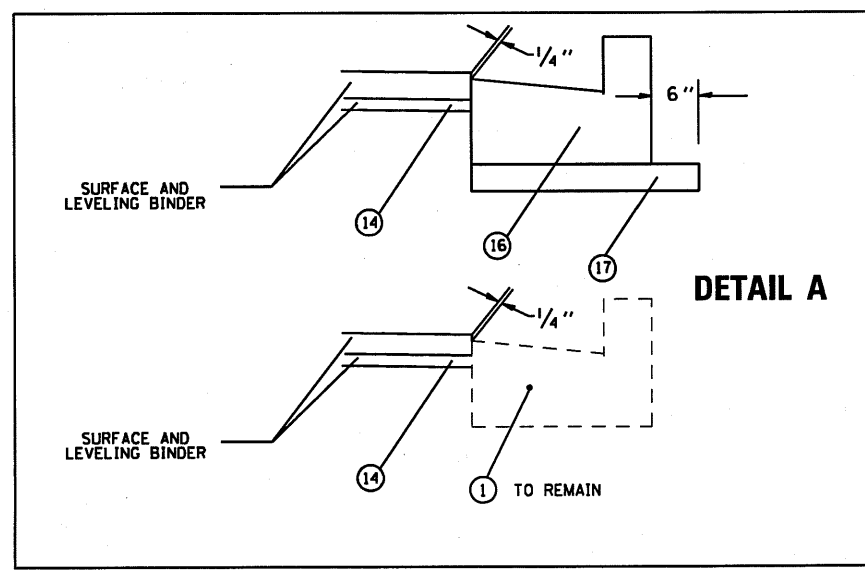
TYPICAL SECTION FAP 514 (MADISON STREET)  
STA. 655+26.01 TO STA. 655+78.21 - LEFT  
STA. 655+52.67 TO STA. 655+78.21 - RIGHT

EXISTING

- ① TYPE B-6.12 CONCRETE CURB & GUTTER
- ② BITUMINOUS CONCRETE OVERLAY
- ③ P.C.C. BASE COURSE WIDENING (8")
- ④ 1/2" Ø DEFORMED BAR
- ⑤ LONGITUDINAL JOINT
- ⑥ BIT. CONCRETE BASE COURSE WIDENING (9")
- ⑦ P.C.C. PAVEMENT (9-6-9)
- ⑧ GRANULAR SUBGRADE
- ⑨ 4" P.C.C. SIDEWALK
- ⑩ 3/4" Ø SMOOTH BAR
- ⑪ P.C.C. PAVEMENT

PROPOSED

- ⑫ BITUMINOUS CONCRETE SURFACE COURSE, SUPERPAVE, MIX "D", N70 - 1 1/2" AVE
- ⑬ LEVELING BINDER (MACHINE METHOD), SUPERPAVE, N70 - 1" AVE
- ⑭ BITUMINOUS SURFACE REMOVAL (VARIABLE DEPTH) - 2" TO 2 1/4" AVE
- ⑮ STRIP REFLECTIVE CRACK CONTROL TREATMENT
- ⑯ TYPE B-6.12 CONCRETE CURB & GUTTER
- ⑰ SUB-BASE GRANULAR MATERIAL, TYPE B - 4 INCH
- ⑱ P.C.C. BASE COURSE WIDENING - 10 INCH
- ⑲ P.C.C. SIDEWALK - 4 INCH



REVISIONS	
NAME	DATE

ILLINOIS DEPARTMENT OF TRANSPORTATION  
TYPICAL SECTIONS  
SHEET 2 OF 2  
FAP 315 (US 136) AND  
FAP 514 (IL 94)  
SECTION (28)N,TS  
HANCOCK COUNTY  
VERT. SCALE: NONE  
HORIZ. SCALE: NONE  
DATE: MAY, 2010  
DRAWN BY: DJK  
CHECKED BY: DBS

c:\pwwork\pwwork\loughlin\1\08238618\05-TYPICAL 5.dgn  
 Oct-06-2010 09:10:41 AM  
 REF:01