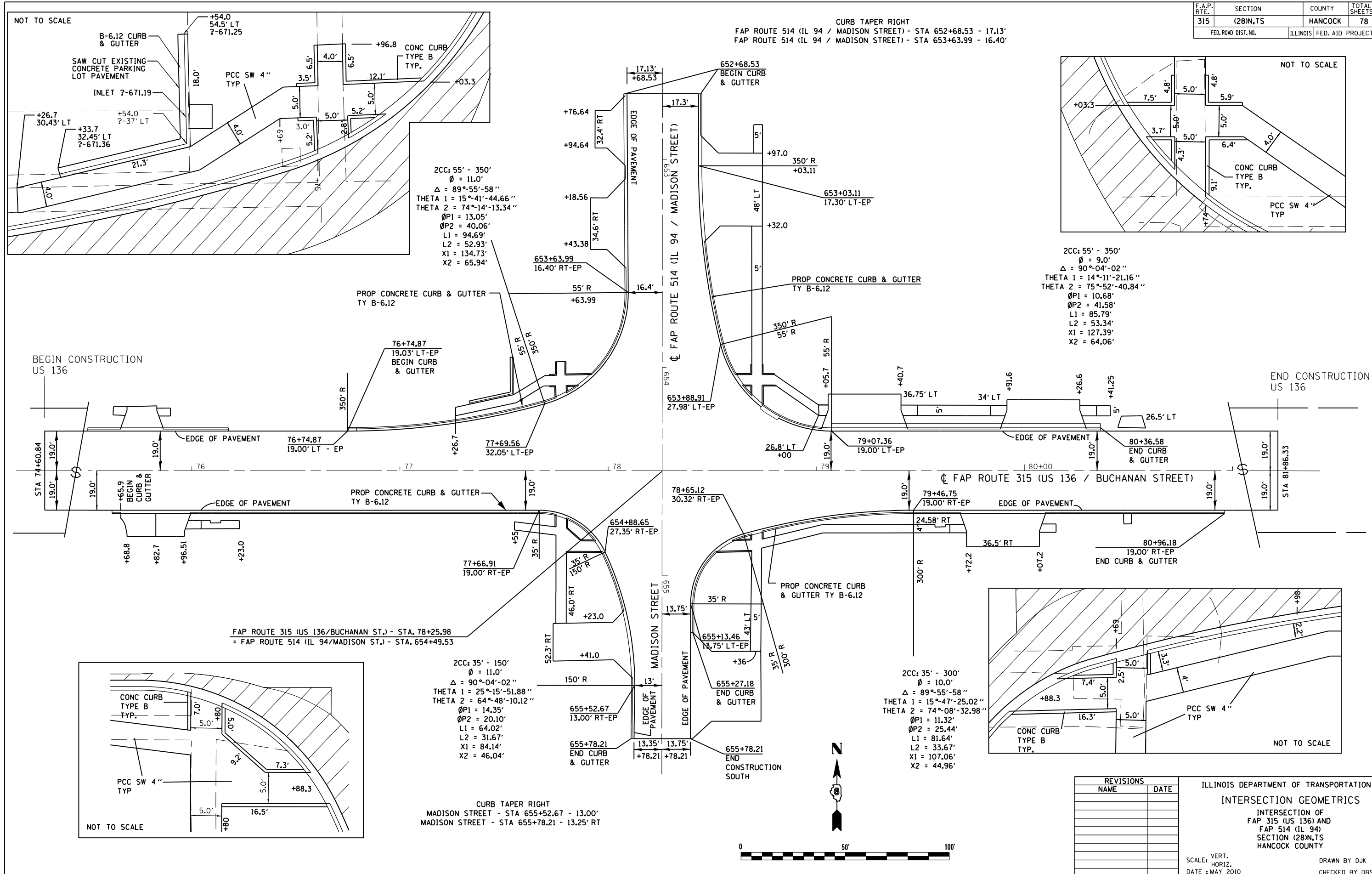


F.A.P. RTE.	SECTION	COUNTY	TOTAL SHEETS	SHEET NO.
315	(28)N.TS	HANCOCK	78	24
FED. ROAD DIST. NO.		ILLINOIS	FED. AID PROJECT	



REVISIONS	
NAME	DATE

ILLINOIS DEPARTMENT OF TRANSPORTATION
INTERSECTION GEOMETRICS
 INTERSECTION OF
 FAP 315 (US 136) AND
 FAP 514 (IL 94)
 SECTION (28)N.TS
 HANCOCK COUNTY

VERT. SCALE: 1" = 10'
 HORIZ. SCALE: 1" = 50'
 DATE: MAY 2010

DRAWN BY DJK
 CHECKED BY DBS