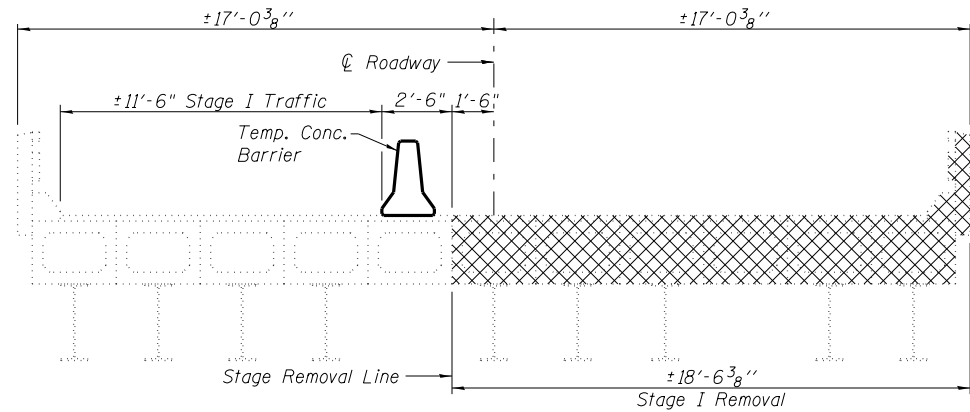
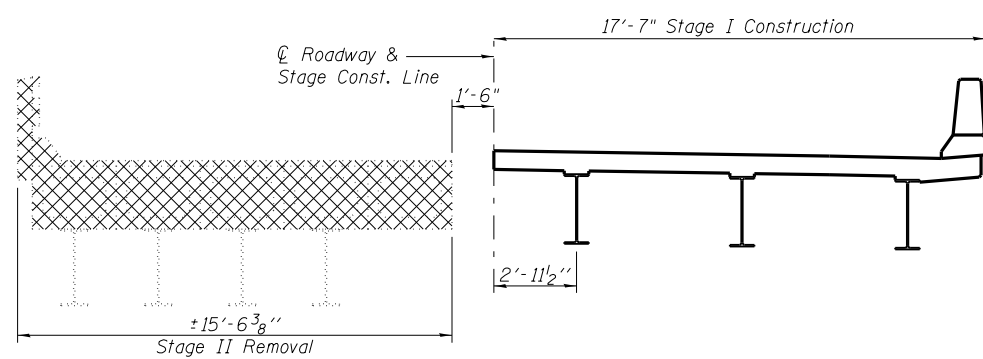


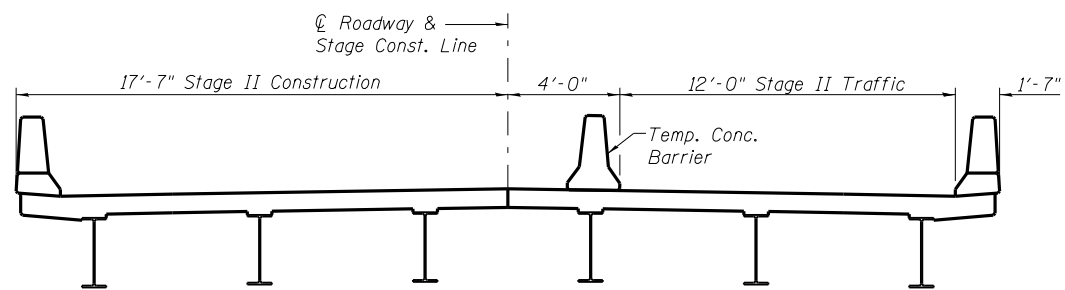
STATE OF ILLINOIS
DEPARTMENT OF TRANSPORTATION



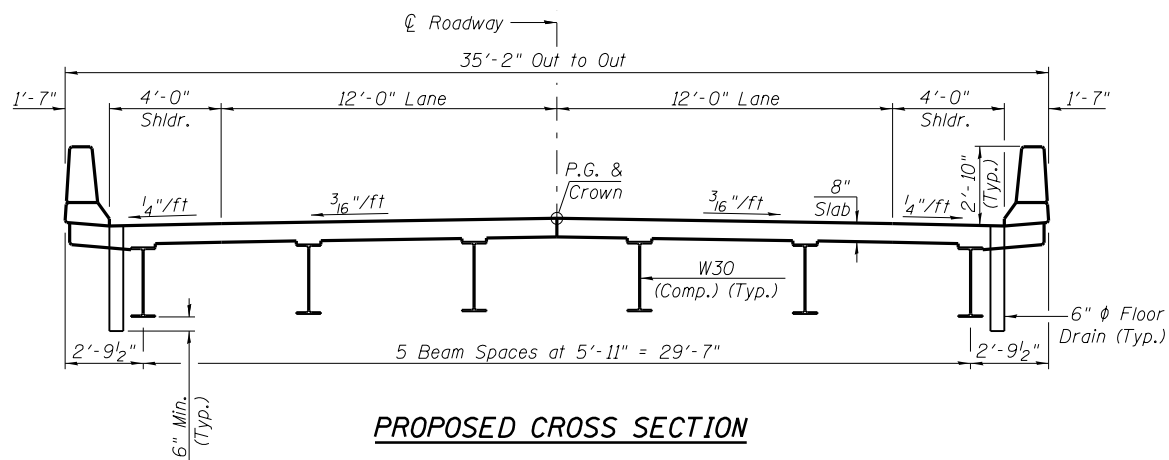
STAGE I REMOVAL & TRAFFIC



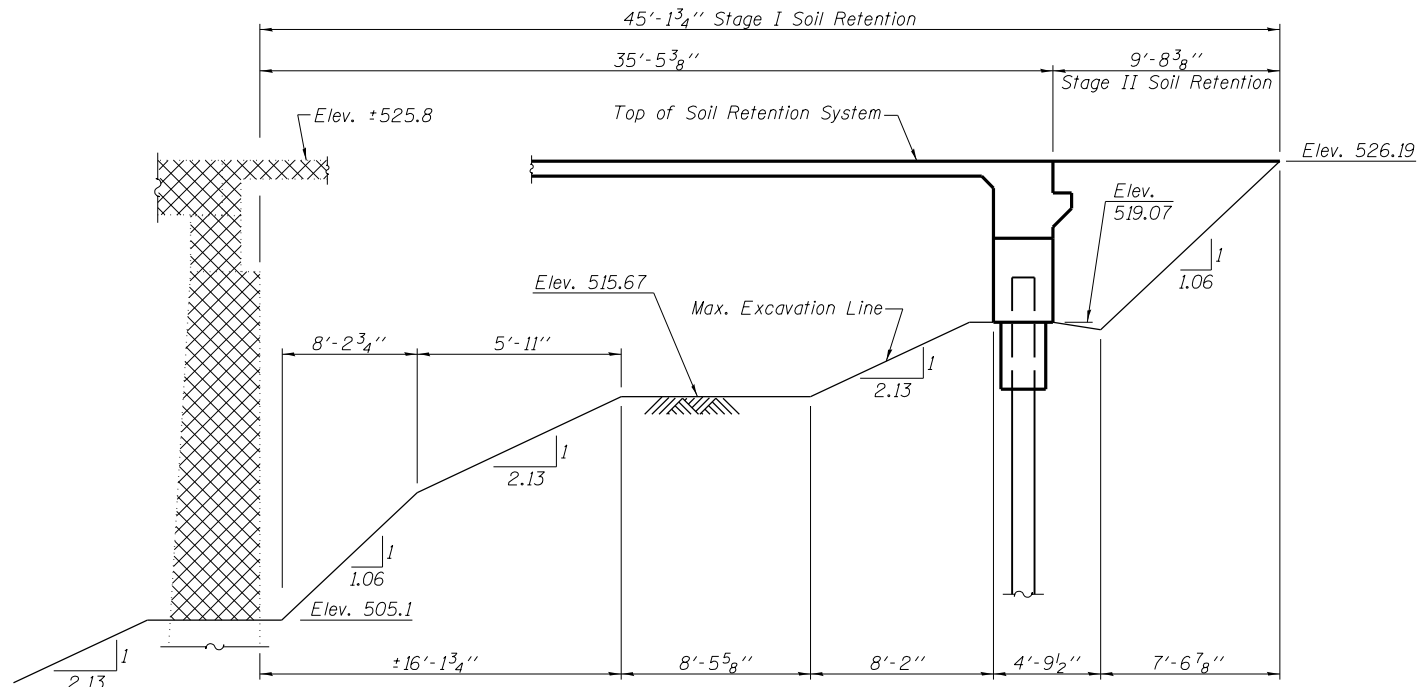
STAGE I CONSTRUCTION & STAGE II REMOVAL



STAGE II CONSTRUCTION & TRAFFIC

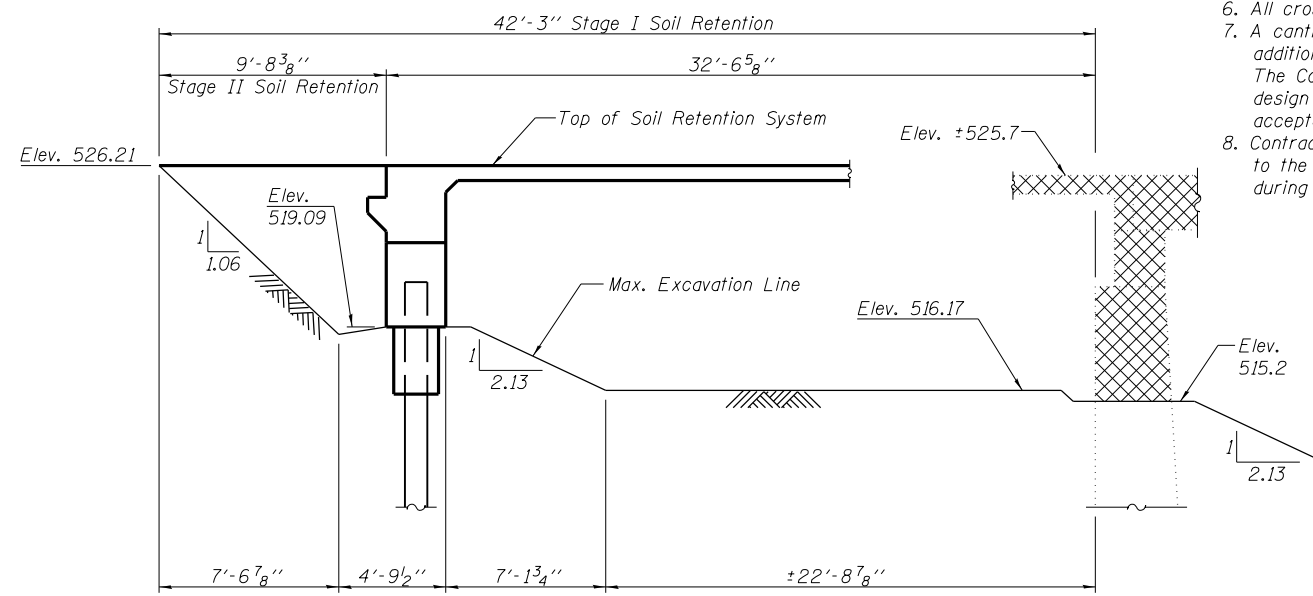


PROPOSED CROSS SECTION



TEMPORARY SOIL RETENTION SYSTEM AT SOUTH ABUTMENT

(Dimensions Taken Along Stage Construction Line)



TEMPORARY SOIL RETENTION SYSTEM AT NORTH ABUTMENT

(Dimensions Taken Along Stage Construction Line)

- Notes:
1. Cross Hatched areas indicate removal of existing structure.
 2. Location of Stage Construction lines is also applicable to substructure.
 3. See roadway plans for quantity of Temporary Concrete Barrier.
 4. See sheet 4 of 24 for details of Temporary Concrete Barrier.
 5. Removal of existing bridge railing, bituminous wearing surface, precast concrete bridge approach beams, and steel for shoring beams is included with Removal of Existing Structures.
 6. All cross sections are Looking South.
 7. A cantilevered sheet piling design does not appear feasible and additional members or other retention systems may be necessary. The Contractor shall submit a temporary soil retention system design including plan details and calculations for review and acceptance by the Engineer.
 8. Contractor shall take precaution to not expose piles adjacent to the stage removal line under the portion of pier to remain during stage I removal procedure.

**STAGE CONSTRUCTION DETAILS
STRUCTURE NO. 059-0512**

<p>LIN ENGINEERING, LTD. Consulting Engineers Chatham, Illinois</p>	SHEET NO. 3	F.A.P. RTE. 608	SECTION 122B-2	COUNTY MACOUPIN	TOTAL SHEETS 53	SHEET NO. 21
	24 SHEETS	CONTRACT NO. 72B53				
ILLINOIS FED. AID PROJECT						