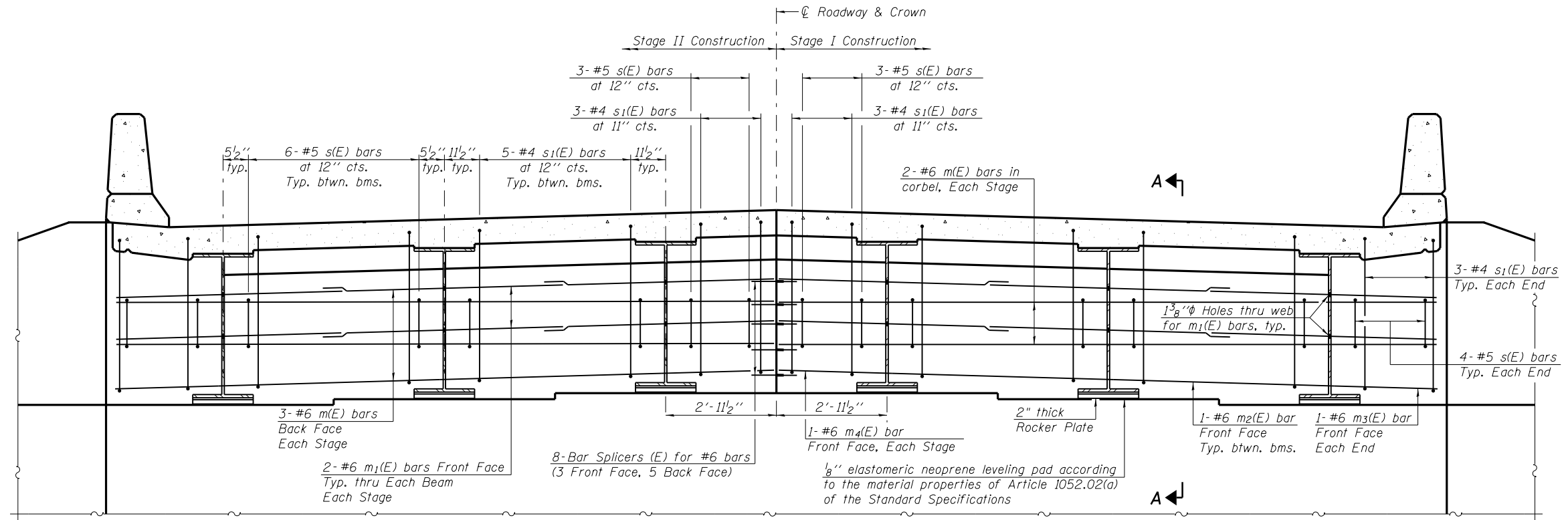


STATE OF ILLINOIS
DEPARTMENT OF TRANSPORTATION

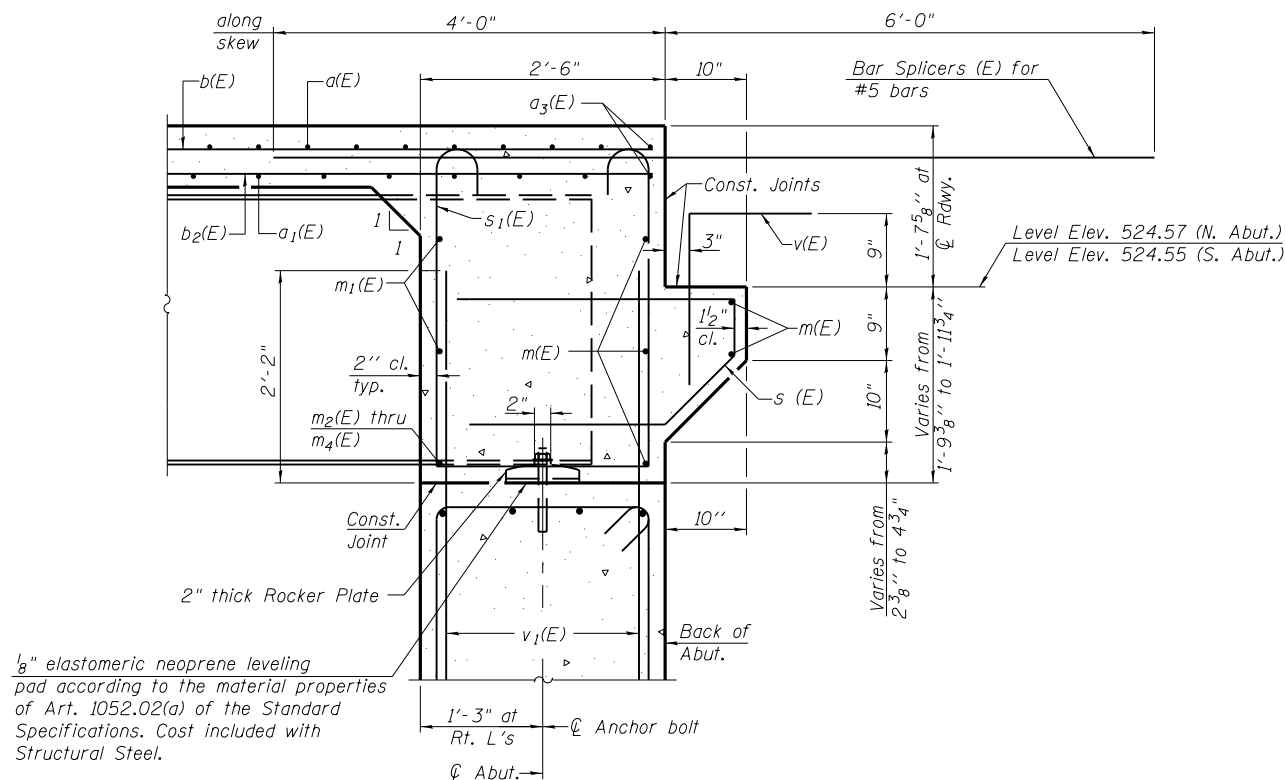


DIAPHRAGM ELEVATION AT SOUTH ABUTMENT

(Looking South)
(All Horizontal Dimensions at Right Angles to \varnothing Roadway)
(North Abutment Mirrored About \varnothing Roadway)

Notes:

Reinforcement bars in diaphragm are billed with superstructure on sheet 9 of 24.
Concrete in diaphragm is included with Concrete Superstructure on sheet 9 of 24.
For details of bars s(E) & s₁(E) see sheet 9 of 24.
The s(E) and s₁(E) bars shall be placed parallel to the beams. Spacing for these bars shall be at right angles to the beams.
For location of holes thru web, see sheet 14 of 24.




SECTION A-A

(Dimensions at right angles to abutment, except as shown.)

MIN. BAR LAP
#6 bar = 3'-4"

**CONCRETE END DIAPHRAGMS
STRUCTURE NO. 059-0512**

 LIN ENGINEERING, LTD. Consulting Engineers Chatham, Illinois <small>Designed By: RH Checked By: MTH Drawn By: RH Date: Feb. 2010 File: 059-0512.dgn</small>	SHEET NO. 11	F.A.P. RTE.	SECTION	COUNTY	TOTAL SHEETS	SHEET NO.
	24 SHEETS	608	122B-2	MACOUPIN	53	29
CONTRACT NO. 72B53						
ILLINOIS FED. AID PROJECT						