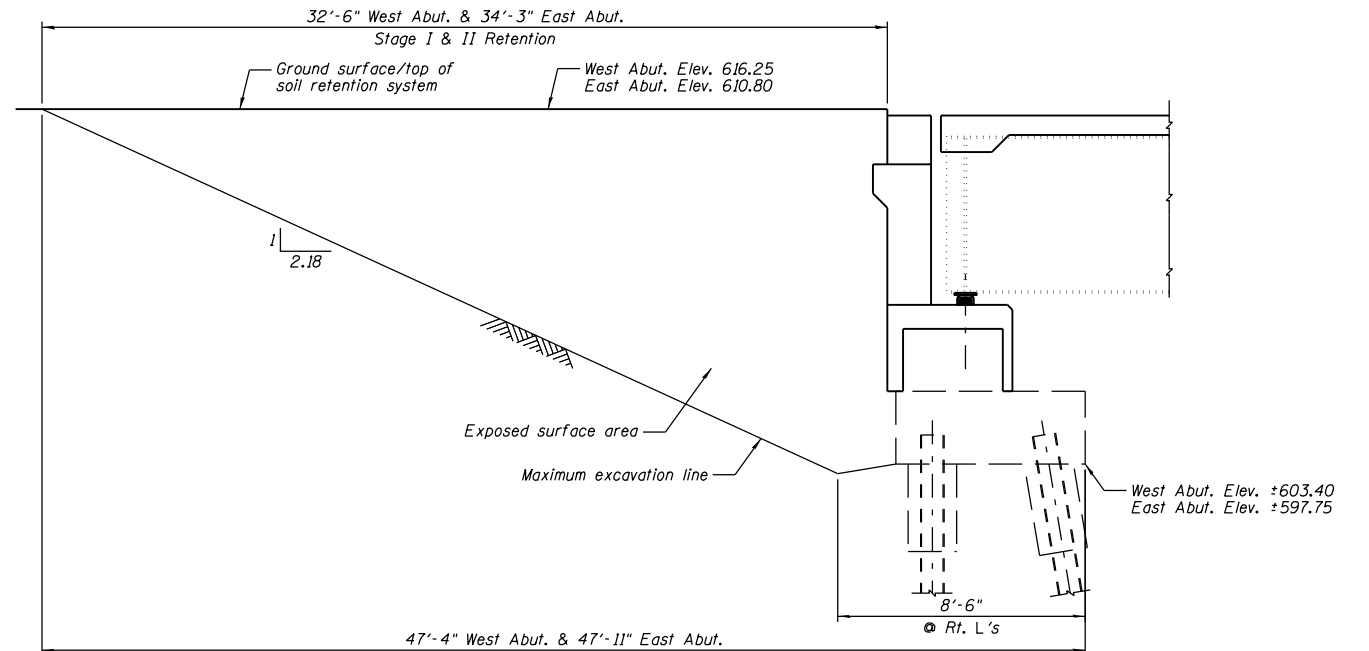
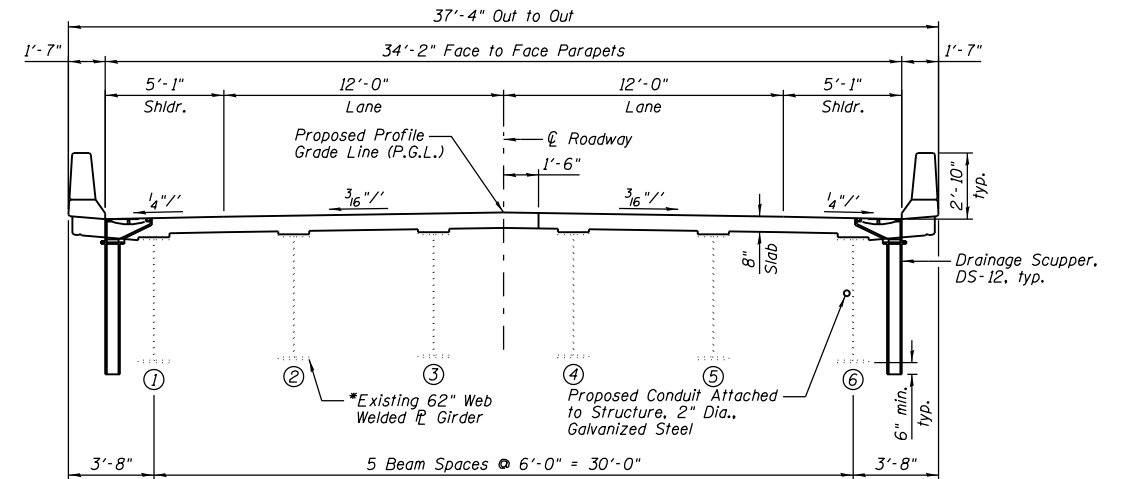
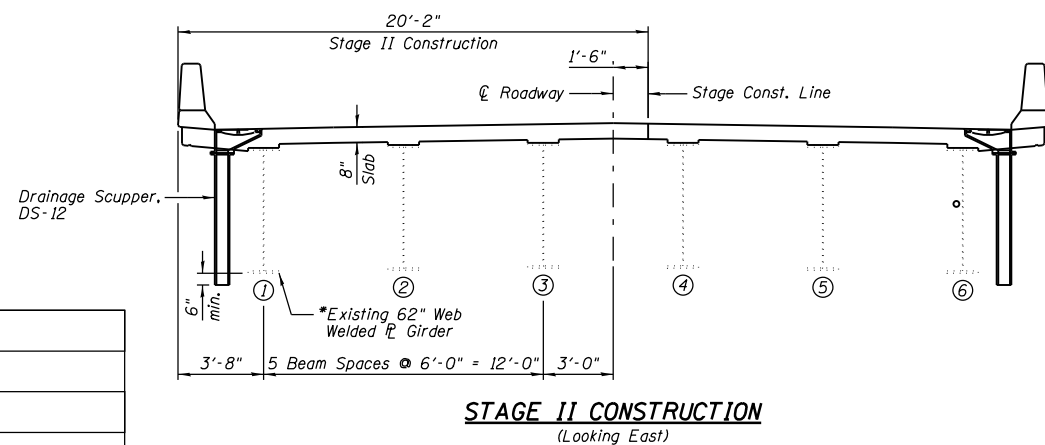
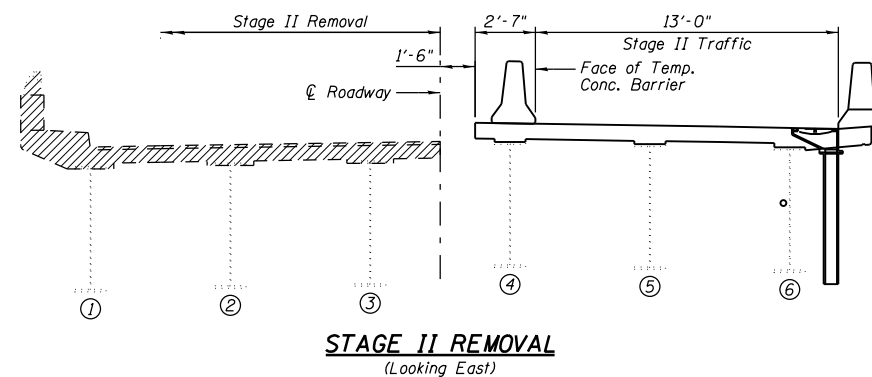
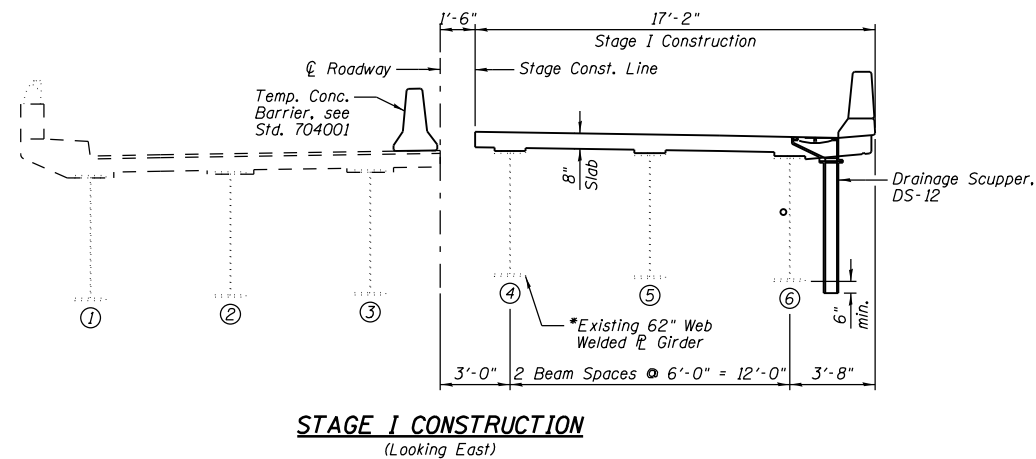
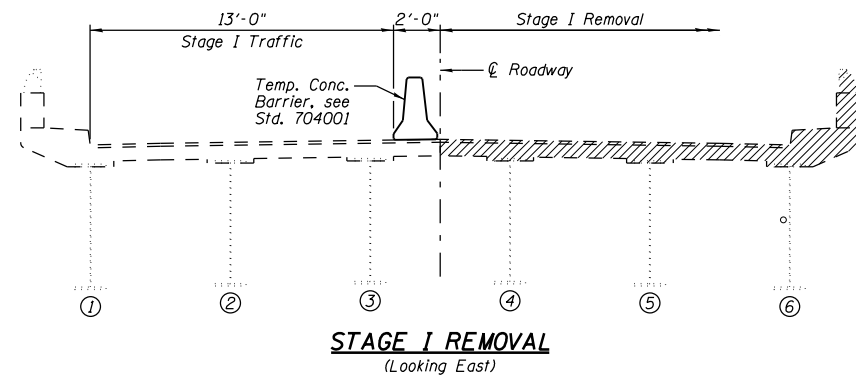


STATE OF ILLINOIS  
DEPARTMENT OF TRANSPORTATION



**NOTES:**

- 1.) A cantilever sheet piling design does not appear feasible and additional members or other retention systems may be necessary. The Contractor shall submit a temporary soil retention system design including plan details and calculations for review and acceptance by the Engineer.
- 2.) All dimensions are along roadway unless otherwise noted.

**BILL OF MATERIAL**

| Item                            | Unit    | Total |
|---------------------------------|---------|-------|
| Temporary Soil Retention System | Sq. Ft. | 500   |

**NOTES:**

- 1.) \*Composite in positive moment region only.
- 2.) Hatched area indicates Removal of Existing Concrete Deck. Removal of existing bituminous wearing surface and removal of bridge handrail shall be included with Removal of Existing Concrete Deck.
- 3.) See Sheet B4 for Temporary Concrete Barrier (Standard 704001). See roadway plans for quantities.

**STAGE CONSTRUCTION  
STRUCTURE NO. 084-0078**

|          |         |
|----------|---------|
| DESIGNED | JML     |
| CHECKED  | MSW     |
| DRAWN    | DJM     |
| CHECKED  | MGO/MSW |

DATE 08/09/10

FARNSWORTH GROUP, INC.

**STAGE II CONSTRUCTION**  
(Looking East)

CONSULTING ENGINEERS - 2709 MCGRAW DRIVE BLOOMINGTON, ILLINOIS 61704 (309) 663-8435 / (309) 663-1571 FAX

|                       |             |              |                    |              |           |
|-----------------------|-------------|--------------|--------------------|--------------|-----------|
| SHEET NO. B3          | F.A.I. RTE. | SECTION      | COUNTY             | TOTAL SHEETS | SHEET NO. |
|                       | 72          | (84-3HB-5)BR | SANGAMON           | 84           | 39        |
| 42 SHEETS             | SN 084-0078 |              | CONTRACT NO. 72C70 |              |           |
| FED. ROAD DIST. NO. 6 |             | ILLINOIS     | FED. AID PROJECT   |              |           |