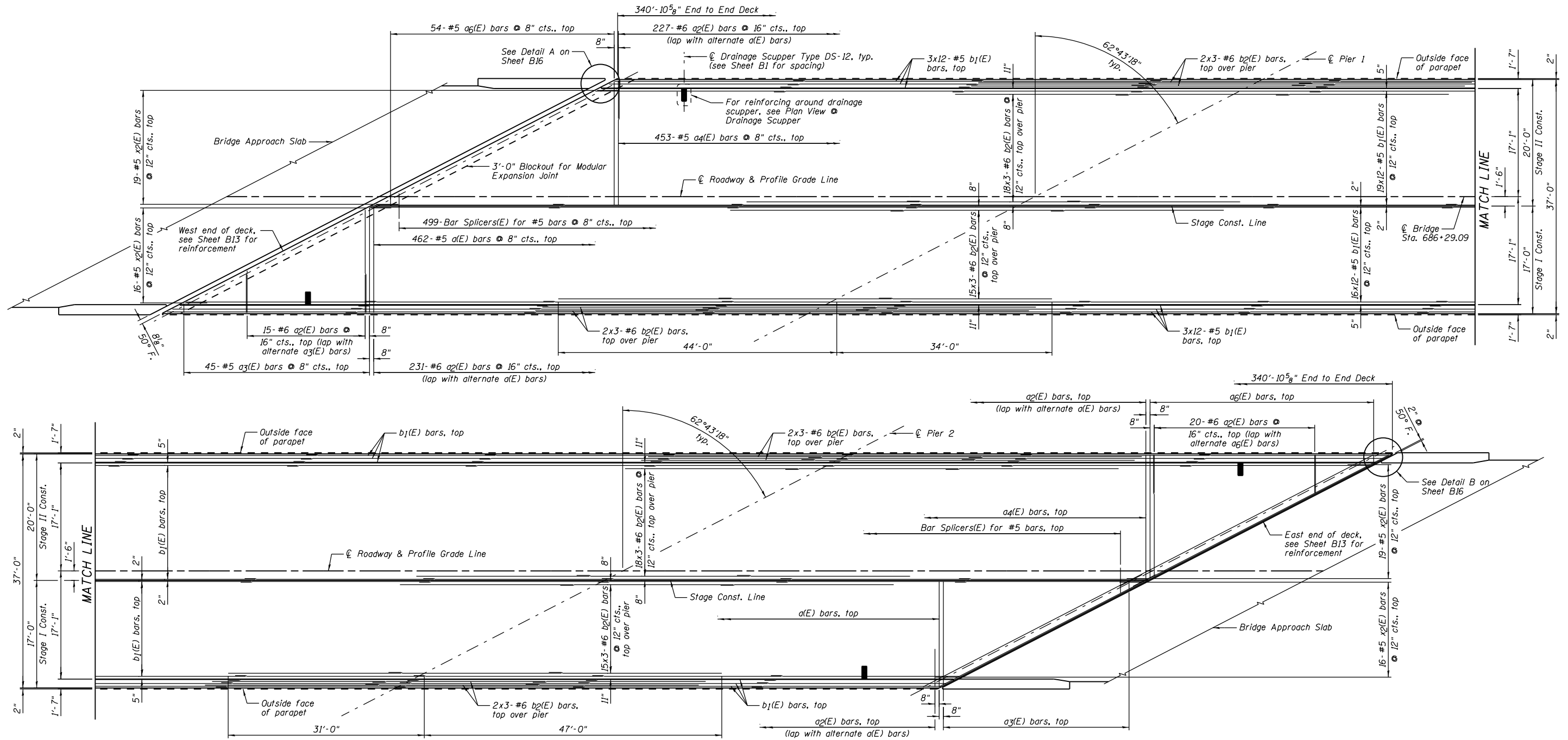
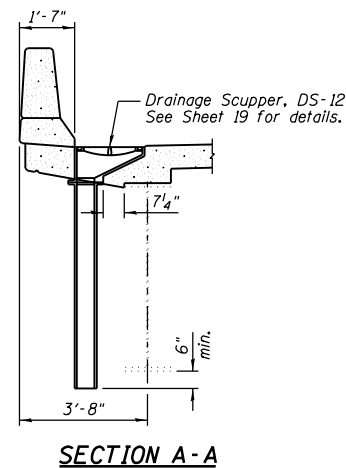
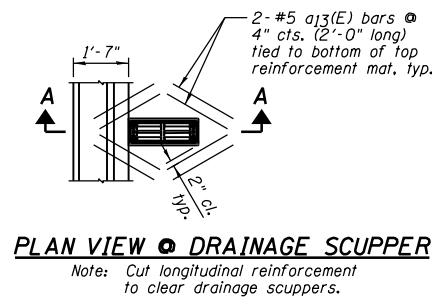


STATE OF ILLINOIS  
DEPARTMENT OF TRANSPORTATION



TOP OF DECK REINFORCEMENT PLAN



NOTE:

- 1) See Sheet B13 for end of deck reinforcement.
- 2) See Sheet B14 for Deck Cross Section.
- 3) See Sheet B16 for Superstructure Details and Bill of Material.
- 4) Order a3(E) bars and a6(E) bars full length. Cut according to Bar Cutting Diagram on Sheet B16. Use remainder of a3(E) bars and a6(E) bars on East end of deck.
- 5) Bars indicated thus 16x12-#5 etc. indicates 16 lines of bars with 12 lengths per line.
- 6) Space drainage scuppers to miss stud shear connectors and transverse reinforcing bars.
- 7) See Sheet B41 for Bar Splicer Details.

BAR LAP	
#5	2'-7"
#6	3'-1"

DESIGNED	JML
CHECKED	MSW
DRAWN	DJM
CHECKED	MGO/MSW

DATE 08/09/10

FARNSWORTH GROUP, INC.

CONSULTING ENGINEERS - 2709 MCGRAW DRIVE BLOOMINGTON, ILLINOIS 61704 (309) 663-8435 / (309) 663-1571 FAX

**SUPERSTRUCTURE DECK  
STRUCTURE NO. 084-0078**

SHEET NO. B12	F.A.I. RTE.	SECTION	COUNTY	TOTAL SHEETS	SHEET NO.
	72	(84-3HB-5)BR	SANGAMON	84	48
42 SHEETS	SN 084-0078		CONTRACT NO. 72C70		
FED. ROAD DIST. NO. 6		ILLINOIS FED. AID PROJECT			