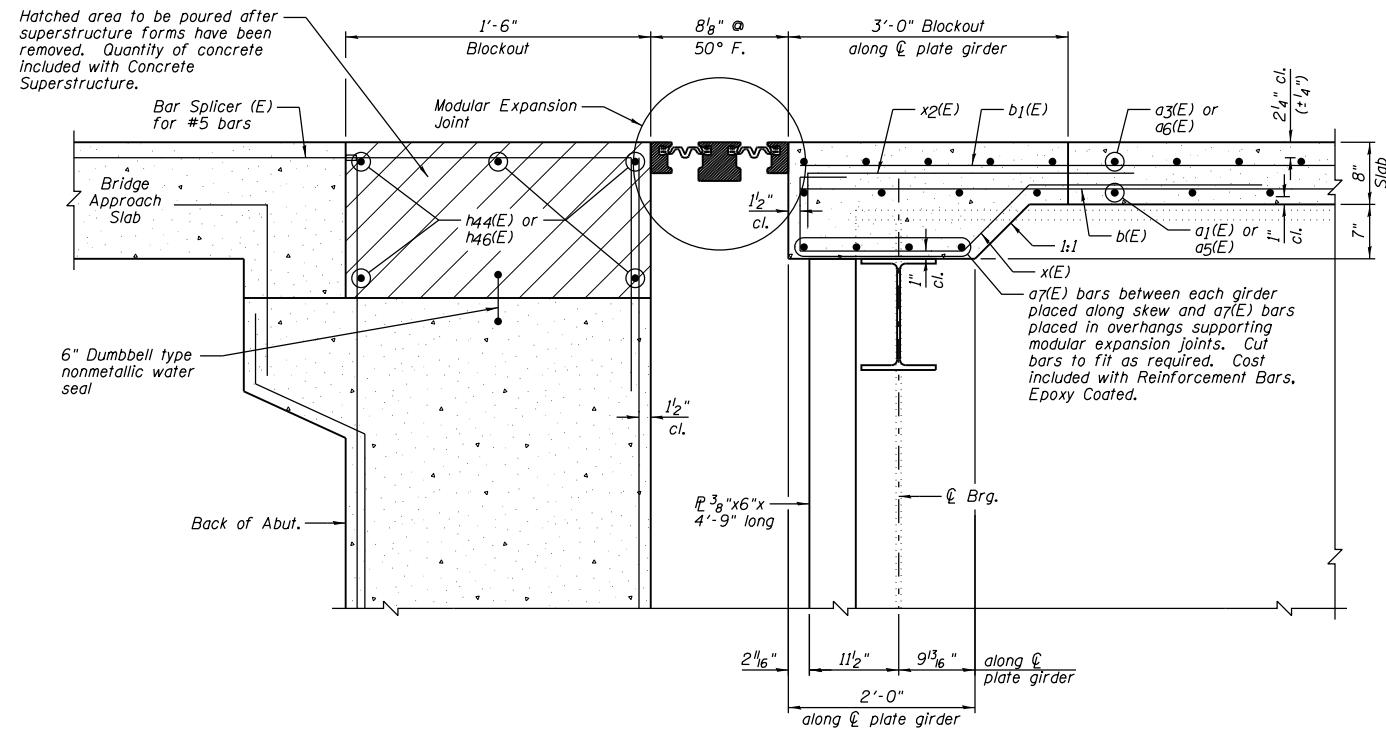
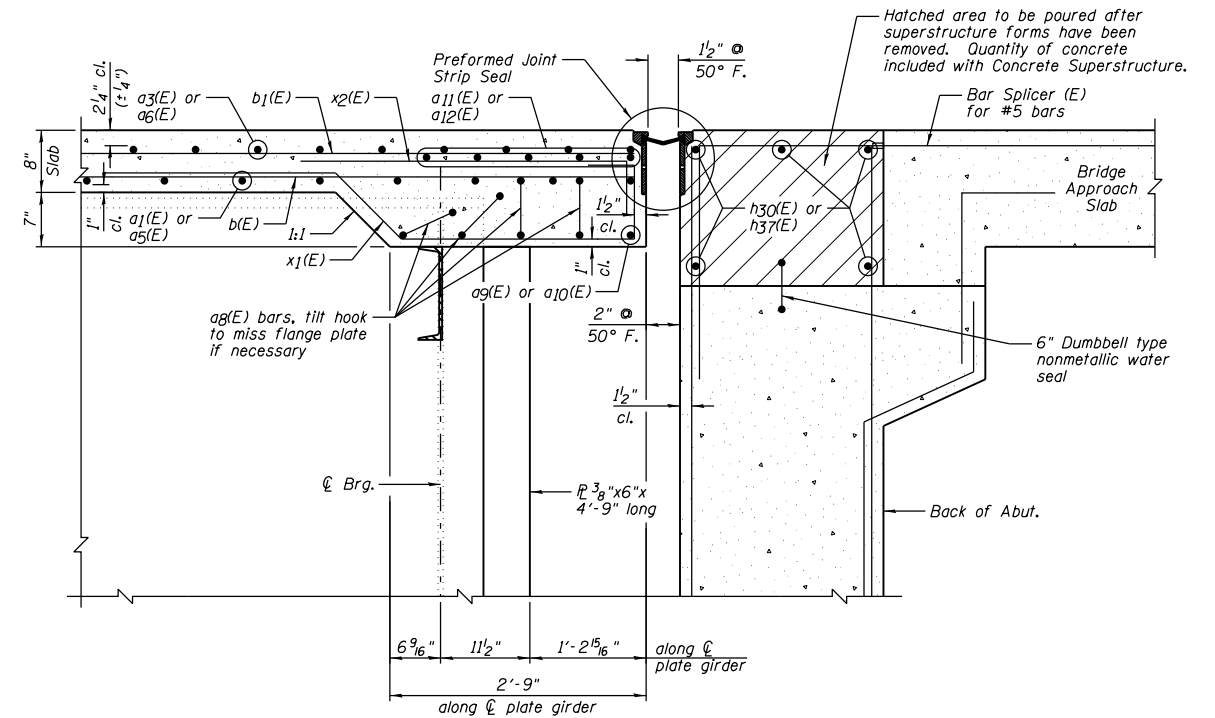


STATE OF ILLINOIS
DEPARTMENT OF TRANSPORTATION



SECTION THRU STRUCTURE AT WEST ABUTMENT

Unless noted otherwise, horizontal dimensions are at right angles.



SECTION THRU STRUCTURE AT EAST ABUTMENT

Unless noted otherwise, horizontal dimensions are at right angles.

NOTES:

- 1.) See Sheet B20 for Preformed Joint Strip Seal details.
- 2.) See Sheet B21 for Modular Expansion Joint details.
- 3.) See Sheets B30 thru B32 for West Abutment details.
- 4.) See Sheets B34 thru B36 for East Abutment details.
- 5.) See Sheet B16 for Superstructure Deck details & Bill of Material.
- 6.) See Sheet B41 for Bar Splicer details.

DESIGNED	JML
CHECKED	MSW
DRAWN	DJM
CHECKED	MGO/MSW

DATE 08/09/10

FARNSWORTH GROUP, INC.

CONSULTING ENGINEERS - 2709 MCGRAW DRIVE BLOOMINGTON, ILLINOIS 61704 (309) 663-8435 / (309) 663-1571 FAX

**SUPERSTRUCTURE DETAILS
STRUCTURE NO. 084-0078**

SHEET NO. B15	F.A.I. RTE.	SECTION	COUNTY	TOTAL SHEETS	SHEET NO.
	72	(84-3HB-5)BR	SANGAMON	84	51
42 SHEETS	SN 084-0078		CONTRACT NO. 72C70		
FED. ROAD DIST. NO. 6		ILLINOIS FED. AID PROJECT			