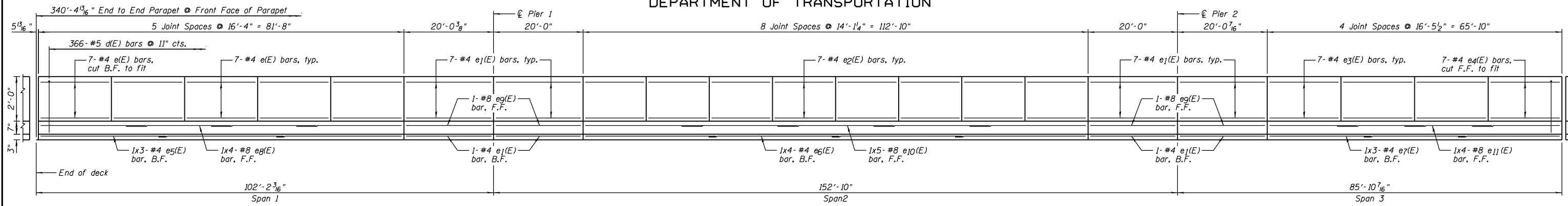
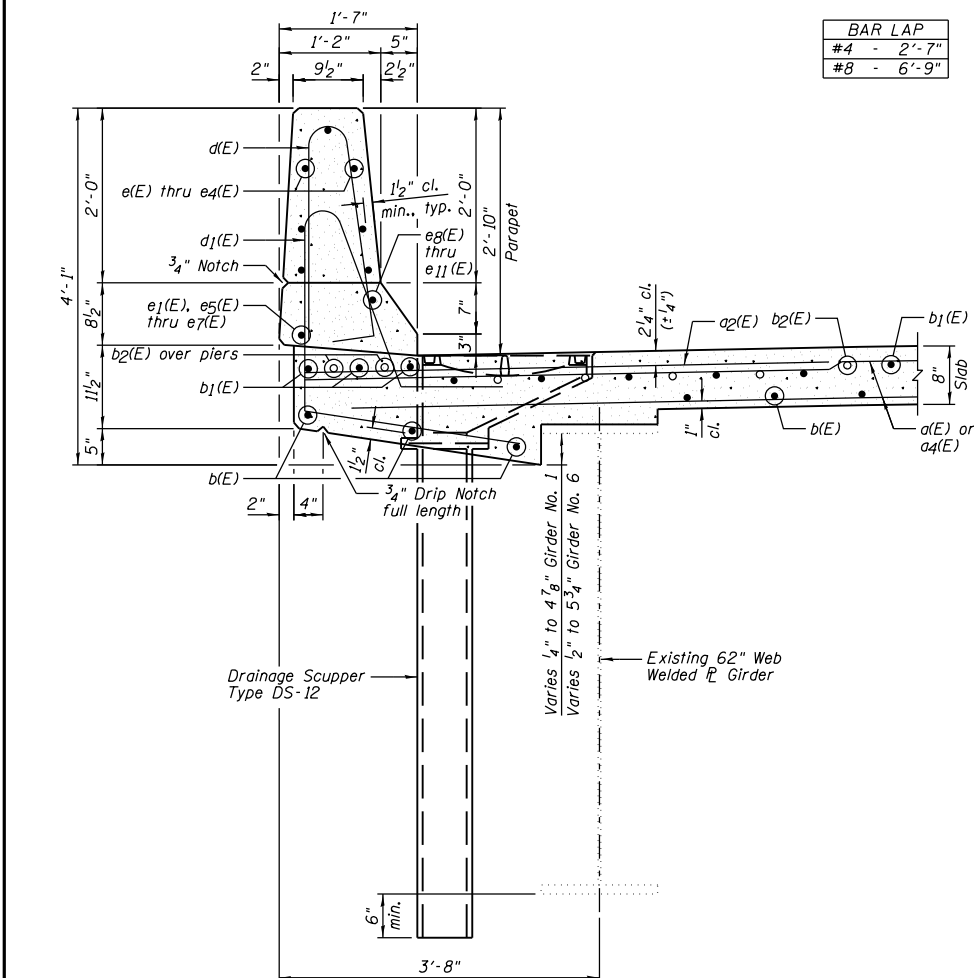


STATE OF ILLINOIS  
DEPARTMENT OF TRANSPORTATION

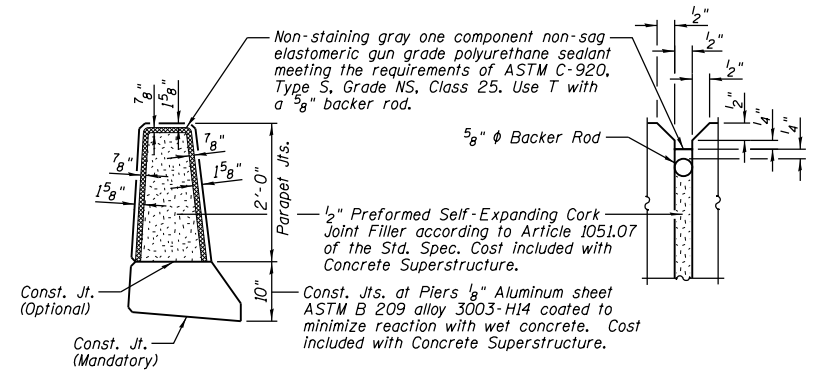


INSIDE ELEVATION OF PARAPET



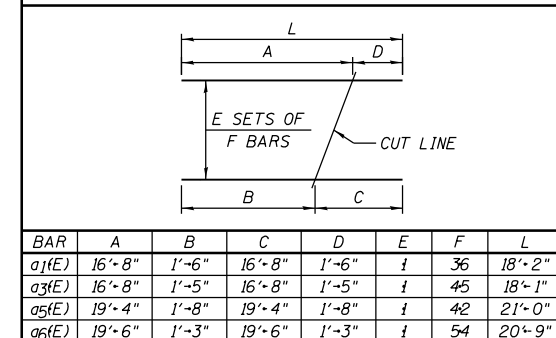
BAR LAP

#4	2'-7"
#8	6'-9"



PARAPET JOINT DETAILS

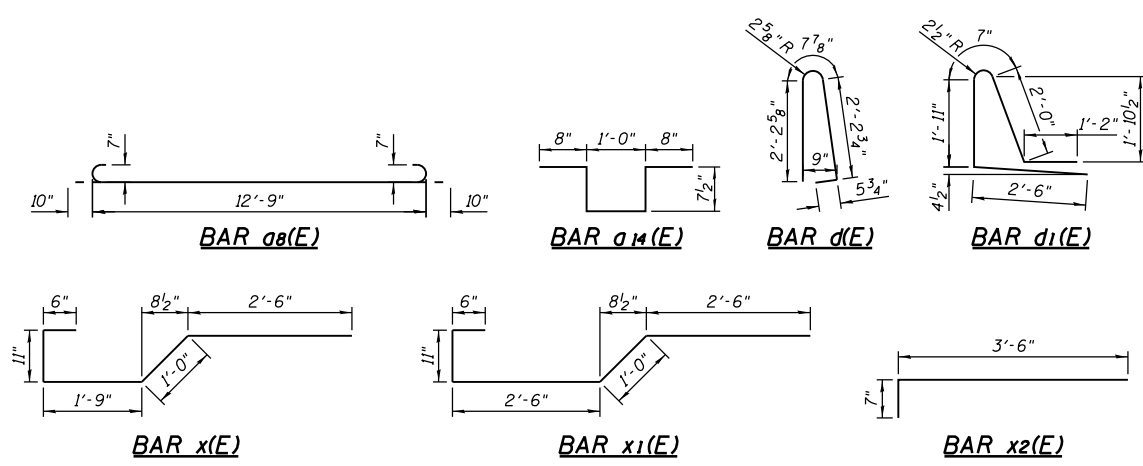
BAR CUTTING DIAGRAM



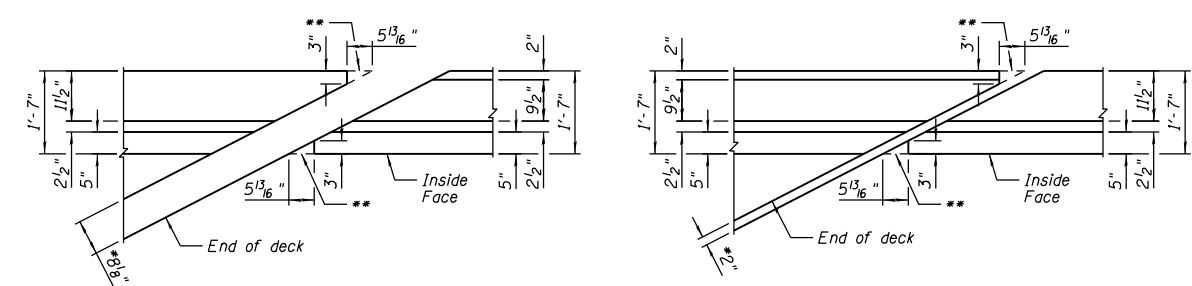
BAR	A	B	C	D	E	F	L
a1(E)	16'-8"	1'-6"	16'-8"	1'-6"	1	36	18'-2"
a3(E)	16'-8"	1'-5"	16'-8"	1'-5"	1	45	18'-1"
a5(E)	19'-4"	1'-8"	19'-4"	1'-8"	1	42	21'-0"
a6(E)	19'-6"	1'-3"	19'-6"	1'-3"	1	54	20'-9"

SUPERSTRUCTURE  
BILL OF MATERIAL

Bar	No.	Size	Length	Shape
a(E)	831	#5	16'-8"	---
a1(E)	36	#5	18'-2"	---
a2(E)	493	#6	6'-0"	---
a3(E)	45	#5	18'-1"	---
a4(E)	816	#5	19'-8"	---
a5(E)	42	#5	21'-0"	---
a6(E)	54	#5	20'-9"	---
a7(E)	24	#5	12'-9"	---
a8(E)	20	#7	14'-5"	---
a9(E)	1	#7	29'-1"	---
a10(E)	1	#7	35'-8"	---
a11(E)	5	#7	36'-4"	---
a12(E)	10	#7	24'-5"	---
a13(E)	32	#5	2'-0"	---
a14(E)	858	#4	3'-7"	---
b(E)	403	#5	28'-7"	---
b1(E)	492	#5	30'-9"	---
b2(E)	222	#6	28'-1"	---
b3(E)	60	#4	30'-6"	---
d(E)	730	#5	5'-7"	---
d1(E)	730	#5	8'-2"	---
e(E)	70	#4	16'-1"	---
e1(E)	64	#4	19'-9"	---
e2(E)	112	#4	13'-10"	---
e3(E)	42	#4	16'-2"	---
e4(E)	14	#4	18'-9"	---
e5(E)	6	#4	28'-0"	---
e6(E)	6	#4	30'-1"	---
e7(E)	6	#4	24'-6"	---
e8(E)	8	#8	25'-5"	---
e9(E)	8	#8	19'-9"	---
e10(E)	10	#8	27'-11"	---
e11(E)	8	#8	21'-6"	---
x(E)	35	#5	6'-8"	---
x1(E)	31	#5	7'-5"	---
x2(E)	70	#5	4'-1"	---
Item	Unit	Quantity		
Concrete Superstructure	Cu. Yd.	465.9		
Bridge Deck Grooving	Sq. Yd.	1233		
Protective Coat	Sq. Yd.	1637		
Reinforcement Bars	Pound	98,710		
Epoxy Coated				
Bar Splicers	Each	912		



SECTION THRU PARAPET



DETAIL A  
\*Modular joint opening  
\*\*Omitted during construction

DETAIL B  
\*Preformed joint opening  
\*\*Omitted during construction

NOTES:

- 1.) B.F. denotes Back Face and F.F. denotes Front Face.
- 2.) For location of Detail A and Detail B, see Sheet B12.
- 3.) Inside Elevation of Parapet view is exaggerated vertically to show reinforcement.
- 4.) Bars indicated thus 1x4-#4 etc. indicates 1 line of bars with 4 lengths per line.
- 5.) Space drainage scuppers to miss stud shear connectors and transverse reinforcing bars.

SUPERSTRUCTURE DETAILS  
STRUCTURE NO. 084-0078

DESIGNED	JML
CHECKED	MSW
DRAWN	DJM
CHECKED	MGO/MSW

DATE 08/09/10

SHEET NO. B16	F.A.I. RTE.	SECTION	COUNTY	TOTAL SHEETS	SHEET NO.
	72	(84-3HB-5)BR	SANGAMON	84	52
42 SHEETS	SN 084-0078		CONTRACT NO. 72C70		
FED. ROAD DIST. NO. 6		ILLINOIS	FED. AID PROJECT		