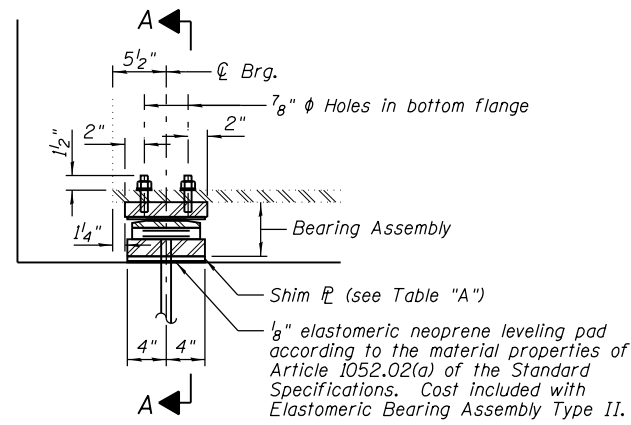
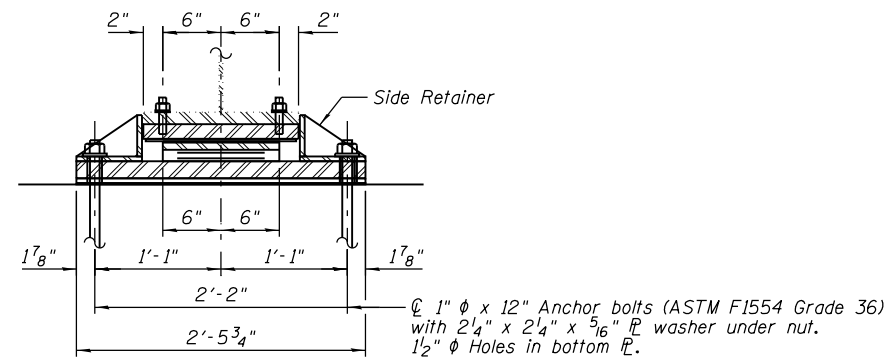


STATE OF ILLINOIS
DEPARTMENT OF TRANSPORTATION

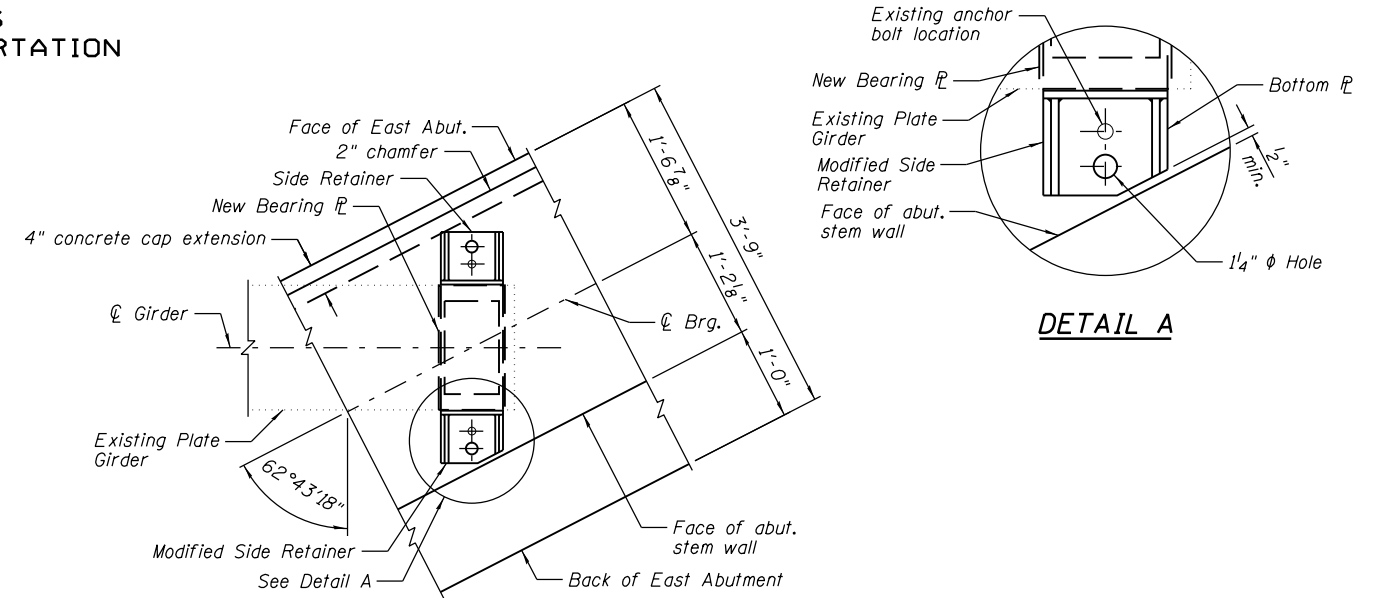


ELEVATION AT EAST ABUT.



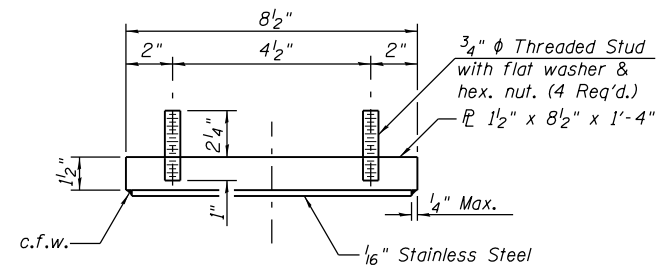
SECTION A-A

TYPE II ELASTOMERIC EXP. BRG.
(At East Abutment - 6 Required)

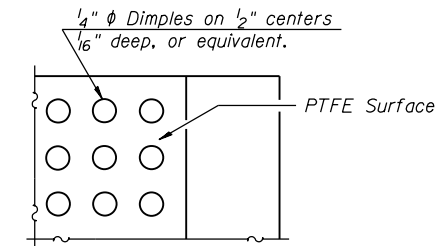


BEARING PLAN AT EAST ABUTMENT

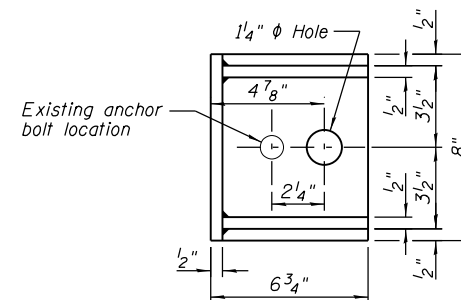
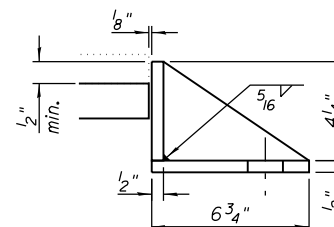
DETAIL A



TOP BEARING ASSEMBLY

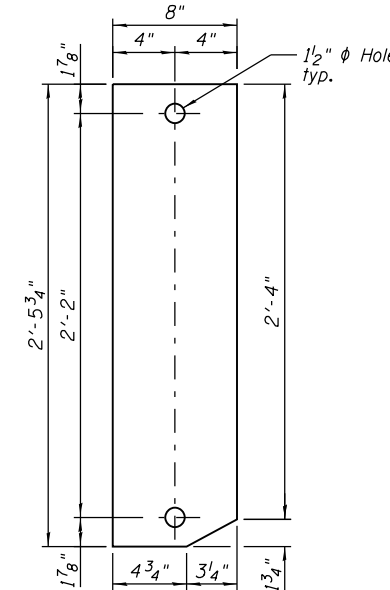


PLAN-PTFE SURFACE

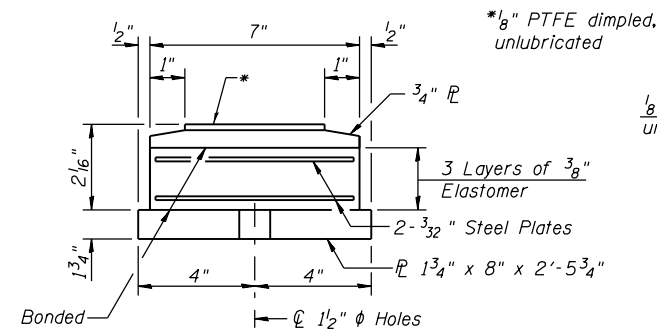


SIDE RETAINER

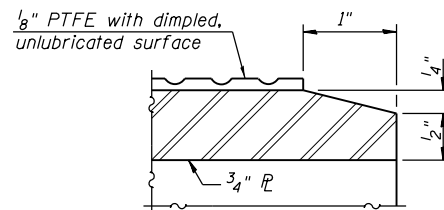
Equivalent rolled angle with stiffeners will be allowed in lieu of welded plates.



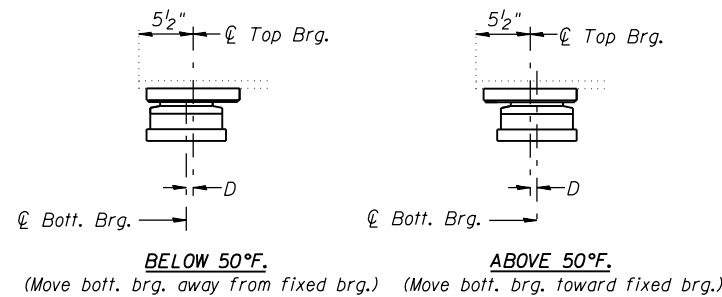
BOTTOM PLATE PLAN



BOTTOM BEARING ASSEMBLY

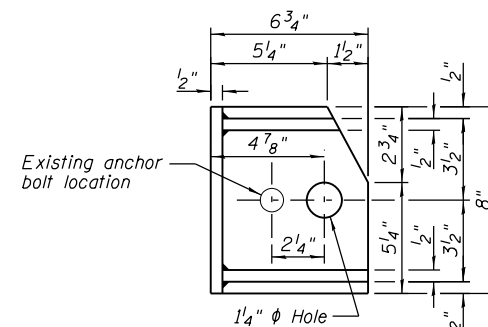


SECTION THRU PTFE



SETTING ANCHOR BOLTS AT EXP. BRG.

$D = \frac{1}{8}$ " per each 100' of expansion for every 15° temp. change from the normal temp. of 50°F.



MODIFIED SIDE RETAINER

Equivalent rolled angle with stiffeners will be allowed in lieu of welded plates.

Notes:

Anchor bolts shall be ASTM F1554 all-thread (or an Engineer-approved alternate material) of the grade(s) and diameter(s) specified. ASTM A307 Grade C anchor bolts may be used in lieu of ASTM F1554 Grade 36 (Fy=36ksi). The corresponding specified grade of AASHTO M314 anchor bolts may be used in lieu of ASTM F1554.

Anchor bolts for Type II bearings shall be placed in holes drilled in the concrete through holes in the bottom bearing plate after members are in place. Side retainers shall be placed after bolts are installed.

Drilled and set anchor bolts shall be installed according to Article 521.06 of the Standard Specifications.

Side retainers and other steel members required for the bearing assembly shall be included in the cost of Elastomeric Bearing Assembly, Type II.

The 1/8" PTFE sheet shall be bonded directly to the top steel plate with a two-component, medium viscosity epoxy resin, conforming to the requirements of the Federal Specification MMM-A-134, Type I. The bond agent shall be applied on the full area of the contact surfaces.

Bonding of 1/8" PTFE sheet during vulcanizing process will be permitted provided the process and method of adjusting assembly height is approved by the Engineer.

BILL OF MATERIAL

| Item | Unit | Total |
|---------------------------------------|------|-------|
| Elastomeric Bearing Assembly, Type II | Each | 6 |
| Anchor Bolts, 1" | Each | 12 |

TABLE "A"

| Girder No. | Shim Thickness |
|------------|----------------|
| 6 | 1/2" |

NOTE:

Two 1/8 in. adjusting shims shall be provided for each bearing in addition to all other plates or shims and placed as shown on bearing details.

**TYPE II ELASTOMERIC BEARING DETAILS
STRUCTURE NO. 084-0078**

| |
|-----------------|
| DESIGNED JML |
| CHECKED MSW |
| DRAWN DJM |
| CHECKED MGO/MSW |

DATE 08/09/10

| SHEET NO. B27 | F.A.I. RTE. | SECTION | COUNTY | TOTAL SHEETS | SHEET NO. |
|---------------|-------------|-----------------------|---------------------------|--------------|-----------|
| 42 SHEETS | 72 | (84-3HB-5)BR | SANGAMON | 84 | 63 |
| | | SN 084-0078 | CONTRACT NO. 72C70 | | |
| | | FED. ROAD DIST. NO. 6 | ILLINOIS FED. AID PROJECT | | |