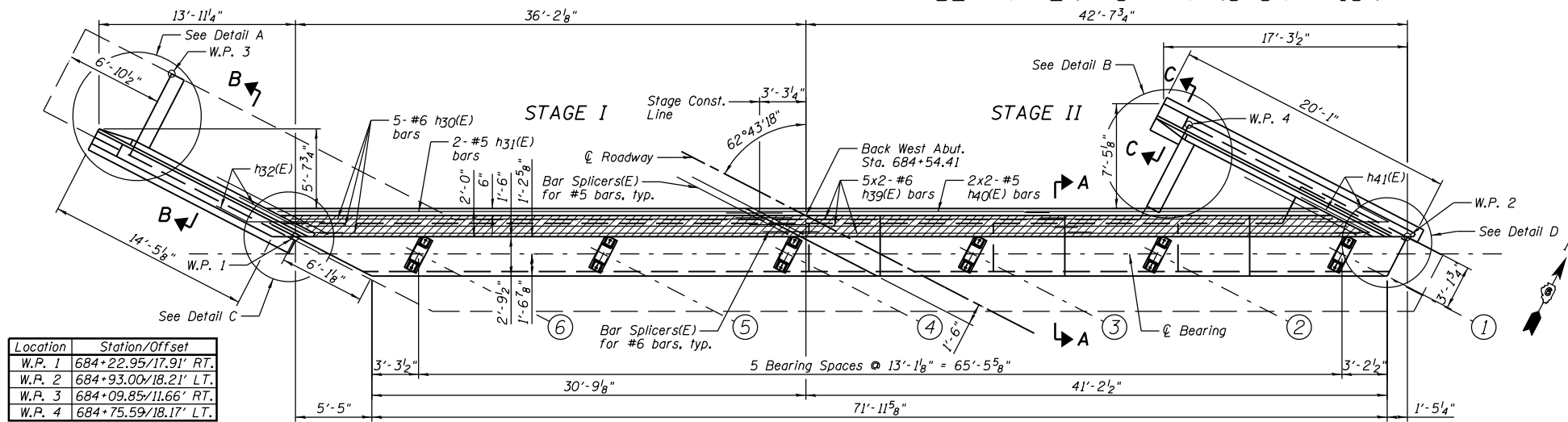
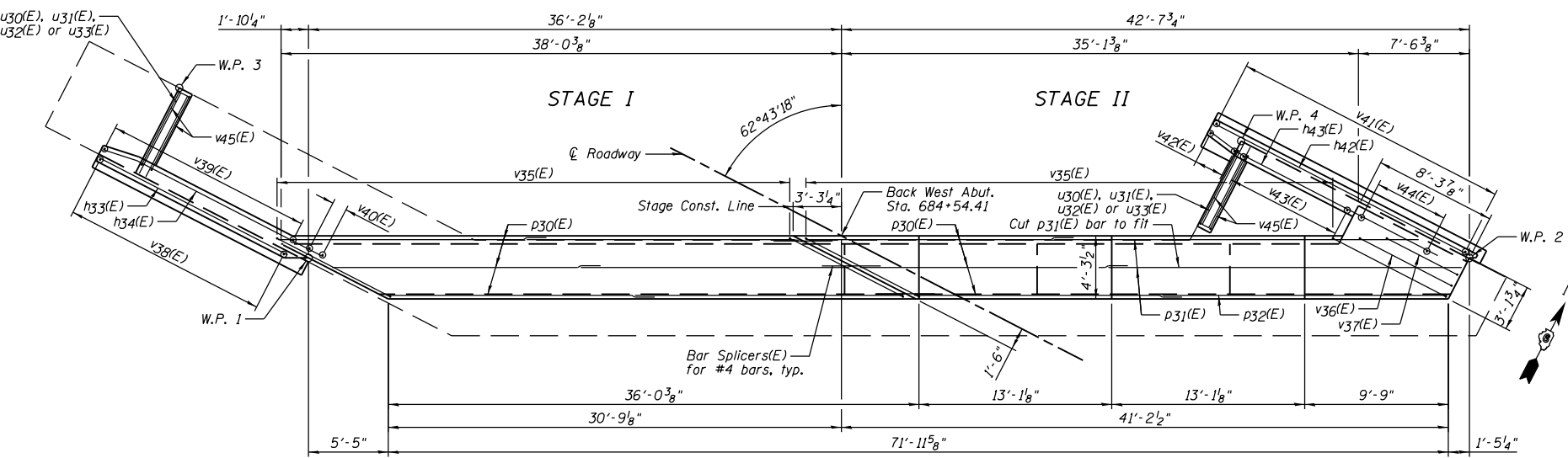


STATE OF ILLINOIS  
DEPARTMENT OF TRANSPORTATION

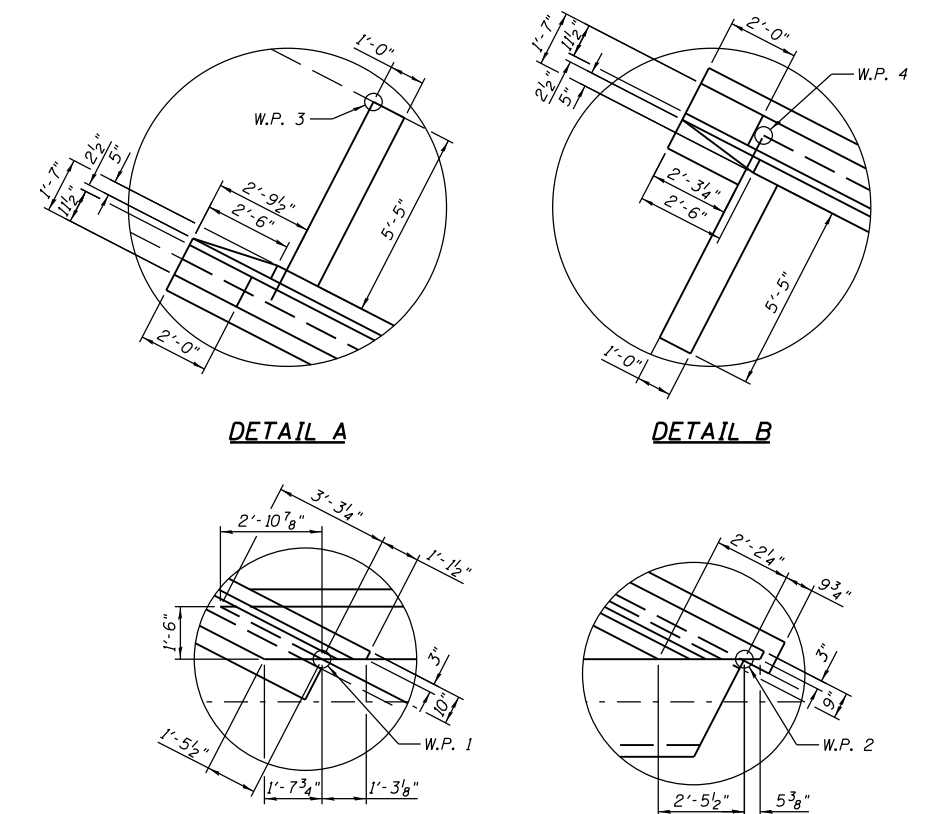


Location	Station/Offset
W.P. 1	684+22.95/17.91' RT.
W.P. 2	684+93.00/18.21' LT.
W.P. 3	684+09.85/11.66' RT.
W.P. 4	684+75.59/18.17' LT.

TOP VIEW



PLAN - BEARING SEAT

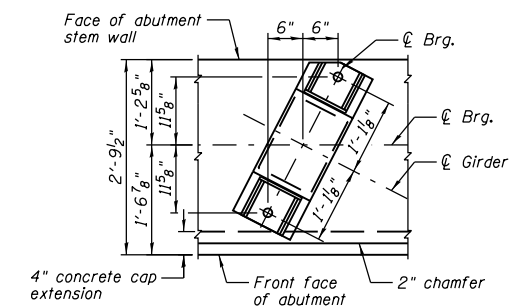


DETAIL A

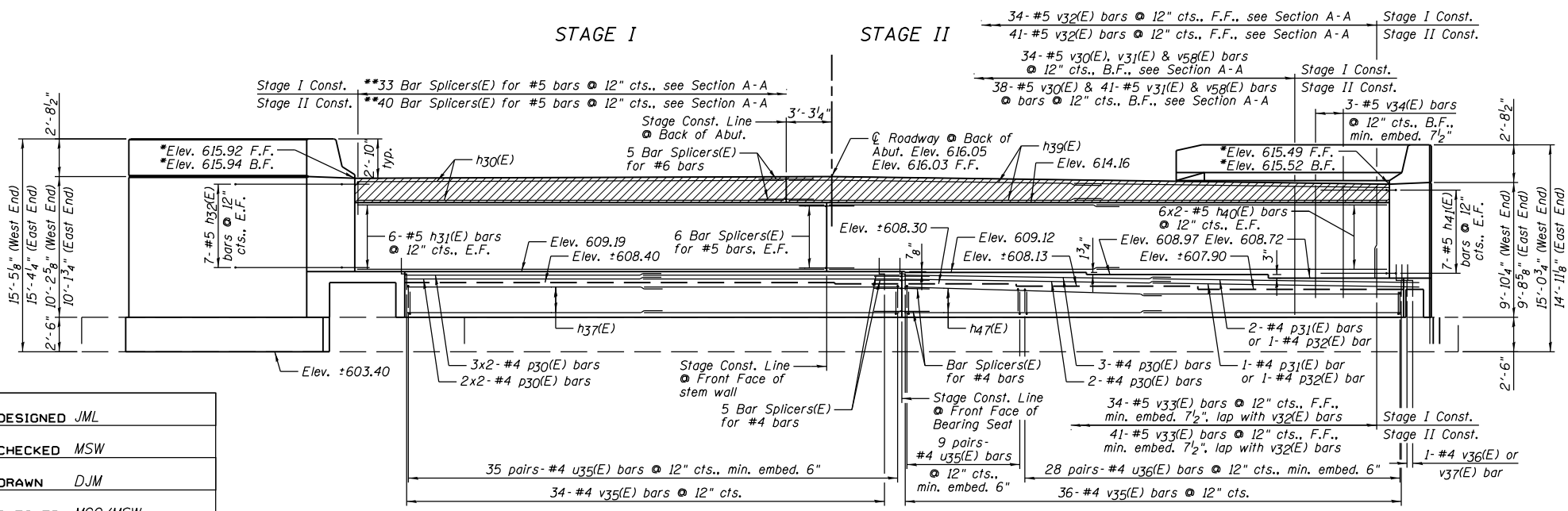
DETAIL B

DETAIL C

DETAIL D



TYPICAL ANCHOR BOLT  
PLACEMENT DETAIL



ELEVATION

NOTES:

- See Sheet B32 for Section A-A and Sheet B31 for Section B-B & C-C.
- Hatched area to be poured after superstructure false work has been removed. Quantity included with Concrete Superstructure shown on Sheet B16.
- Drill & epoxy grout u35(E), u36(E), v33(E) & v34(E) bars in appropriate drilled holes according to Section 584 of the Standard Specifications. The type of epoxy grout shall be approved by the Engineer.
- See Sheet B32 for Bill of Material.
- Space reinforcement in cap to miss anchor bolts.
- F.F. denotes Front Face, B.F. denotes Back Face & E.F. denotes Each Face.
- See Sheet B41 for Bar Splicer Details.
- Bar Splicers extending from the back wall into the approach slab shall be placed parallel to the approach slab reinforcement.

WEST ABUTMENT  
STRUCTURE NO. 084-0078

DESIGNED JML
CHECKED MSW
DRAWN DJM
CHECKED MGO/MSW

DATE 08/09/10

BAR LAP	Length
#4	2'-1"
#5	2'-7"
#6	3'-1"

SHEET NO. B30	F.A.I. RTE.	SECTION	COUNTY	TOTAL SHEETS	SHEET NO.
	72	(84-3HB-5)BR	SANGAMON	84	66
42 SHEETS	SN 084-0078		CONTRACT NO. 72C70		
FED. ROAD DIST. NO. 6		ILLINOIS FED. AID PROJECT			