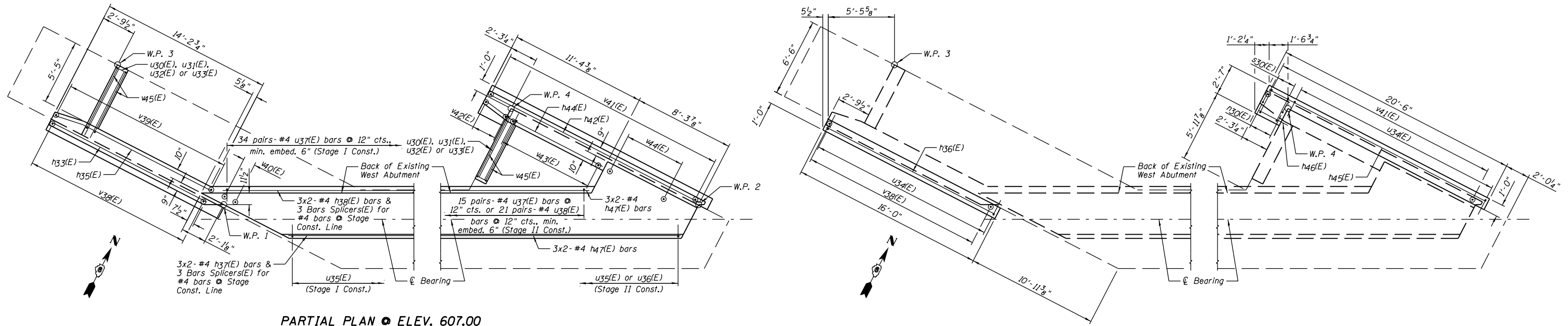
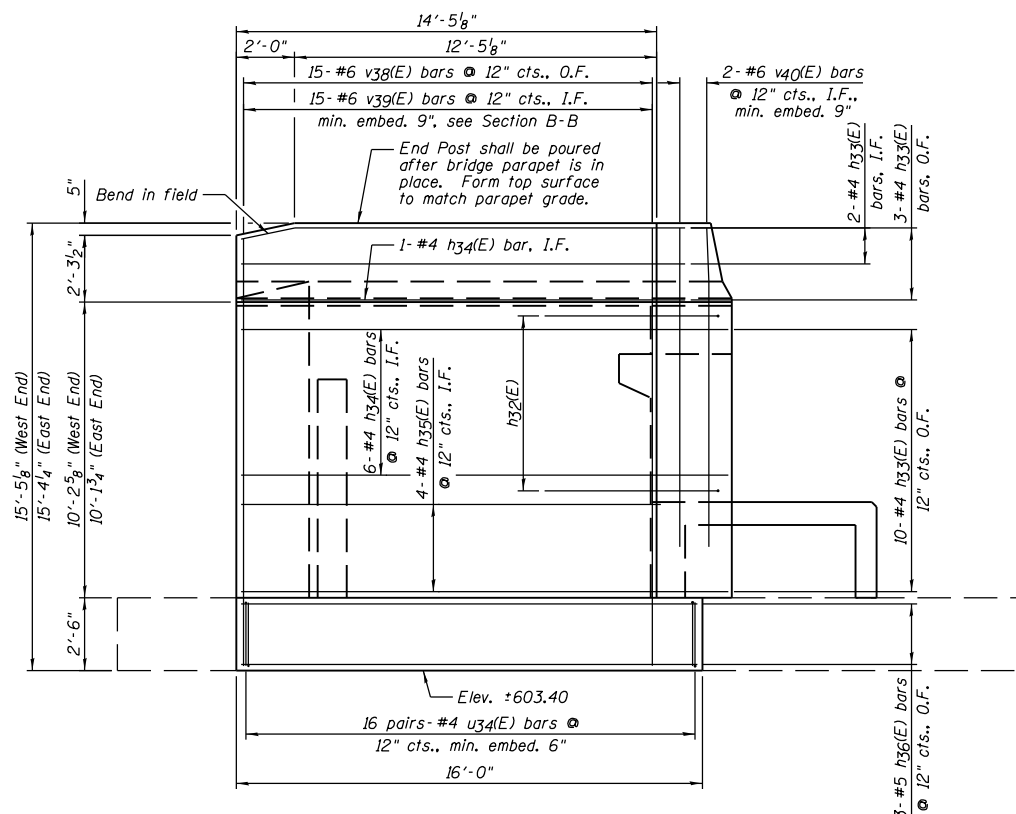


STATE OF ILLINOIS
DEPARTMENT OF TRANSPORTATION

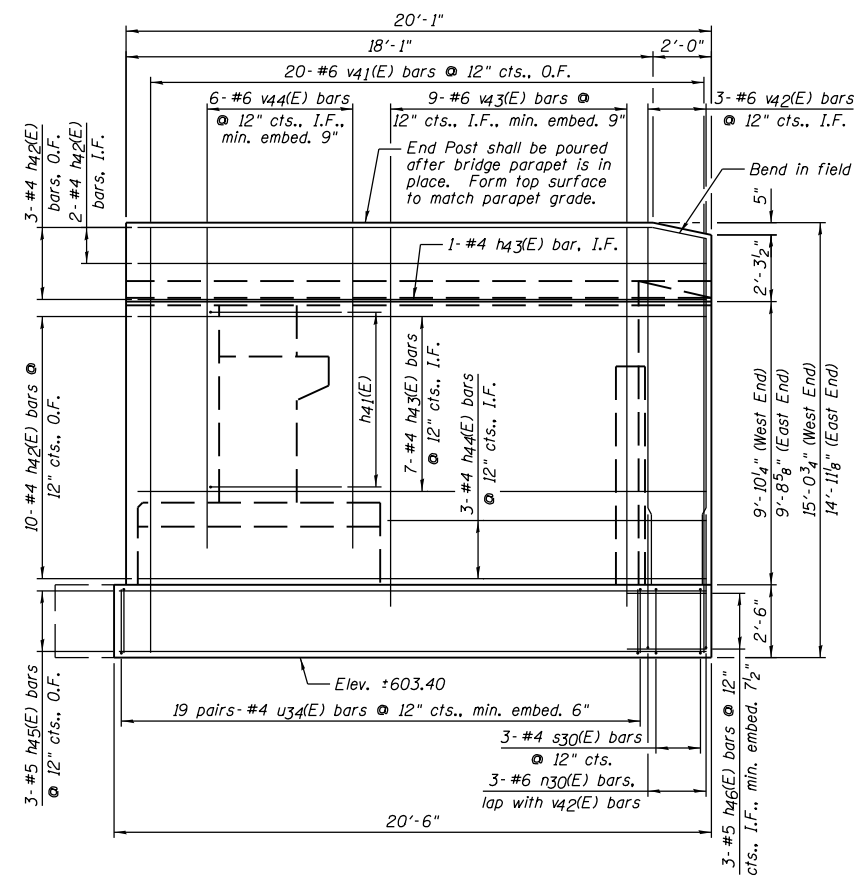


PARTIAL PLAN @ ELEV. 607.00

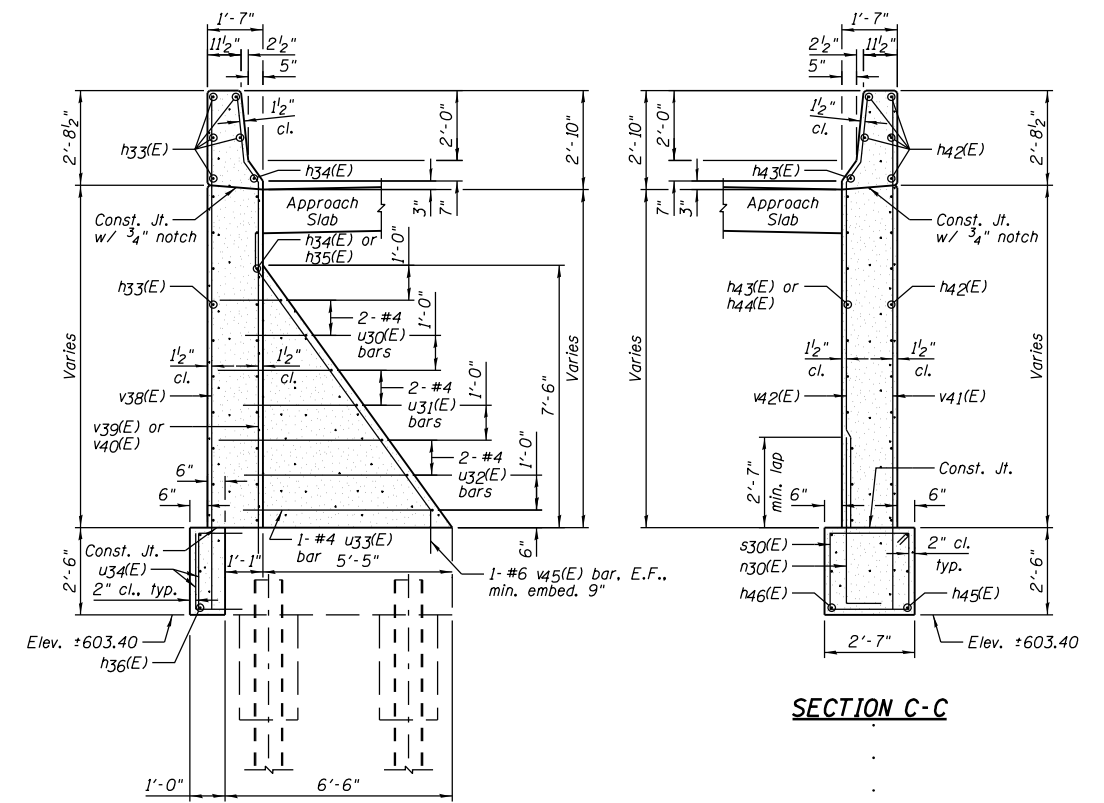
PARTIAL FOOTING PLAN



SOUTHWEST WINGWALL ELEVATION



NORTHWEST WINGWALL ELEVATION



SECTION B-B

(Similar For Northwest Wingwall)

SECTION C-C

DESIGNED	JML
CHECKED	MSW
DRAWN	DJM
CHECKED	MGO/MSW

DATE 08/09/10

NOTES:

- 1.) See Sheet B30 for location of Sections B-B & C-C.
- 2.) Drill & epoxy grout h46(E), u34(E) thru u38(E), v39(E), w40(E), & w43(E) thru w45(E) bars in appropriate drilled holes according to Section 584 of the Standard Specifications. The type of epoxy grout shall be approved by the Engineer.
- 3.) See Sheet B32 for Bill of Material.
- 4.) I.F. denotes Inside Face & O.F. denotes Outside Face.

FARNSWORTH GROUP, INC.

CONSULTING ENGINEERS - 2709 MCGRAW DRIVE BLOOMINGTON, ILLINOIS 61704 (309) 663-8435 / (309) 663-1571 FAX

WEST ABUTMENT
STRUCTURE NO. 084-0078

SHEET NO. B31	F.A.I. RTE.	SECTION	COUNTY	TOTAL SHEETS	SHEET NO.
	72	(84-3HB-5)BR	SANGAMON	84	67
42 SHEETS	SN 084-0078		CONTRACT NO. 72C70		
FED. ROAD DIST. NO. 6		ILLINOIS FED. AID PROJECT			