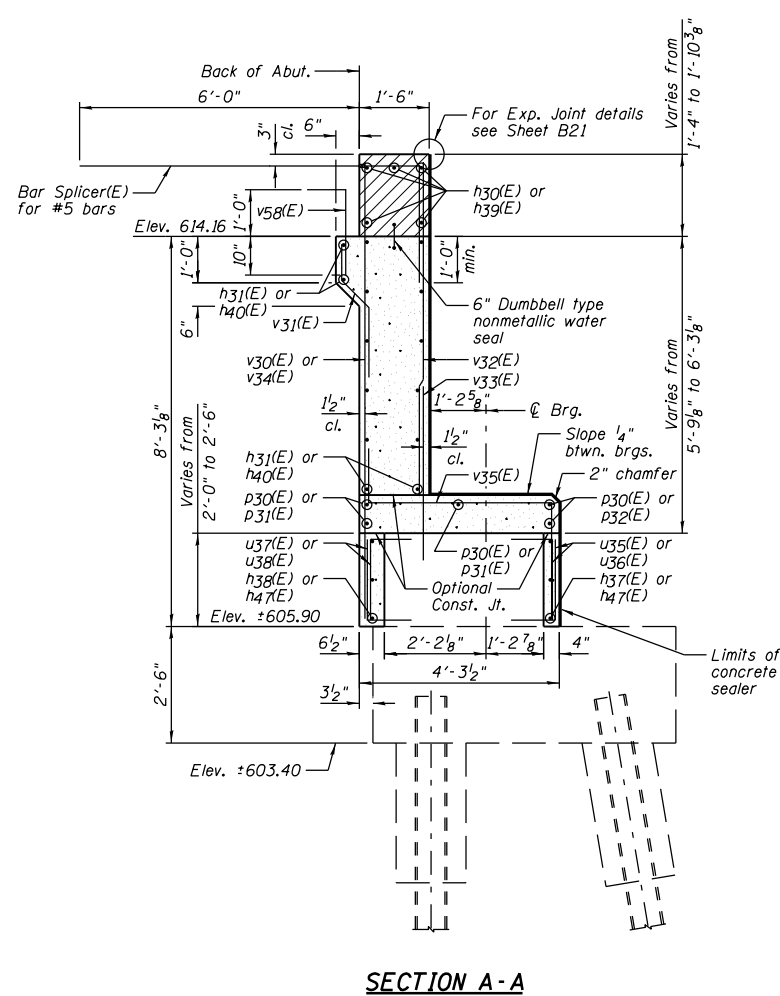
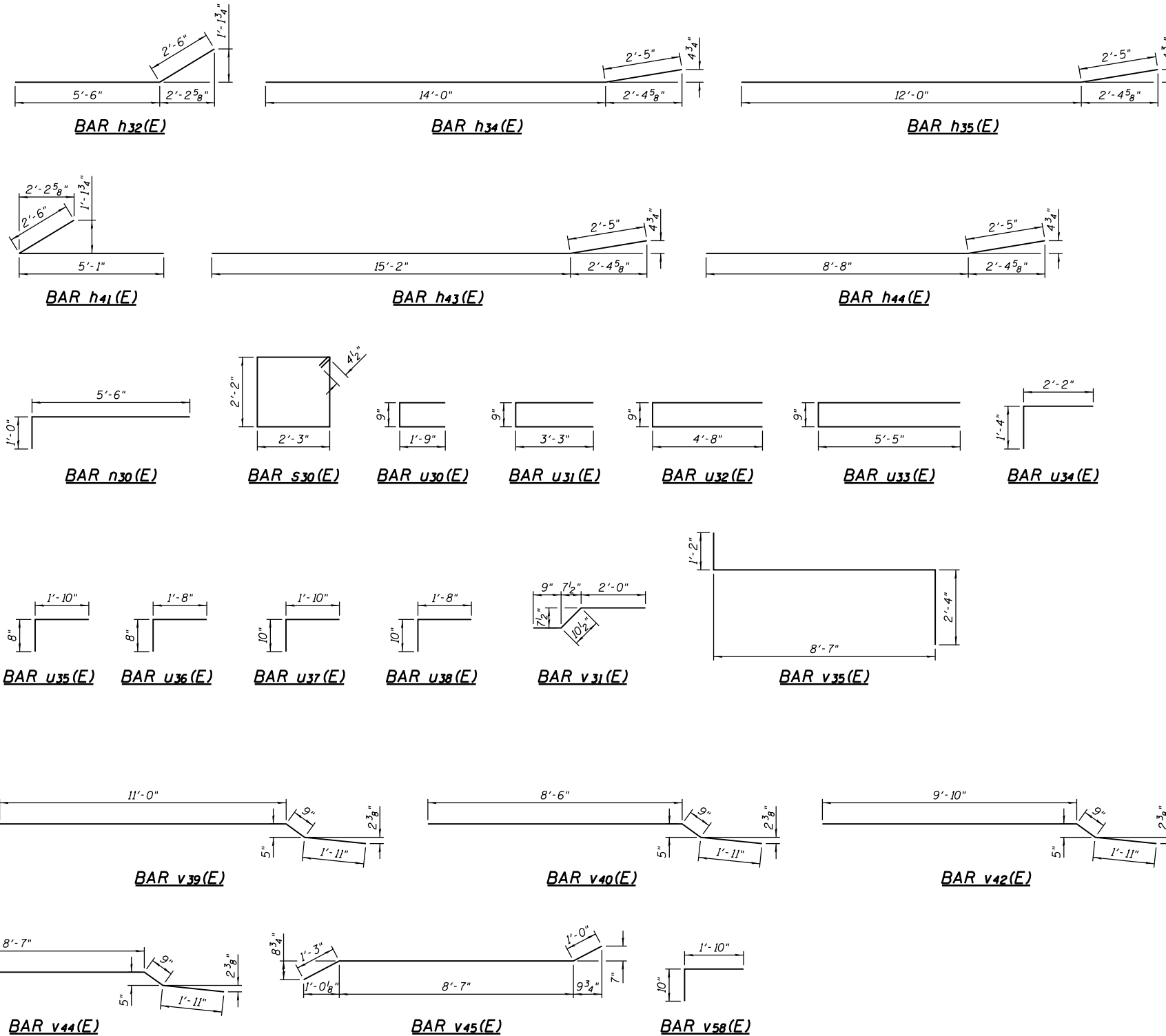


STATE OF ILLINOIS  
DEPARTMENT OF TRANSPORTATION

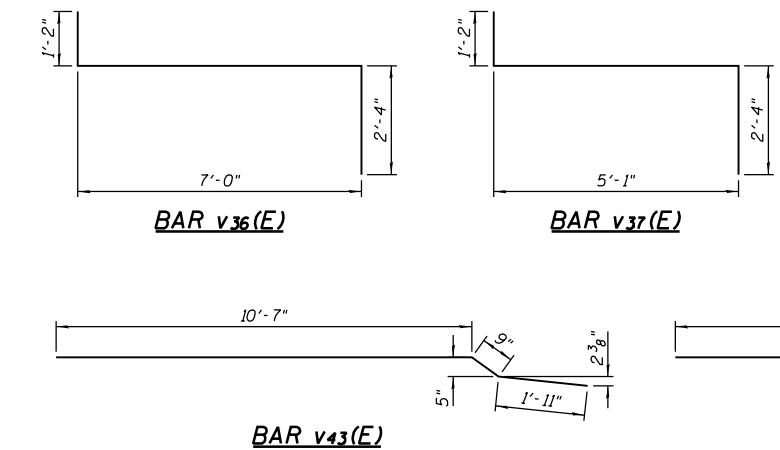


SECTION A-A



WEST ABUTMENT  
BILL OF MATERIAL

| Bar                                 | No.     | Size     | Length  | Shape |
|-------------------------------------|---------|----------|---------|-------|
| h30(E)                              | 5       | #6       | 33'-3"  |       |
| h31(E)                              | 14      | #5       | 33'-3"  |       |
| h32(E)                              | 14      | #5       | 8'-0"   |       |
| h33(E)                              | 15      | #4       | 14'-4"  |       |
| h34(E)                              | 7       | #4       | 16'-5"  |       |
| h35(E)                              | 4       | #4       | 14'-5"  |       |
| h36(E)                              | 3       | #5       | 15'-8"  |       |
| h37(E)                              | 6       | #4       | 18'-7"  |       |
| h38(E)                              | 6       | #4       | 17'-8"  |       |
| h39(E)                              | 10      | #6       | 21'-6"  |       |
| h40(E)                              | 28      | #5       | 21'-3"  |       |
| h41(E)                              | 14      | #5       | 7'-7"   |       |
| h42(E)                              | 15      | #4       | 19'-4"  |       |
| h43(E)                              | 8       | #4       | 17'-7"  |       |
| h44(E)                              | 3       | #4       | 11'-1"  |       |
| h45(E)                              | 3       | #5       | 20'-2"  |       |
| h46(E)                              | 3       | #5       | 2'-9"   |       |
| h47(E)                              | 12      | #4       | 19'-0"  |       |
| h30(E)                              | 3       | #6       | 6'-6"   |       |
| p30(E)                              | 15      | #4       | 18'-7"  |       |
| p31(E)                              | 3       | #4       | 24'-9"  |       |
| p32(E)                              | 2       | #4       | 19'-4"  |       |
| s30(E)                              | 3       | #4       | 9'-7"   |       |
| u30(E)                              | 4       | #4       | 4'-3"   |       |
| u31(E)                              | 4       | #4       | 7'-3"   |       |
| u32(E)                              | 4       | #4       | 10'-1"  |       |
| u33(E)                              | 2       | #4       | 11'-7"  |       |
| u34(E)                              | 70      | #4       | 3'-6"   |       |
| u35(E)                              | 88      | #4       | 2'-6"   |       |
| u36(E)                              | 56      | #4       | 2'-4"   |       |
| u37(E)                              | 98      | #4       | 2'-8"   |       |
| u38(E)                              | 42      | #4       | 2'-6"   |       |
| v30(E)                              | 72      | #5       | 9'-4"   |       |
| v31(E)                              | 72      | #5       | 3'-8"   |       |
| v32(E)                              | 75      | #5       | 6'-5"   |       |
| v33(E)                              | 75      | #5       | 4'-3"   |       |
| v34(E)                              | 3       | #5       | 8'-1"   |       |
| v35(E)                              | 70      | #4       | 12'-1"  |       |
| v36(E)                              | 1       | #4       | 10'-6"  |       |
| v37(E)                              | 1       | #4       | 8'-7"   |       |
| v38(E)                              | 15      | #6       | 15'-0"  |       |
| v39(E)                              | 15      | #6       | 13'-8"  |       |
| v40(E)                              | 2       | #6       | 11'-2"  |       |
| v41(E)                              | 20      | #6       | 14'-7"  |       |
| v42(E)                              | 3       | #6       | 12'-6"  |       |
| v43(E)                              | 9       | #6       | 13'-3"  |       |
| v44(E)                              | 6       | #6       | 11'-3"  |       |
| v45(E)                              | 4       | #6       | 10'-10" |       |
| v58(E)                              | 72      | #5       | 2'-8"   |       |
| Item                                | Unit    | Quantity |         |       |
| Porous Granular Embankment, Special | Cu. Yd. | 248      |         |       |
| Structure Excavation                | Cu. Yd. | 334      |         |       |
| Concrete Structures                 | Cu. Yd. | 67.7     |         |       |
| Reinforcement Bars, Epoxy Coated    | Pound   | 8,050    |         |       |
| Bar Splicers                        | Each    | 103      |         |       |
| Concrete Sealer                     | Sq. Ft. | 1017     |         |       |
| Geocomposite Wall Drain             | Sq. Yd. | 93       |         |       |
| Pipe Underdrain for Structures 4"   | Foot    | 95       |         |       |



NOTES:

- See Sheet B30 for location of Section A-A.
- Hatched area to be poured after superstructure false work has been removed. Quantity included with Concrete Superstructure shown on Sheet B16.
- Drill & epoxy grout u35(E) thru u38(E) & v33(E) bars in appropriate drilled holes according to Section 584 of the Standard Specifications. The type of epoxy grout shall be approved by the Engineer.
- Space reinforcement in cap to miss anchor bolts.
- See Sheet B41 for Bar Splicer Details.

|          |         |
|----------|---------|
| DESIGNED | JML     |
| CHECKED  | MSW     |
| DRAWN    | DJM     |
| CHECKED  | MGO/MSW |

DATE 08/09/10

FARNSWORTH GROUP, INC.

WEST ABUTMENT  
STRUCTURE NO. 084-0078

|                       |             |                           |                    |              |           |
|-----------------------|-------------|---------------------------|--------------------|--------------|-----------|
| SHEET NO. B32         | F.A.I. RTE. | SECTION                   | COUNTY             | TOTAL SHEETS | SHEET NO. |
|                       | 72          | (84-3HB-5)BR              | SANGAMON           | 84           | 68        |
| 42 SHEETS             | SN 084-0078 |                           | CONTRACT NO. 72C70 |              |           |
| FED. ROAD DIST. NO. 6 |             | ILLINOIS FED. AID PROJECT |                    |              |           |