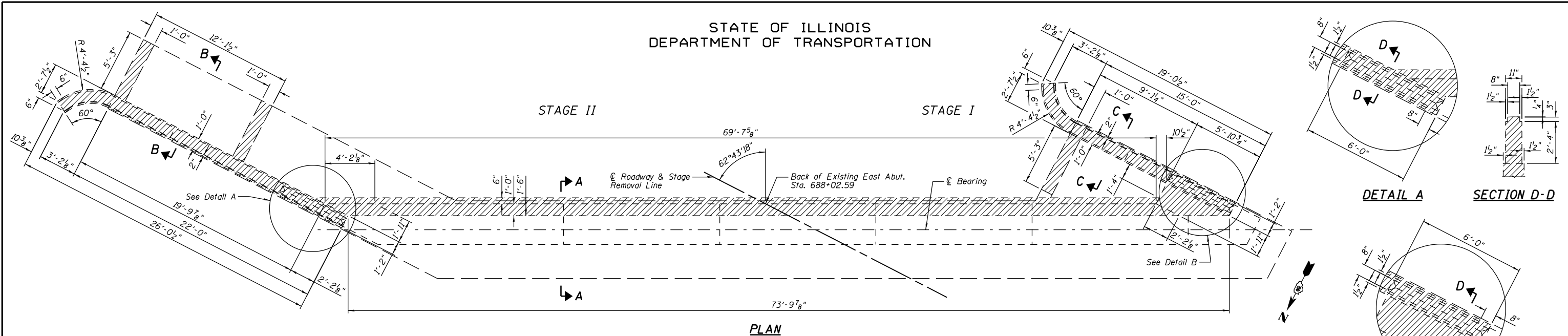
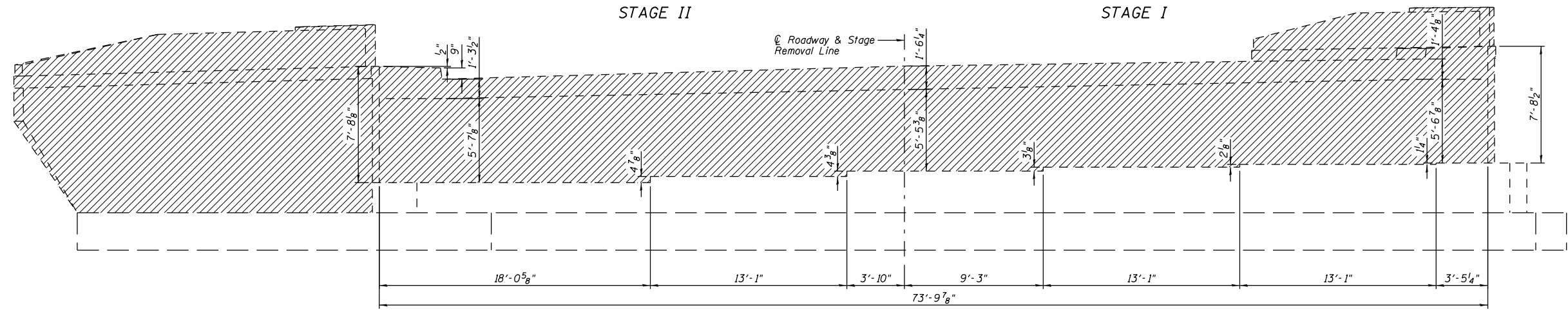


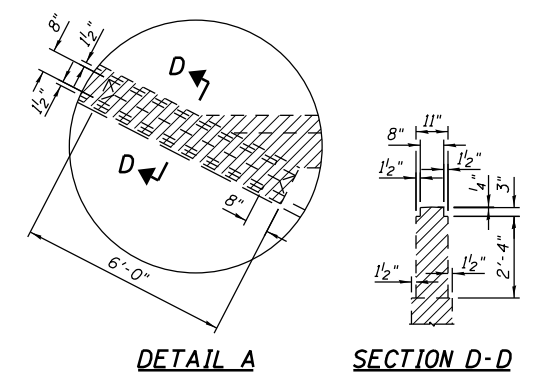
STATE OF ILLINOIS  
DEPARTMENT OF TRANSPORTATION



PLAN

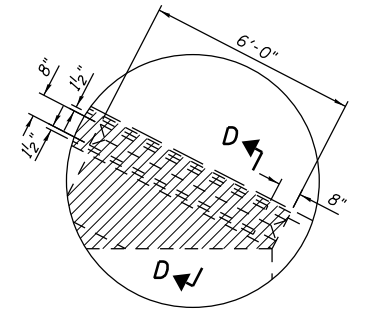


ELEVATION  
(Looking Southeast)

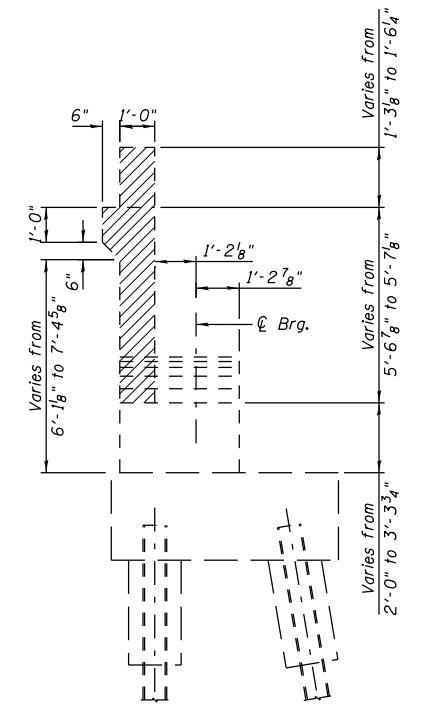


DETAIL A

SECTION D-D



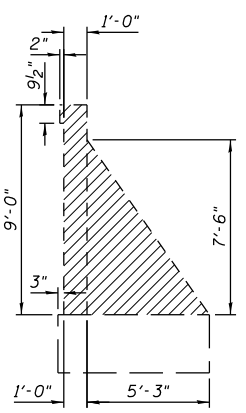
DETAIL B



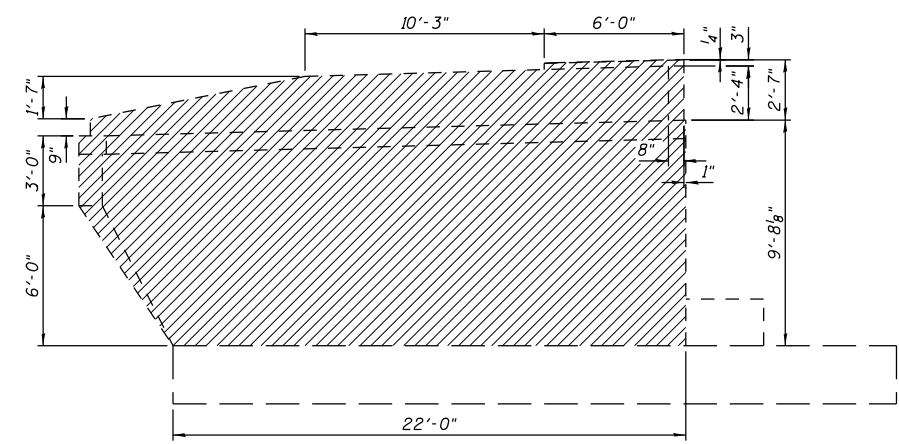
SECTION A-A  
(@ Rt. L's)

**NOTE:**  
Existing reinforcement shall be cut off flush.

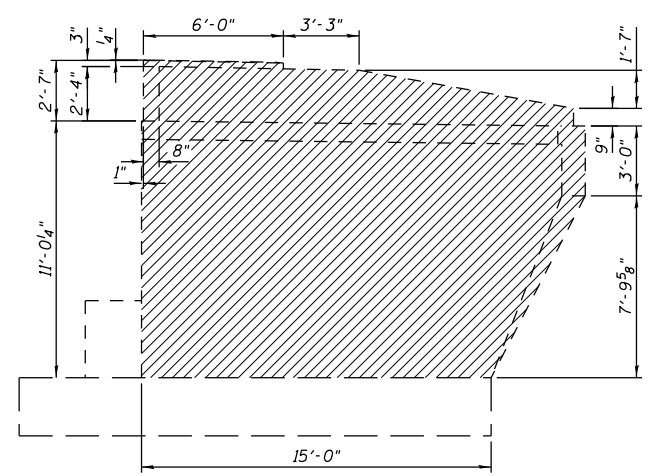
**EAST ABUTMENT REMOVAL  
STRUCTURE NO. 084-0078**



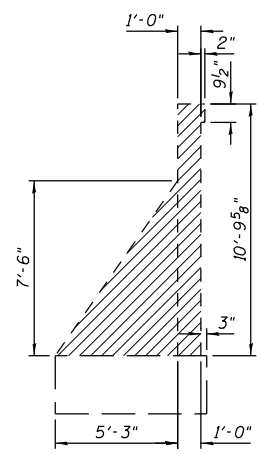
SECTION B-B



NORTHEAST WINGWALL ELEVATION

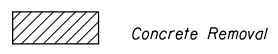


SOUTHEAST WINGWALL ELEVATION



SECTION C-C

**LEGEND**



Concrete Removal

**BILL OF MATERIAL**

Item	Unit	Total
Concrete Removal	Cu. Yd.	33.9

DESIGNED	JML
CHECKED	MSW
DRAWN	DJM
CHECKED	MGO/MSW

DATE 08/09/10

FARNSWORTH GROUP, INC.

CONSULTING ENGINEERS - 2709 MCGRAW DRIVE BLOOMINGTON, ILLINOIS 61704 (309) 663-8435 / (309) 663-1571 FAX

SHEET NO. B33 42 SHEETS	F.A.I. RTE. 72	SECTION (84-3HB-5)BR	COUNTY SANGAMON	TOTAL SHEETS 84	SHEET NO. 69
	SN 084-0078		CONTRACT NO. 72C70		
FED. ROAD DIST. NO. 6 ILLINOIS FED. AID PROJECT					