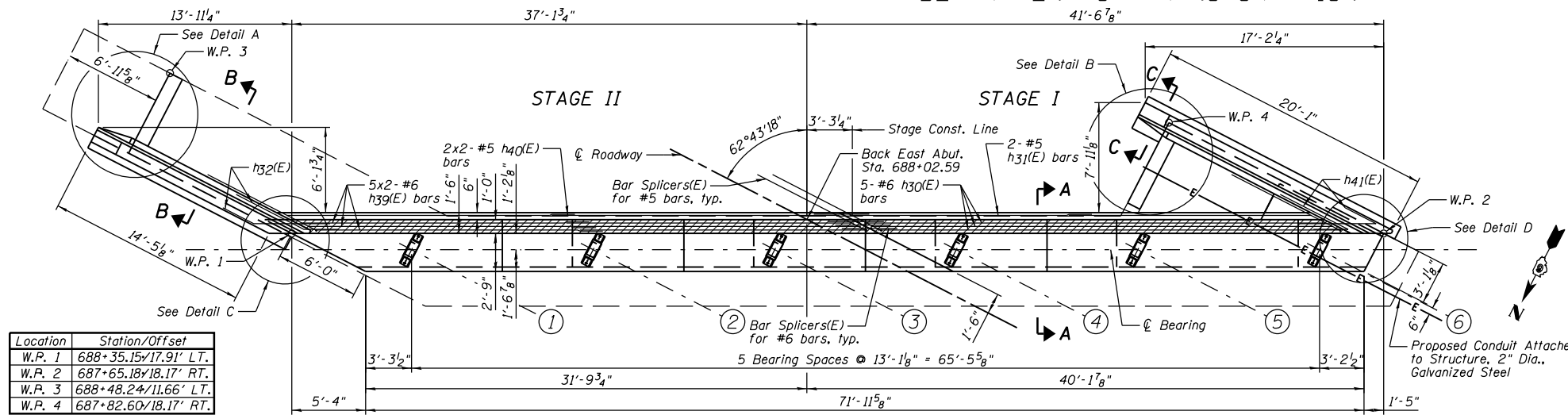
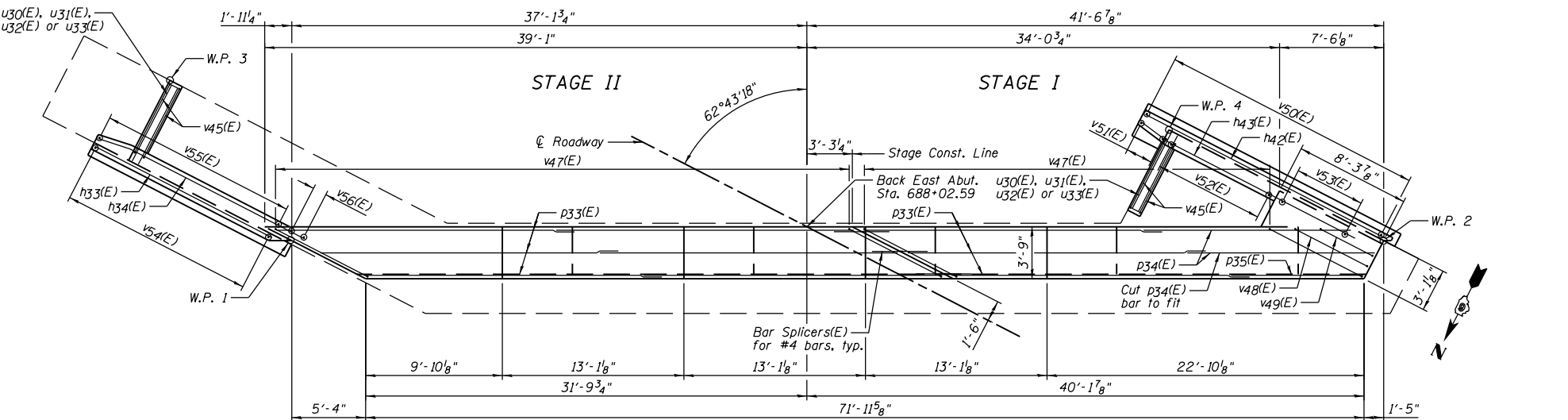


STATE OF ILLINOIS
DEPARTMENT OF TRANSPORTATION

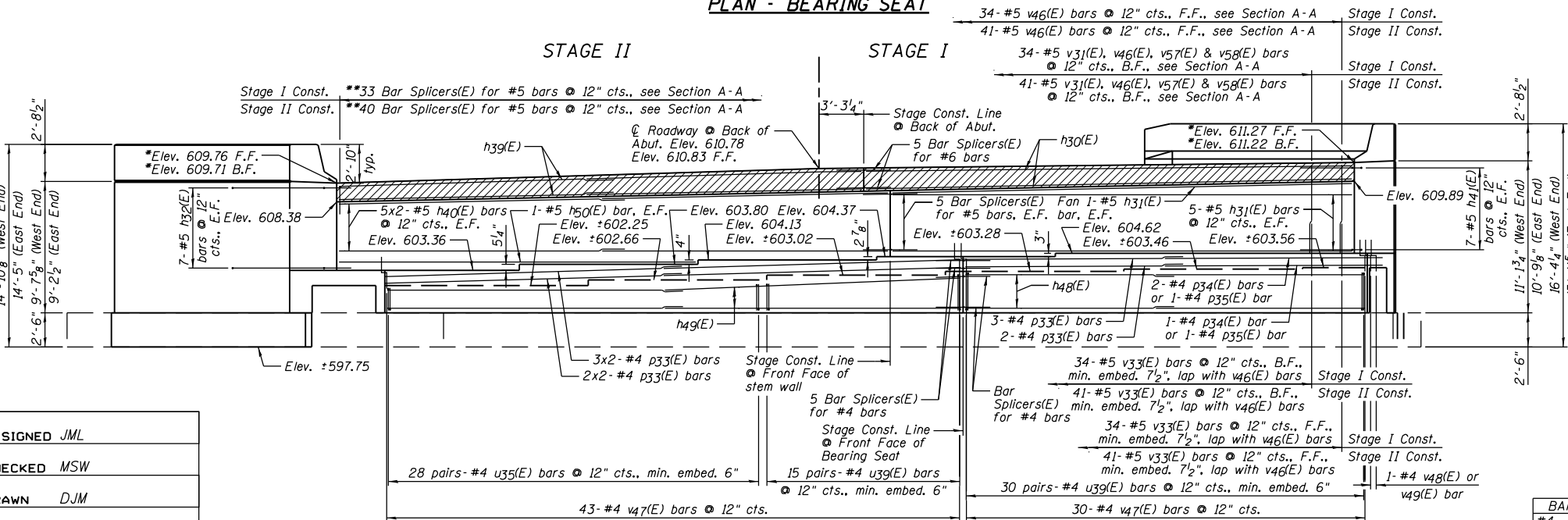


Location	Station/Offset
W.P. 1	688+35.15/17.91' LT.
W.P. 2	687+65.18/18.17' RT.
W.P. 3	688+48.24/11.66' LT.
W.P. 4	687+82.60/18.17' RT.

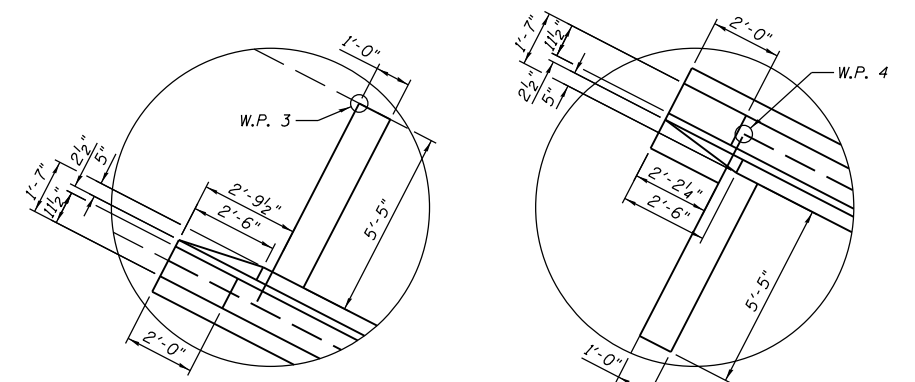
TOP VIEW



PLAN - BEARING SEAT

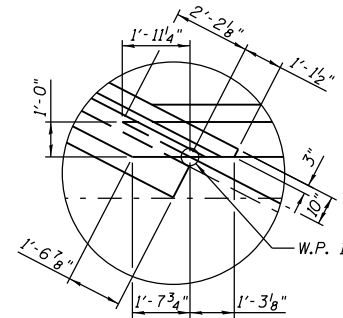


ELEVATION

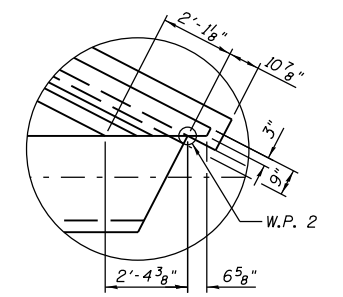


DETAIL A

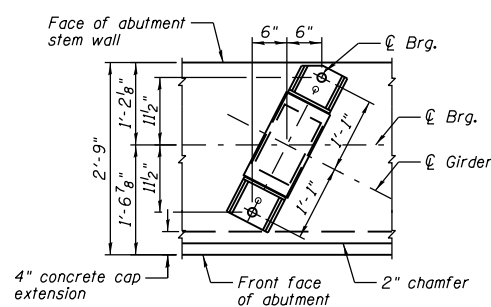
DETAIL B



DETAIL C



DETAIL D



TYPICAL ANCHOR BOLT PLACEMENT DETAIL

NOTES:

- 1.) See Sheet B36 for Section A-A and Sheet B35 for Section B-B & C-C.
- 2.) Hatched area to be poured after superstructure false work has been removed. Quantity included with Concrete Superstructure shown on Sheet B16.
- 3.) Drill & epoxy grout u35(E), u39(E) & v33(E) bars in appropriate drilled holes according to Section 584 of the Standard Specifications. The type of epoxy grout shall be approved by the Engineer.
- 4.) See Sheet B36 for Bill of Material.
- 5.) Space reinforcement in cap to miss anchor bolts.
- 6.) F.F. denotes Front Face, B.F. denotes Back Face & E.F. denotes Each Face.
- 7.) See Sheet B41 for Bar Splicer Details.
- 8.) Bar Splicers extending from the back wall into the approach slab shall be placed parallel to the approach slab reinforcement.
- 9.) Field cut vertical bars as required.

EAST ABUTMENT
STRUCTURE NO. 084-0078

DESIGNED	JML
CHECKED	MSW
DRAWN	DJM
CHECKED	MGO/MSW

DATE 08/09/10

*Elevations are located at the front and back face of the hatched area.
**Alternate with #5 v58(E) bars. Place parallel to the girders.

BAR LAP	Length
#4	2'-1"
#5	2'-7"
#6	3'-1"

SHEET NO.	F.A.I. RTE.	SECTION	COUNTY	TOTAL SHEETS	SHEET NO.
B34	72	(84-3HB-5)BR	SANGAMON	84	70
42 SHEETS		SN 084-0078	CONTRACT NO. 72C70		
		FED. ROAD DIST. NO. 6	ILLINOIS FED. AID PROJECT		