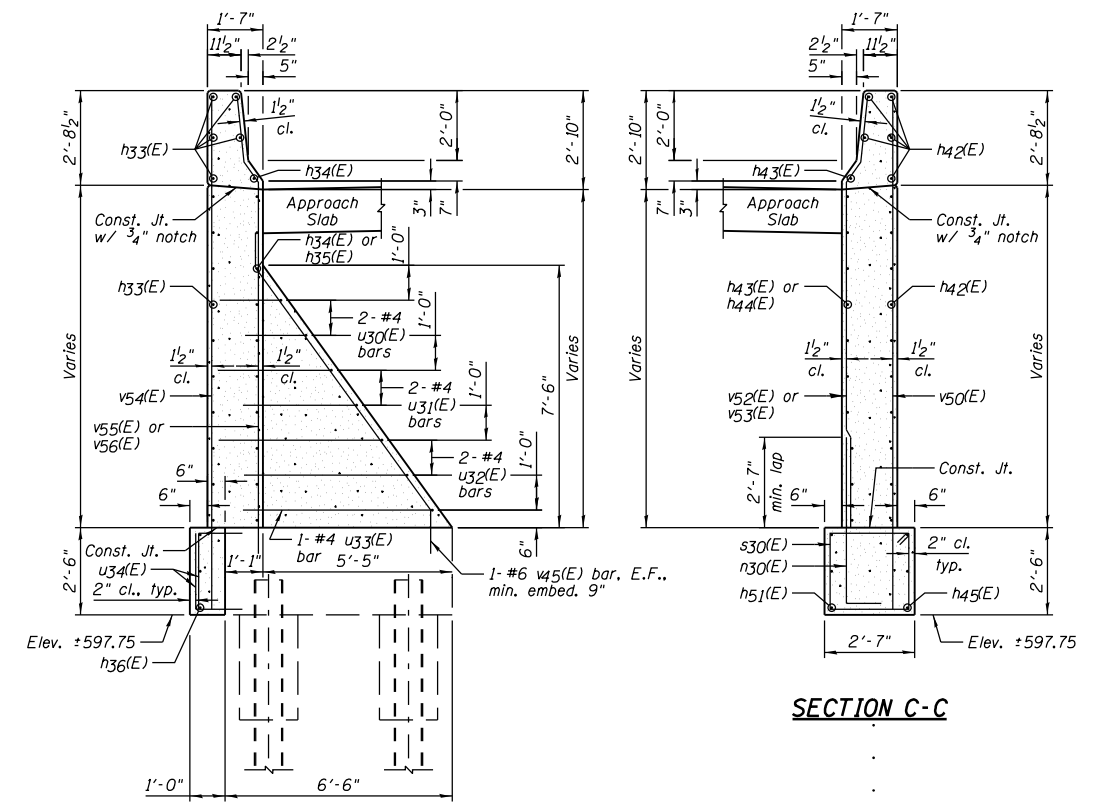
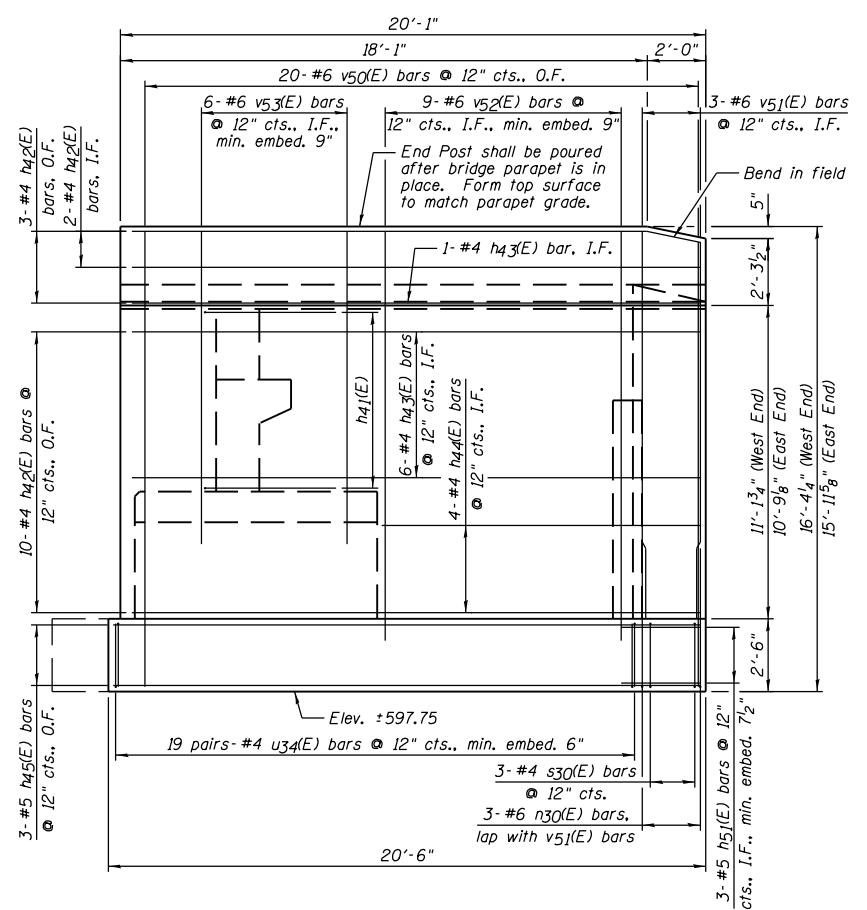
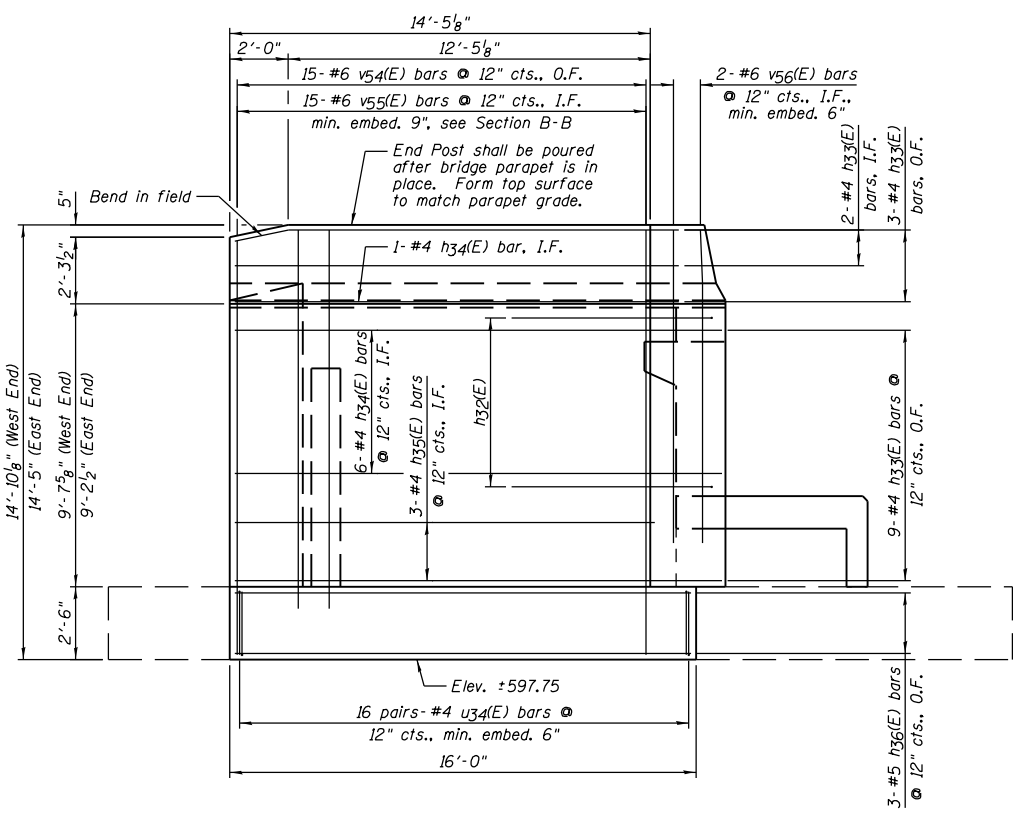
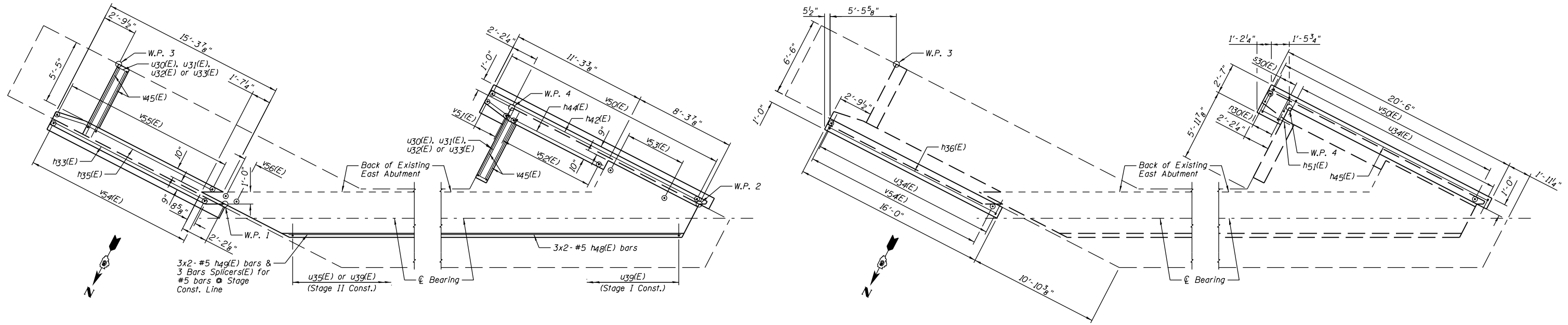


STATE OF ILLINOIS
DEPARTMENT OF TRANSPORTATION



DESIGNED	JML
CHECKED	MSW
DRAWN	DJM
CHECKED	MGO/MSW
DATE	08/09/10

NOTES:

- See Sheet B34 for location of Sections B-B & C-C.
- Drill & epoxy grout h51(E), u34(E), u35(E), u39(E), v45(E), v52(E), v53(E), v55(E) & v56(E) bars in appropriate drilled holes according to Section 584 of the Standard Specifications. The type of epoxy grout shall be approved by the Engineer.
- See Sheet B36 for Bill of Material.
- I.F. denotes Inside Face & O.F. denotes Outside Face.
- Field cut vertical bars as required.

**EAST ABUTMENT
STRUCTURE NO. 084-0078**

SHEET NO. B35	F.A.I. RTE.	SECTION	COUNTY	TOTAL SHEETS	SHEET NO.
	72	(84-3HB-5)BR	SANGAMON	84	71
42 SHEETS	SN 084-0078		CONTRACT NO. 72C70		
FED. ROAD DIST. NO. 6		ILLINOIS FED. AID PROJECT			