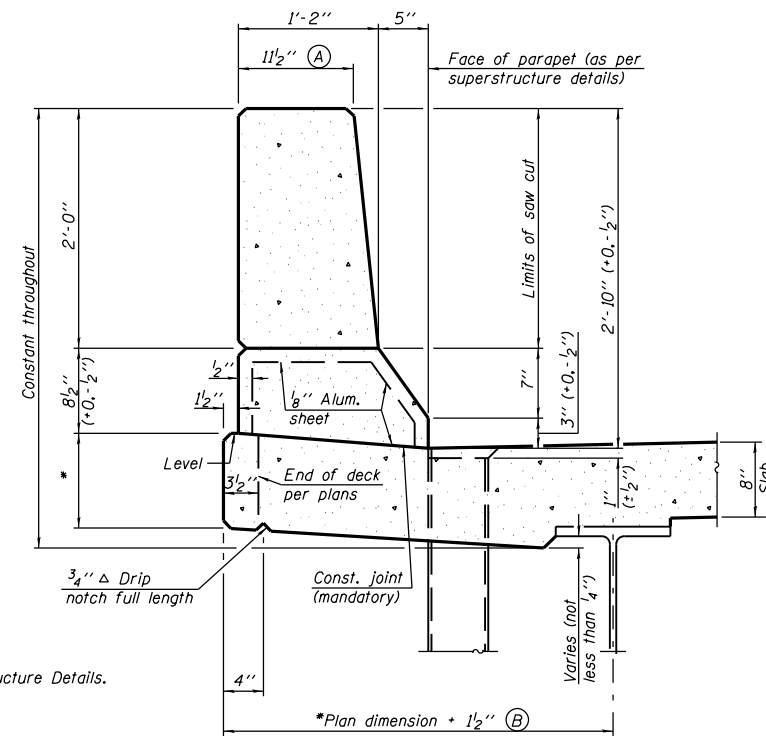
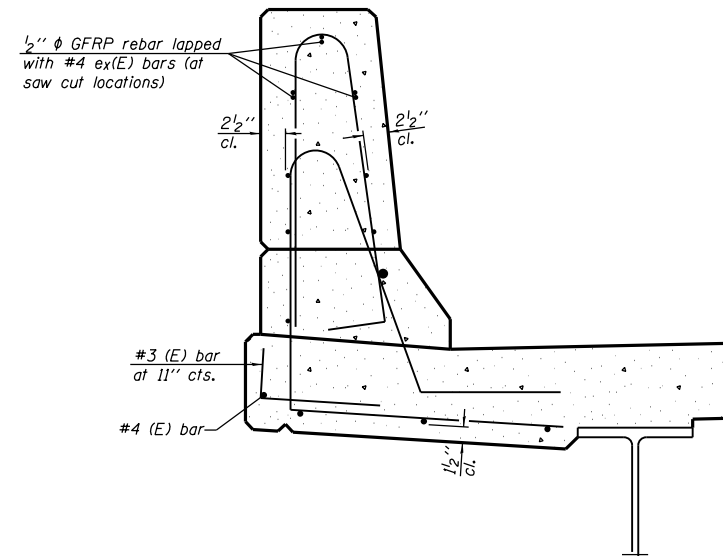


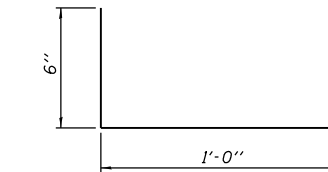
STATE OF ILLINOIS  
DEPARTMENT OF TRANSPORTATION



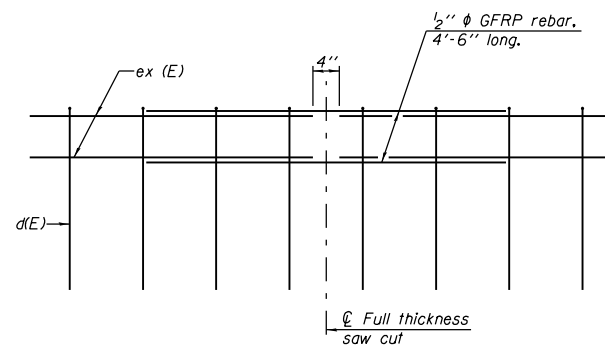
**SECTION**  
(Showing dimensions)



**SECTION**  
(Showing reinforcement clearances for slip forming and additional reinforcement bars)



**#3 (E) BAR**



**GFRP REBAR STIFFENING DETAIL**  
(Place as shown in parapet section at each parapet joint location.)

**GENERAL NOTES**

All dimensions shall remain the same as shown on superstructure details, except dimensions A and B which are to be revised as shown to provide additional clearance. Additional concrete needed to revise dimension A and B = 0.0165 cu. yds./ft. of parapet.  
Place aluminum sheet in curb portion at and near piers. Full thickness saw cut at all joint locations in lieu of cork joint filler.  
Steel superstructure shown. Other superstructure types similar.

DESIGNED	JML
CHECKED	MSW
DRAWN	DJM
CHECKED	MGO/MSW

DATE 08/09/10

SFP-34

7-1-10

FARNSWORTH GROUP, INC.

CONSULTING ENGINEERS - 2709 MCGRAW DRIVE BLOOMINGTON, ILLINOIS 61704 (309) 663-8435 / (309) 663-1571 FAX

**CONCRETE PARAPET  
SLIPFORMING OPTION  
STRUCTURE NO. 084-0078**

SHEET NO. B42	F.A.I. RTE.	SECTION	COUNTY	TOTAL SHEETS	SHEET NO.
	72	(84-3HB-5)BR	SANGAMON	84	78
42 SHEETS	SN 084-0078		CONTRACT NO. 72C70		
FED. ROAD DIST. NO. 6		ILLINOIS	FED. AID PROJECT		

24-8181