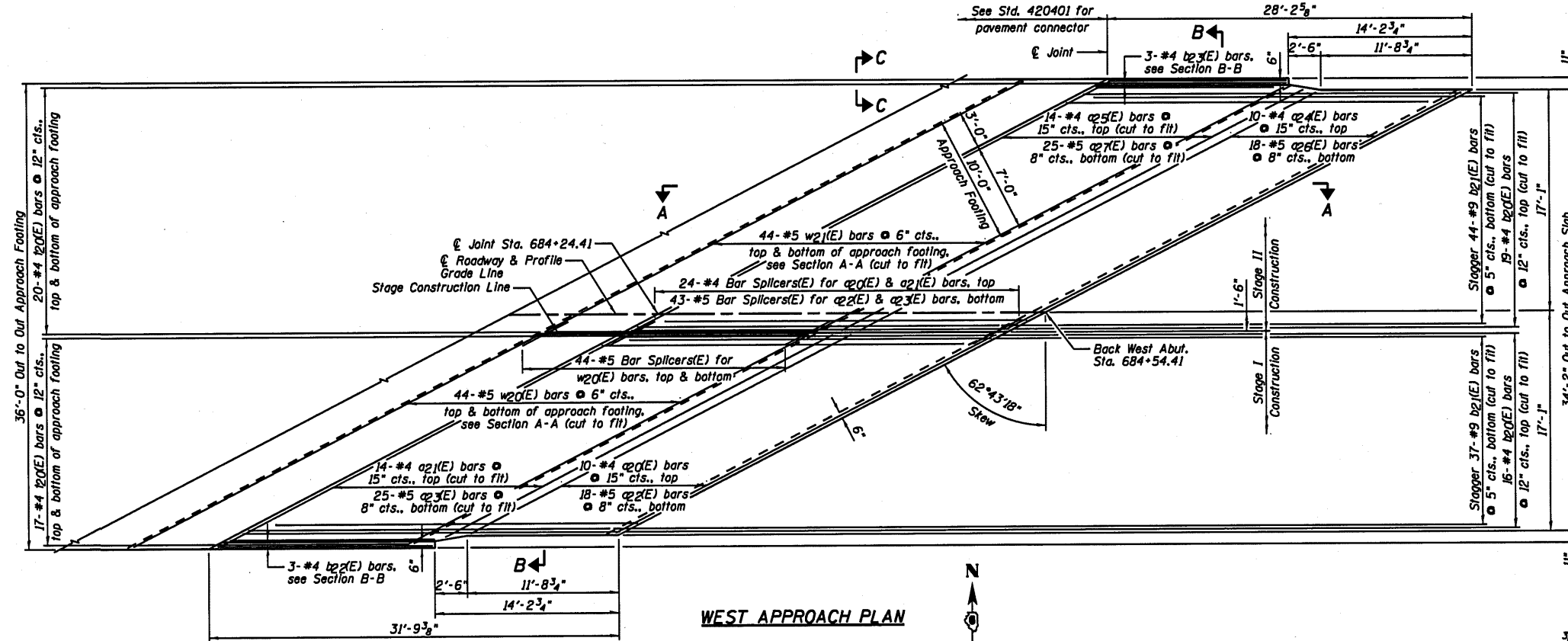


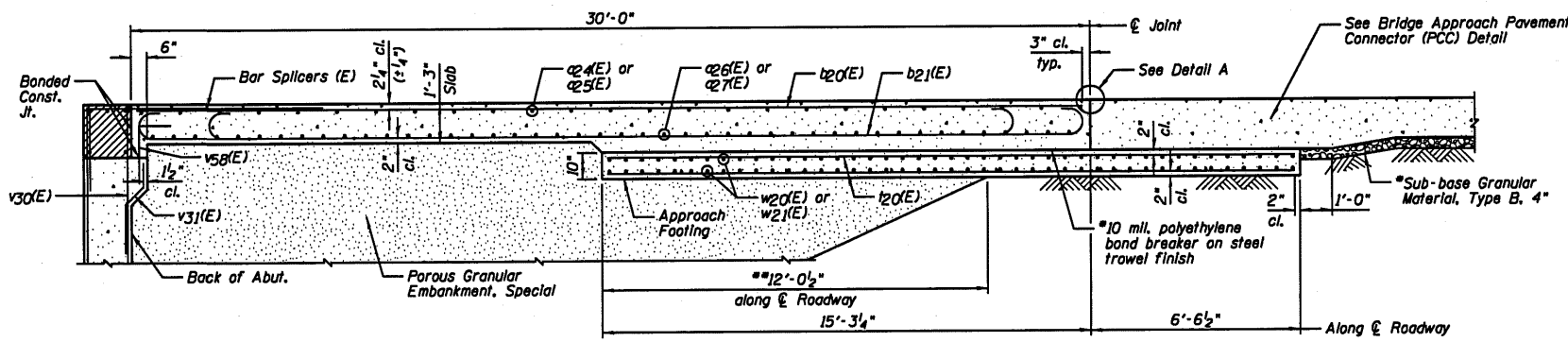
STATE OF ILLINOIS  
DEPARTMENT OF TRANSPORTATION



WEST APPROACH SLAB  
BILL OF MATERIAL

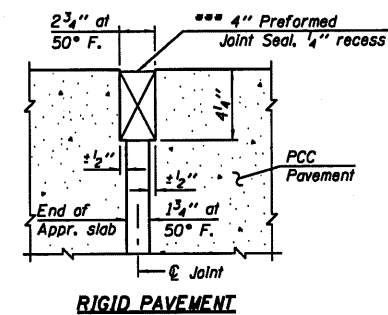
Bar	No.	Size	Length	Shape
a2(E)	10	#4	33'-3"	
a2(E)	14	#4	35'-8"	
a2(E)	18	#5	33'-3"	
a2(E)	25	#5	35'-3"	
a2(E)	10	#4	39'-10"	
a2(E)	14	#4	42'-3"	
a2(E)	18	#5	39'-10"	
a2(E)	25	#5	41'-10"	
b2(E)	35	#4	28'-11"	
b2(E)	81	#9	29'-9"	
b2(E)	3	#4	16'-6"	
b2(E)	3	#4	13'-10"	
t2(E)	74	#4	21'-5"	
w2(E)	88	#5	35'-3"	
w2(E)	88	#5	39'-8"	
Item	Unit	Quantity		
Concrete Structures	Cu. Yd.	24.2		
Concrete Superstructure	Cu. Yd.	55.9		
Bridge Deck Grooving	Sq. Yd.	108		
Protective Coat	Sq. Yd.	116		
Reinforcement Bars, Epoxy Coated	Pound	21,460		
Bar Splicers	Each	155		

WEST APPROACH PLAN



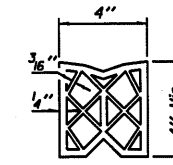
SECTION A-A

\*Cost Included with Bridge Approach Pavement Connector (PCC) Detail.  
\*\*Compact Porous Granular Embankment, Special in this area.  
\*\*\*Cost Included with Porous Granular Embankment, Special.

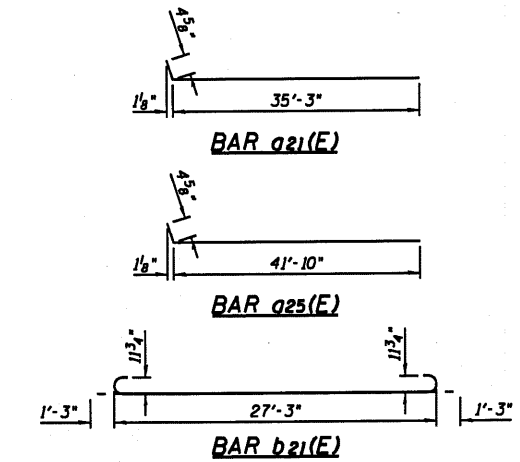


DETAIL A

\*\*\* Cost Included with Concrete Superstructure.

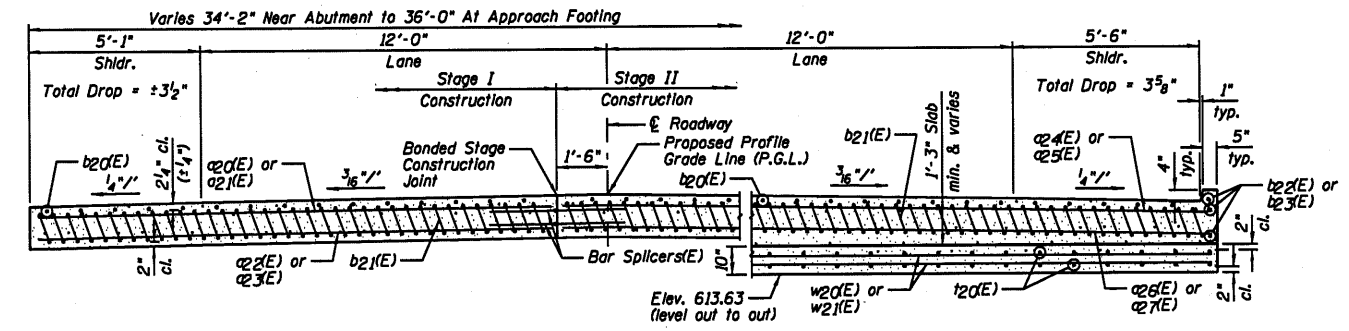


PREFORMED JOINT SEAL



VIEW C-C

Angle Preformed Joint Seal at 45° at curbs when req'd for drainage.



NEAR ABUTMENT

SECTION B-B

AT APPROACH FOOTING

NOTES:

- 1.) a2(E) thru a27(E), w2(E) and w21(E) bar spacings measured along  $\epsilon$  Roadway.
- 2.) Tilt #9 b21(E) bars as required to maintain clearance.
- 3.) Approach Slab shall be paid for as Concrete Superstructure.
- 4.) Approach Footing concrete shall be paid for as Concrete Structures.
- 5.) Reinforcement shall be paid for as Reinforcement Bars, Epoxy Coated.
- 6.) For v30(E) & v31(E) bar details, see Sheet B32.
- 7.) The Approach Footing maximum applied service bearing pressure (Omax) = 2.0 ksf.
- 8.) See Sheet B41 for Bar Splicer Details.
- 9.) Cost of excavation for Approach Footing included with Concrete Structures.
- 10.) For Porous Granular Embankment, Special and drainage treatment details, see Sheet B2.
- 11.) Hatched area to be poured after superstructure false work has been removed.

WEST BRIDGE APPROACH  
SLAB DETAILS  
STRUCTURE NO. 084-0078

DESIGNED JML
CHECKED MSW
DRAWN DJM
CHECKED MGO/MSW

DATE 08/09/10

SHEET NO. B17	F.A.I. RTE.	SECTION	COUNTY	TOTAL SHEETS	SHEET NO.
	72	(84-3HB-5)BR	SANGAMON	84	53
42 SHEETS	SN 084-0078		CONTRACT NO. 72C70		
FED. ROAD DIST. NO. 6 ILLINOIS FED. AID PROJECT					

FARNSWORTH GROUP, INC.

CONSULTING ENGINEERS - 2709 MCGRAW DRIVE BLOOMINGTON, ILLINOIS 61704 (309) 663-8435 / (309) 663-1571 FAX

24-8181