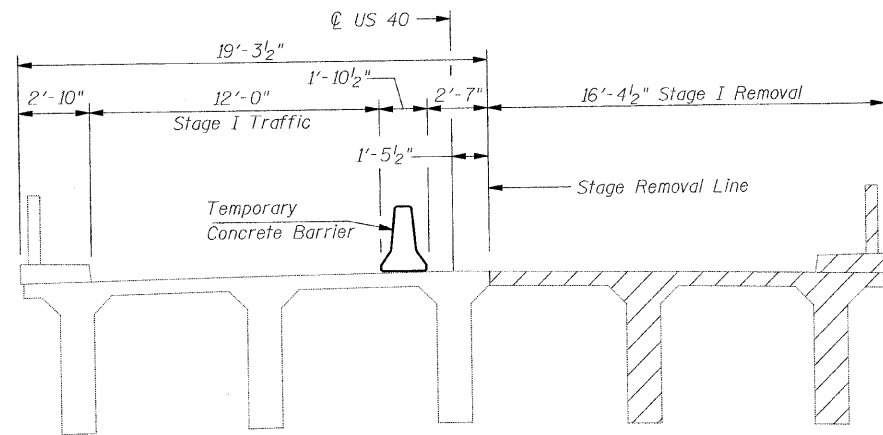
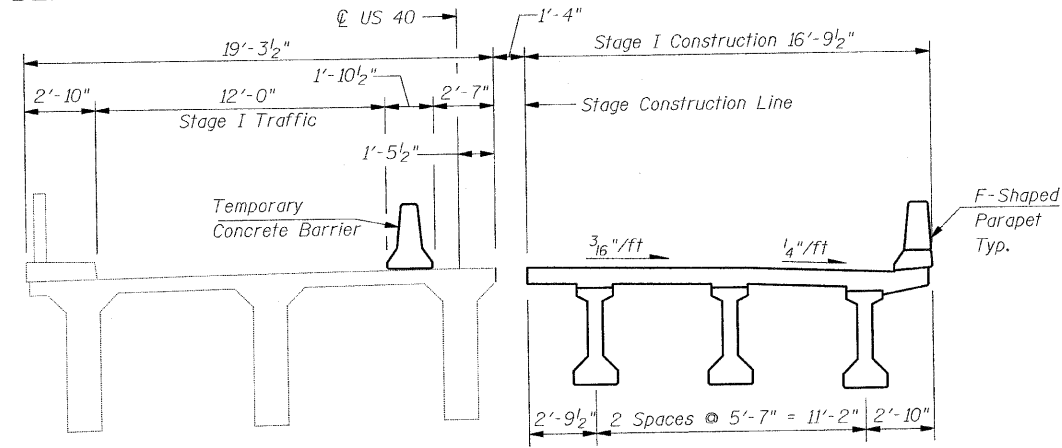


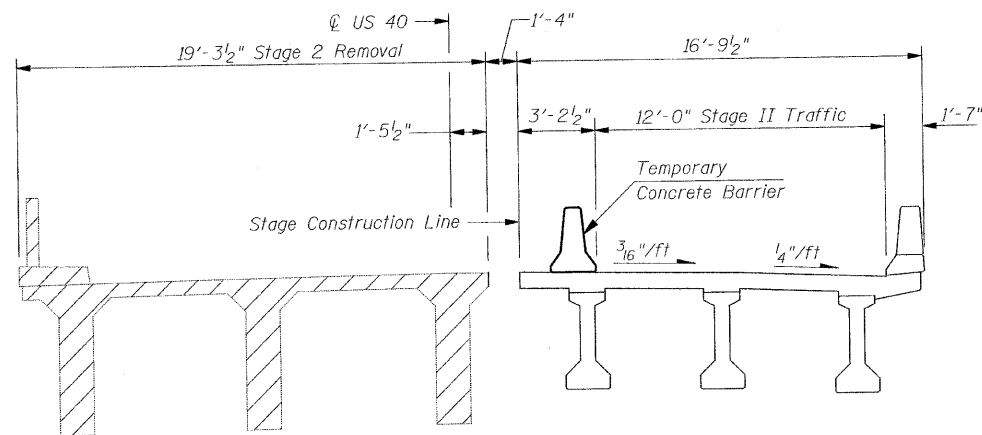
STATE OF ILLINOIS  
DEPARTMENT OF TRANSPORTATION



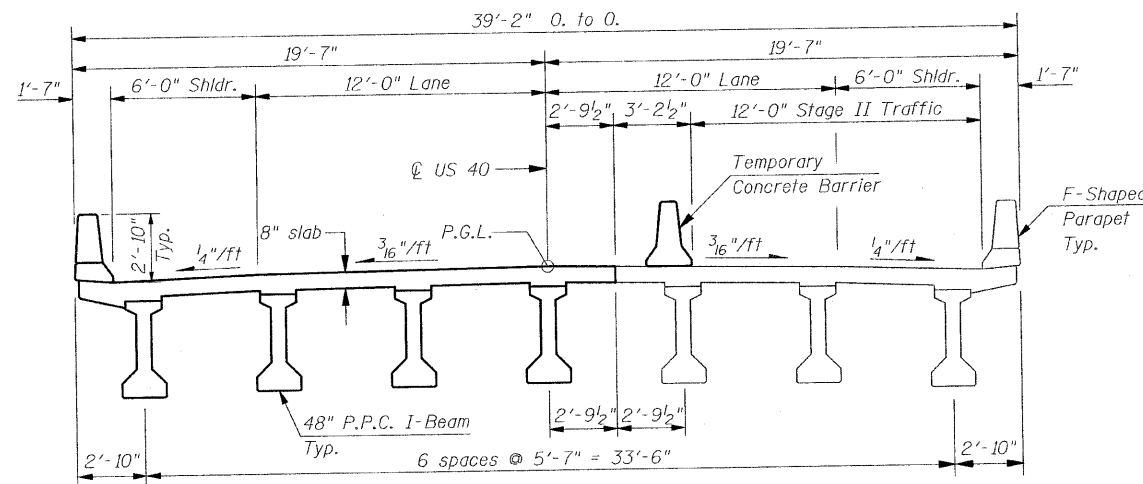
STAGE 1 REMOVAL - CROSS SECTION  
(Looking East)



STAGE 1 CONSTRUCTION - CROSS SECTION  
(Looking East)



STAGE 2 REMOVAL - CROSS SECTION  
(Looking East)



STAGE 2 CONSTRUCTION - CROSS SECTION  
(Looking East)

INDEX OF SHEETS

1. GENERAL PLAN & ELEVATION
2. GENERAL DATA
3. GENERAL DATA & FOOTING LAYOUT
- 3A. TEMPORARY SHORING
4. DECK ELEVATION LAYOUT
- 5.-8. DECK ELEVATIONS
- 9.-10. APPROACH SLAB ELEVATIONS
11. DECK PLAN
12. PARAPET DETAILS
13. DIAPHRAGM DETAILS
14. BRIDGE APPROACH SLAB DETAILS
15. BRIDGE APPROACH SLAB DETAILS
16. FRAMING PLAN
17. 48" P.P.C. I-BEAM, SPANS 1 & 3
18. 48" P.P.C. I-BEAM DETAILS, SPANS 1 & 3
19. 48" P.P.C. I-BEAM, SPAN 2
20. 48" P.P.C. I-BEAM DETAILS, SPAN 2
21. WEST ABUTMENT
22. EAST ABUTMENT
23. PIER 1 DETAILS
24. PIER 2 DETAILS
25. HP PILE DETAILS
26. BAR SPLICER ASSEMBLY DETAILS
27. TEMPORARY CONCRETE BARRIER FOR STAGE CONSTRUCTION
- 28.-29. SOIL BORINGS

TOTAL BILL OF MATERIAL

ITEM	UNIT	SUPER	SUB	TOTAL
POROUS GRANULAR EMBANKMENT, SPECIAL	CU YD		171.0	171.0
STONE RIPRAP, CLASS A5	SQ YD		1,629	1,629
FILTER FABRIC	SQ YD		1,629	1,629
PROTECTIVE COAT	SQ YD		1,221	1,221
REMOVAL OF EXISTING STRUCTURES	EACH			1
STRUCTURE EXCAVATION	CU YD		442.0	442.0
CONCRETE STRUCTURES	CU YD		338.3	338.3
CONCRETE SUPERSTRUCTURE	CU YD	433.3		433.3
BRIDGE DECK GROOVING	SQ YD	1027		1,027.0
CONCRETE ENCASEMENT	CU YD		7.1	7.1
FURNISHING AND ERECTING PRECAST PRESTRESSED CONCRETE I-BEAMS, 48 IN.	FOOT	1,345.5		1,345.5
REINFORCEMENT BARS, EPOXY COATED	POUND	92,740	31,780	124,520
BAR SPLICERS	EACH	705	214	919
FURNISHING STEEL PILES HP10X42	FOOT		434	434
FURNISHING STEEL PILES HP14X102	FOOT		560	560
DRIVING PILES	FOOT		434	434
TEST PILE STEEL HP10X42	EACH		2	2
NAME PLATES	EACH	1		1
GEOCOMPOSITE WALL DRAIN	SQ YD		77	77
PIPE UNDERDRAINS FOR STRUCTURES 4"	FOOT		166	166
MECHANICAL SPLICERS	EACH		180	180
TEMPORARY SOIL RETENTION SYSTEM	SQ FT		792	792
UNDERWATER STRUCTURE EXCAVATION PROTECTION - LOCATION 1	EACH		1	1
UNDERWATER STRUCTURE EXCAVATION PROTECTION - LOCATION 2	EACH		1	1
SETTING PILES IN ROCK	EACH		14	14
STUD SHEAR CONNECTORS	EACH		240	240
TEMPORARY SHORING	EACH		1	1

GENERAL NOTES

- Reinforcement bars shall conform to the requirements of ASTM A 706 Gr 60. See Special Provisions.
- Reinforcement bars designated (E) shall be epoxy coated.
- Layout of slope protection system may be varied in the field to suit ground conditions as directed by the Engineer.
- Slipforming of parapets is not allowed.
- A cantilevered sheet piling design does not appear feasible and additional members or other retention systems may be necessary. The Contractor shall submit a temporary soil retention system design including plan details and calculations for review and acceptance by the Engineer.

Notes:

Hatched area indicates Removal of Existing Structures. Removal of existing bridge rail is included with Removal of Existing Structures.

The Stage Removal Line shown is for the existing superstructure, piers and West Abutment. The Stage Removal Line for the existing East Abutment differs. See Sheet 3A of 29.

See sheet 27 of 29 for details of Temporary Concrete Barrier. See Roadway Plans for quantity and location.

GENERAL DATA  
STRUCTURE NO. 012-0073

SHEET NO.	F.A.S. RTE.	SECTION	COUNTY	TOTAL SHEETS	SHEET NO.
2 OF 29 SHEETS	1707	(BX-B)B-1	CLARK		//
			CONTRACT NO. 74169		
FED. ROAD DIST. NO. -		ILLINOIS	FED. AID PROJECT		

DESIGNED	SCD
CHECKED	DRB
DRAWN	THW
CHECKED	SCD



IE CONSULTANTS, INC.  
6420 SOUTH SIXTH STREET  
SPRINGFIELD, ILLINOIS 62712  
TEL. (217) 529-8027  
FAX (217) 529-4543  
IESPRINGFIELD@IE-CONSULTANTS.COM  
WWW.IE-CONSULTANTS.COM