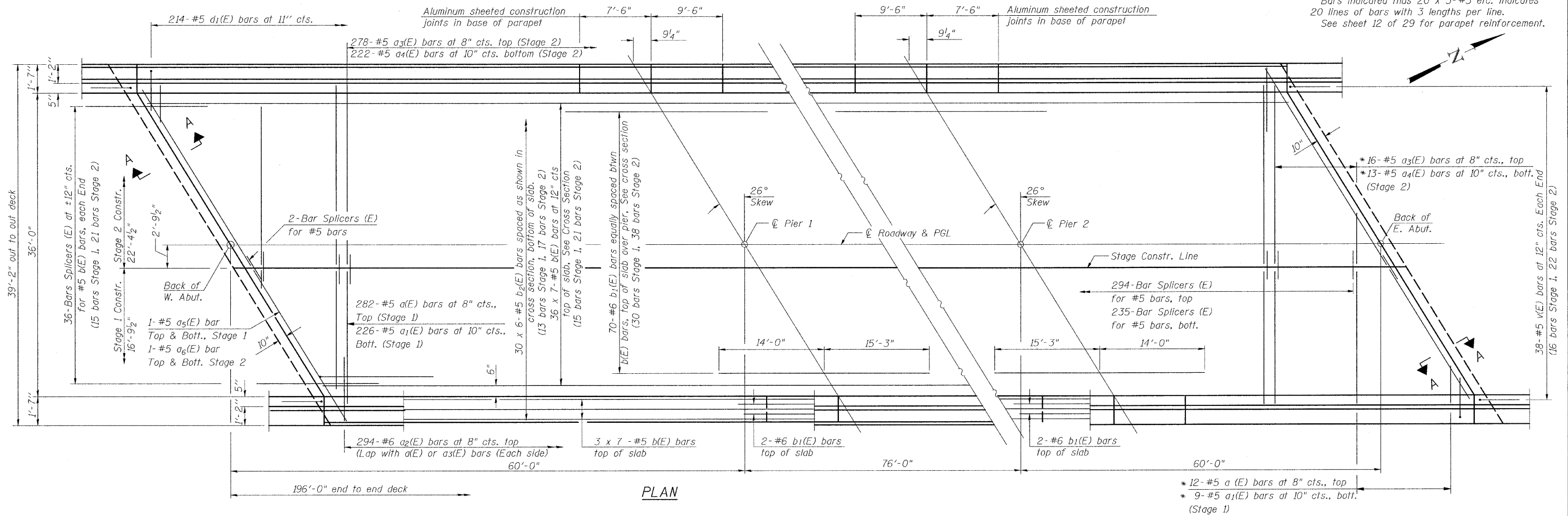


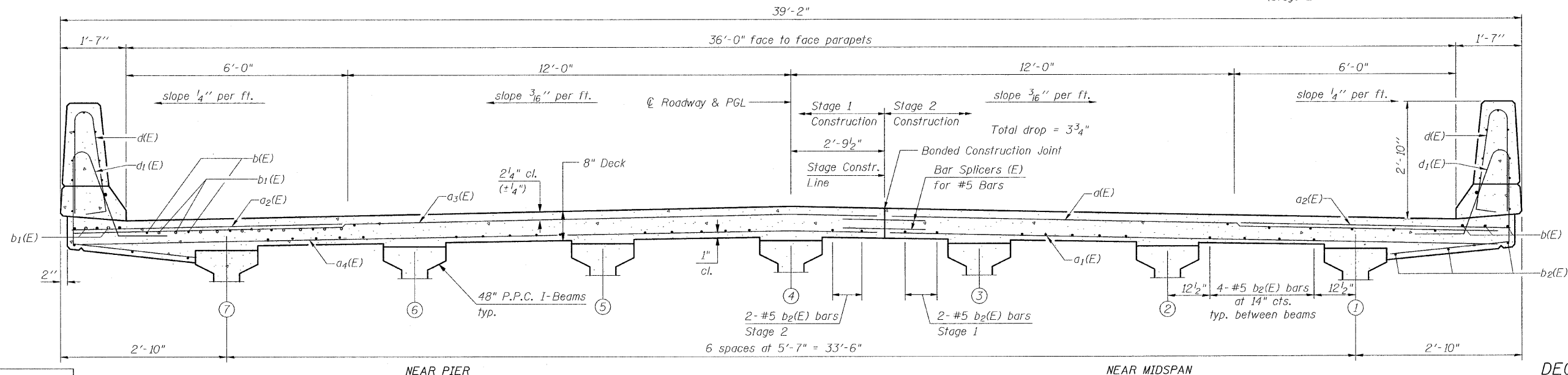
STATE OF ILLINOIS
DEPARTMENT OF TRANSPORTATION

* Order a (E), a₁(E), a₃(E) & a₄(E) bars full length. Cut to fit skew and use remainder of bars in opposite end.

Notes:
See sheet 12 of 29 for superstructure details and Bill of Material.
For Section A-A and diaphragm details see sheet 13 of 29.
Bars indicated thus 20 x 3-#5 etc. indicates 20 lines of bars with 3 lengths per line.
See sheet 12 of 29 for parapet reinforcement.



PLAN



CROSS SECTION
(Looking East)

DECK PLAN
STRUCTURE NO. 012-0073

DESIGNED	SCD
CHECKED	DRB
DRAWN	THW
CHECKED	SCD

ie consultants
IE CONSULTANTS, INC
6420 SOUTH SIXTH STREET
SPRINGFIELD, ILLINOIS 62712
TEL. (217) 529-8027
FAX (217) 529-4543
IESPRINGFIELD@IE-CONSULTANTS.COM
WWW.IE-CONSULTANTS.COM

SHEET NO. 11 OF 29 SHEETS	F.A.S. RTE.	SECTION	COUNTY	TOTAL SHEETS	SHEET NO.
	1707	(BX-B)B-1	CLARK	44	20
CONTRACT NO. 74169					
FED. ROAD DIST. NO. _ ILLINOIS FED. AID PROJECT					