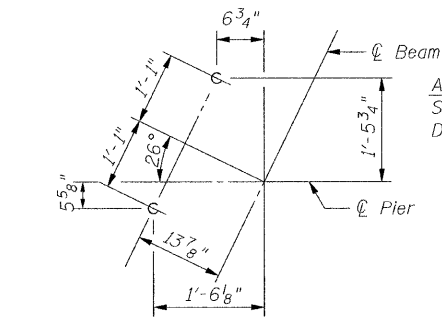


STATE OF ILLINOIS
DEPARTMENT OF TRANSPORTATION

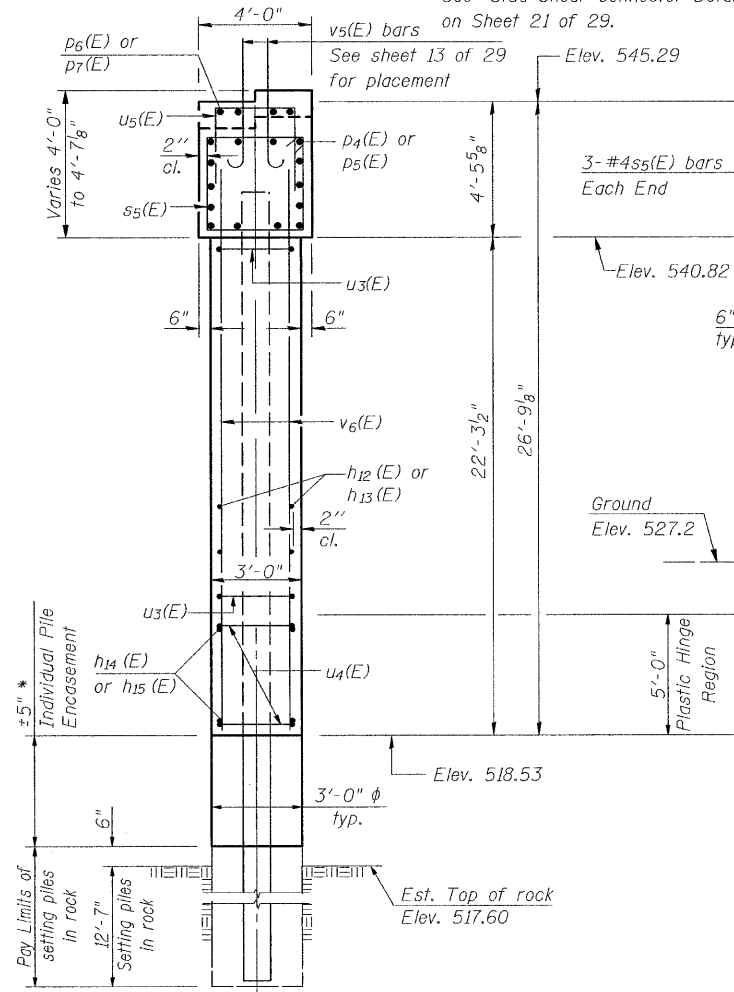


ANCHOR BOLT LAYOUT DETAIL

(Typical for beams 1 & 7 only)

Anchor Bolt Locations.
See Anchor Bolt layout
Detail, this sheet.

Stud Shear Connectors (typ.)
See "Stud Shear Connector Detail"
on Sheet 21 of 29.



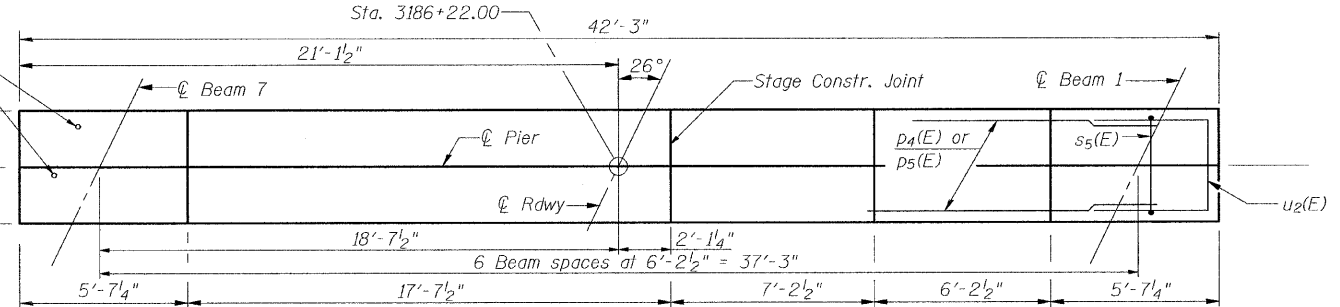
PILE DATA END VIEW

Type: HP 14x102
Nominal Required Bearing: Set in rock
Factored Resistance Available: 388 kips
Est. Length: 39
No. Production Piles: 7
No. Test Piles: 0
Est. Top of Rock Elev.: 517.60
Rock Socket Depth: 12.58 ft.
Rock Socket Dia.: 3.0 ft.

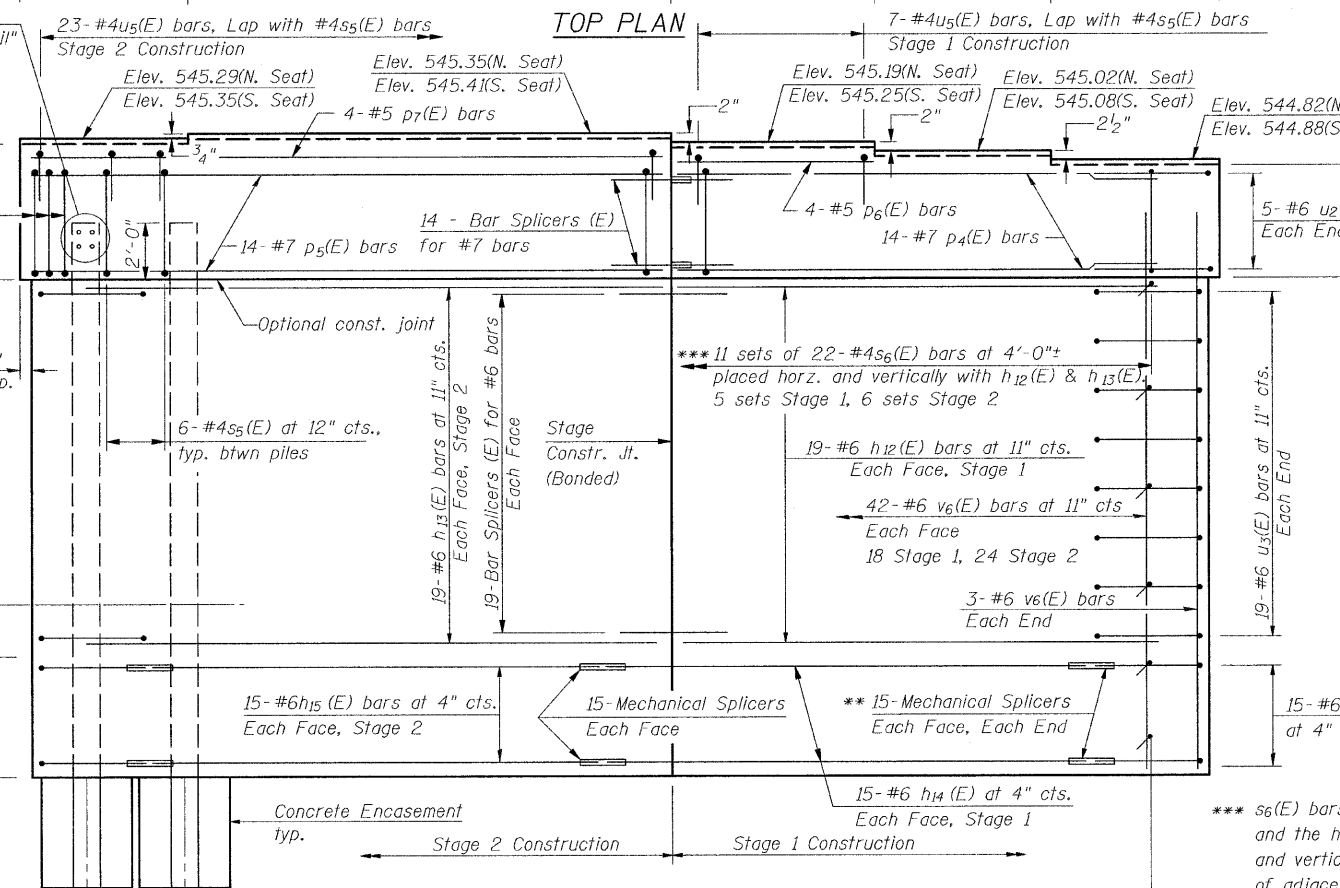
DESIGNED	SCD
CHECKED	DRB
DRAWN	THW
CHECKED	SCD



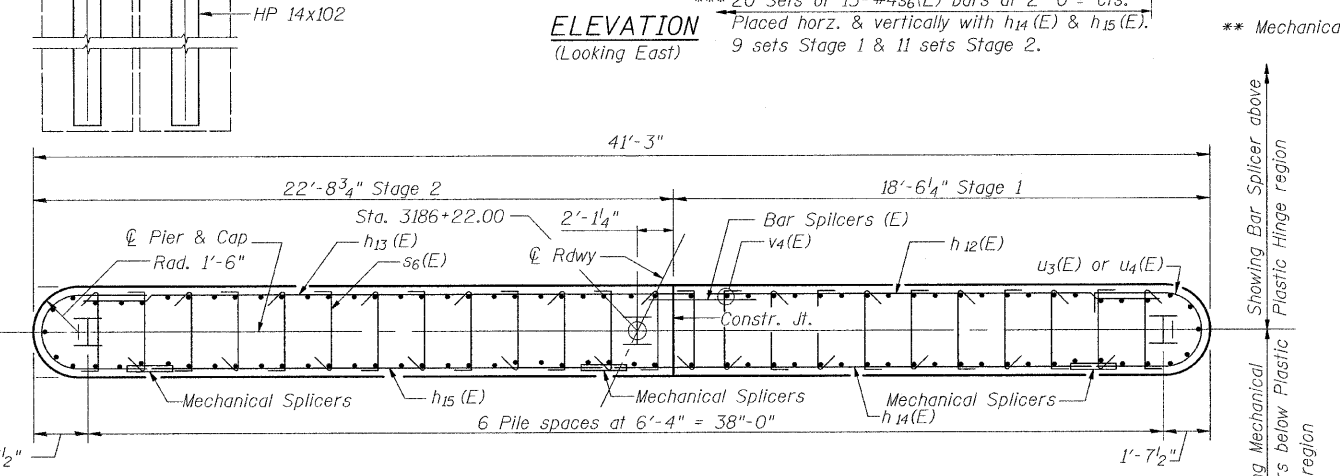
IE CONSULTANTS, INC.
6420 SOUTH SIXTH STREET
SPRINGFIELD, ILLINOIS 62712
TEL. (217) 529-8027
FAX (217) 529-4543
IESPRINGFIELD@IE-CONSULTANTS.COM
WWW.IE-CONSULTANTS.COM



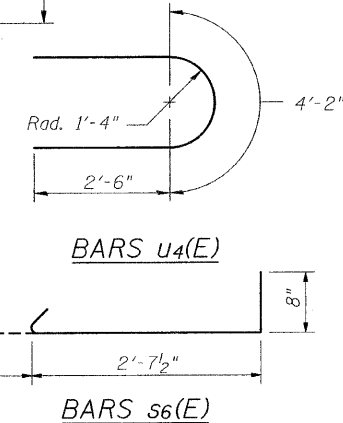
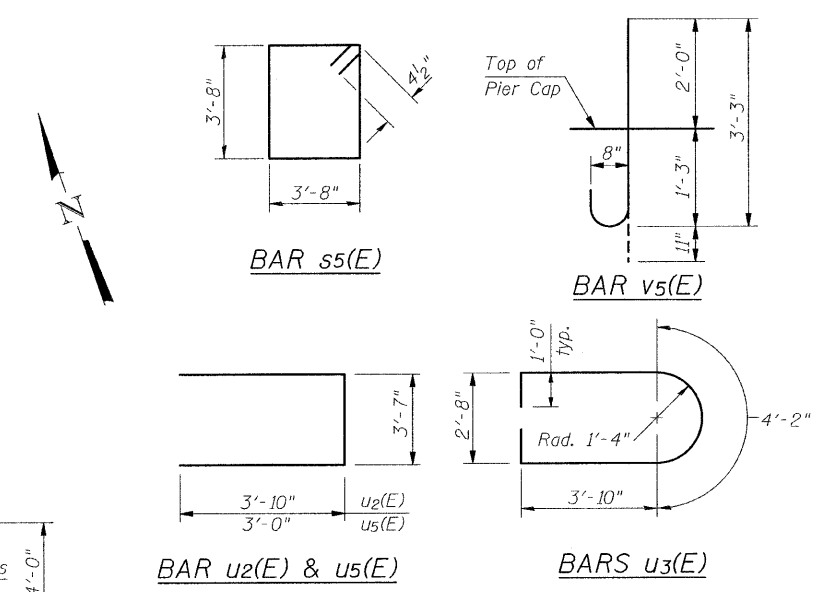
TOP PLAN



ELEVATION



FOOTING PLAN



BILL OF MATERIAL

Bar	No.	Size	Length	Shape
h12(E)	38	#6	17'-0"	—
h13(E)	38	#6	21'-3"	—
h14(E)	30	#6	16'-0"	—
h15(E)	30	#6	17'-2"	—
p4(E)	14	#7	18'-6"	—
p5(E)	14	#7	22'-8"	—
p6(E)	4	#5	6'-10"	—
p7(E)	4	#5	22'-8"	—
s5(E)	42	#4	15'-5"	□
s6(E)	542	#4	3'-8"	└┘
u2(E)	10	#6	11'-3"	U
u3(E)	38	#6	13'-10"	U
u4(E)	30	#6	9'-2"	U
u5(E)	30	#4	9'-7"	U
v5(E)	36	#8	4'-2"	—
v6(E)	90	#6	24'-9"	—
Structure Excavation		Cu. Yd.	102.0	
Concrete Structures		Cu. Yd.	128.1	
Reinforcement Bars, Epoxy Coated		Pound	12,050	
Furnishing Steel Piles, HP 14x102		Foot	273	
Setting Piles in Rock		Each	7	
Concrete Encasement		Cu. Yd.	0.8	
Underwater Structure Excavation Protection Location 2		Each	1	
Mechanical Splicers		Each	90	
Bar Splicers		Each	52	
Stud Shear Connectors		Each	56	

*** s6(E) bars shall be located at bar grid intersections, and the hooks of all ties shall enclose both horizontal and vertical bars at the intersections. The 90° hooks of adjacent s6(E) bars shall be alternated end-for-end.

** Mechanical Splicer or Shop Weld Splice per AWS D1.4.

Min. Bar Lap

#4	2'-7"
#6	3'-10"

Notes:
Space reinforcement in cap to miss anchor bolts.
Pour steps monolithically with cap.
For details of piles, see sheet 25 of 29.
If a portion of the pier wall or concrete encasement is under water, reinforcement may be placed underwater into forms. Concrete shall be tremied according to Article 503.08 of the Standard Specifications to an elevation of 1'-0" above the water line at the time of construction.

PIER 2 DETAILS
S.N. 012-0073

SHEET NO. 24 OF 29 SHEETS	F.A.S. RTE.	SECTION	COUNTY	TOTAL SHEETS	SHEET NO.
	1707	(BX)-B)-1	CLARK	44	33
CONTRACT NO. 74169					
FED. ROAD DIST. NO. _ ILLINOIS FED. AID PROJECT					