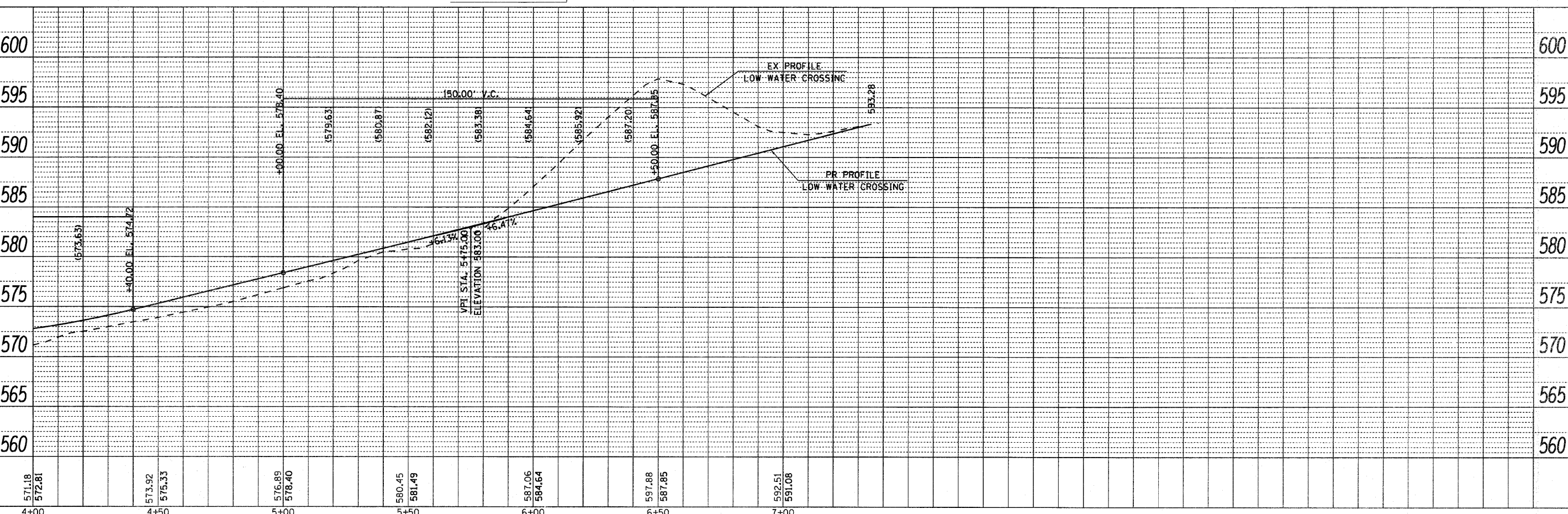
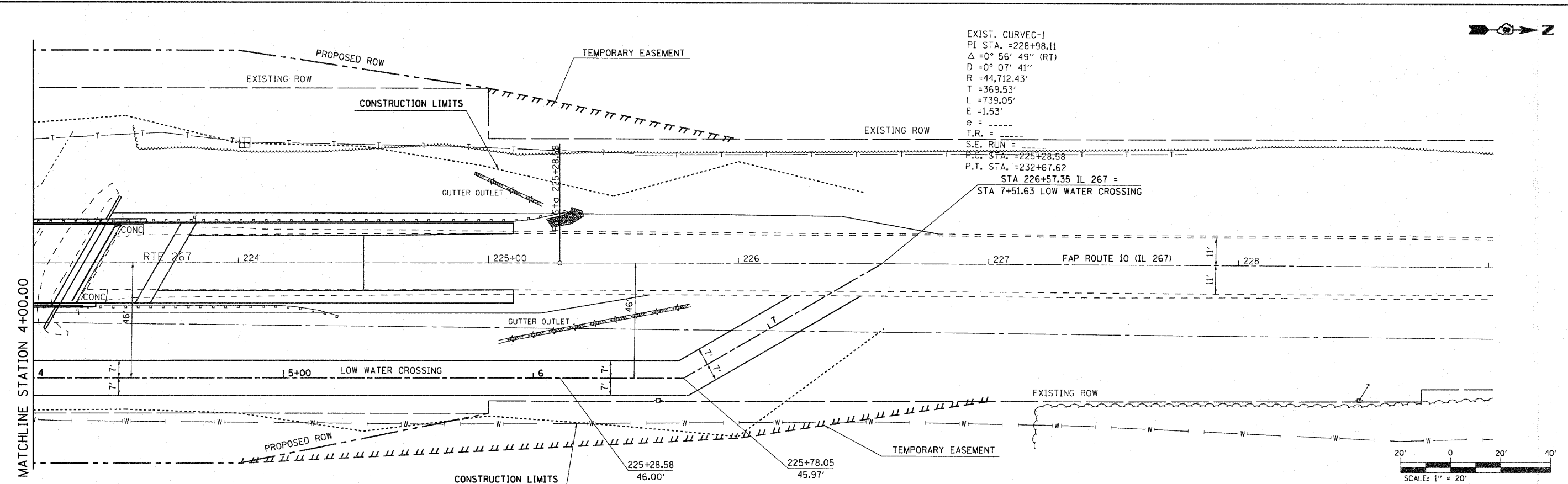




EXIST. CURVEC-1
 PI STA. =228+98.11
 Δ =0° 56' 49" (RT)
 D =0° 07' 41"
 R =44,712.43'
 T =369.53'
 L =739.05'
 E =1.53'
 e = -----
 T.R. = -----
 S.E. RUN = -----

P.C. STA. =225+26.58
 P.T. STA. =232+67.62
 STA 226+57.35 IL 267 =
 STA 7+51.63 LOW WATER CROSSING



FILE NAME =	USER NAME = #USER#	DESIGNED -	REVISED -	STATE OF ILLINOIS DEPARTMENT OF TRANSPORTATION	PLAN PROFILE SHEET, LOW WATER CROSSING	SCALE: 1" = 20'	SHEET NO. 4 OF 4 SHEETS	STA. TO STA.	F.A.P. RTE.	SECTION	COUNTY	TOTAL SHEETS	SHEET NO.
FILE#		DRAWN -	REVISED -						10	3B-1	GREENE	59	12
		CHECKED -	REVISED -						CONTRACT NO. 76C15				
		DATE -	REVISED -						ILLINOIS FED. AID PROJECT				

DATE	
BY	
PLAN	
NO. BOOK	
CHECKED	
NO.	
DATE	
BY	
FILE	
NO.	
DATE	
BY	
FILE	
NO.	
DATE	
BY	

DATE	
BY	
FILE	
NO.	
DATE	
BY	
FILE	
NO.	
DATE	
BY	
FILE	
NO.	
DATE	
BY	