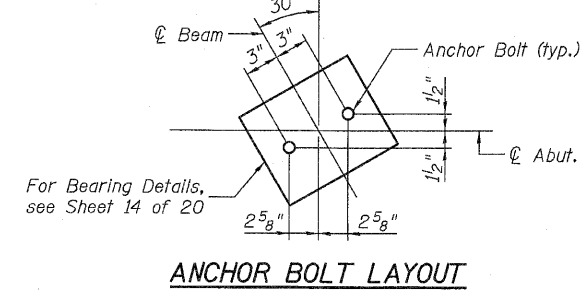
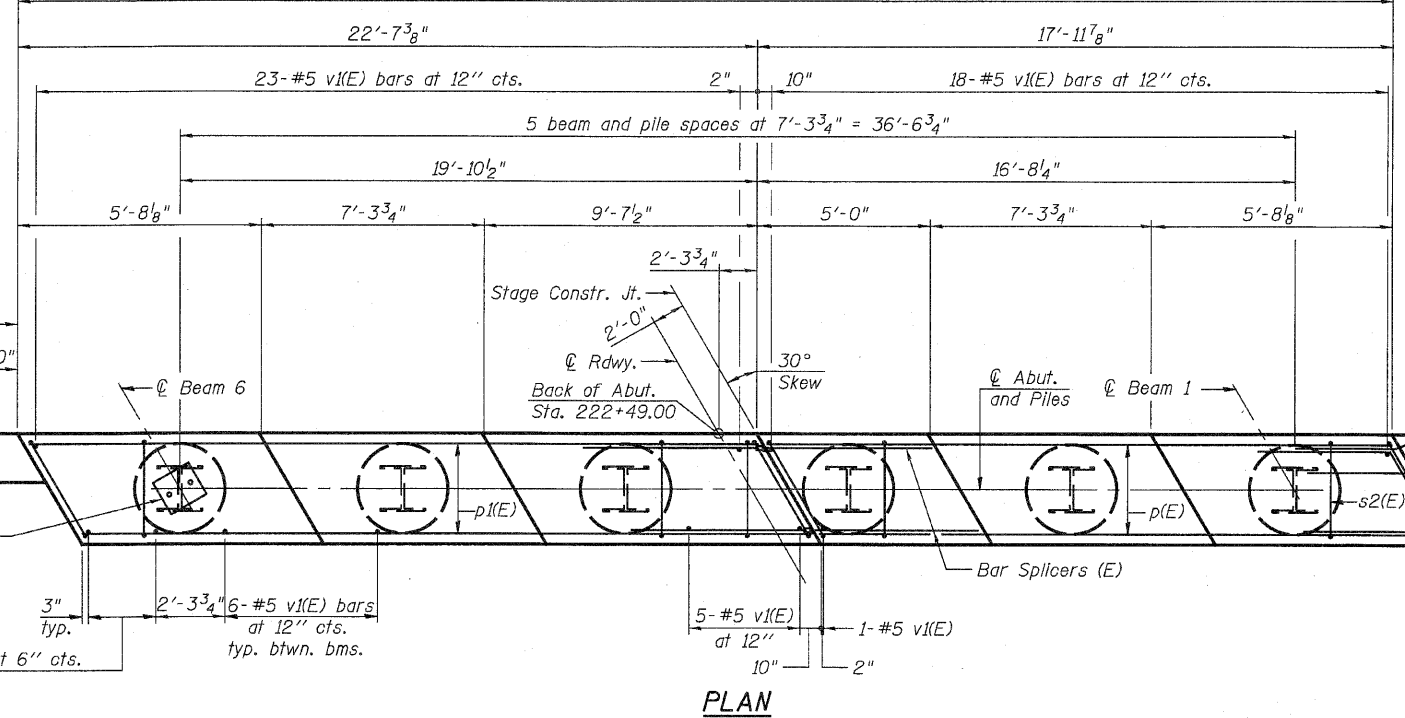
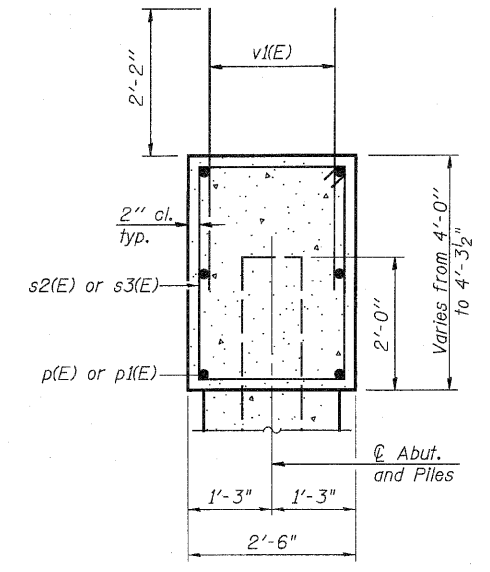
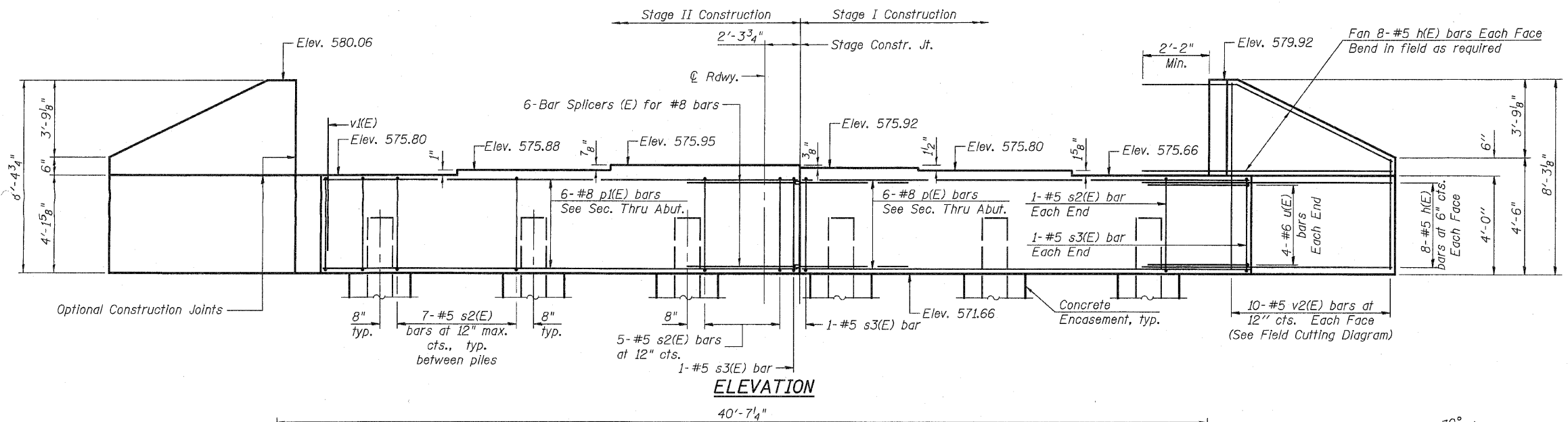


Notes:  
Pour steps monolithically with cap.

STATE OF ILLINOIS  
DEPARTMENT OF TRANSPORTATION



**BILL OF MATERIAL**

Bar	No.	Size	Length	Shape
h(E)	64	#5	12'-0"	—
p(E)	6	#8	17'-8"	—
p1(E)	6	#8	22'-3"	—
s2(E)	35	#5	12'-7"	□
s3(E)	4	#5	13'-3"	□
u(E)	8	#6	7'-7"	∟
v1(E)	75	#5	4'-4"	—
v2(E)	20	#5	12'-2"	—

Structure Excavation	Cu. Yd.	76
Concrete Structures	Cu. Yd.	20.6
Reinforcement Bars, Epoxy Coated	Pound	2640
Furnishing Steel Piles HP12x53	Foot	160
Driving Piles	Foot	160
Test Pile Steel HP12x53	Each	1
Pile Shoes	Each	6
Concrete Encasement	Cu. Yd.	2.1

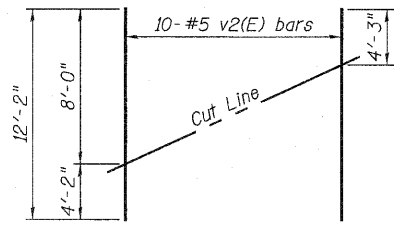
For details of Bar Splicers, see sheet 18 of 20.  
For details of piles and Concrete Encasement, see sheet 17 of 20.

**PILE DATA**

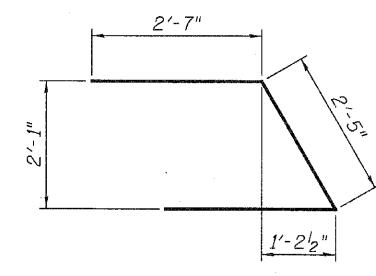
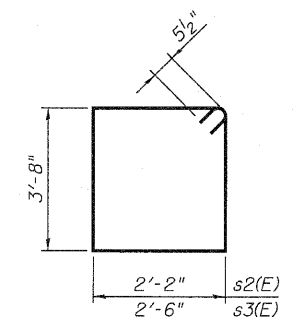
Type: Steel-HP 12x53 with Pile Shoes  
Nominal Required Bearing: 400 kips  
Factored Resistance Available: 200 kips  
Est. Length: 32'  
No. Production Piles: 5  
No. Test Piles: 1

<b>Johnson, Depp &amp; Quisenberry</b> CONSULTING ENGINEERS Springfield, Illinois	
DESIGNED: JDQ	DRAWN: SJS
CHECKED: DCD	CHECKED: DCD

AI-L 11-1-09



Order v2(E) full length. Cut as shown and use remainder of bars in opposite wing.



**SOUTH ABUTMENT  
STRUCTURE NO. 031-0044**

SHEET 15 OF 20	F.A.P. RTE. 10	SECTION 3B-1	COUNTY GREENE	TOTAL SHEETS 59	SHEET NO. 40
	STA. 222+94.00		CONTRACT NO. 76C15		
FED. ROAD DIST. NO. ILLINOIS FED. AID PROJECT					