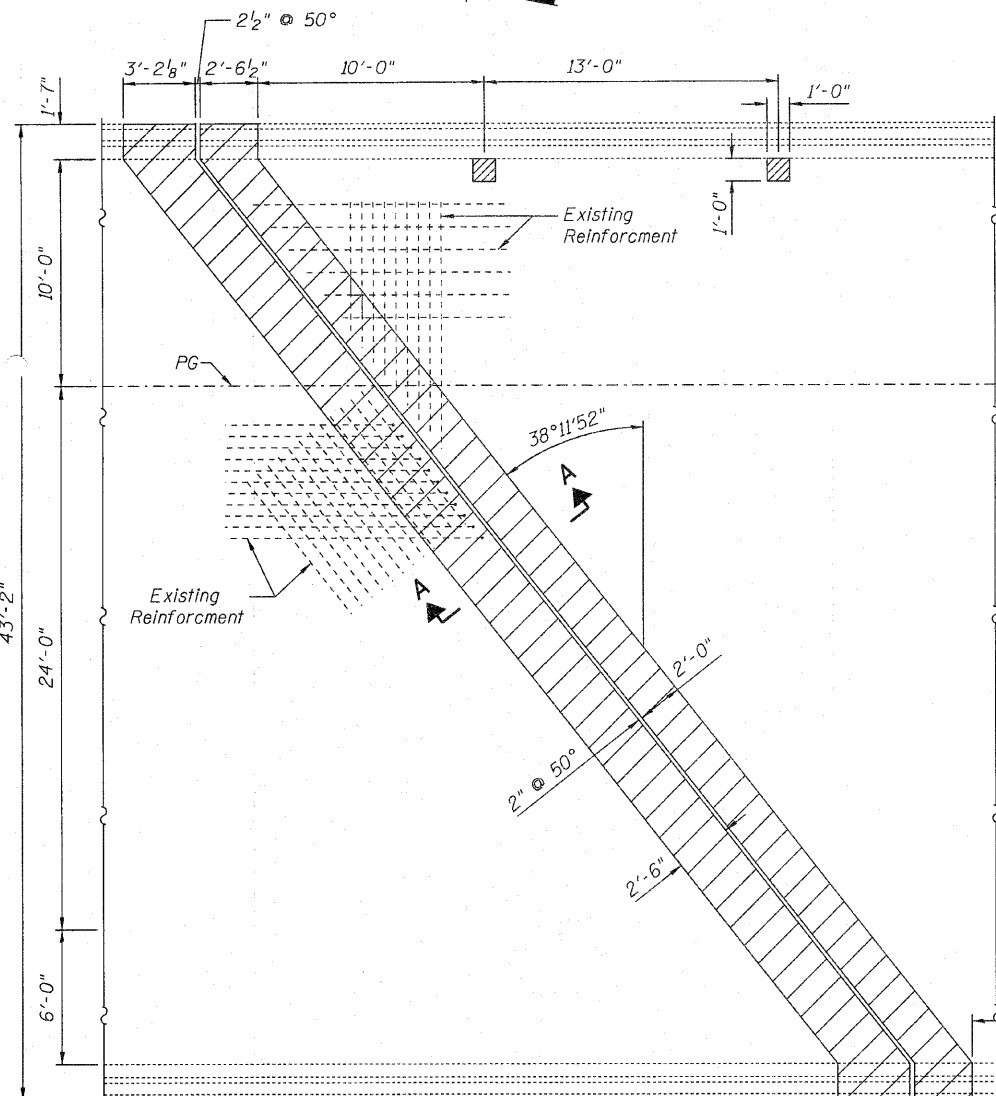
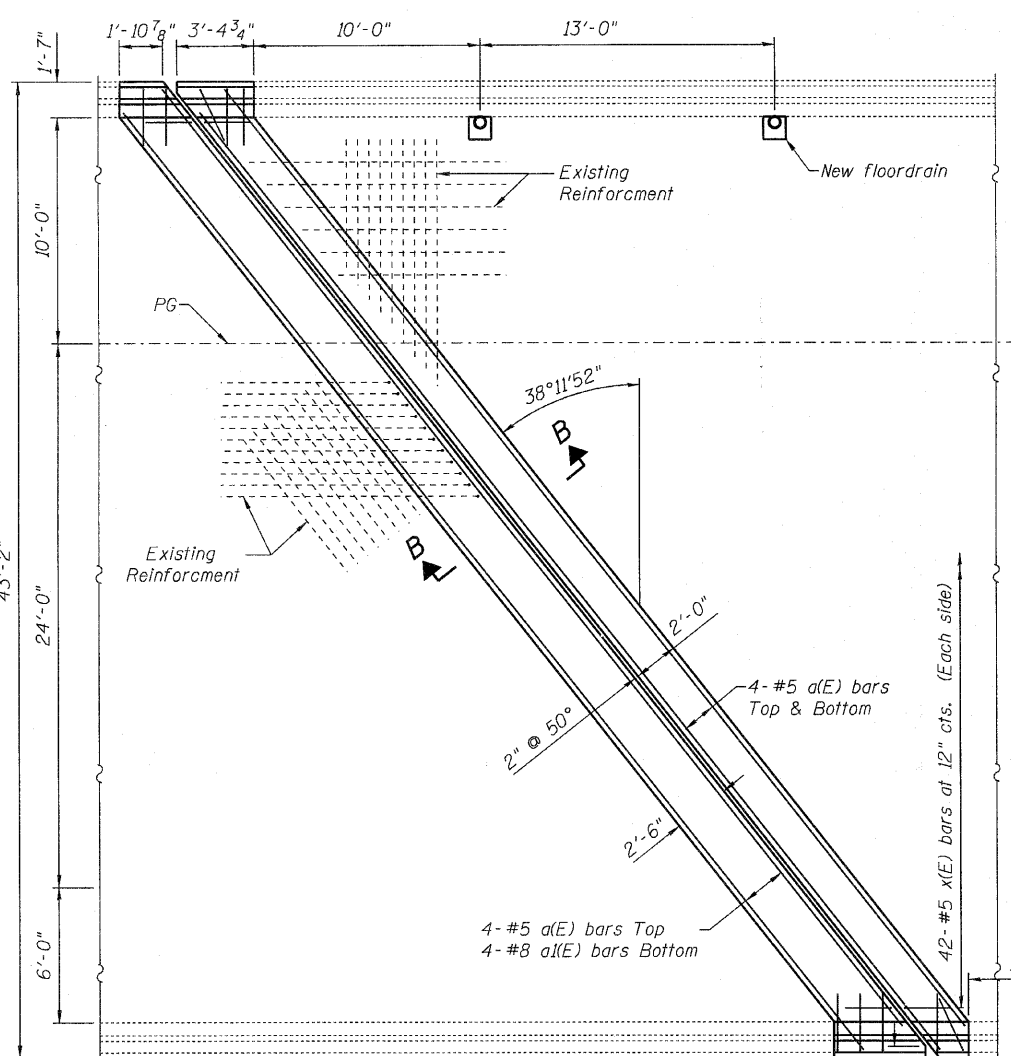


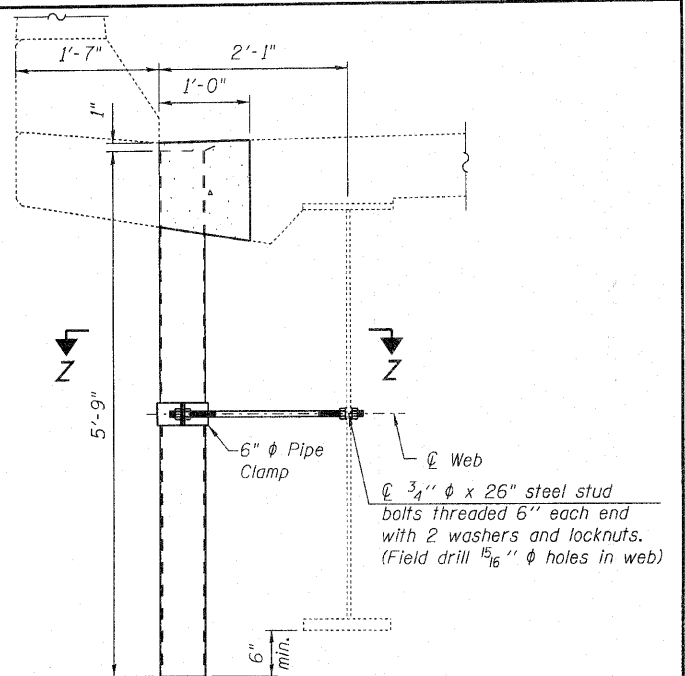
STATE OF ILLINOIS  
DEPARTMENT OF TRANSPORTATION



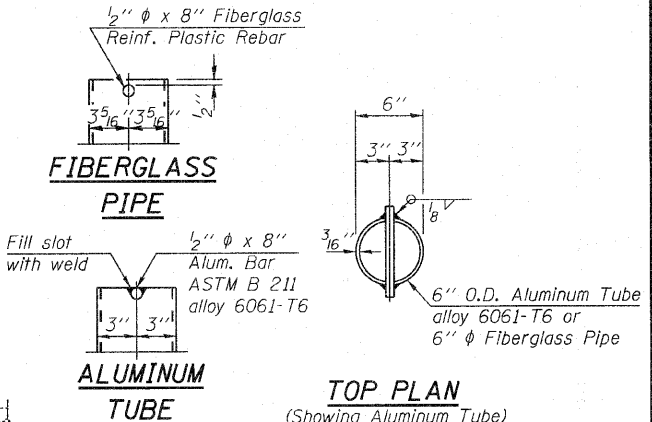
CONCRETE REMOVAL



CONCRETE REPLACEMENT



SECTION THRU NEW DRAIN



TOP PLAN (Showing Aluminum Tube)

BILL OF MATERIAL

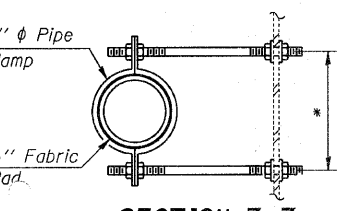
Bar	No.	Size	Length	Shape	
a(E)	12	#5	52'-3"	—	
a(E)	4	#8	48'-0"	—	
d(E)	10	#5	5'-8"	L	
d(E)	10	#5	3'-11"	L	
x(E)	84	#5	2'-7"	C	
Reinforcement Bars, Epoxy Coated				Pound	1490
Concrete Superstructure				Cu. Yds.	13.7
Concrete Removal				Cu. Yds.	13.7

Bars indicated thus 4x2 - #5 etc. indicates 4 line of bars with 2 lengths per line.

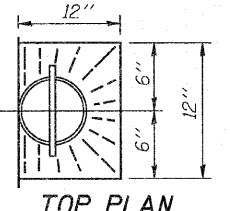
See sheet 4 of 16 for parapet sections and bar details.

RAMP E

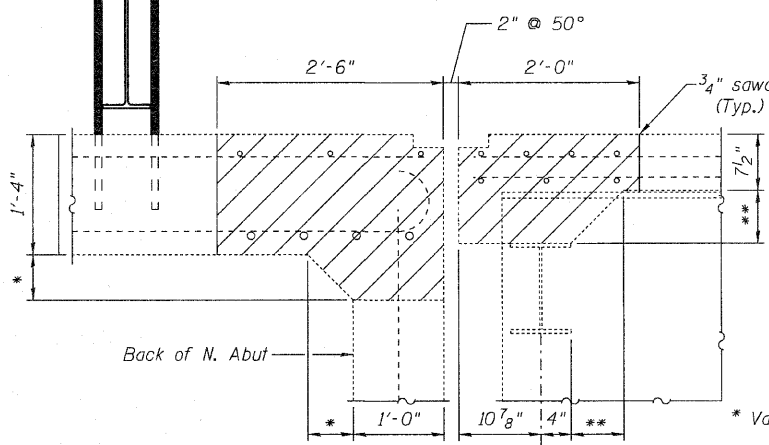
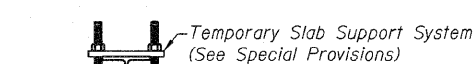
N. ABUTMENT CONCRETE REPLACEMENT  
082-0217 & 0218



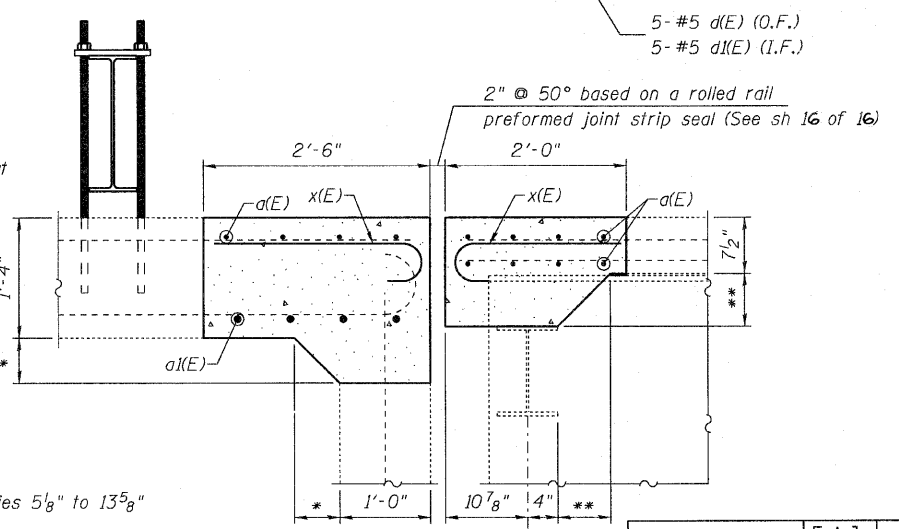
SECTION Z-Z  
\*Dimension as required by Pipe Clamp



TOP PLAN



SECTION A-A



SECTION B-B

DESIGNED	J. Uehle	EXAMINED	<i>A. Calving</i>
CHECKED	A. Hallway	PASSED	<i>Ralph E. Anderson</i>
DRAWN	J. Uehle	ENGINEER OF BRIDGES AND STRUCTURES	
CHECKED	A. Hallway	November 5, 2010	

SHEET NO. 3 16 SHEETS	F.A.] RTE.	SECTION	COUNTY	TOTAL SHEETS	SHEET NO.
	255	82-7HB-1	ST. CLAIR	43	10
			CONTRACT NO.	76C33	
ILLINOIS FED. AID PROJECT					