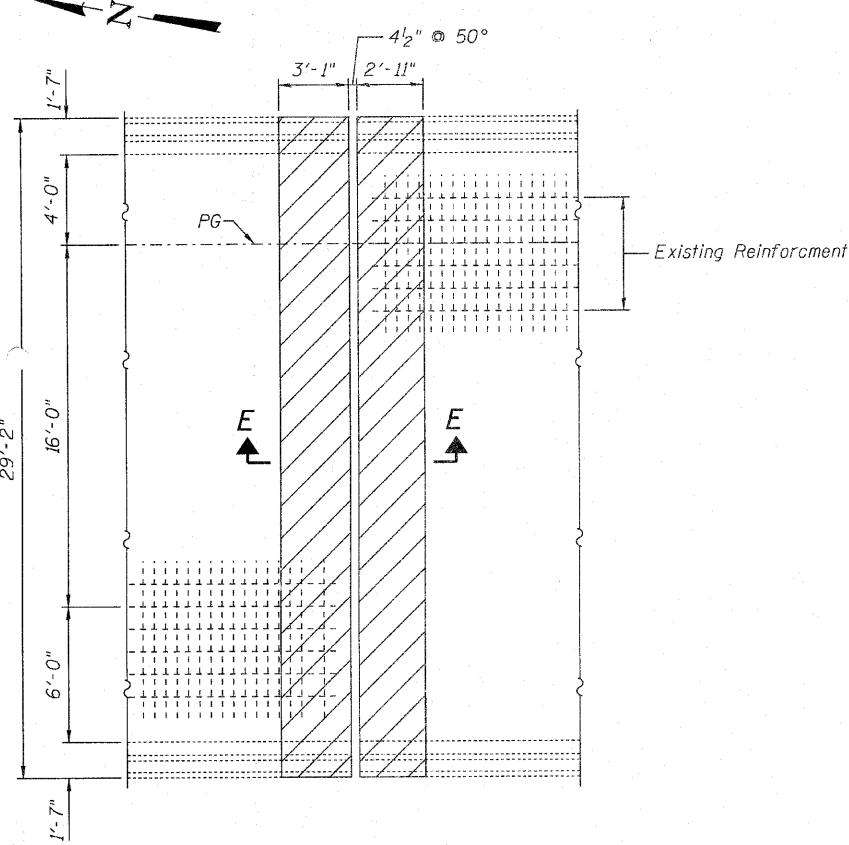
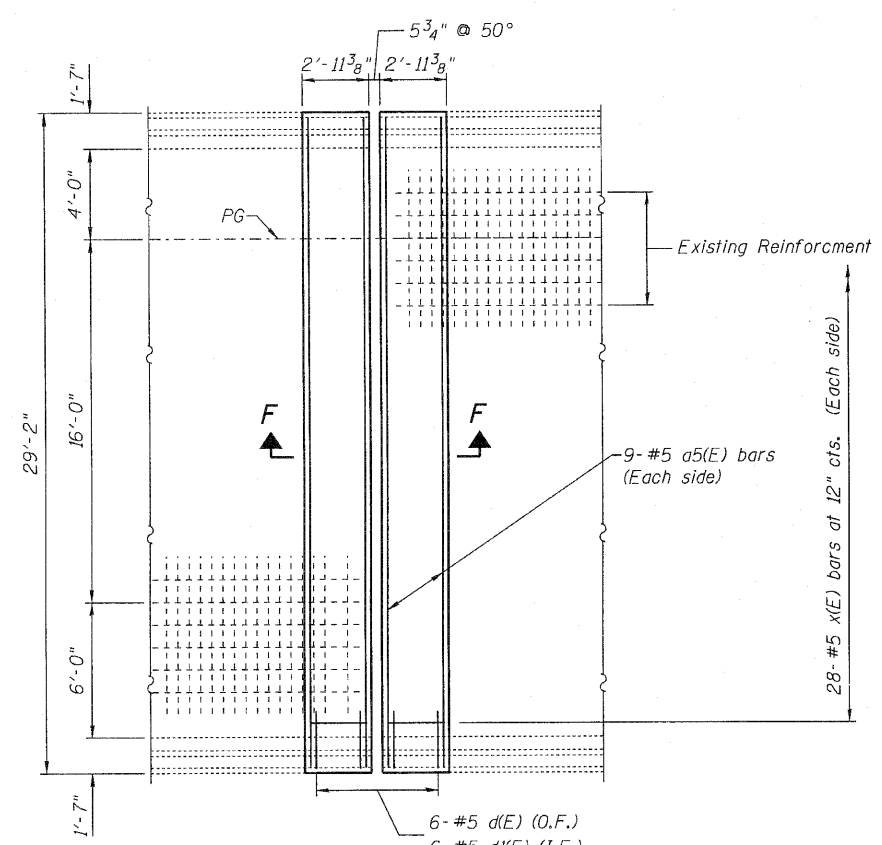


STATE OF ILLINOIS
DEPARTMENT OF TRANSPORTATION



CONCRETE REMOVAL



CONCRETE REPLACEMENT

The ϕ of existing joint is offset 1" south from the ϕ of pier, since the north bearings and north beam end extensions are longer. The reconstructed joint will be centered on the pier.

See sheet 5 of 16 for Section E-E.
See sheet 11 of 16 for Section F-F.

BILL OF MATERIAL

Bar	No.	Size	Length	Shape
a5(E)	18	#5	27'-2"	—
d(E)	12	#5	5'-8"	L
d(I(E)	12	#5	3'-11"	U
x(E)	56	#5	2'-7"	C
Mechanical Splicers		Each	56	
Reinforcement Bars, Epoxy Coated		Pound	780	
Concrete Superstructure		Cu. Yds.	6J	
Concrete Removal		Cu. Yds.	6.7	

Bars indicated thus 4x2 - #5 etc. indicates 4 line of bars with 2 lengths per line.

**RAMP F
PIER 3 CONCRETE REPLACEMENT
082-0217 & 0218**

DESIGNED J. Uehle
CHECKED A. Holloway
DRAWN J. Uehle
CHECKED A. Holloway

November 5, 2010
EXAMINED *[Signature]*
PASSED *[Signature]*
ENGINEER OF STRUCTURAL SERVICES
ENGINEER OF BRIDGES AND STRUCTURES

SHEET NO. 6 16 SHEETS	F.A.J. RTE.	SECTION	COUNTY	TOTAL SHEETS	SHEET NO.
	255	82-7HB-1	ST. CLAIR	43	13
			CONTRACT NO. 76C33		
ILLINOIS FED. AID PROJECT					