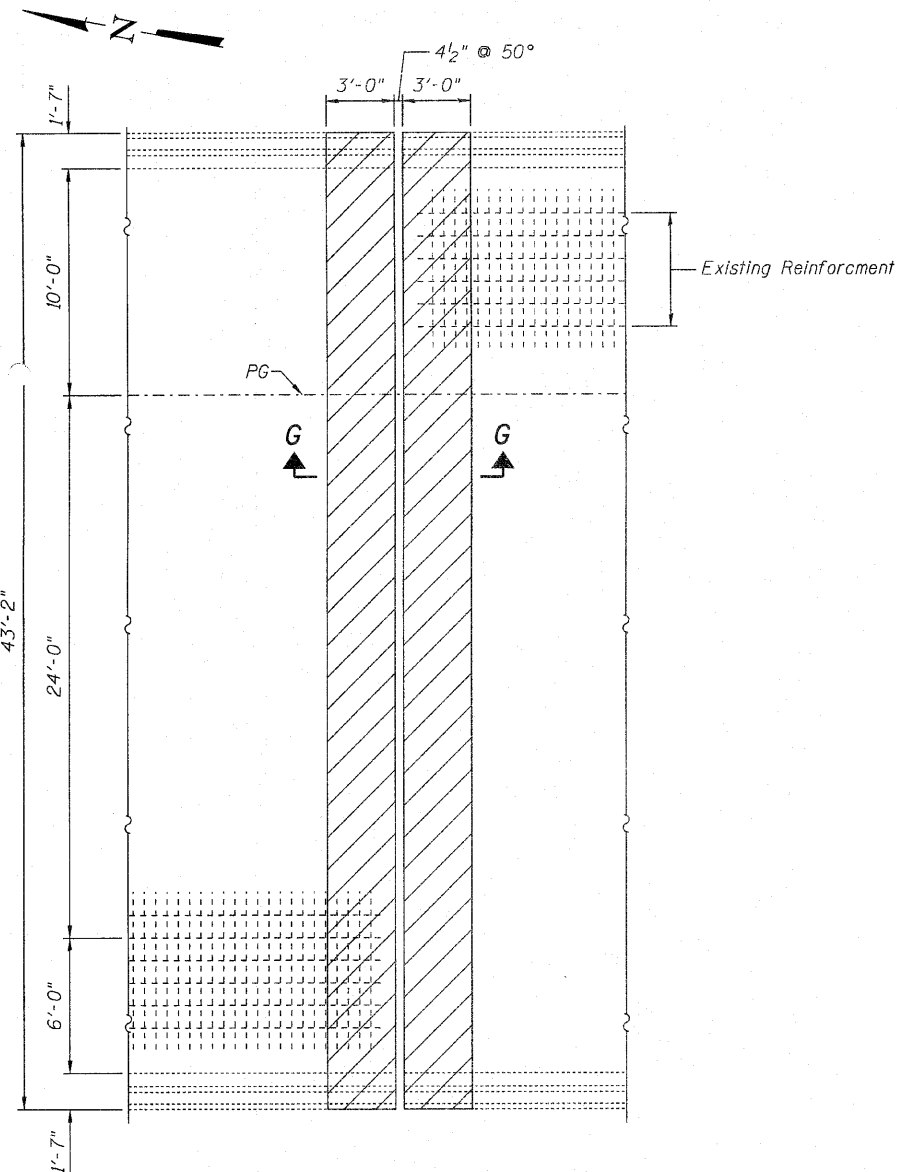
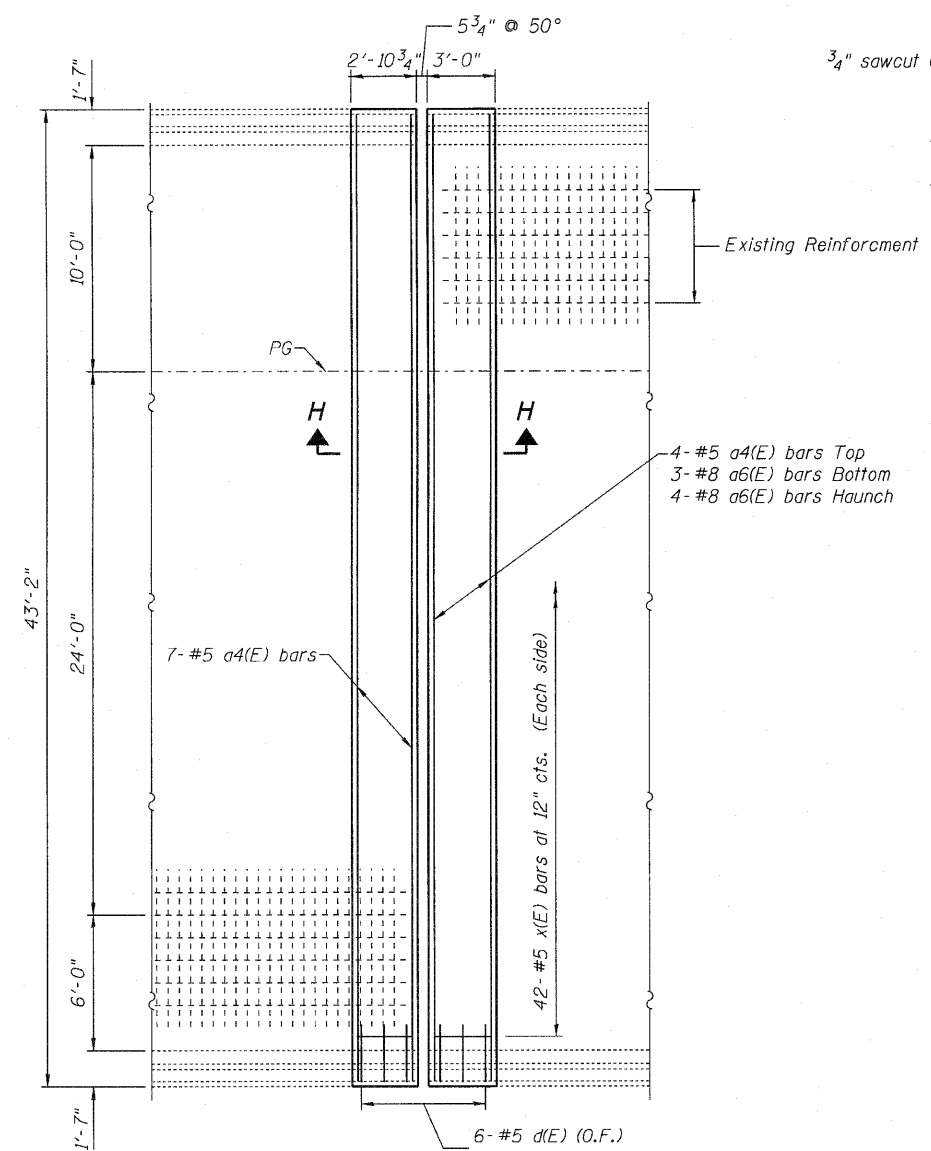


STATE OF ILLINOIS
DEPARTMENT OF TRANSPORTATION

Temporary Slab Support System
(See Special Provisions)

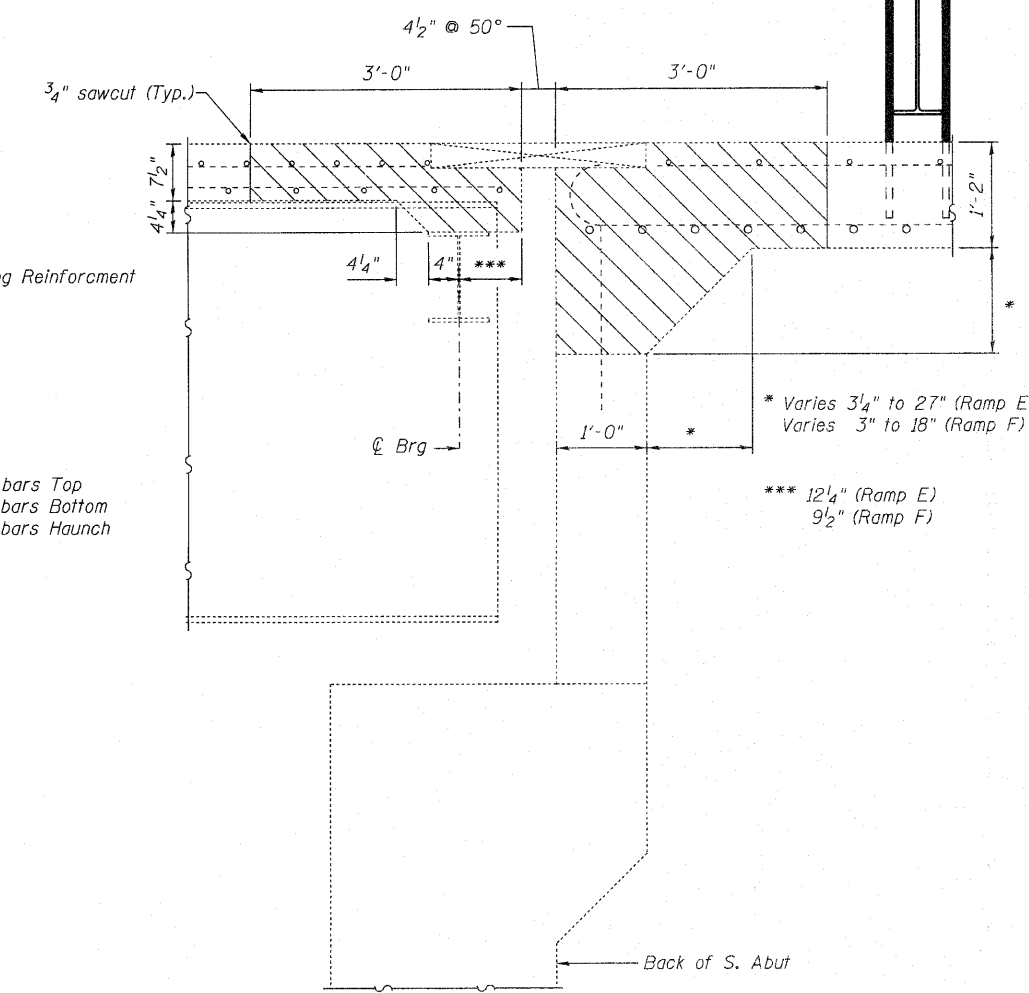


CONCRETE REMOVAL



CONCRETE REPLACEMENT

- 4- #5 a4(E) bars Top
- 3- #8 a6(E) bars Bottom
- 4- #8 a6(E) bars Haunch



SECTION G-G

See sheet 15 of 16 for Section H-H.

BILL OF MATERIAL

Bar	No.	Size	Length	Shape
a4(E)	11	#5	41'-2"	—
a6(E)	7	#8	37'-8"	—
d(E)	12	#5	5'-8"	L
d1(E)	12	#5	3'-11"	U
x(E)	84	#5	2'-7"	C
Mechanical Splicers	Each		84	
Reinforcement Bars, Epoxy Coated	Pound		1520	
Concrete Superstructure	Cu. Yds.		12.5	
Concrete Removal	Cu. Yds.		13.3	

Bars indicated thus 4x2 - #5 etc. indicates 4 line of bars with 2 lengths per line.

**RAMP E
S. ABUTMENT CONCRETE REPLACEMENT
082-0217 & 0218**

DESIGNED	J. Uehle	November 5, 2018
CHECKED	A. Holloway	EXAMINED <i>A. Calberg</i>
DRAWN	J. Uehle	PASSED <i>Ralph E. Anderson</i>
CHECKED	A. Holloway	ENGINEER OF BRIDGES AND STRUCTURES

SHEET NO. 7	F.A.]	SECTION	COUNTY	TOTAL SHEETS	SHEET NO.
	RTE.	82-7HB-1	ST. CLAIR	43	14
16 SHEETS	CONTRACT NO. 76C33			ILLINOIS FED. AID PROJECT	