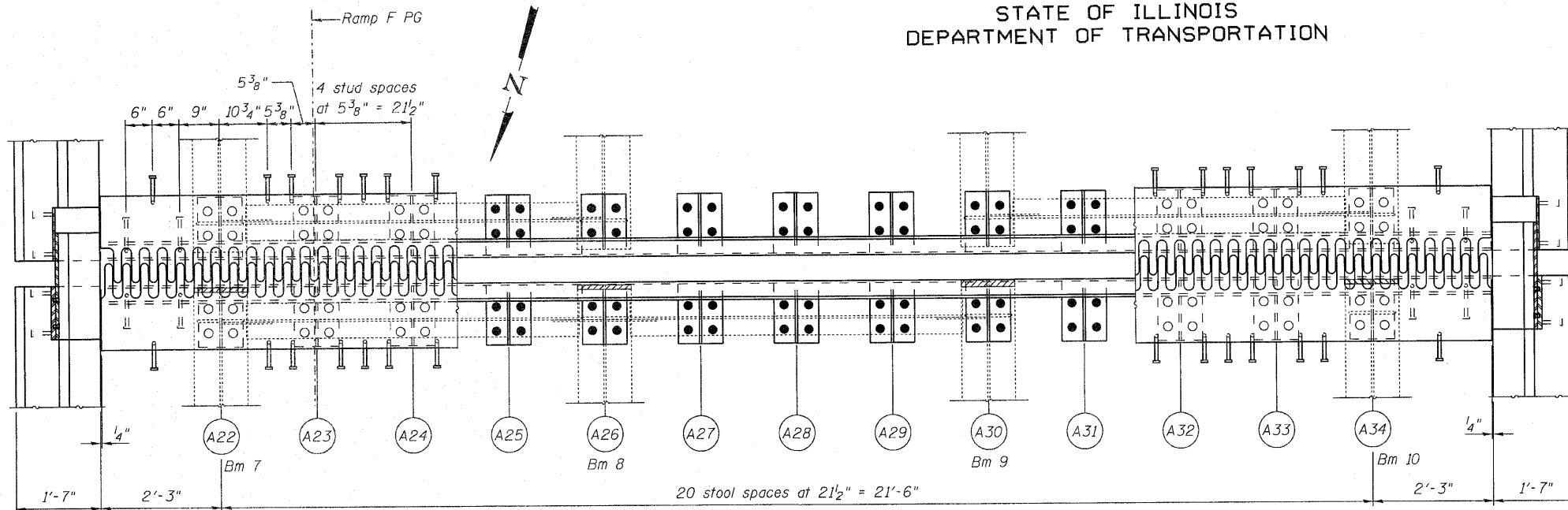
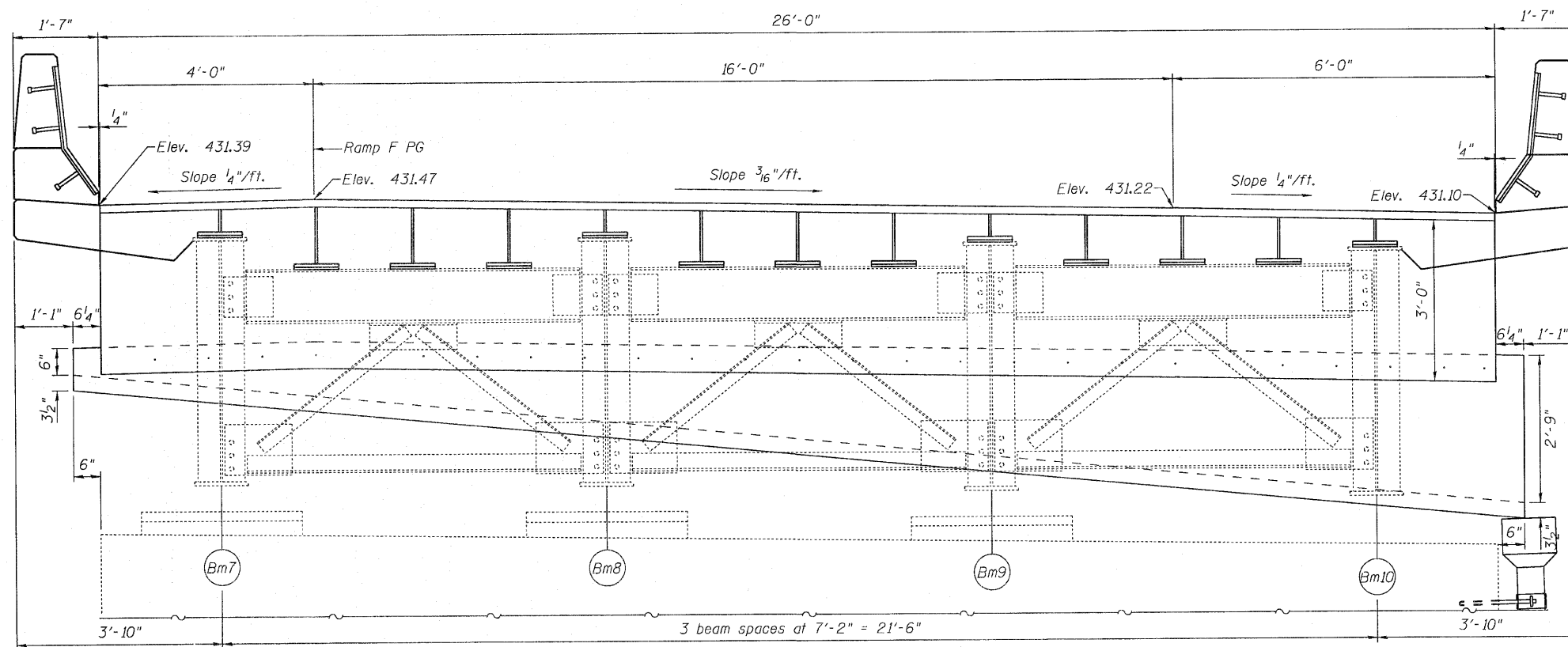


STATE OF ILLINOIS
DEPARTMENT OF TRANSPORTATION



PLAN
(Pier 3 - Ramp F)

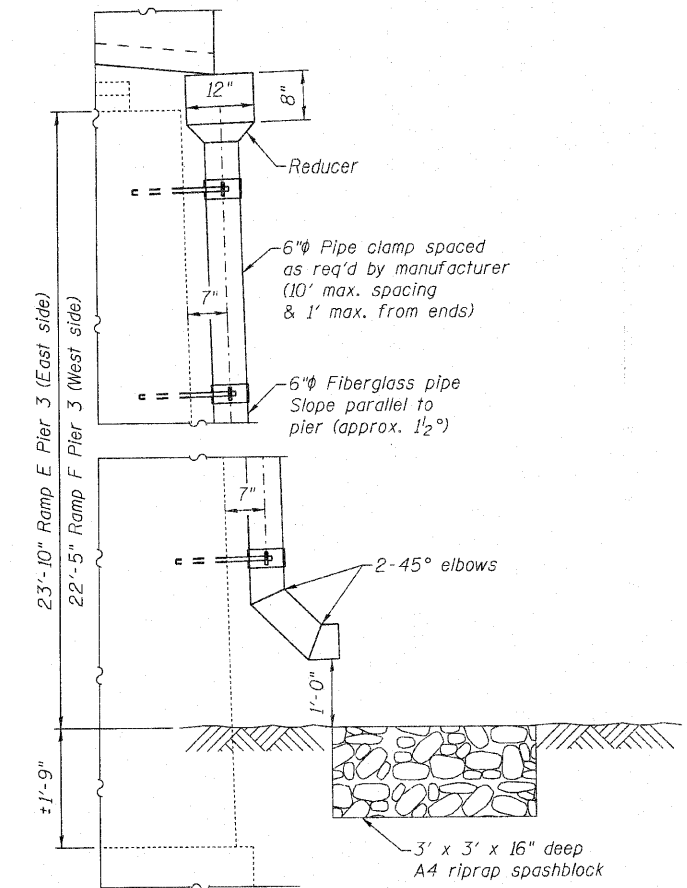


ELEVATION (SECTION I-I)
(Looking South)

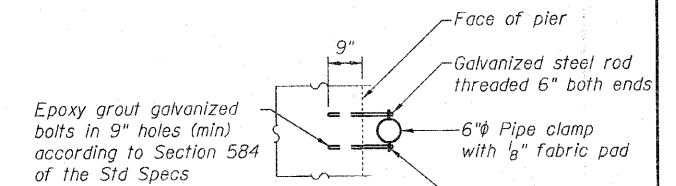
Beam end removal. See sheet 11 of 16 for details.

DESIGNED	A. Hallway
CHECKED	J. Uehle
DRAWN	A. Hallway
CHECKED	J. Uehle

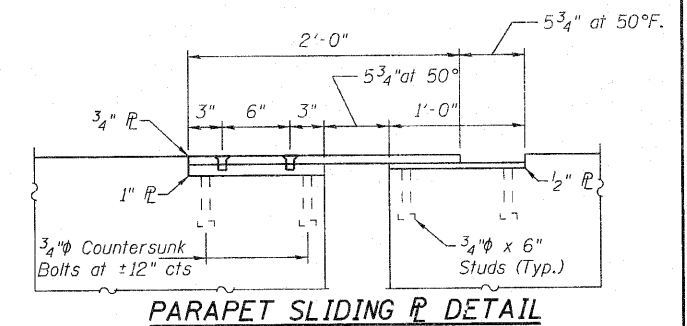
EXAMINED	Jan 15, 2018
PASSED	



DRAIN PIPE DETAILS
(Pier 3 Ramp E - Looking North)
(Pier 3 Ramp F - Looking South)



PIPE CLAMP DETAIL



PARAPET SLIDING PLATE DETAIL

RAMP F
PIER 3 FINGER PLATE
SN 082-017 & 0218

SHEET NO. 10	F.A.I. RTE.	SECTION	COUNTY	TOTAL SHEETS	SHEET NO.
	255	82-THB-I	ST. CLAIR	43	17
16 SHEETS	CONTRACT NO. 76C33				
FED. ROAD DIST. NO.		ILLINOIS FED. AID PROJECT			