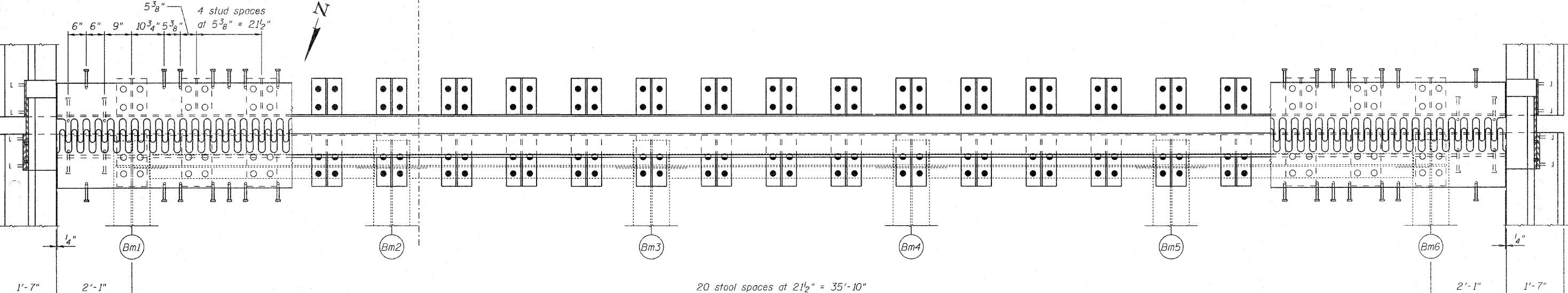
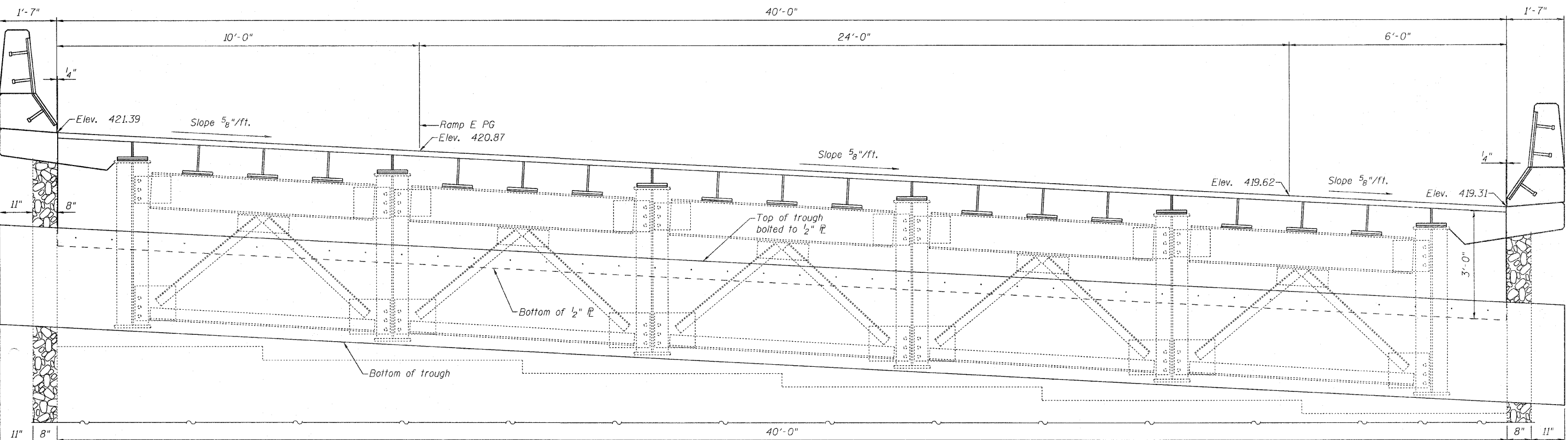


STATE OF ILLINOIS
DEPARTMENT OF TRANSPORTATION



PLAN



ELEVATION (SECTION J-J)
(Diaphragm & Girder Stools Looking South)

RAMP E
SOUTH ABUTMENT FINGER PLATE
SN 082-0217 & 0218

DESIGNED	A. Hallway
CHECKED	J. Uehle
DRAWN	A. Hallway
CHECKED	J. Uehle

Jan 15, 2018
EXAMINED *[Signature]*
PASSED *[Signature]*
ENGINEER OF STRUCTURAL SERVICES
ENGINEER OF BRIDGES AND STRUCTURES

Elevations are
at \bar{C} Brg.

SHEET NO. 12 16 SHEETS	F.A.I. RTE.	SECTION	COUNTY	TOTAL SHEETS	SHEET NO.
	255	82-7HB-1	ST. CLAIR	43	19
FED. ROAD DIST. NO.			ILLINOIS	FED. AID PROJECT	
				CONTRACT NO. 76C33	