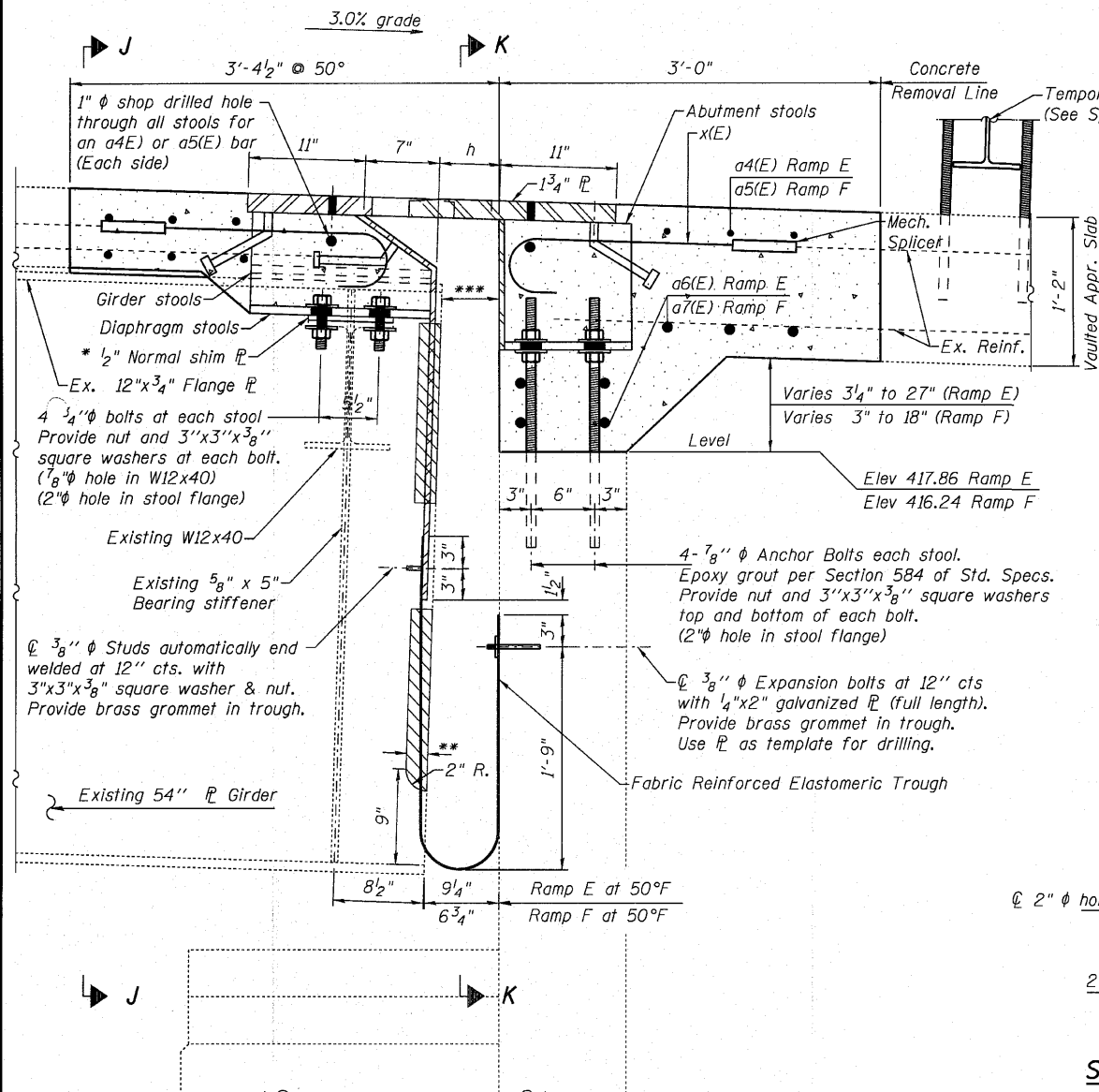


STATE OF ILLINOIS  
DEPARTMENT OF TRANSPORTATION

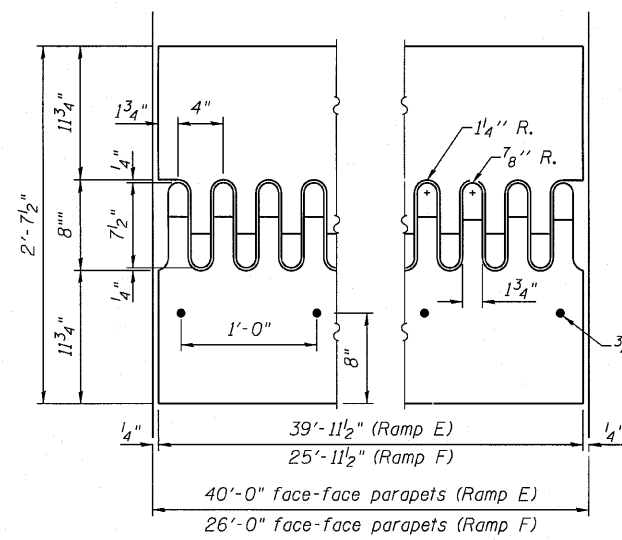


**SECTION H-H**  
(Looking East)

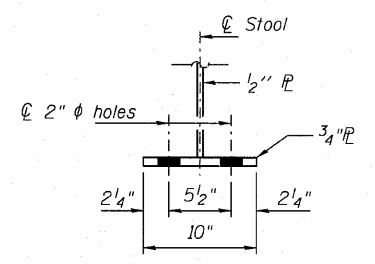
Notes: See sheet 12 & 14 of 16 for stool locations & Section J-J.  
See sheet 13 & 15 of 16 for Section K-K.  
Stool heights are measured at  $\phi$  of bearings.  
All plates shall be AASHTO M270, Gr. 50.  
Existing shear studs that interfere with the finger plate stool shall be removed using the air-arc method and grind smooth all weld material remaining on the top flange. Cost included with Finger Plate Expansion Joint, 5".  
Finger Plate Expansion Joints shall be assembled in the proper position with the ends in place and shall be left assembled for shop inspection.  
Existing reinforcement shall extend 6" min. into the removal area to allow attachment of the mechanical splicers.

DESIGNED	J. Uehle
CHECKED	A. Hallway
DRAWN	J. Uehle
CHECKED	A. Hallway

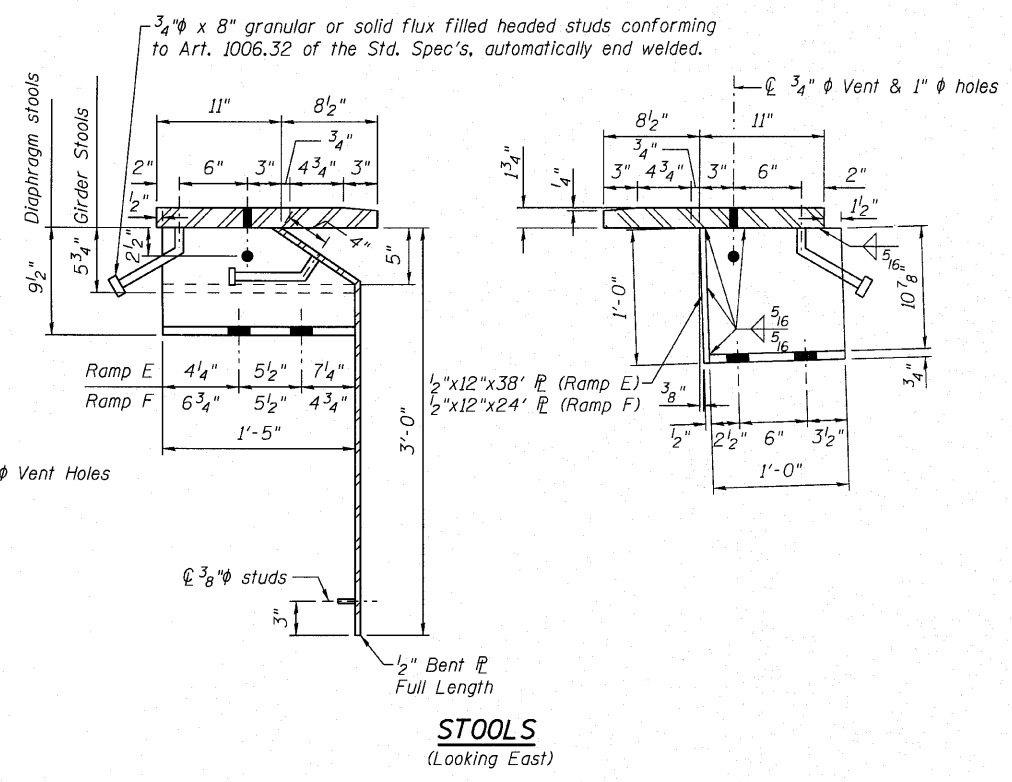
May 8, 2009  
EXAMINED *A. Carl Perry*  
ENGINEER OF STRUCTURAL SERVICES  
PASSED *Ralph E. Anderson*  
ENGINEER OF BRIDGES AND STRUCTURES



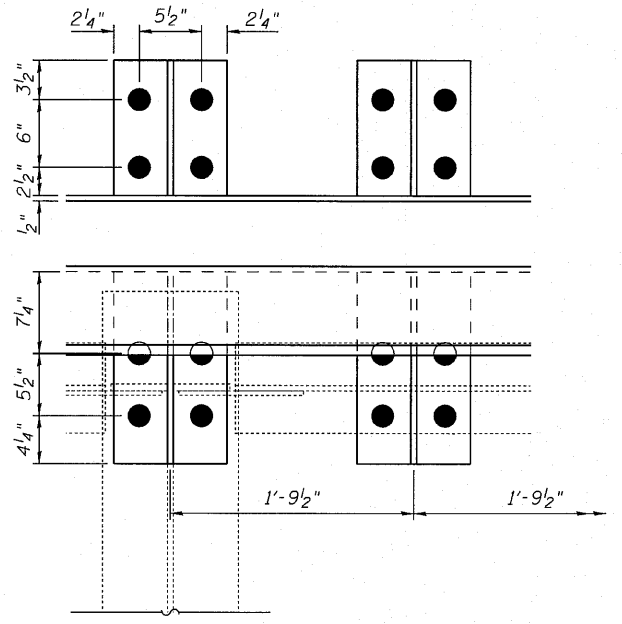
**FLAME CUTTING DIAGRAM**  
(Cut from M270 Gr. 50 PL)



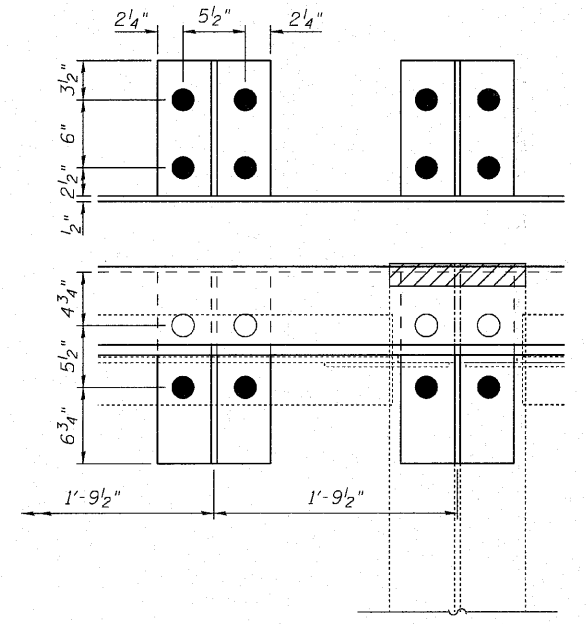
**STOOL SECTION**



**STOOLS**  
(Looking East)



**PARTIAL PLAN OF RAMP E STOOLS**



**PARTIAL PLAN OF RAMP F STOOLS**

S Abut Ramps E & F  
(408' Expansion Length)

Temp.	b	h
-30°F	6"	8 1/4"
50°F	3 1/2"	5 3/4"
130°F	1"	3 1/4"

**FINGER DETAILS**

\* Provide 1/2" normal shim, plus one 1/4" shim, plus one 1/8" shim, and one 1/16" shim for height adjustment. Tapered shims shall be added under the stools as required by the Engineer to make a smooth finger joint.  
\*\* Cut 2" from the top flange & webs of the 4 plate girders at Ramp F only (beams 7-10).  
\*\*\* 8" at 50°F (Ramp E); 5 1/2" at 50°F (Ramp F) calculated from field measurements.

**RAMPES E & F**  
**S ABUTMENT FINGER PLATE DETAILS**  
**SN 082-0217 & 0218**

SHEET NO. 15 16 SHEETS	F.A.I. RTE.	SECTION	COUNTY	TOTAL SHEETS	SHEET NO.
	255	82-7HB-1	ST. CLAIR	43	22
			CONTRACT NO. 76C33		
FED. ROAD DIST. NO. 7 ILLINOIS			FED. AID PROJECT IM-255( )		