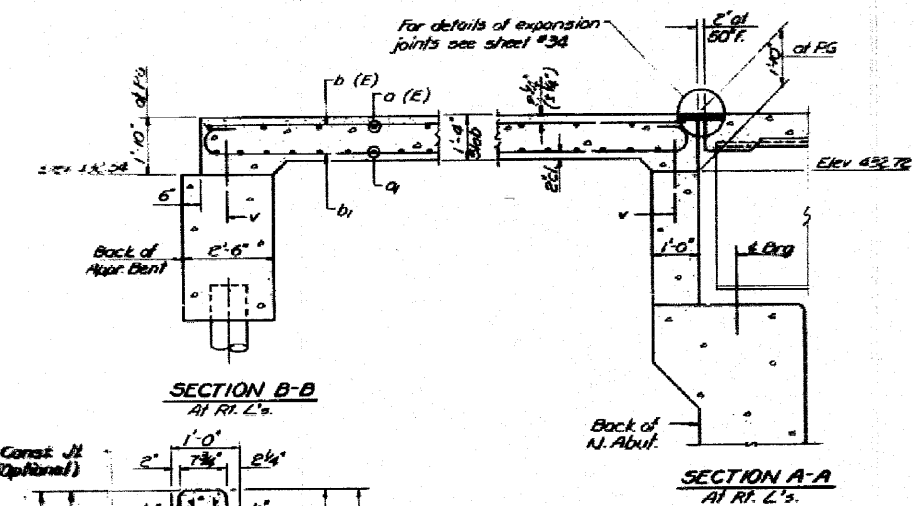
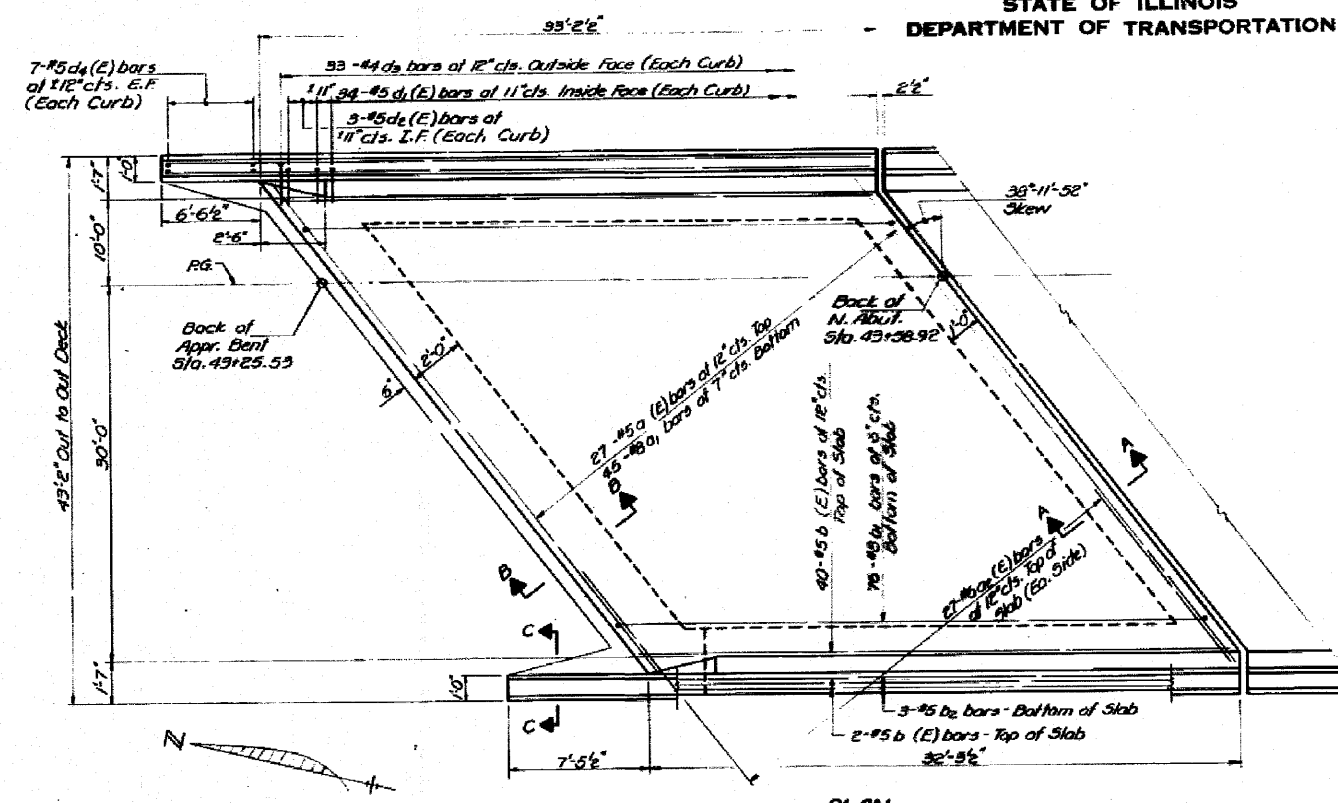


STATE OF ILLINOIS
DEPARTMENT OF TRANSPORTATION

PROJECT NO.	SECTION	COUNTY	TOTAL SHEETS	SHEET NO.
255	82-7HB-I	ST. CLAIR	43	31
SHEET NO. 17 69 sheets				



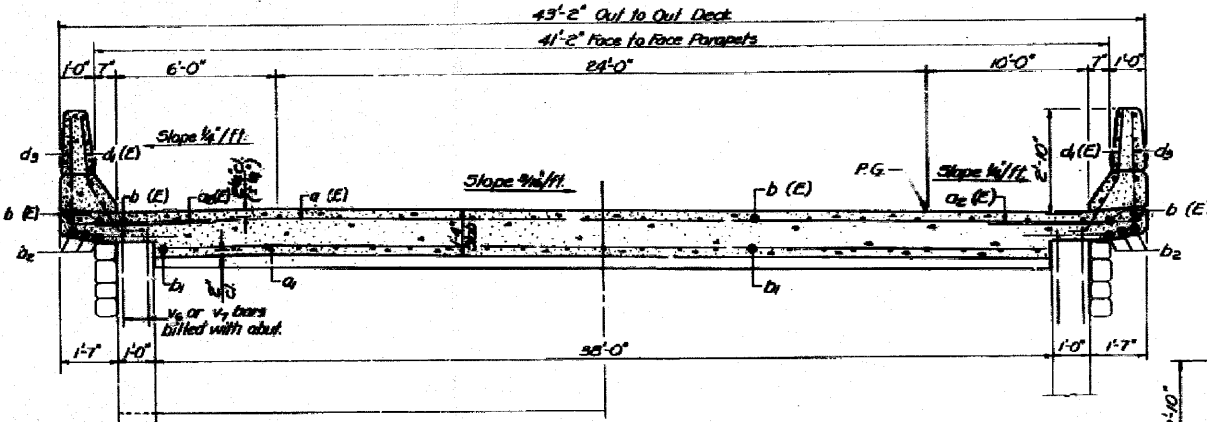
Note: Parapet Class X Concrete and reinforcement are billed with superstructure

BILL OF MATERIAL

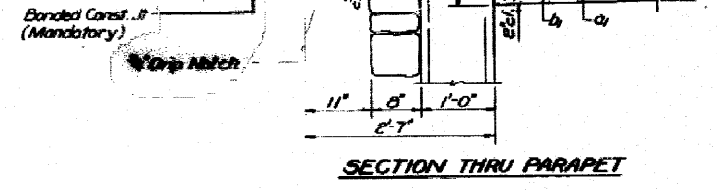
Bar	No.	Size	Length	Shape
a(E)	27	#5	52'-3"	
a1	45	#8	48'-0"	
a2(E)	54	#6	4'-0"	
b(E)	44	#5	32'-6"	
b1	75	#8	36'-4"	
b2	6	#5	32'-6"	
b3	4	#5	6'-0"	
b4	4	#5	7'-2"	
d3(E)	68	#5	5'-11"	L
d3(E)	6	#5	4'-2"	L
d3	60	#4	6'-2"	L
d3(E)	28	#5	5'-11"	L

Reinforcement Bars Lbs. 15,260
Pins for cement Bars (Epoxy Coated) Lbs. 2710
Class X Concrete Cu.Yds. 70.6

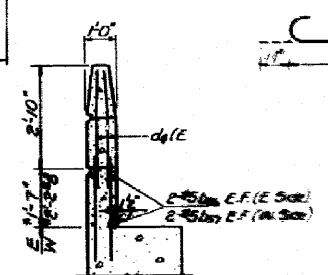
Reinforcement bars designated (E) shall be epoxy coated. See Special Provisions



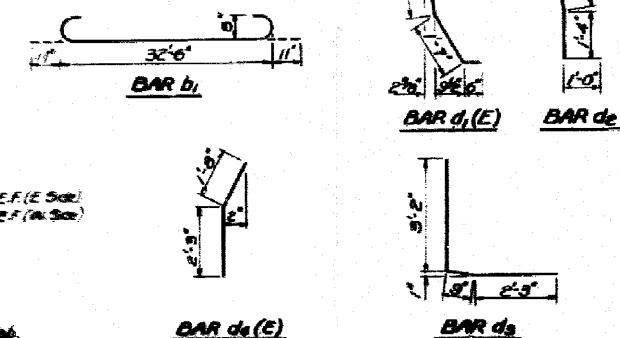
GROSS SECTION
A1 R.L. 2's
Looking North



SECTION THRU PARAPET



SECTION C-C
*This quantity to be billed with Approach Slab.



DESIGNED	Rick Brunette	DATE	May 7 1981
CHECKED	Jim Kowal	FRONT	
DESIGNED	S.G. Paschov	APPROVED	
CHECKED	J.K.		

APPROACH SLAB
NORTH END RAMP 'E'
FAI R.L. 210 SEC. 8C-THD
ST. CLAIR COUNTY
STATION 543+61.11

FOR INFORMATION ONLY