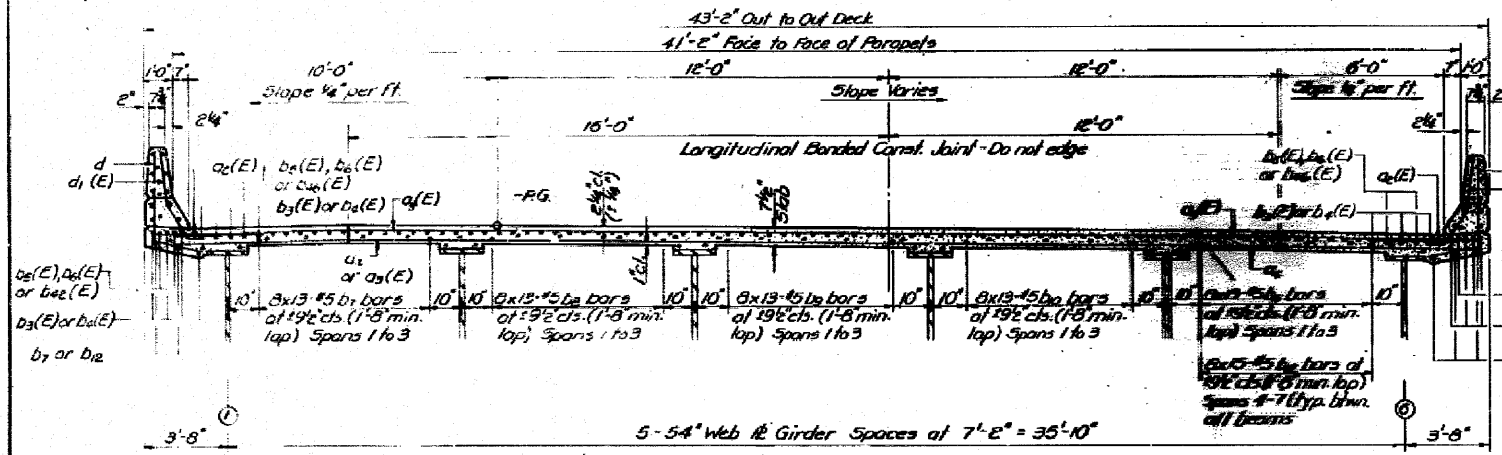


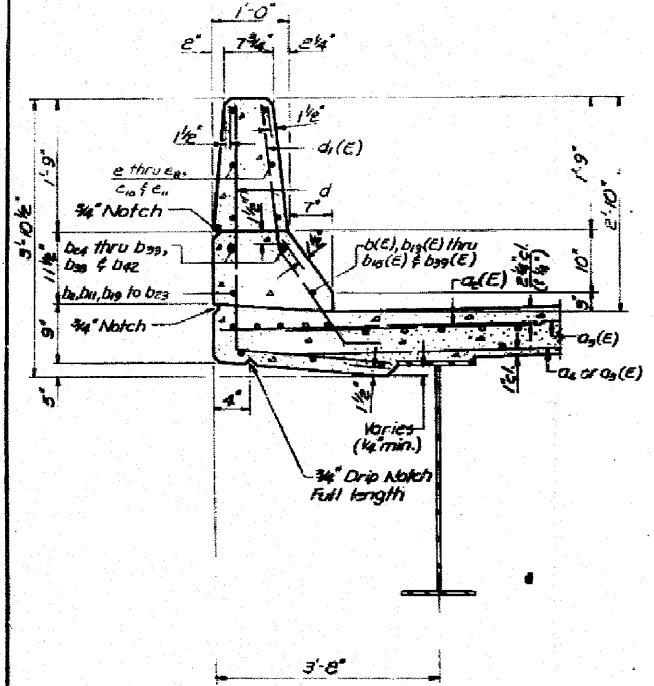
STATE OF ILLINOIS
DEPARTMENT OF TRANSPORTATION

2' Open Joint at 50' of Rt. L.S. (N. Abut.)
4' Open Joint at 50' of Rt. L.S. (S. Abut.)

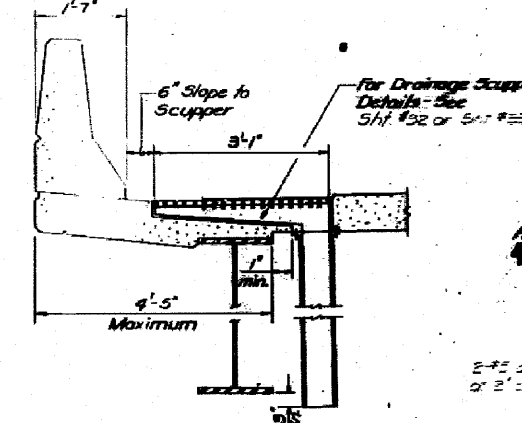
PROJECT NO.	SECTION	COUNTY	TOTAL SHEETS	SHEET NO.
255	B2-7HB	ST. CLAIR	43	35



CROSS SECTION
(Looking South)

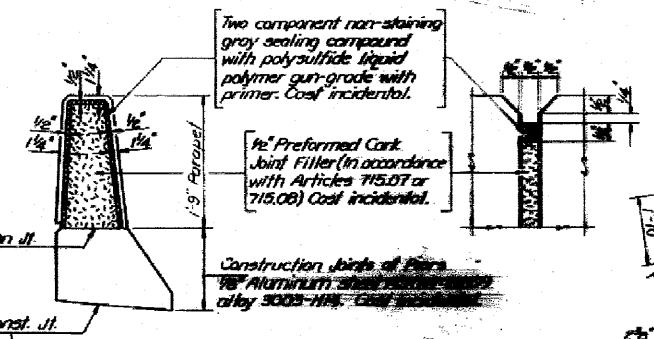


SECTION THRU PARAPET

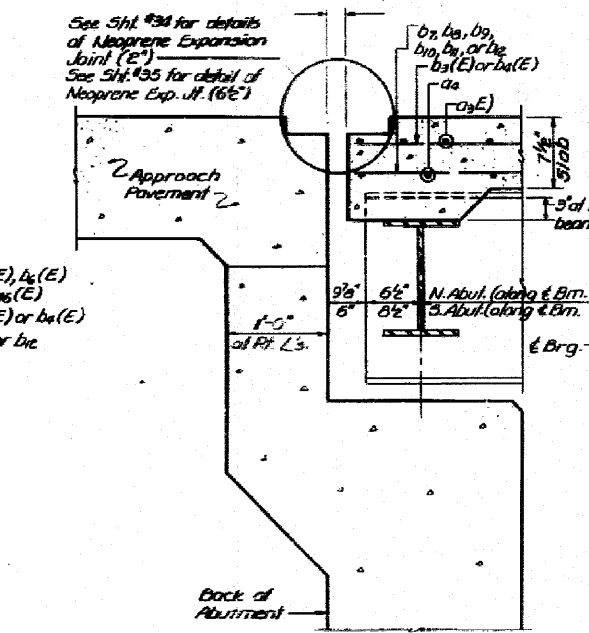


SECTION A-A

Drainage Scupper Details

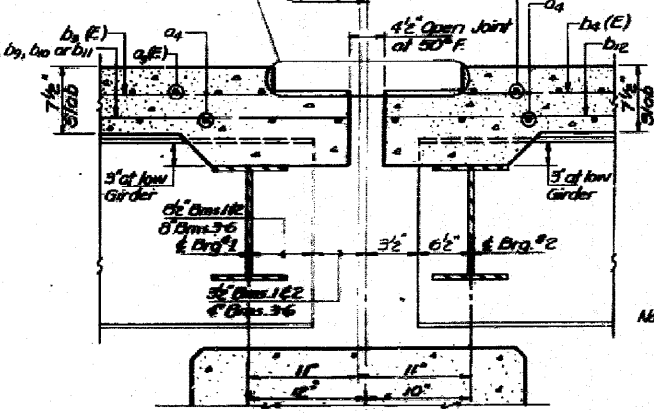


PARAPET JOINT DETAILS



SECTION THRU ABUT'S
Looking East - North Abutment
Looking West - South Abutment

PLAN



SECTION THRU PIER 3
Looking East

BILL OF MATERIAL

Bar	No.	Size	Length	Notes
a1(E)	2	#5	32'-3"	
a2(E)	1787	#5	4'-0"	
a3(E)	1778	#5	41'-2"	
a4	1242	#5	41'-2"	
a5(E)	88	#5	2'-0"	
b1(E)	17	#5	32'-6"	
b2	15	#5	32'-6"	
b3(E)	595	#5	35'-6"	
b4(E)	690	#5	36'-5"	
b5(E)	129	#5	25'-6"	
b6(E)	129	#5	29'-9"	
b7	143	#5	35'-4"	
b8	104	#5	34'-5"	
b9	104	#5	34'-3"	
b10	104	#5	35'-10"	
b11	152	#5	33'-4"	
b12	690	#5	36'-5"	
b13(E)	9	#5	33'-4"	
b14(E)	12	#5	18'-3"	
b15(E)	12	#5	21'-0"	
b16(E)	5	#5	30'-0"	
b17(E)	4	#5	29'-0"	
b18(E)	16	#5	27'-4"	
b19	12	#5	19'-9"	
b20	12	#5	21'-0"	
b21	5	#5	30'-0"	
b22	4	#5	29'-0"	
b23	16	#5	27'-4"	
b24	8	#5	35'-5"	
b25	6	#5	18'-3"	
b26	16	#5	21'-0"	
b27	8	#5	21'-9"	
b28	12	#5	34'-8"	
b29	36	#5	35'-2"	
b30	12	#5	37'-2"	
b31	12	#5	36'-2"	
b32	10	#5	39'-3"	
b33	8	#5	35'-4"	
b34	2	#5	29'-6"	
b35(E)	2	#5	25'-0"	
b36	1	#5	30'-6"	
b37	1	#5	29'-10"	
b38	2	#5	30'-6"	
b39	2	#5	39'-6"	
b40	387	#6	21'-7"	
d	1896	#4	5'-8"	
d1(E)	2067	#5	3'-11"	
e	72	#4	17'-0"	
e1	96	#4	17'-5"	
e2	126	#4	18'-1"	
e3	120	#4	18'-6"	
e4	54	#4	18'-11"	
e5	60	#4	19'-11"	
e6	48	#4	20'-11"	
e7	24	#4	21'-8"	
e8	6	#4	29'-10"	
e9	12	#4	30'-6"	
e10	6	#4	30'-6"	

Note: Reinforcement bars designated (E) shall be epoxy coated. See Special Provisions.

SUPERSTRUCTURE DETAILS
RAMP-E
FAL RT. 270 SEC. 02-7HB
ST. CLAIR COUNTY
STATION 343+61.11

DESIGNED	Rick Brunette
CHECKED	Jim Kozar
DRAWN	S.G. PENCROW
CHECKED	J.K.

FOR INFORMATION ONLY