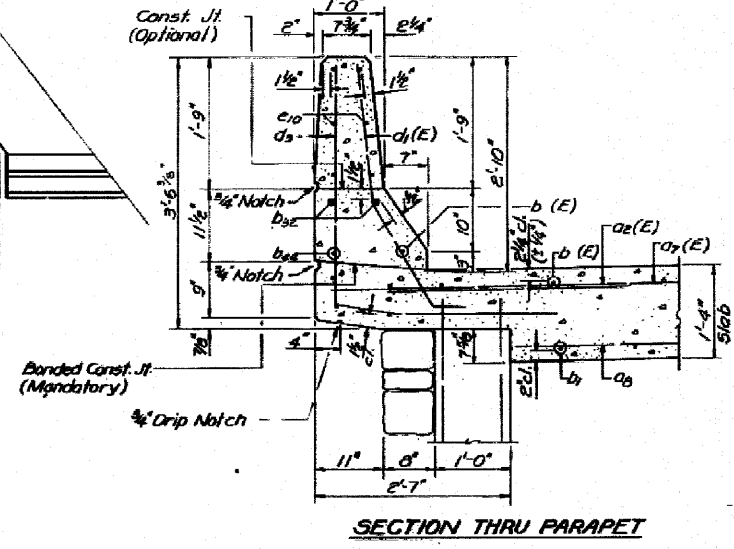
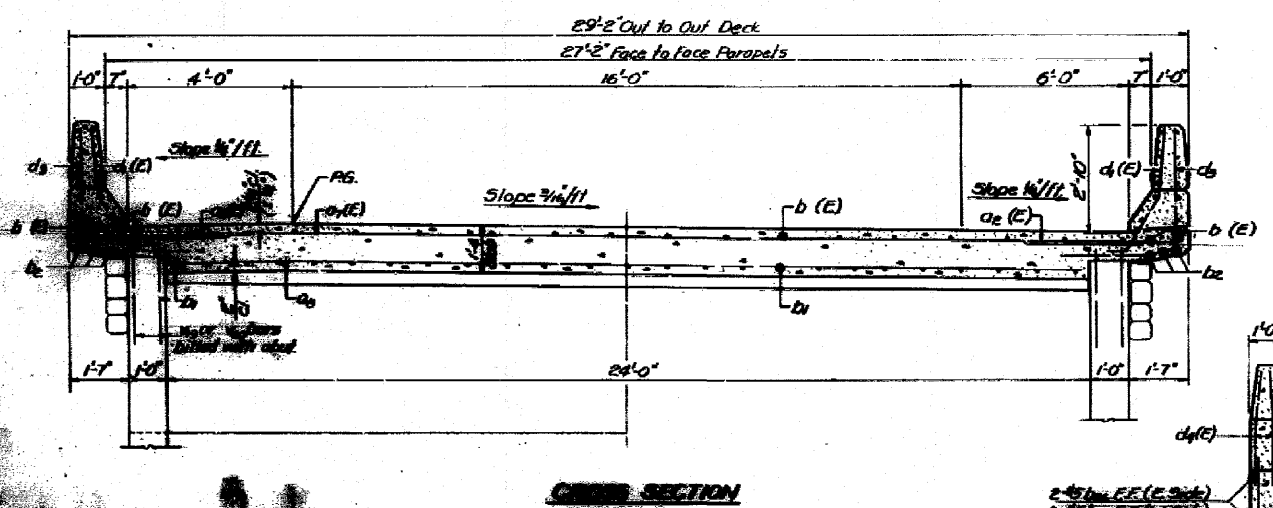
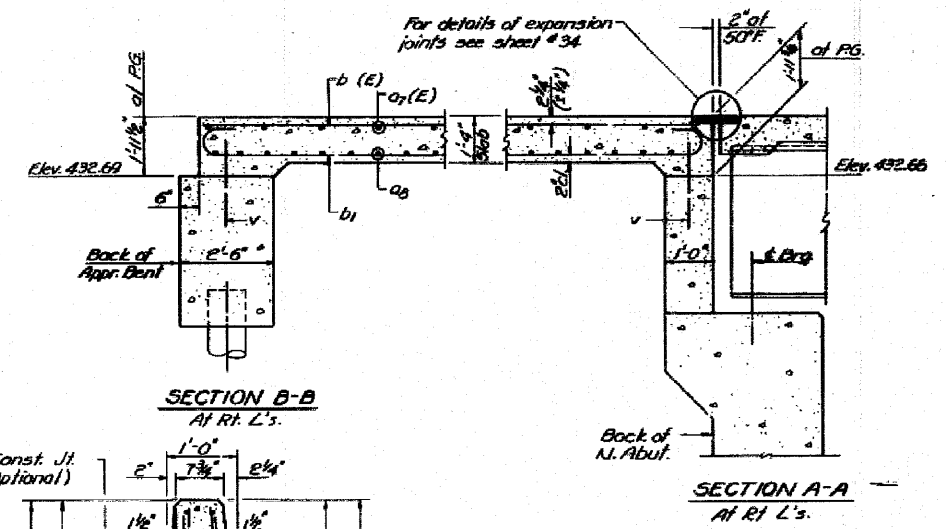
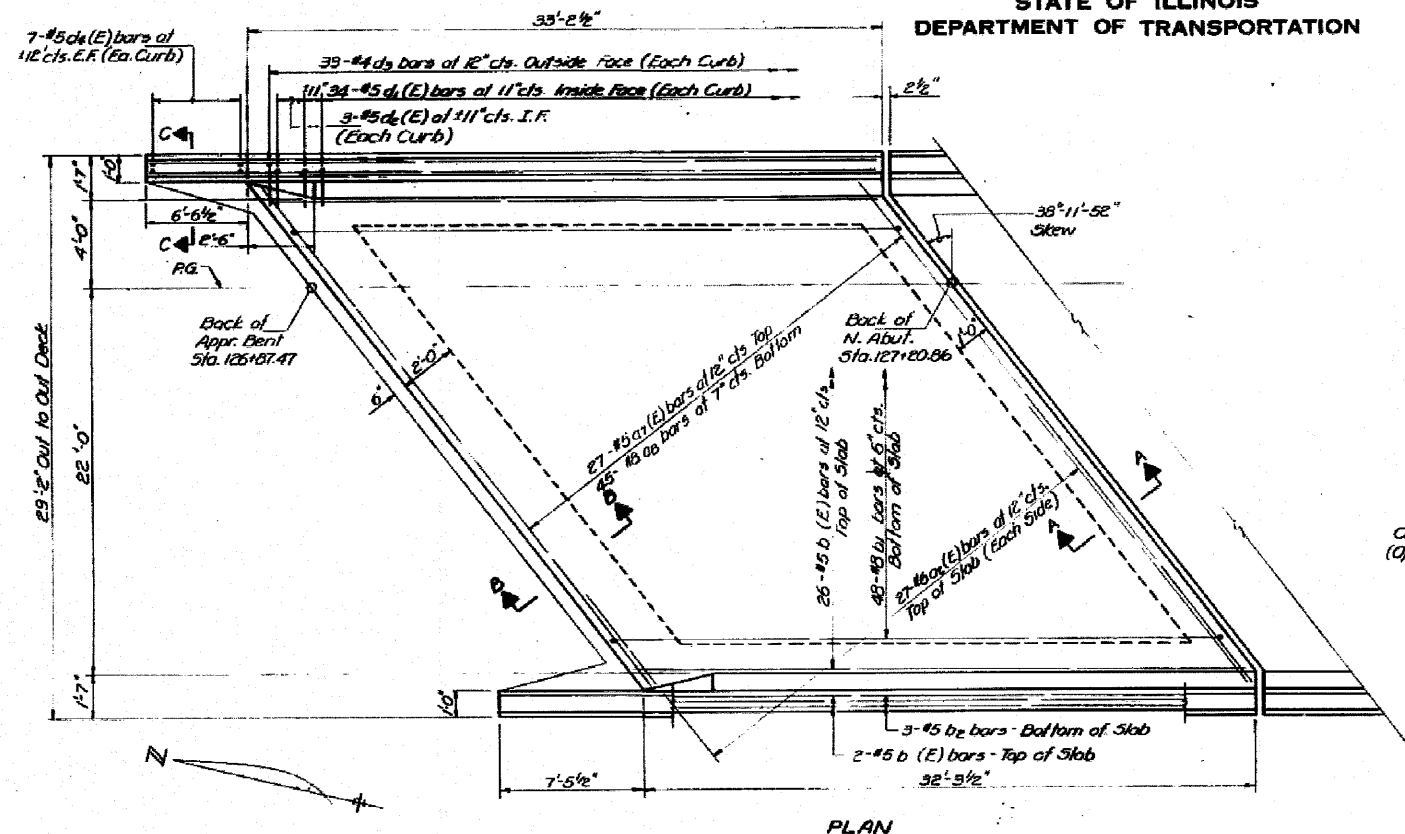


STATE OF ILLINOIS
DEPARTMENT OF TRANSPORTATION

DATE	NO.	BY	CHKD.	APP.	SHEET NO. 24
12-1-55	82-748	St. Clair	83	38	69 SHEETS



BILL OF MATERIAL

Bar	No.	Size	Length	Shape
a1(E)	54	#5	4'-0"	
a2(E)	27	#5	34'-6"	
a3	45	#8	30'-2"	
b(E)	30	#5	32'-6"	
b1	48	#8	34'-6"	
b2	6	#8	32'-6"	
b3	4	#5	6'-0"	
b4	4	#5	7'-2"	
d1(E)	68	#5	34'-11"	
d2(E)	6	#5	4'-2"	
d3	60	#4	6'-2"	
d4(E)	20	#5	3'-11"	

Reinforcement Bars	Lbs.	6520
Reinforcement Bars (Epoxy Coated)	Lbs.	2790
Class X Concrete	Cu/Yds.	452

Note: Reinforcement bars designated (E) shall be epoxy coated. See special Provisions.
Parapet Class X Conc. & reinforcement are bitted with superstructure.

Arch Brunetta
Date: May 7, 1957

FOR INFORMATION ONLY