

STATE OF ILLINOIS  
DEPARTMENT OF TRANSPORTATION

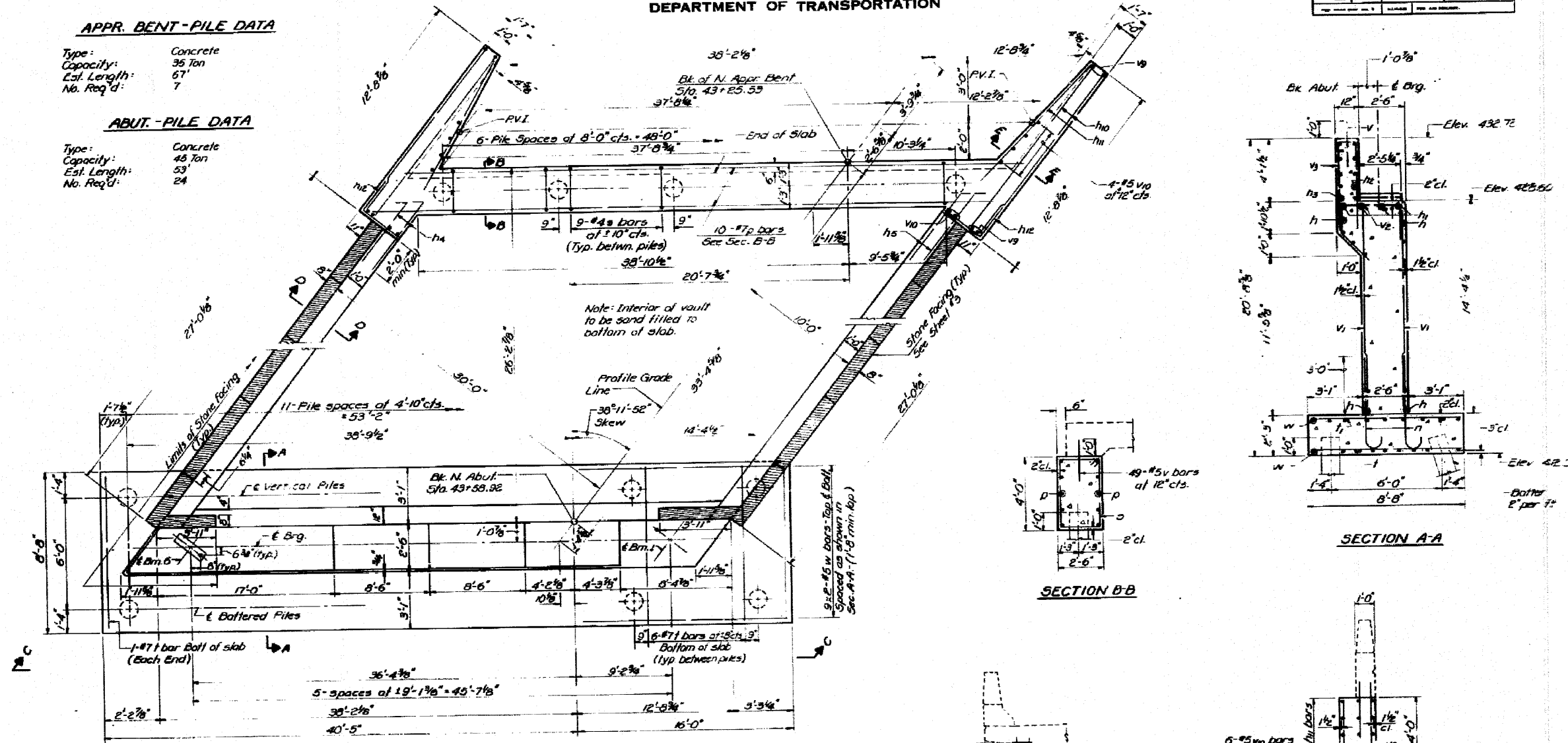
DATE	BY	CHECKED	DESIGNED	SHEET NO.	TOTAL SHEETS
12-25-69	RFB	J.K.	RFB	63	69

APPR. BENT-PILE DATA

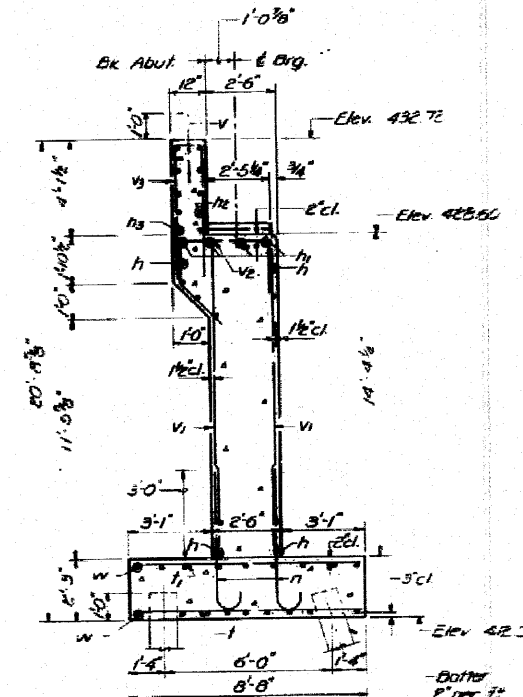
Type: Concrete  
Capacity: 35 Ton  
Est. Length: 67'  
No. Req'd: 7

ABUT.-PILE DATA

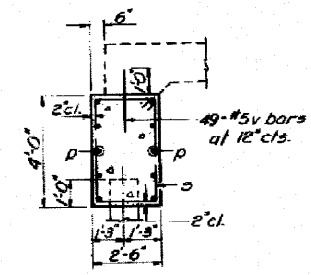
Type: Concrete  
Capacity: 45 Ton  
Est. Length: 53'  
No. Req'd: 24



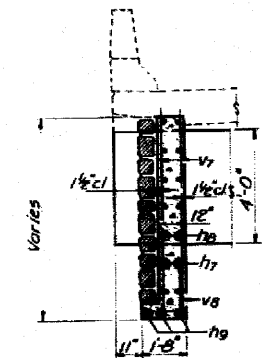
PLAN  
(Looking North)



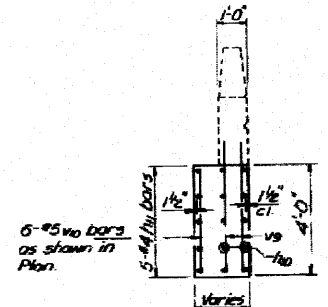
SECTION A-A



SECTION B-B



SECTION D-D



SECTION E-E

Notes:  
For all remaining Sections, Abutment details and Bill of Materials, see sheet #50.  
Bars indicated thus 10x2-#7 etc. indicates 10 lines of bars with 2 lengths per line.  
Steps shall be poured monolithically with stem.  
Space reinforcement in top to miss anchor balls.  
All edges shall have standard 3/8" chamfers except as noted.

DESIGNED	Rick Brunette	EXAMINED	[Signature]
CHECKED	JIM KENNY	APPROVED	[Signature]
DRAWN	J.G. FERGUSON		
CHECKED	J.K.		

RAMP-E  
NORTH ABUTMENT  
F.A.T. RT. 270. SEC. 82-7NB  
ST. CLAIR COUNTY  
STATION 343+6.11

FOR INFORMATION ONLY

FILE NAME =	USER NAME = #USER#	DESIGNED -	REVISED -	STATE OF ILLINOIS DEPARTMENT OF TRANSPORTATION	EXISTING STRUCTURE PLANS	F.A.T. RTE. 255	SECTION 82-7NB-1	COUNTY ST. CLAIR	TOTAL SHEETS 43	SHEET NO. 36
#FILE#	PLOT SCALE = #SCALE#	DRAWN -	REVISED -	SCALE: NA	SHEET NO. 13 OF 20 SHEETS	STA.	TO STA.	FED. ROAD DIST. NO.	ILLINOIS FED. AID PROJECT	CONTRACT NO. 76C33
	PLOT DATE = #DATE#	CHECKED -	REVISED -							