

STATE OF ILLINOIS  
DEPARTMENT OF TRANSPORTATION

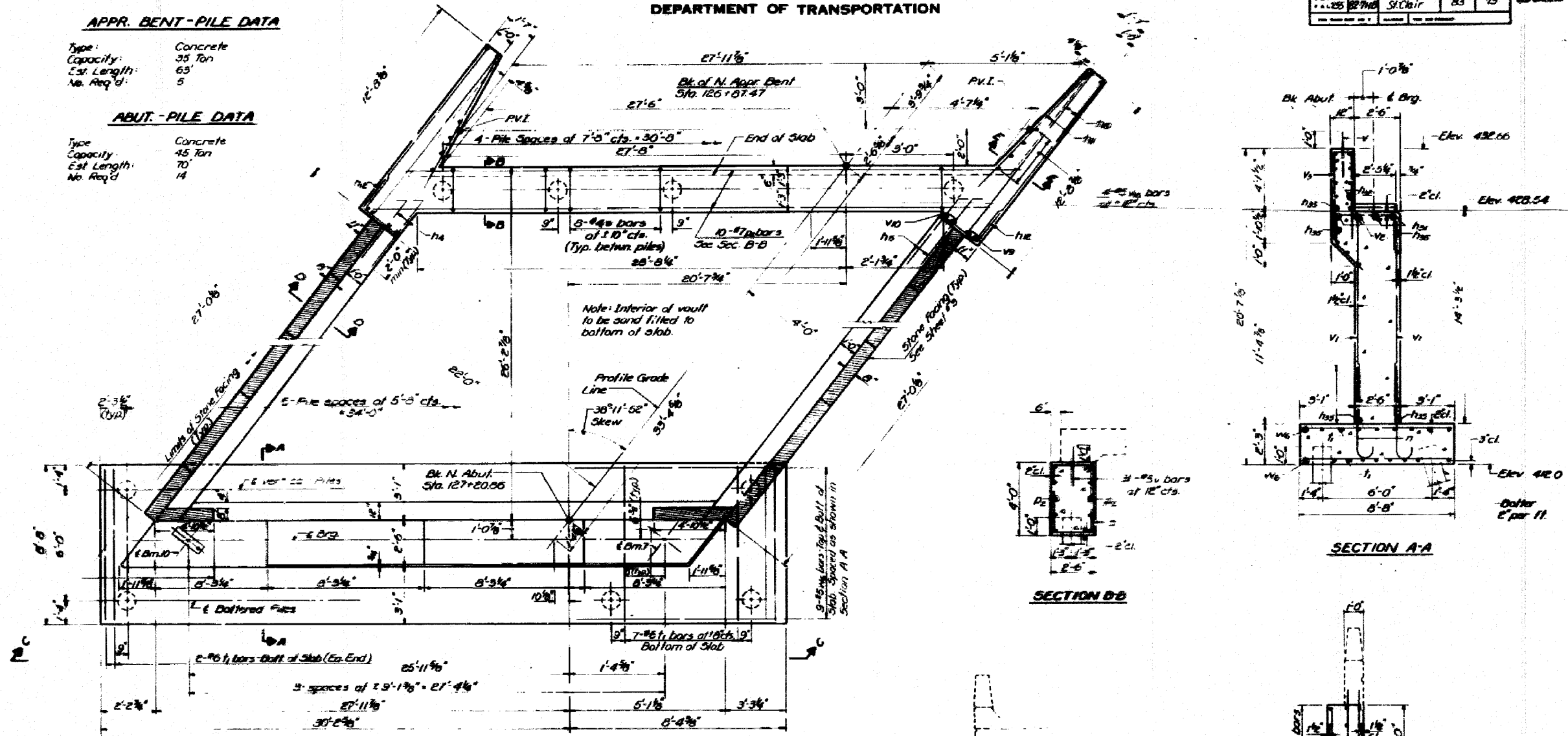
|     |        |           |    |    |    |
|-----|--------|-----------|----|----|----|
| 255 | 82-THB | St. Clair | 83 | 73 | 88 |
|-----|--------|-----------|----|----|----|

APPR. BENT - PILE DATA

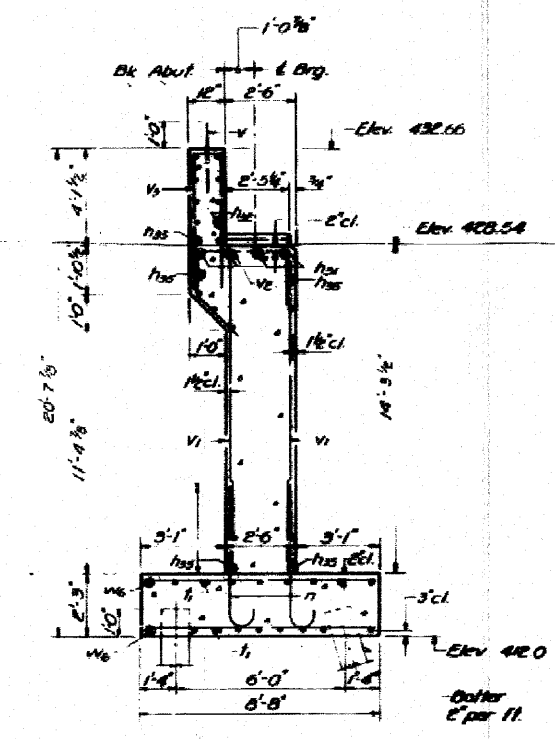
Type: Concrete  
Capacity: 35 Ton  
Est. Length: 63'  
No. Req'd: 5

ABUT. - PILE DATA

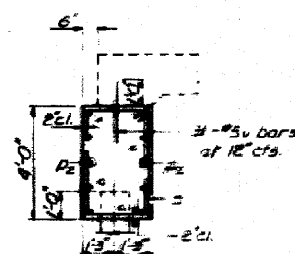
Type: Concrete  
Capacity: 45 Ton  
Est. Length: 70'  
No. Req'd: 14



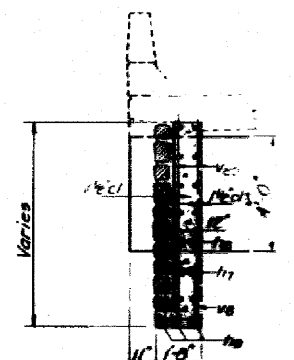
PLAN  
(Looking North)



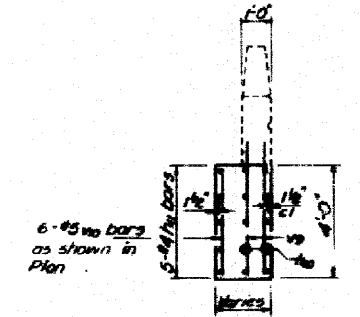
SECTION A-A



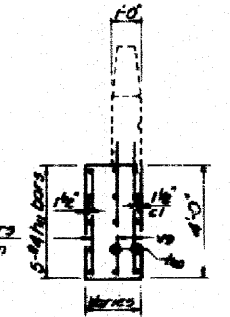
SECTION B-B



SECTION C-C

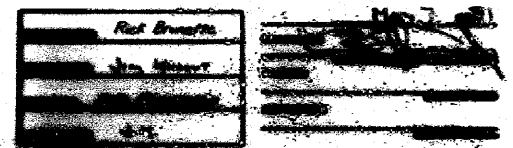


SECTION D-D



SECTION E-E

Notes:  
For all remaining Sections, Abutment details and Bill of Materials, see sheet 82  
Bars indicated with -17 etc. indicates 10 lines of bars with 7 bars per line.  
Spans shall be poured simultaneously with abutments.  
Spans reinforcement to be in accordance with plans.  
All edges shall have standard chamfers except as noted.



FOR INFORMATION ONLY

|             |                      |            |           |   |                          |                           |                           |           |              |           |  |
|-------------|----------------------|------------|-----------|---|--------------------------|---------------------------|---------------------------|-----------|--------------|-----------|--|
| FILE NAME = | USER NAME = \$USER\$ | DESIGNED - | REVISED - | STATE OF ILLINOIS<br>DEPARTMENT OF TRANSPORTATION | EXISTING STRUCTURE PLANS | F.A.I. RTE.               | SECTION                   | COUNTY    | TOTAL SHEETS | SHEET NO. |  |
| \$FILEL\$   |                      | DRAWN -    | REVISED - |   |                          | 255                       | 82-THB-I                  | ST. CLAIR | 43           | 40        |  |
|             |                      | CHECKED -  | REVISED - |   |                          | CONTRACT NO. 76C33        |                           |           |              |           |  |
|             |                      | DATE -     | REVISED - |   |                          | ILLINOIS FED. AID PROJECT |                           |           |              |           |  |
|             |                      |            |           |   |                          | SCALE: NA                 | SHEET NO. 17 OF 20 SHEETS | STA.      | TO STA.      |           |  |