



SCHEDULE OF QUANTITIES

RELOCATE TEMPORARY CONCRETE BARRIER	STATION TO	STATION	FEET
	827+89.15	831+89.15	400
		TOTAL	400

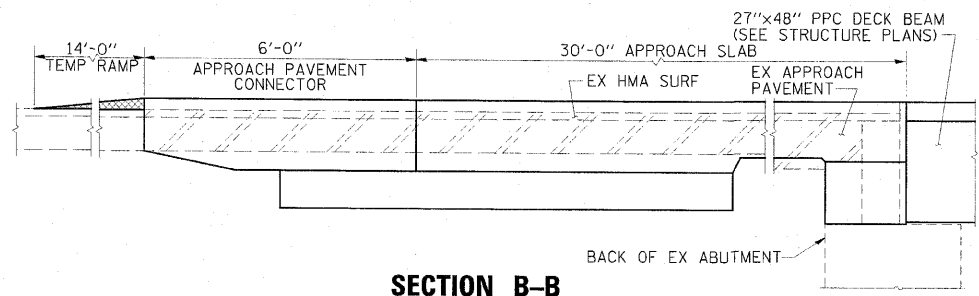
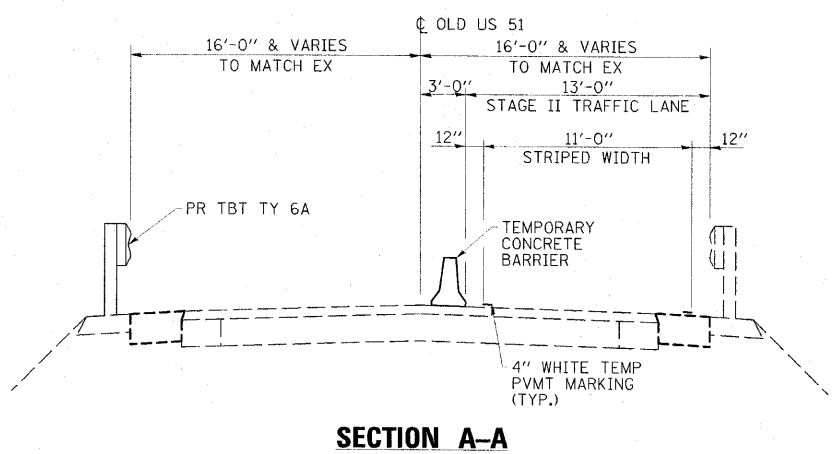
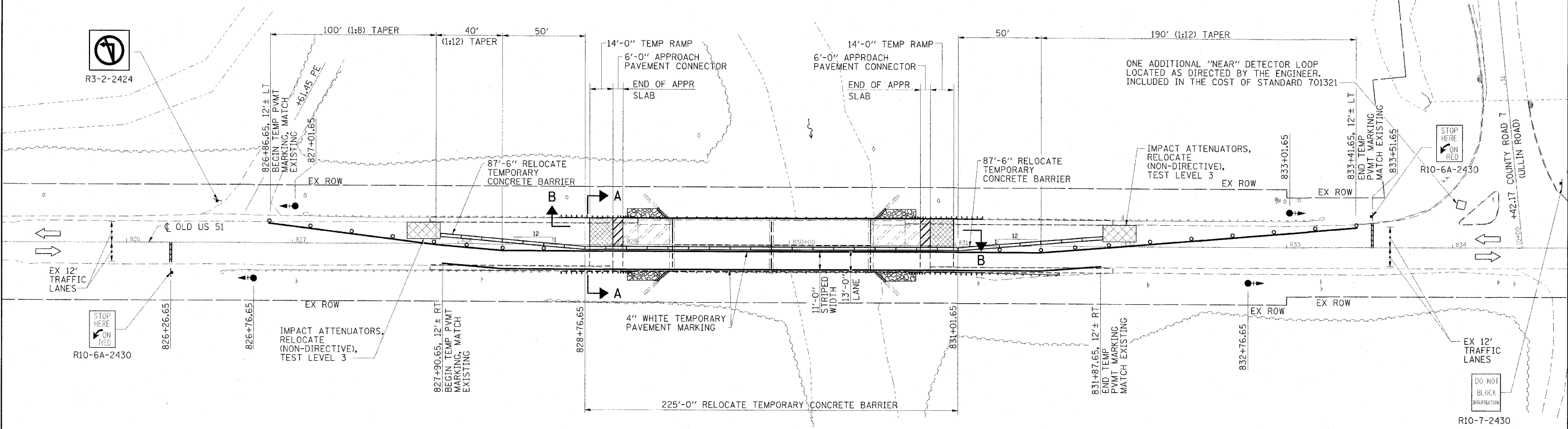
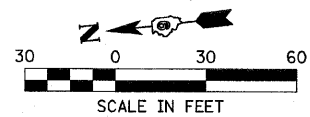
IMPACT ATTENUATORS, RELOCATE (NON-REDIRECTIVE), TEST LEVEL 3 - 2 EACH

LEGEND

- TRAFFIC SIGNAL WITH BACKPLATE, SIGNAL DIRECTION INDICATED
- TEMPORARY RAMP
- PAVEMENT REMOVAL

GENERAL NOTES

1. TRAFFIC CONTROL SHALL BE ERRECTED AS SHOWN AND ACCORDING TO "TRAFFIC CONTROL AND PROTECTION, STANDARD 701321."
2. SEE SPECIAL PROVISIONS FOR ADDITIONAL TRAFFIC CONTROL REQUIREMENTS.
3. COORDINATE LOCATION OF SIGNALS WITH FINAL WORK AS DIRECTED BY THE ENGINEER.
4. SIGNS SHOWN IN ADVANCE OF THE STOP BARS ON STANDARD 701321 ARE ALSO REQUIRED ALONG COUNTY ROAD 7. LOCATIONS OF SIGNS SHALL BE AS DIRECTED BY THE ENGINEER.
5. ADDITIONAL SIGNAGE FOR SIDE ROADS AND ENTRANCES SHALL BE INCLUDED IN THE COST OF STANDARD 701321.
6. THE DIMENSION SHOWN ON THE WIDTH RESTRICTION SIGN (W12-1102(O)-48) SHOWN ON STANDARD 701321 SHALL BE 11'-0" FOR STAGE II CONSTRUCTION.



FILE NAME: D:\12071\cont\p\gng02.dgn	USER NAME: HAS	DESIGNED: DAJ	REVISED: -	STATE OF ILLINOIS DEPARTMENT OF TRANSPORTATION	STAGE II CONSTRUCTION	F.A.S. RTE. 2936	SECTION 14BR-1	COUNTY PULASKI	TOTAL SHEETS 68	SHEET NO. 11	
PLT SCALE: @ 1/8" = 1'	CHECKED: MTD	REVISED: -	SCALE: 1"=30'-0"			SHEET NO. 2 OF 2 SHEETS	STA. 825+50 TO STA. 834+50	CONTRACT NO. 78071			
PLT DATE: 5/17/2010	DATE: 5/10	REVISED: -	FED. ROAD DIST. NO. ILLINOIS FED. AID PROJECT								