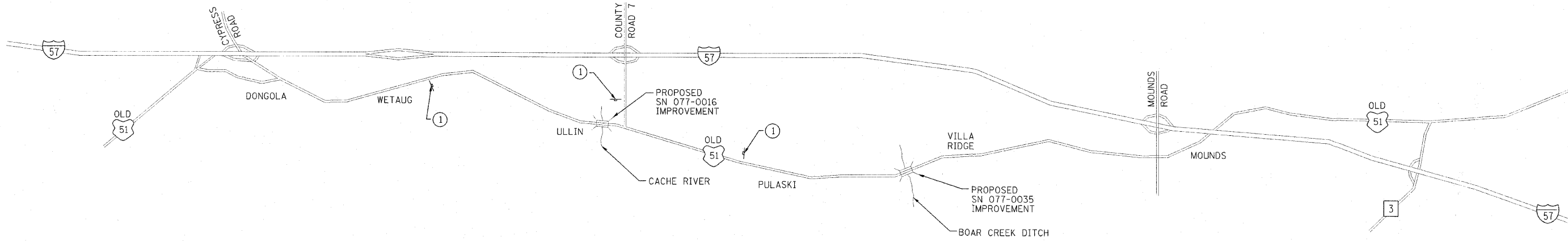


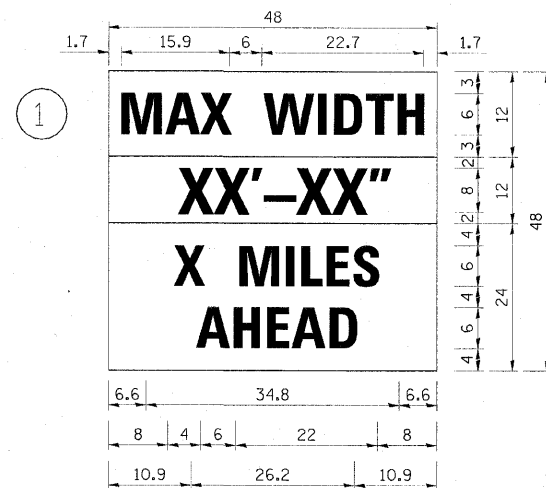
NOTES

1. THE CONTRACTOR SHALL FURNISH THE POSTS AND ERECT THE SIGNS AT THE LOCATIONS DIRECTED BY THE ENGINEER. ALL SIGNS SHALL BE POST MOUNTED.
2. THE WIDTH SHOWN ON SIGN #1 (W12-I103) SHALL BE 11'-0" OR AS DIRECTED BY THE ENGINEER. THE 'X' MILES AHEAD WILL BE DETERMINED BY THE ENGINEER.
3. ALL WORK SHOWN ON THE ROAD CLOSURE PLAN ON THIS SHEET, INCLUDING SIGNS, POSTS, HARDWARE, AND LABOR SHALL BE INCLUDED IN THE CONTRACT LUMP SUM PRICE FOR "TRAFFIC CONTROL FOR ROAD CLOSURE" AND NO OTHER COMPENSATION WILL BE ALLOWED. THE WORK REQUIRED FOR SIGN #1 SHOWN ON THE DETOUR PLAN ON THIS SHEET SHALL BE INCLUDED IN THE CONTRACT UNIT PRICE, EACH, FOR "TRAFFIC CONTROL AND PROTECTION, STANDARD 701321".



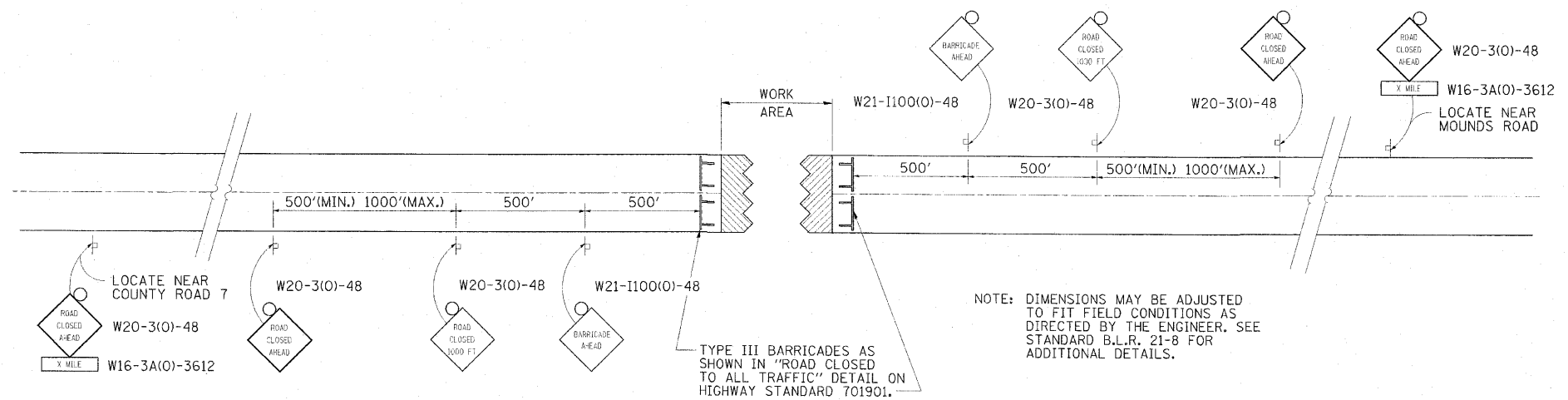
**SN 077-0016
DETOUR PLAN**

SIGN LEGEND



W12-I103

W12-I103 (Width is 8D);
No border, Black on White;
"MAX WIDTH" D;
No border, Black on Orange;
"XX'-XX'" D;
No border, Black on White;
"X MILES" D; "AHEAD" D



**SN 077-0035
ROAD CLOSURE PLAN**

FILE NAME = D:\76671\ent\sign51.dgn	USER NAME = HAS	DESIGNED - DAJ	REVISED -	STATE OF ILLINOIS DEPARTMENT OF TRANSPORTATION	DETOUR SIGNING PLAN	F.A.S. RTE. 2936	SECTION 14BR-1 & 16BR-1	COUNTY PULASKI	TOTAL SHEETS 68	SHEET NO. 12
PLOT SCALE = 1/8" = 1'-0"	CHECKED - MTD	REVISOR -	REVISOR -			CONTRACT NO. 78071				
PLOT DATE = 5/17/2010 10:10:13 AM	DATE - 5/10	REVISOR -	REVISOR -			FED. ROAD DIST. NO. ILLINOIS FED. AID PROJECT				
						SCALE: SHEET NO. 1 OF 1 SHEETS STA. TO STA.				